



Cosmo

SPORT



PACK 08

DEAGOSTINI
MODELSPACE™
www.model-space.com



Cosmo **SPORT**

STAGE

60	THE BATTERY HOLDER CASE – 2	142
61	THE REAR LIGHTS – 1	146
62	NUMBER PLATE LIGHT	148
63	THE REAR LIGHTS – 2	150
64	THE SPEAKER	152
65	THE GEAR LEVER	154
66	THE PLATFORM WIRING	156
67	THE PEDALS	158
68	THE ACCELERATOR PEDAL	160



P.

142

146

148

150

152

154

156

158

160



DEAGOSTINI
MODELSPACE™
www.model-space.com

Designed and produced by Milanoedit srl – www.milanoedit.com

Published by De Agostini Publishing S.p.A., 28100 Novara,
Via G. da Verrazzano 15

All rights reserved © 2020

NOT SUITABLE FOR CHILDREN UNDER THE AGE OF 14.

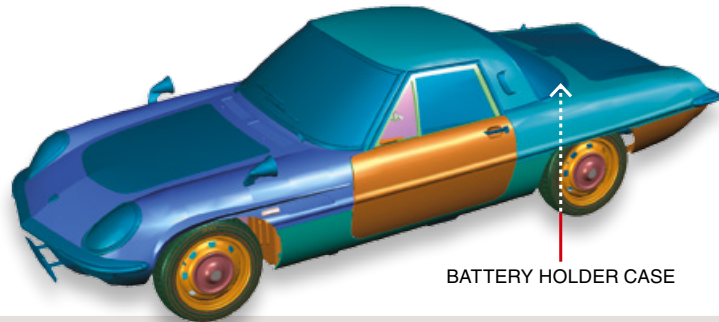
THIS PRODUCT IS NOT A TOY AND MUST BE USED UNDER
THE SUPERVISION OF AN ADULT.

ITEMS MAY VARY FROM THOSE SHOWN.



60 THE BATTERY HOLDER CASE – 2

In this stage you will continue to assemble your model's battery holder case.



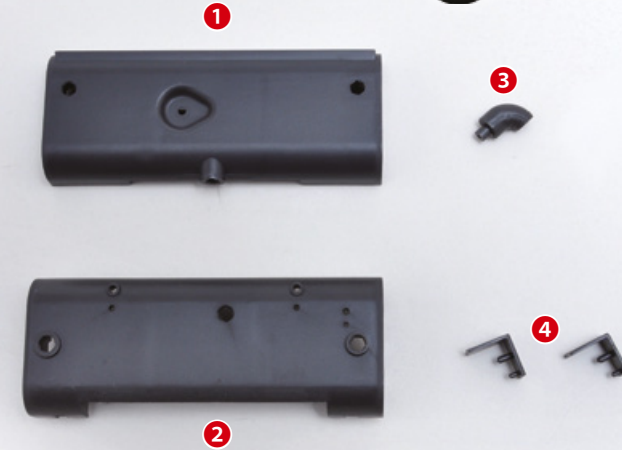
TOOLS NEEDED

- Cross screwdriver no. 1
- Modelling glue

RECOMMENDED TOOLS

- Adhesive tape

LIST OF PIECES



- 1 Case Part A
- 2 Case Part B
- 3 Detail
- 4 Brackets

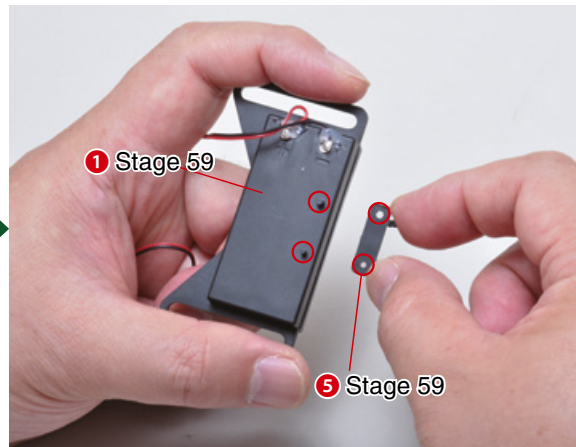
COSMO SPORT

Step

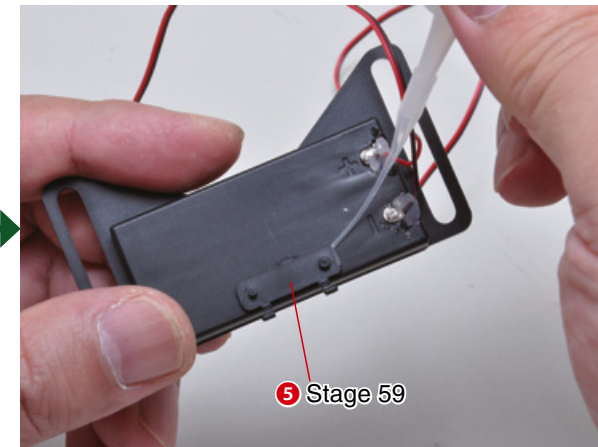
1 Hinge and battery holder



Get the battery holder you received with stage 59 and unwind the wire.



Attach hinge 1 (which you received with stage 59) to the battery holder, positioning the pieces as shown in the photo.



We recommend that you apply a small amount of glue before attaching the hinge completely, this way it will remain firmly secured in place.





COSMO SPORT

Step

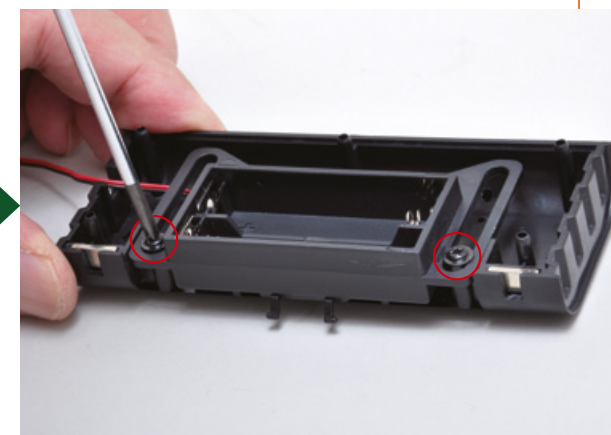
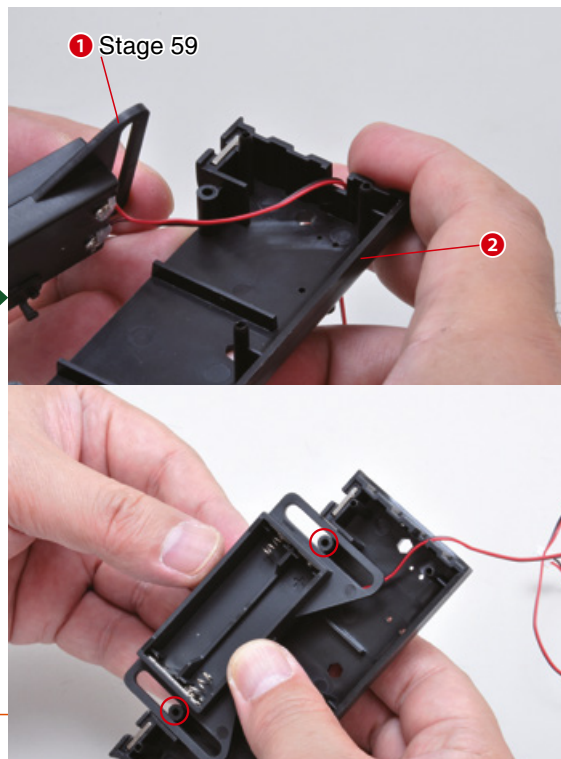
2

The battery holder case – 1



Arrange the wire on the battery holder as shown in the photo, and tape it in place to avoid damaging it.

Attach the battery holder to part B of the battery holder case, as shown in the photo.



Secure the pieces with two of the type A screws you received with stage 59.

COSMO SPORT

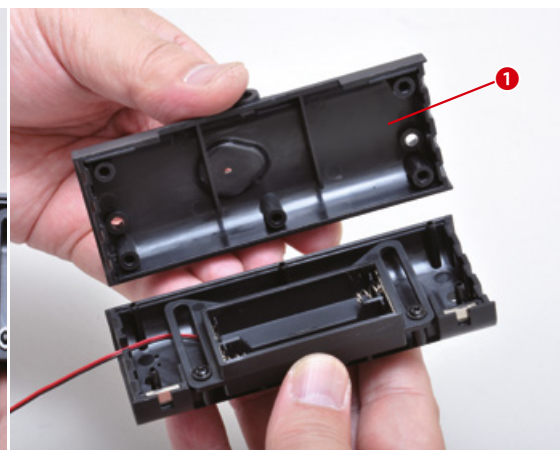
Step

3

The battery holder case – 2



Arrange the wire as shown in the photo and attach part A of the battery holder case to part B.



Press the pieces together until they click into place.



COSMO SPORT

Step

4 The battery holder case – 3



Attach the detail to the battery holder case. The piece only fits one way.



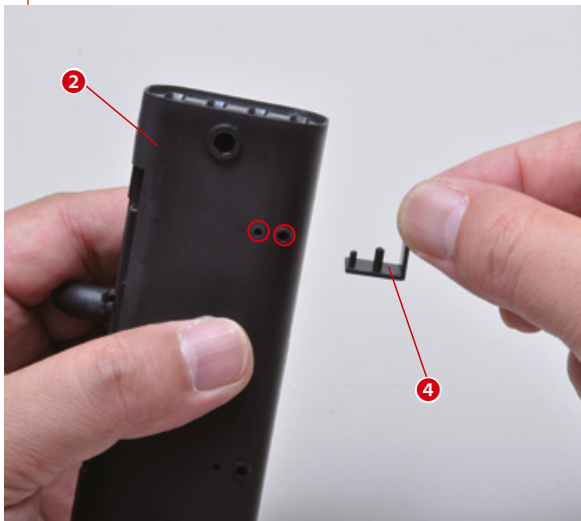
If you like, apply a drop of glue before pushing the detail into place.



COSMO SPORT

Step

5 The battery holder case – 4



Attach one of the two brackets to the case, as shown in the photo.



Press until it clicks into place.



Attach the second bracket in the same way.



COSMO SPORT

Step

6

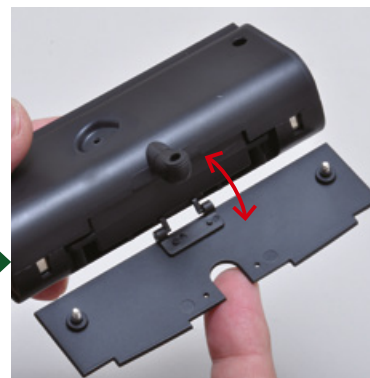
The battery holder case – 5



Get the panel you worked on in stage 59 and attach it to the battery holder case, positioning the pieces as shown in the photo.



Handle the hinges carefully to avoid damaging the pieces.



Check that the panel moves correctly.



COSMO SPORT

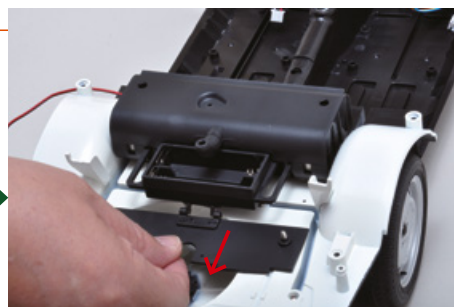
Step

7

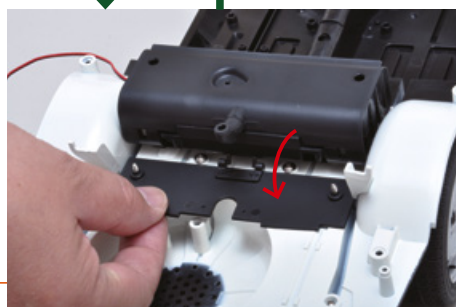
Temporary assembly



Temporarily place the battery holder case on your model, positioning the pieces as shown in the photo.



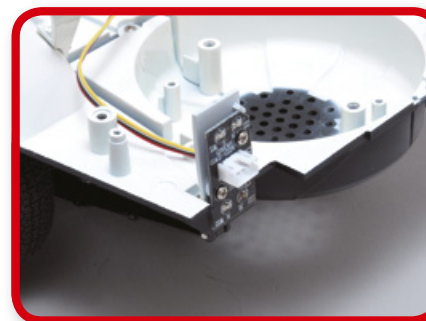
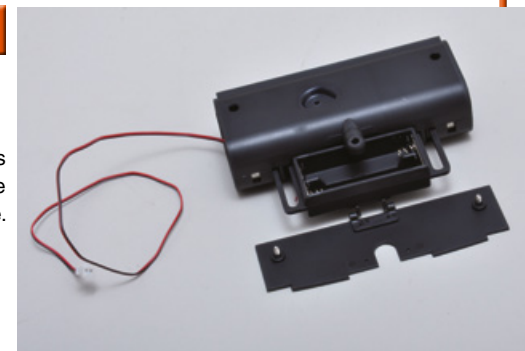
Pull the panel towards you to make sure the battery holder can be taken out easily. Once verified, remove the battery holder case and put it in a safe place.



Position the panel as shown in the photo.

FINAL RESULT

This is the result of this assembly stage. Keep the pieces in a safe place.

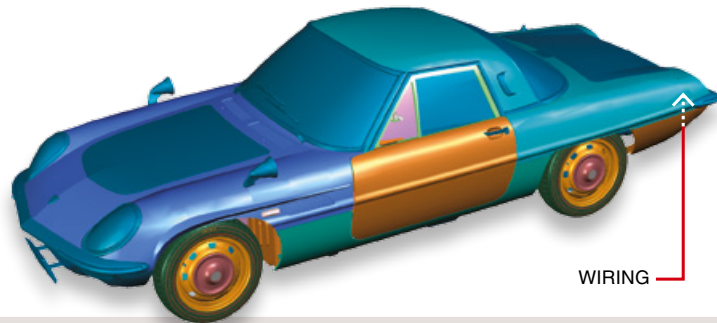


The next stage



61 THE REAR LIGHTS – 1

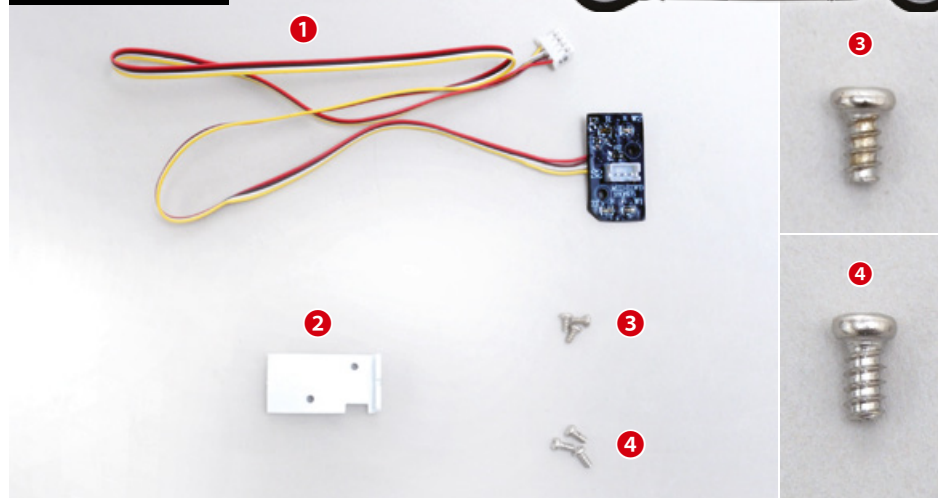
In this stage you will start working on the rear lights, installing the wiring for the rear left light. Handle the components so as to avoid damaging them.



TOOLS NEEDED

- Cross screwdriver no. 1

LIST OF PIECES



- 1 Wiring
- 2 Mount bracket
- 3 Screws A (2 x 4mm) x3
- 4 Screws B (2.3 x 4mm) x3

COSMO SPORT

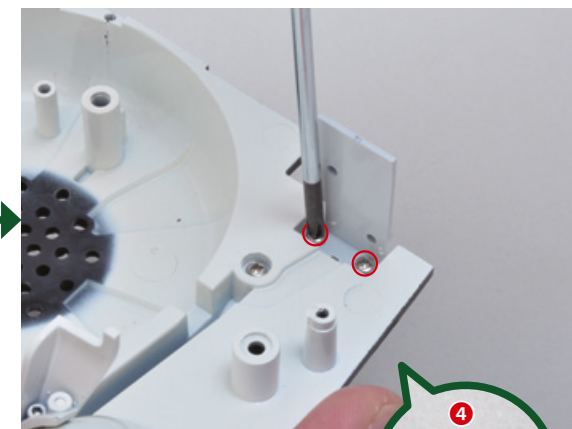
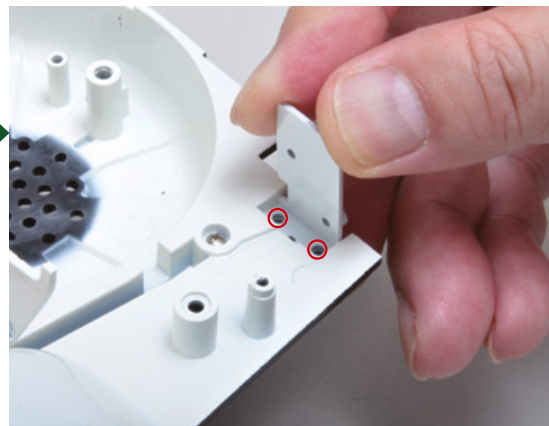
Step

1

The mount bracket



Attach the mount bracket to the back of the platform of your model, positioning the pieces as shown in the photo.



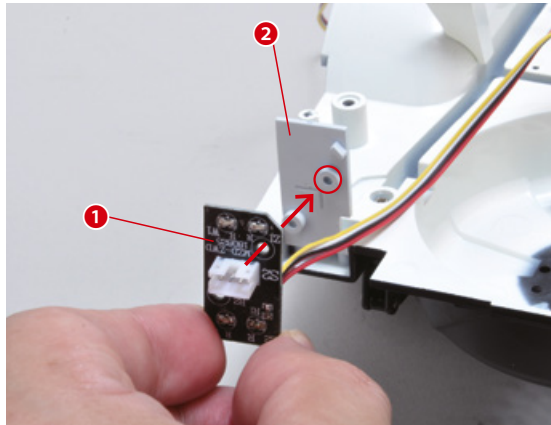
Secure the pieces with two type B screws.



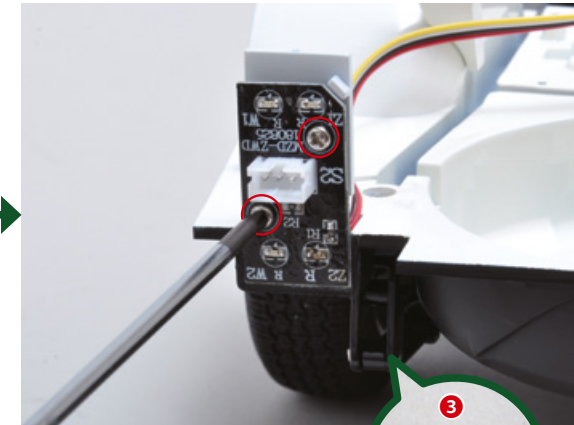
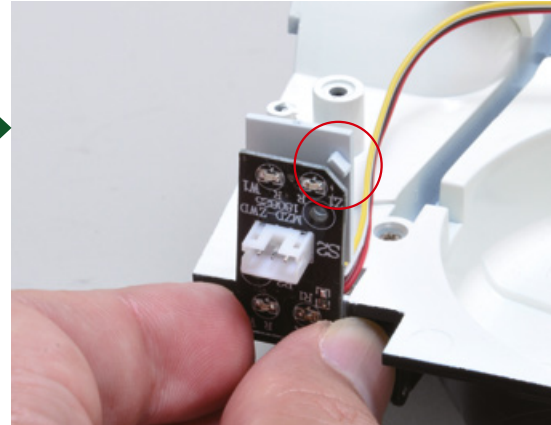


COSMO SPORT

Step 2 The wiring



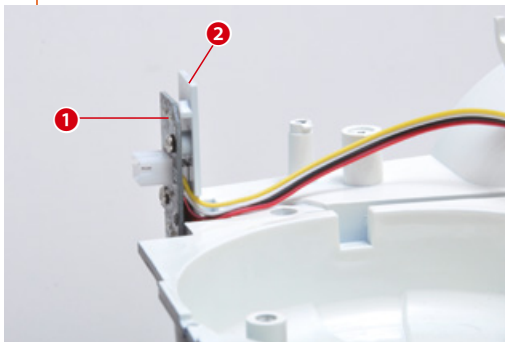
Attach the circuit board to the mount bracket, positioning the pieces as shown in the photo.



Secure the pieces with two type A screws.

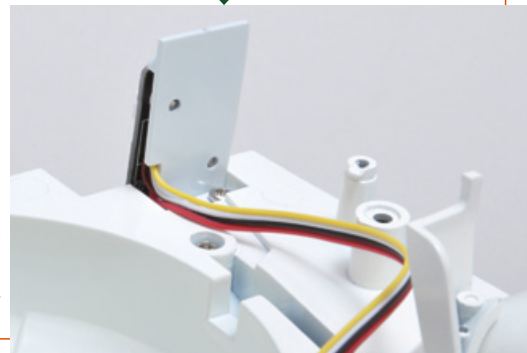
COSMO SPORT

Step 3 The wires



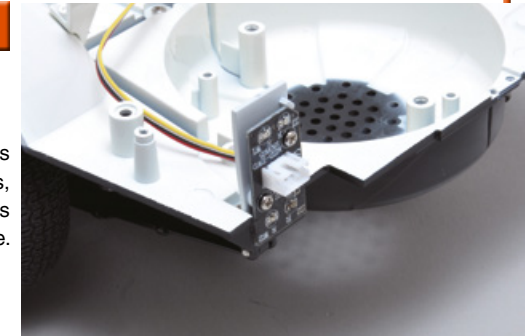
Arrange the wires as shown in the photo.

Be careful not to damage the components while handling them.



FINAL RESULT

This is the result of this assembly session. As always, keep the pieces in a safe place.



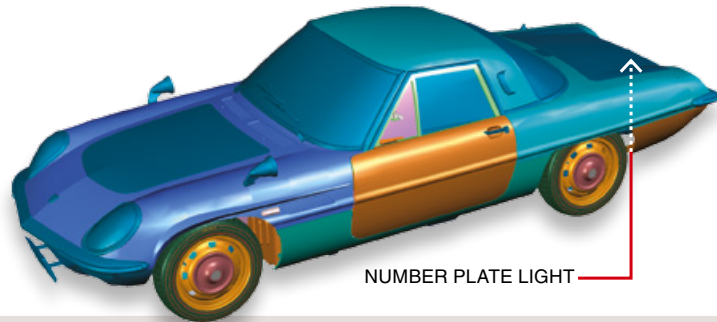
The next stage





62 NUMBER PLATE LIGHT

In this stage you will install the rear number plate light and the jack handle on your model.



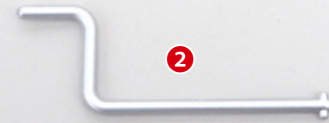
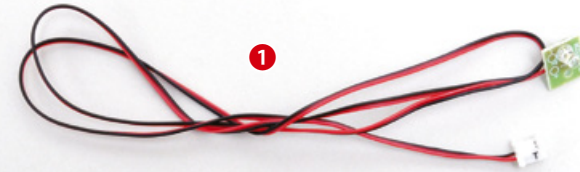
TOOLS NEEDED

- Cross screwdriver no. 1
- Modelling glue

RECOMMENDED TOOLS

- Adhesive tape

LIST OF PIECES

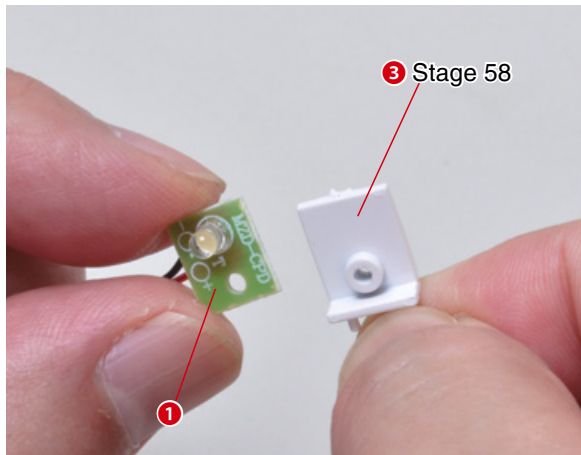


- 1 Wiring
- 2 Jack handle
- 3 Screws (2 x 4mm) x2

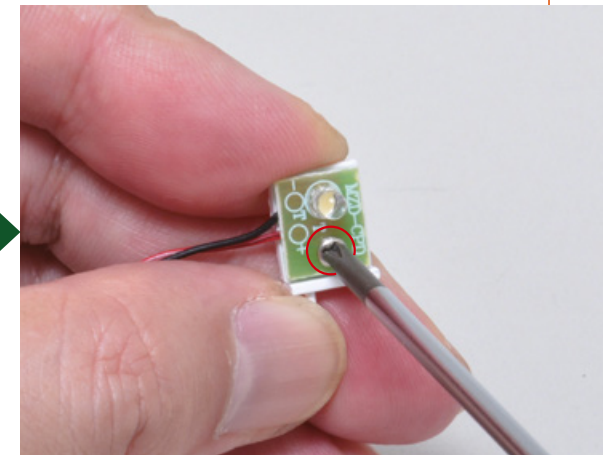
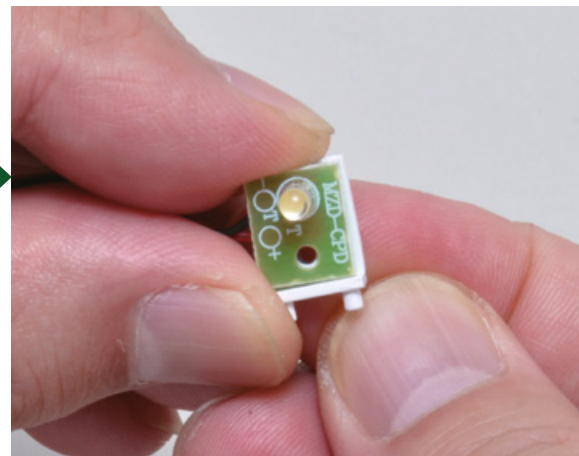
COSMO SPORT

Step

1 The wiring – 1



Get the light bulb holder you received with stage 58 and attach it to the circuit board, positioning the pieces as shown in the photo.

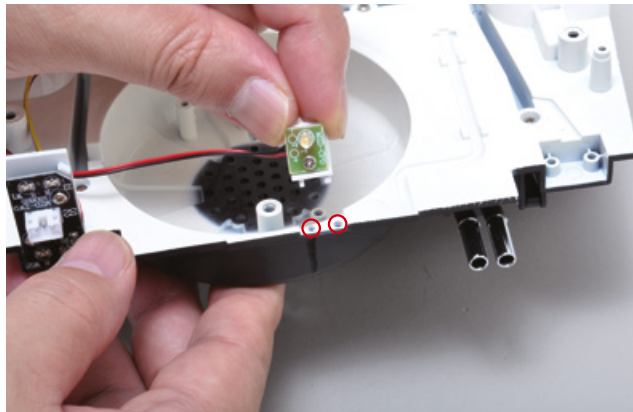


Secure the pieces with one of the screws received with this stage.



COSMO SPORT

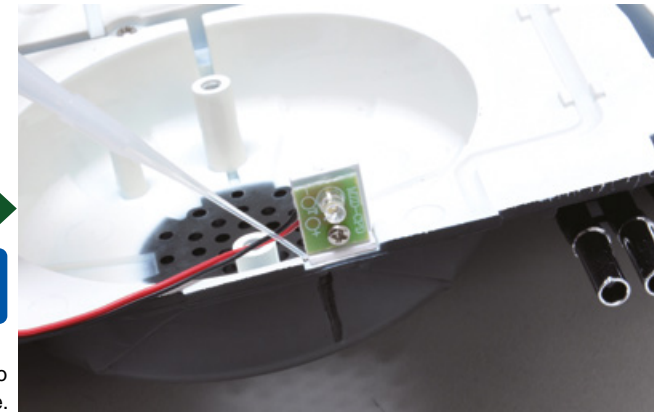
Step 2 The wiring – 2



Attach the holder with the wiring to the back of the platform, positioning the pieces as shown in the photo.

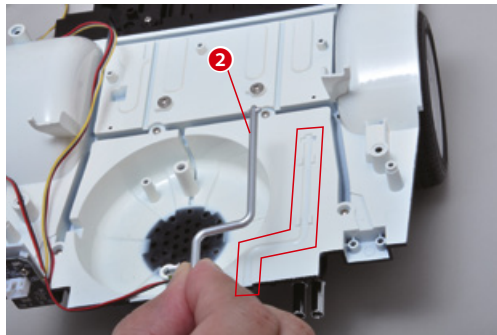


Apply a small amount of glue to secure the holder in place.

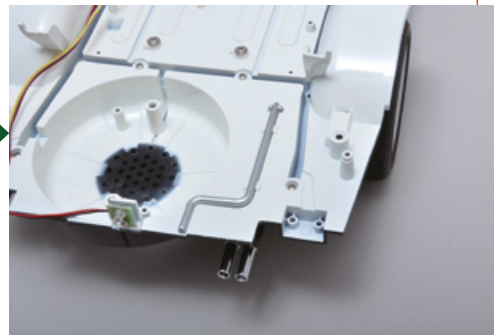


COSMO SPORT

Step 3 The jack handle



Insert the jack handle into its housing on the platform.



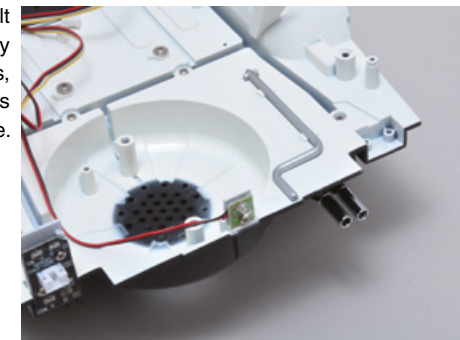
When your model is finished, the handle will be hidden by the boot liner.



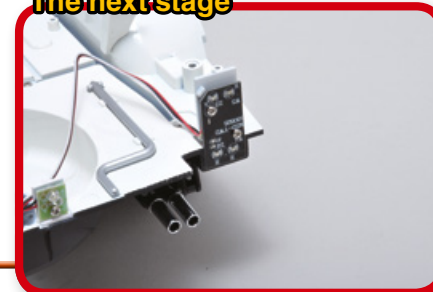
We recommend that you secure the handle in place with a piece of adhesive tape to prevent it from coming out of its housing while you work on the model.

FINAL RESULT

This is the result of this assembly session. As always, keep the pieces in a safe place.



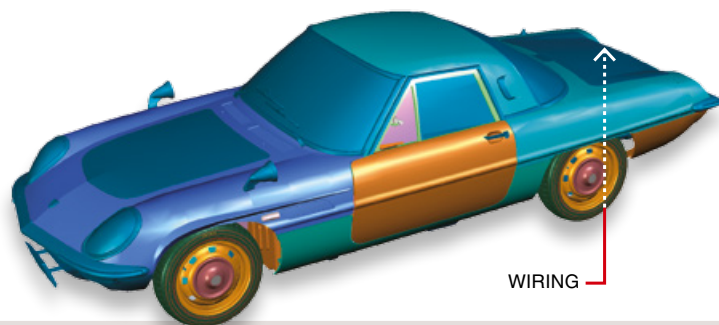
The next stage





63 THE REAR LIGHTS – 2

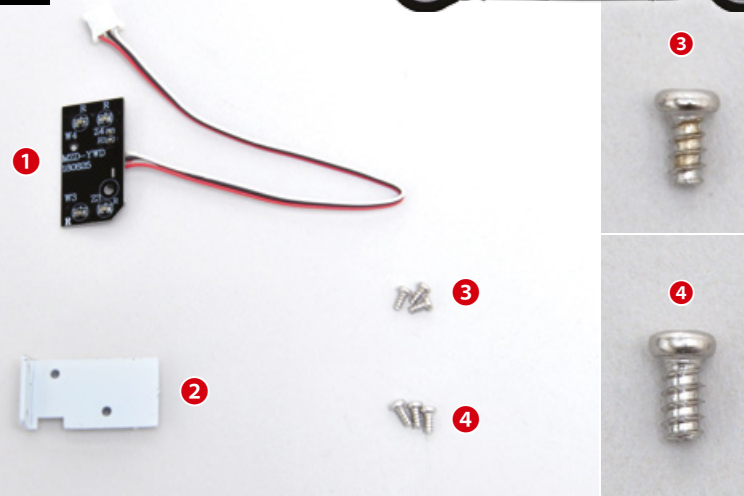
In this stage you will continue to work on the rear lights, installing the rear right light wiring. Handle the components carefully so as to avoid damaging them.



TOOLS NEEDED

- Cross screwdriver no. 1

LIST OF PIECES

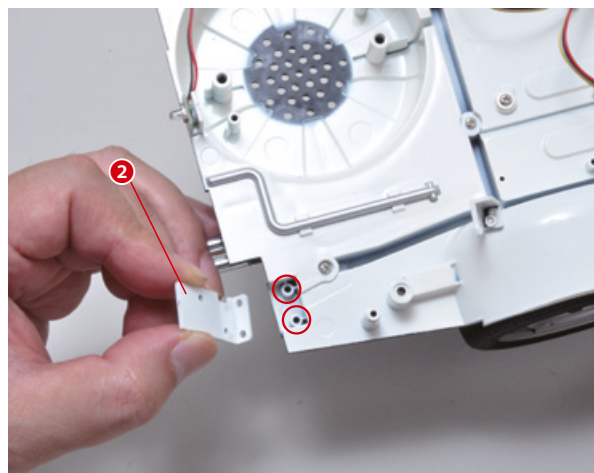


- 1 Wiring
- 2 Mount bracket
- 3 Screws A (2 x 4mm) x3
- 4 Screws B (2.3 x 4mm) x3

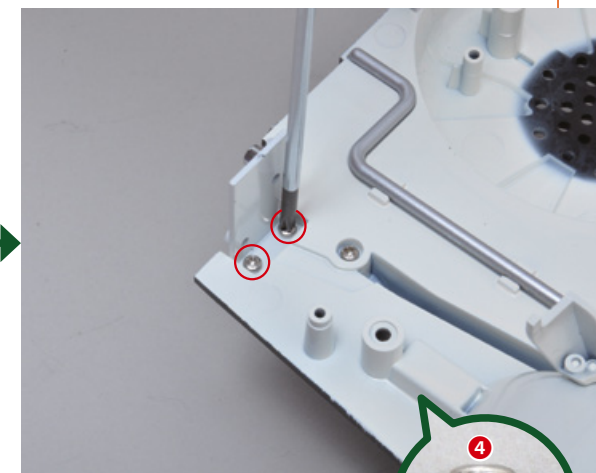
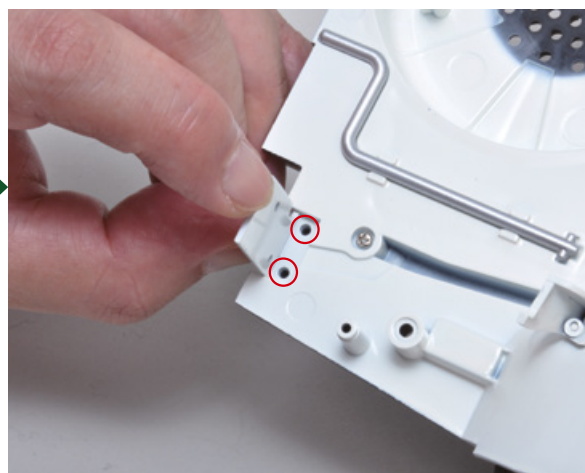
COSMO SPORT

Step

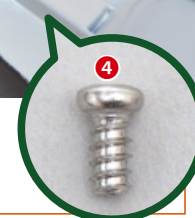
1 The mount bracket



Attach the mount bracket to the back of the platform of your model, positioning the pieces as shown in the photo.



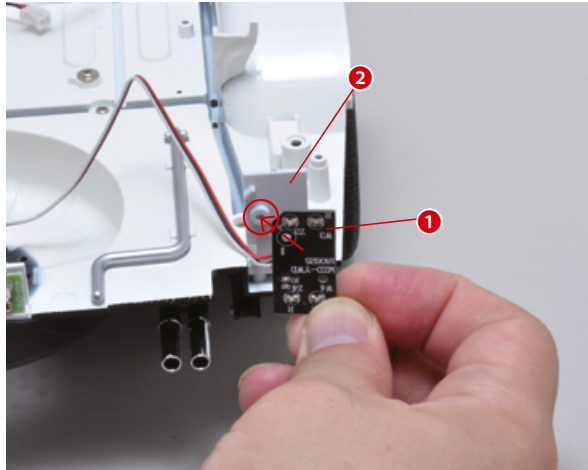
Secure the pieces with two type B screws.



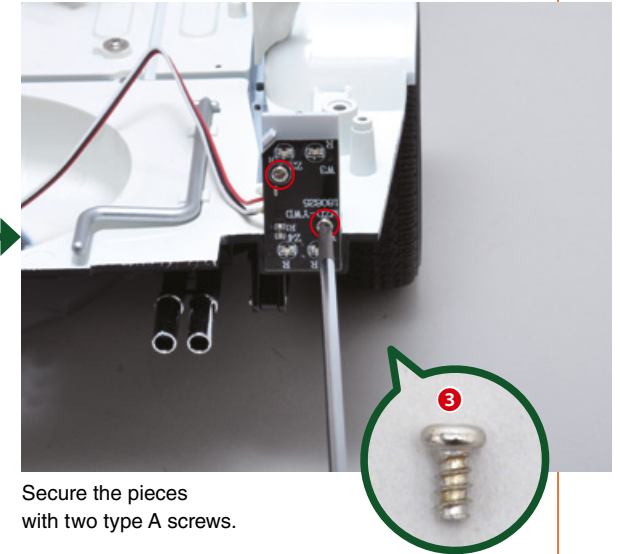


COSMO SPORT

Step 2 The wiring



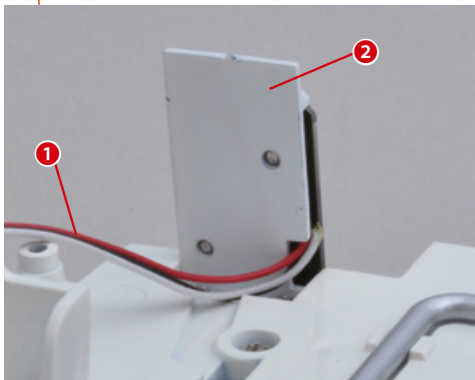
Attach the circuit board to the mount bracket, positioning the pieces as shown in the photo.



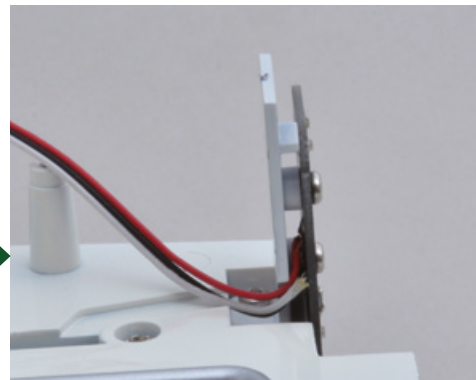
Secure the pieces with two type A screws.

COSMO SPORT

Step 3 The wires



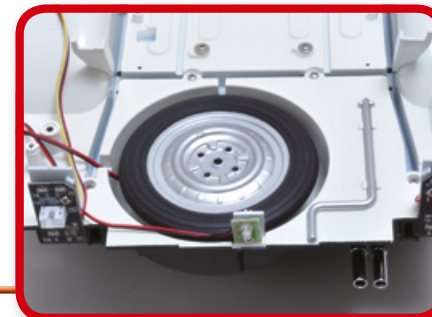
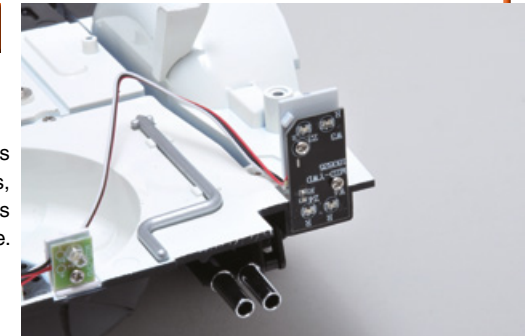
Arrange the wires as shown in the photo.



Be careful not to damage the components while handling them.

FINAL RESULT

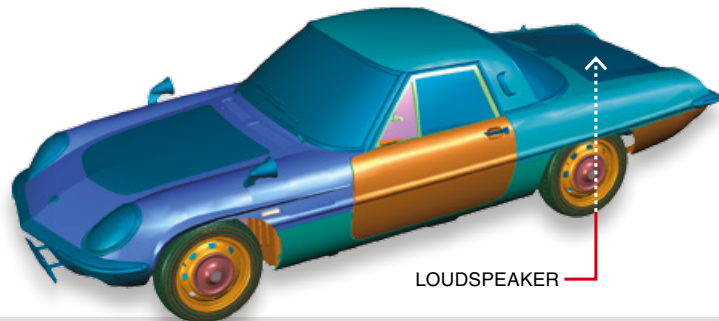
This is the result of this assembly session. As always, keep the pieces in a safe place.



The next stage

64 THE SPEAKER

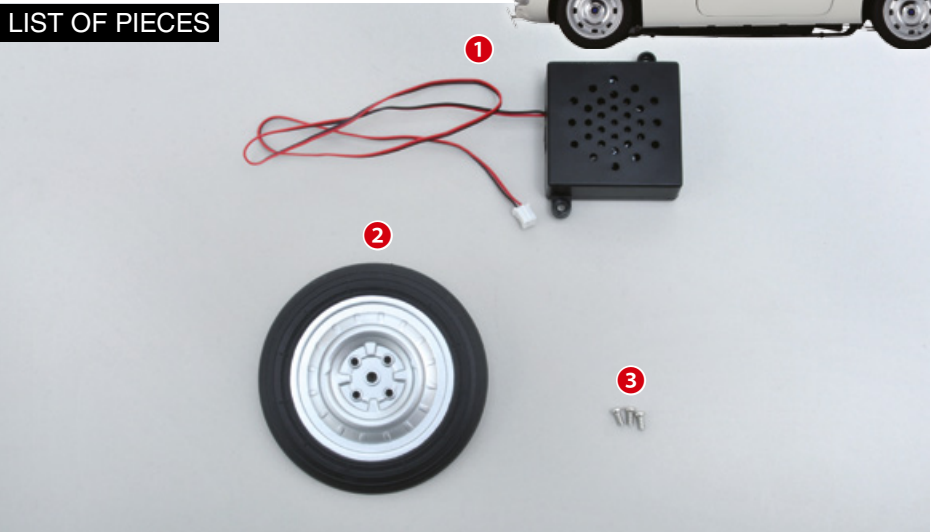
In this stage you will install the speaker for the sound effects of your model, which you will then conceal together with the spare wheel.



TOOLS NEEDED

- Cross screwdriver no. 1

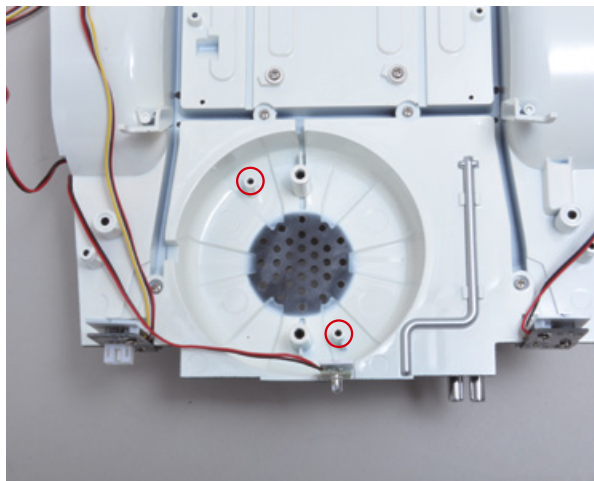
LIST OF PIECES

- 
- 1 Speaker
 - 2 Spare wheel
 - 3 Screws (2.3 x 4mm) x3

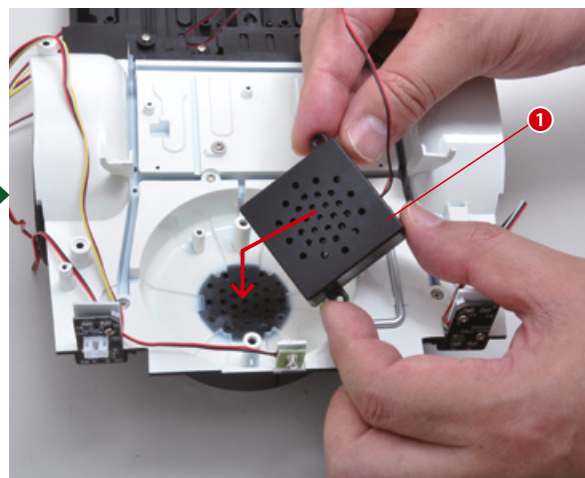
COSMO SPORT

Step

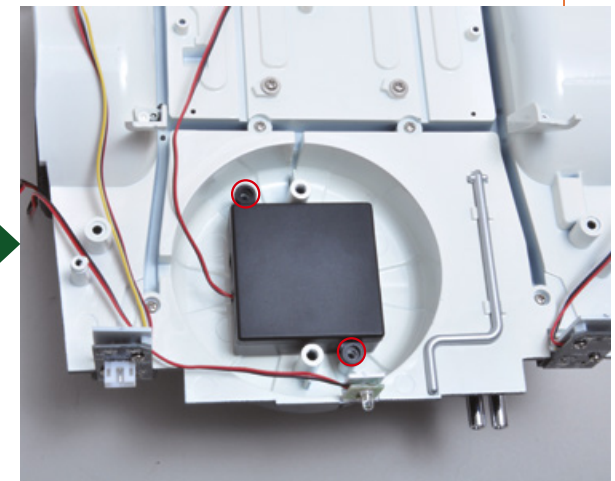
1 The speaker – 1



Identify the holed linchpins you will need to secure the speaker to the platform.



Attach the speaker to the platform, positioning the pieces as shown in the photo.

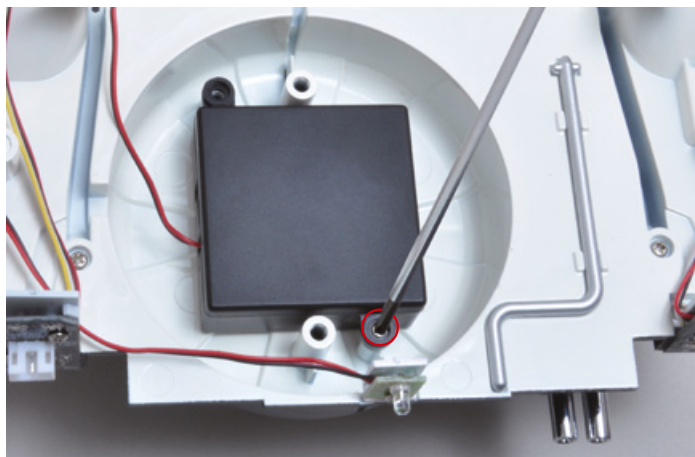




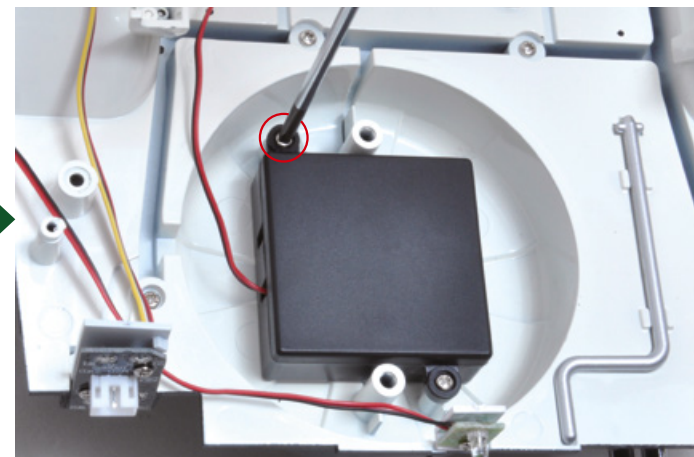
COSMO SPORT

Step

2 The speaker – 2



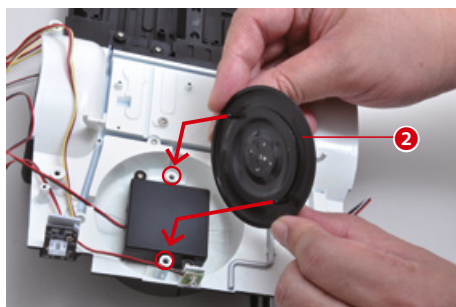
To secure the pieces, insert and tighten two of the screws received with this stage in the holes circled in the photo.



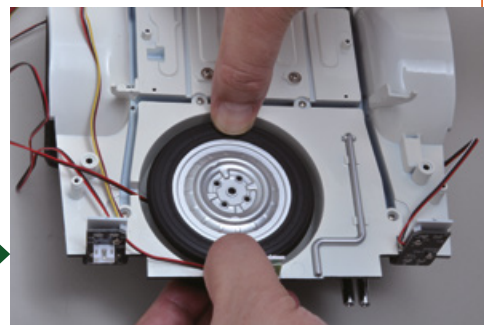
COSMO SPORT

Step

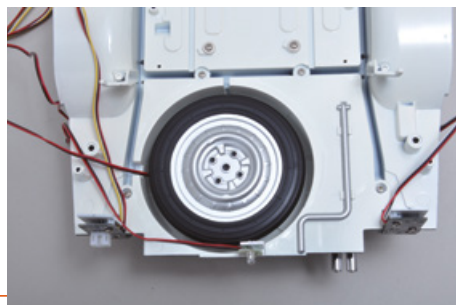
3 Spare wheel



Attach the spare wheel to the platform, positioning the pieces as shown in the photo.

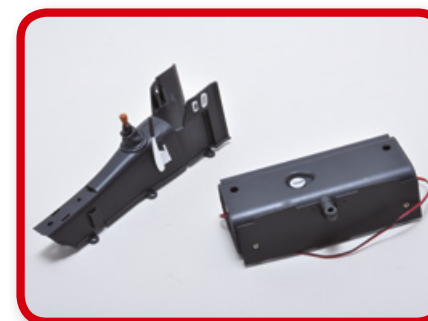
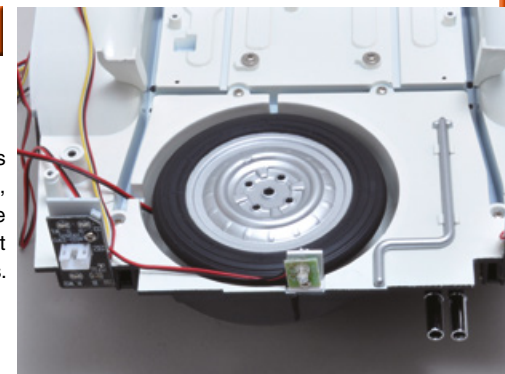


Be careful not to damage the components while handling them.



FINAL RESULT

This is the result of this assembly session. As always, keep everything in a safe place together with the rest of the pieces.

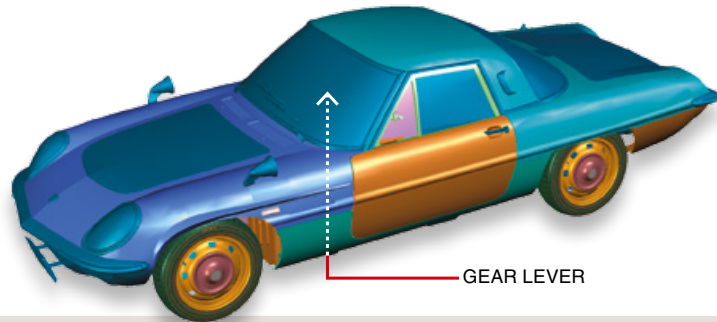


The next stage

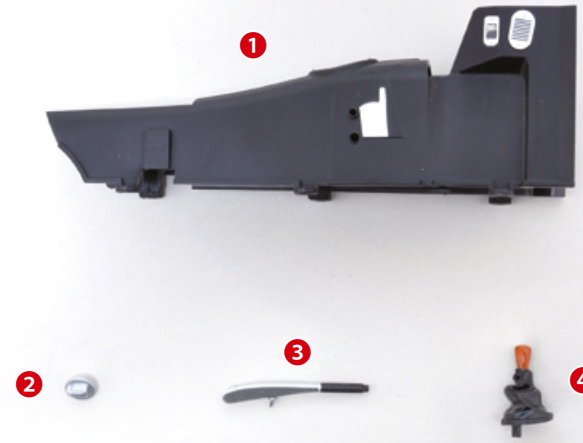


65 THE GEAR LEVER

In this stage you will assemble the gear lever and the handbrake lever. As always, handle the pieces carefully.



LIST OF PIECES



- 1 Platform detail
- 2 Petrol cap
- 3 Handbrake lever
- 4 Gear Lever

COSMO SPORT

Step

1 Petrol cap



Attach the petrol cap to the battery holder case you assembled in the previous stages, positioning the pieces as shown in the photos on this page.

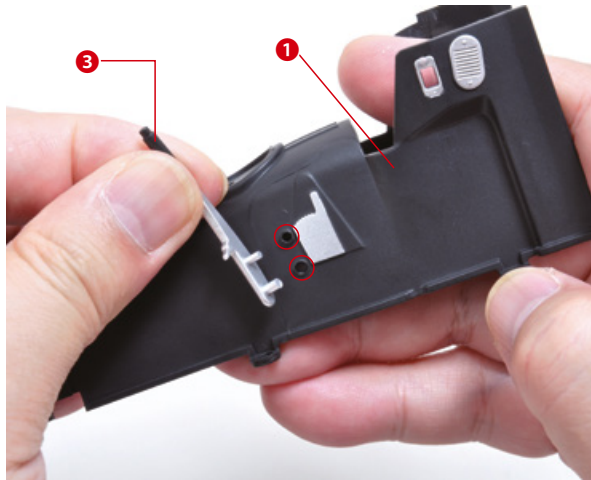


COSMO SPORT

Step

2

The handbrake lever



Attach the handbrake lever to the platform detail, positioning the pieces as shown in the photo.

COSMO SPORT

Step

3

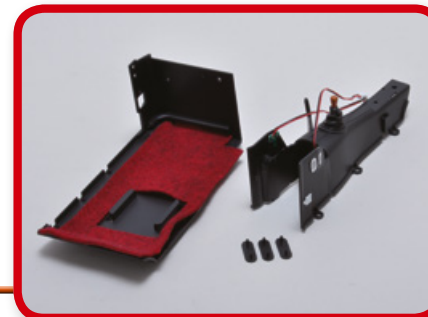
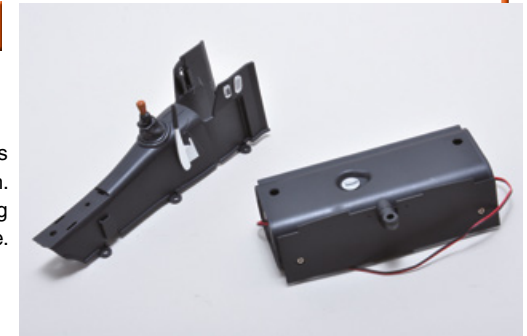
The gear lever



Now attach the gear lever to the platform detail, positioning the pieces as shown in the photo.

FINAL RESULT

This is the result of this simple assembly session.
Keep everything in a safe place.

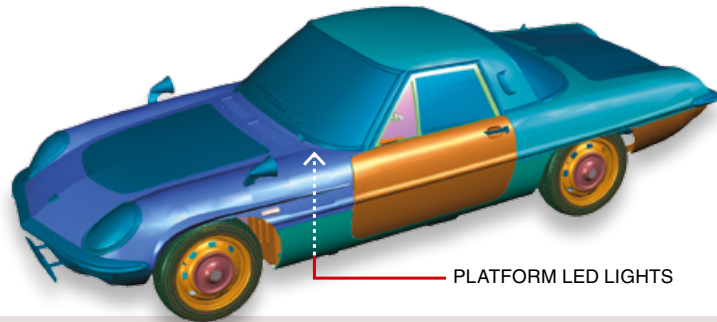


The next stage



66 THE PLATFORM WIRING

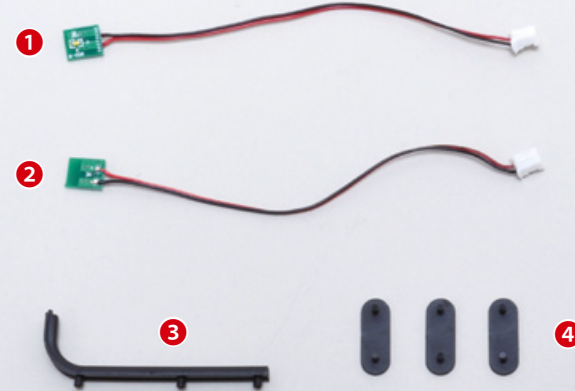
In this stage you will work on the wiring of the platform of your model. Get the passenger seat and its section of the platform, as shown in the photos below.



TOOLS NEEDED

- Adhesive tape

LIST OF PIECES



- 1 Wiring 1 (L)
- 2 Wiring 2 (R)
- 3 Platform detail
- 4 Wire grommets

COSMO SPORT

Step

1

The platform detail



Temporarily remove the passenger seat from the platform.



Position the pieces as shown in the photo and attach the detail to the platform.



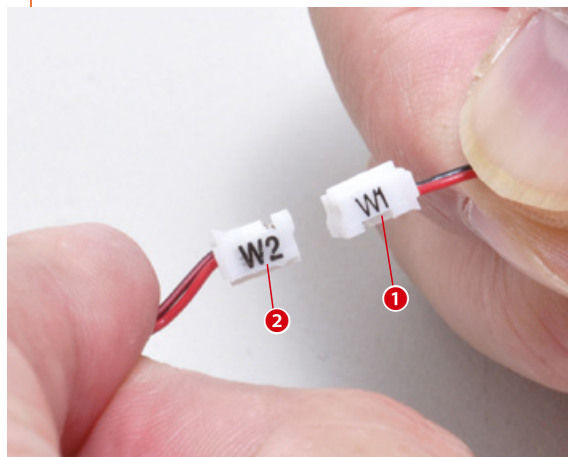


COSMO SPORT

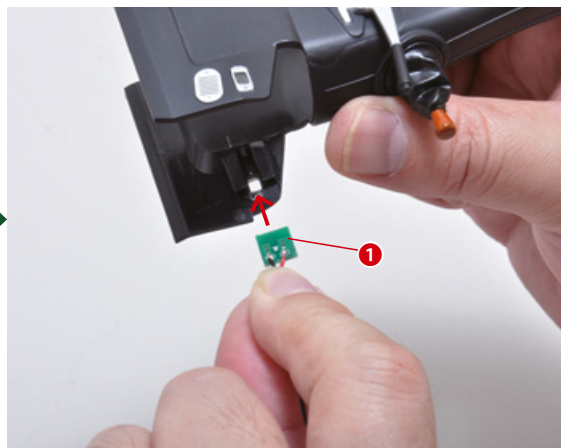
Step

2

The platform LED lights – 1

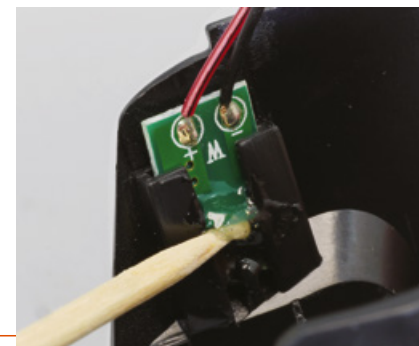


Look at the photo carefully: the two pieces of wiring you received with this stage have different plugs.



Insert the circuit board on wiring 1 into the platform detail you received with stage 65, positioning the pieces as shown in the photo.

Look at the photo to check that you have inserted the piece correctly.



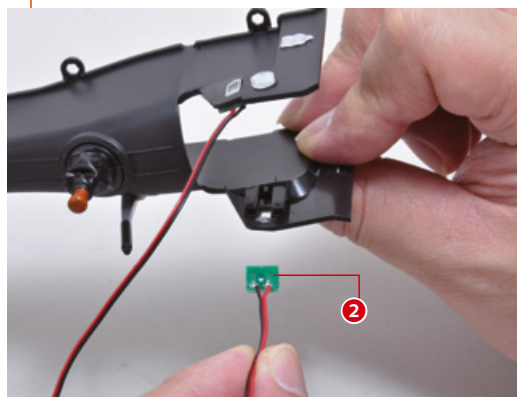
If you like, you can apply a drop of glue to secure the circuit board in place.

COSMO SPORT

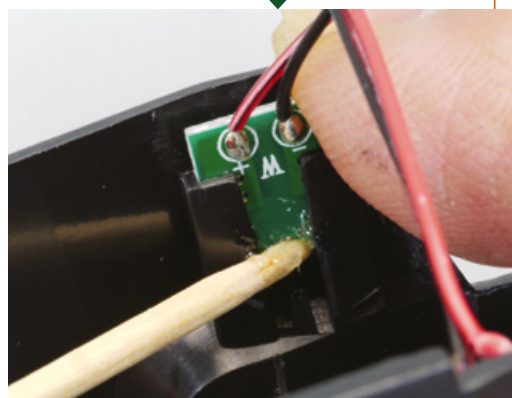
Step

3

The platform LED lights – 2



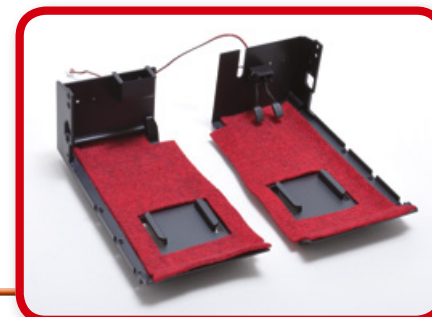
Now insert the circuit board on wiring 2 into the platform detail received with this stage, positioning the pieces as shown in the photo.



Again, you can apply a drop of glue to secure the circuit board in place.

FINAL RESULT

This is the result of this assembly session. As always, keep the pieces in a safe place.

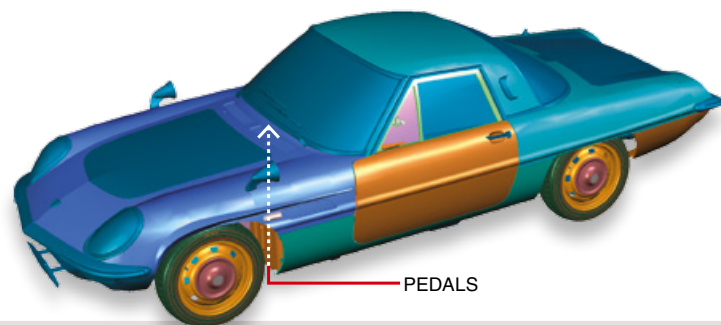


The next stage



67 THE PEDALS

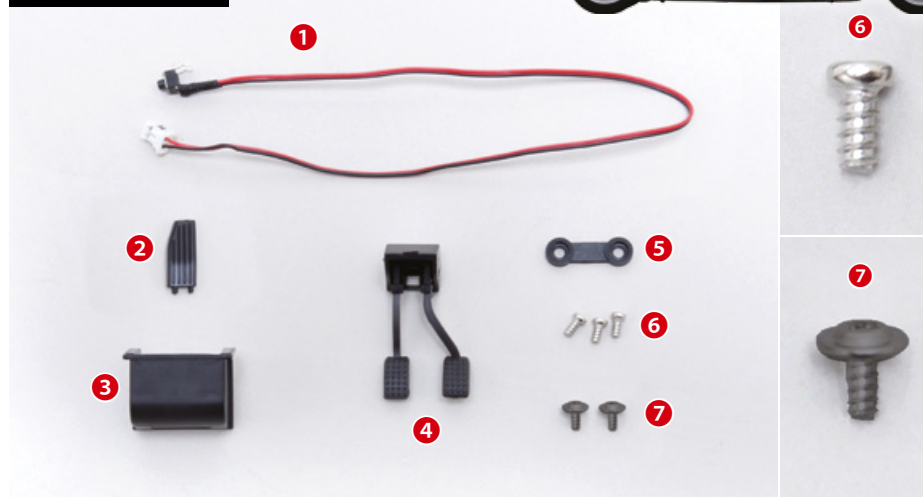
In this stage you will assemble the pedals of your model. As always, handle the components carefully to avoid damaging them.



TOOLS NEEDED

- Cross screwdriver no. 1
- File
- Cutting pliers

LIST OF PIECES



- 1 Wiring
- 2 Foot rest
- 3 Valve box
- 4 Pedals
- 5 Bracket

- 6 Screws A (2.3 x 4mm) x3
- 7 Screws B (2.3 x 4 mm) x2

COSMO SPORT

Step

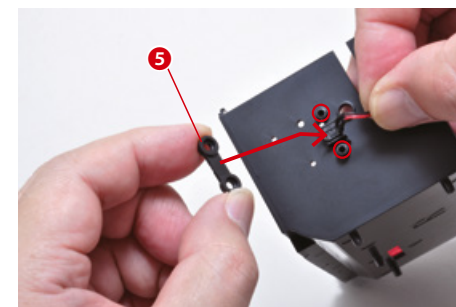
1 The wiring



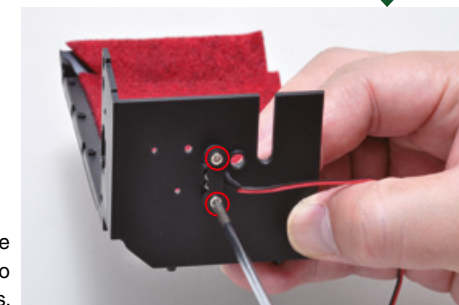
Get the driver's seat and its section of the platform and temporarily remove the seat.



Attach the wiring switch to the section of the platform.



Attach the bracket to the section of the platform.

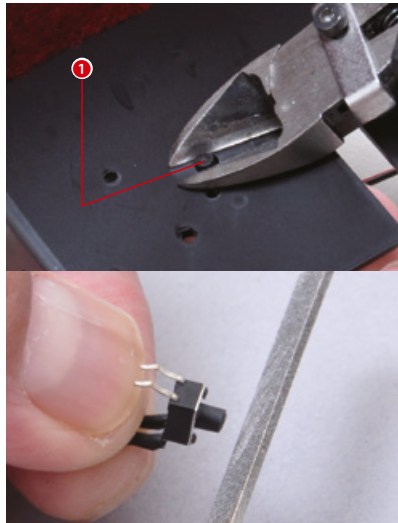


Secure the pieces with two type A screws.

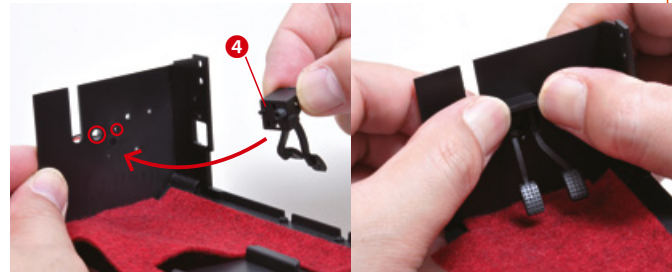


COSMO SPORT

Step 2 The pedals



If there are any parts of the components protruding from the platform, we recommend that you remove them with cutting pliers or file them down.



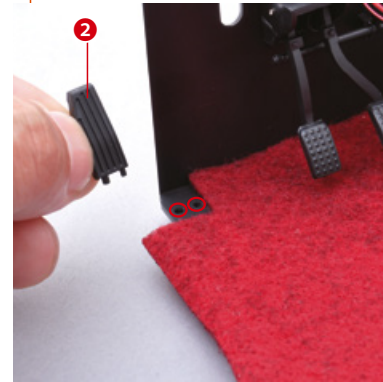
Attach the pedals to the section of the platform, positioning the pieces as shown in the photo.



Secure the pieces with a type B screw.

COSMO SPORT

Step 3 The footrest



Now attach the footrest to the section of the platform, as shown in the photo.

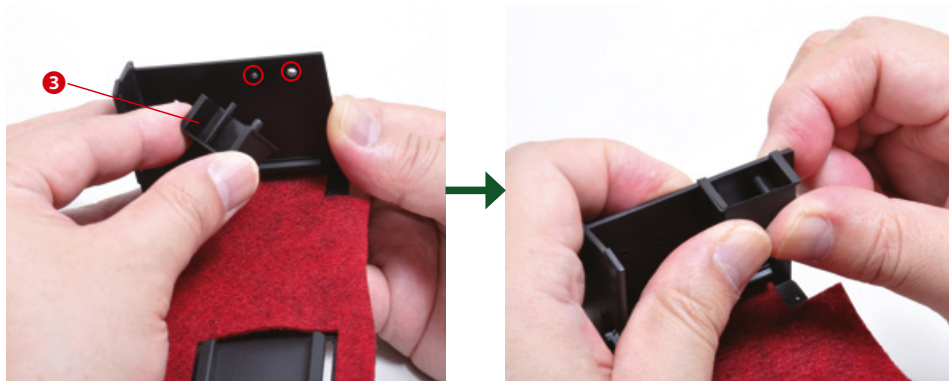


If you like, you can secure the piece with a drop of glue.



COSMO SPORT

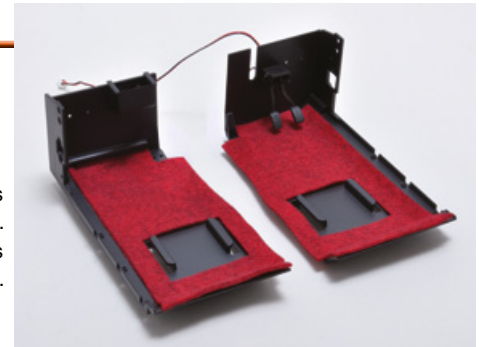
Step 4 The valve box



Get the passenger side of the platform you worked on in stage 66, and attach the valve box to it, positioning the pieces as shown in the photo.

FINAL RESULT

This is the result of this assembly session. As always, keep the pieces in a safe place.

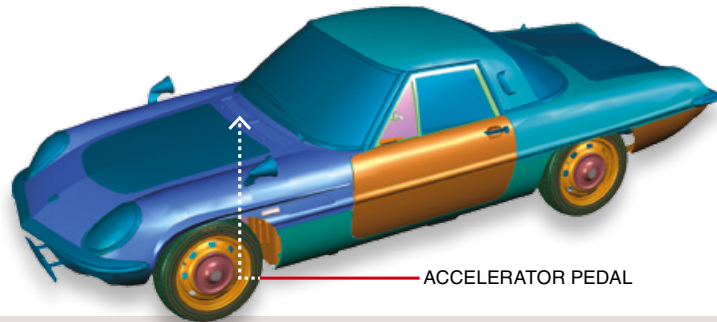


The next stage



68 THE ACCELERATOR PEDAL

In this stage you will continue to work on your model's pedals. As always, follow our instructions and handle the components carefully.



ACCELERATOR PEDAL

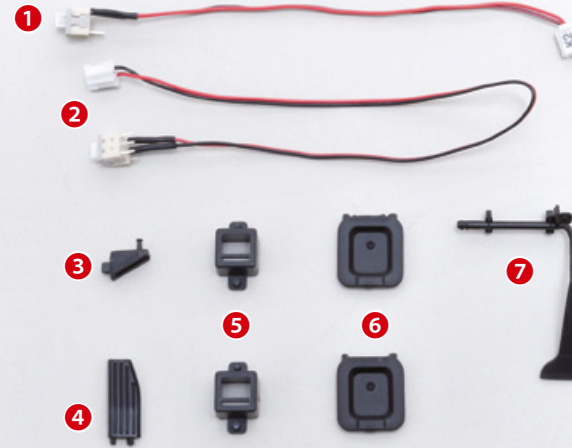
TOOLS NEEDED

- Adhesive tape

RECOMMENDED TOOLS

- Modelling glue

LIST OF PIECES



- 1 Wiring 1 (R)
- 2 Wiring 2 (L)
- 3 Car boot release button
- 4 Foot rest
- 5 Wiring holders
- 6 Air vents
- 7 Accelerator pedal

COSMO SPORT

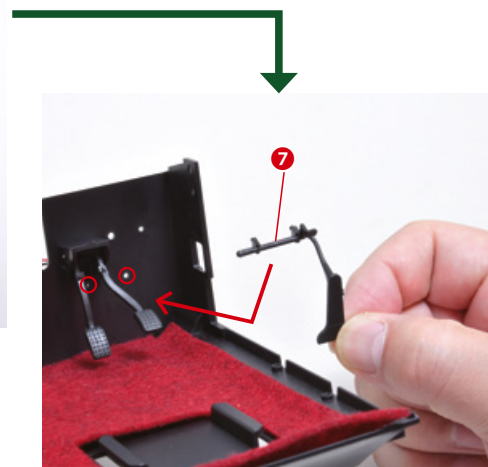
Step

1

Accelerator pedal



Get the driver's side of the platform, which you worked on in stage 67.



Attach the accelerator pedal to it.



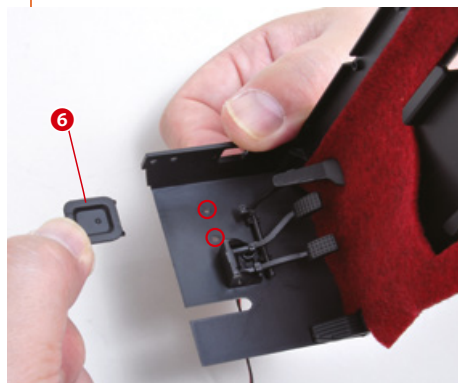
Position the pieces as shown in the photo. Be careful not to damage the pedals you have already attached.



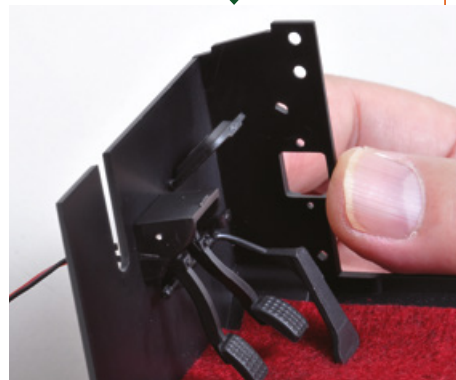


COSMO SPORT

Step 2 The vents – 1



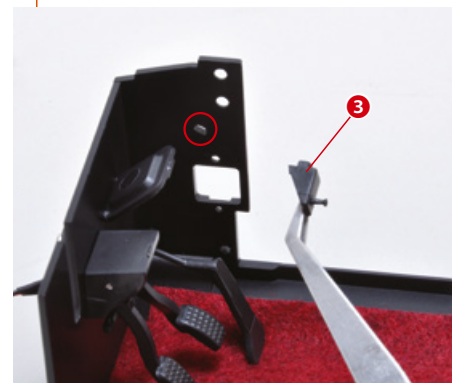
Attach one of the air vents to the platform, positioning the pieces as shown in the photo.



If you like, you can secure the components with a drop of glue.

COSMO SPORT

Step 3 Car boot release button



Now attach the car boot release button to the platform, positioning the pieces as shown in the photo.



If you like, you can secure the components with a drop of glue.

COSMO SPORT

Step 4 The footrest



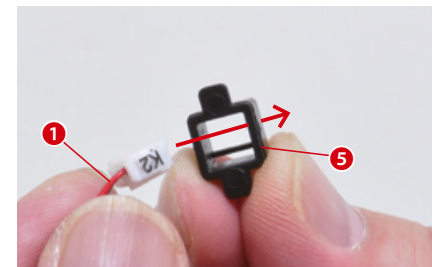
Now get the passenger side of the platform and attach the footrest you received with this stage.



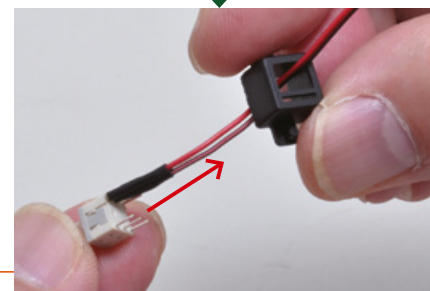
If you like, you can secure the components with a drop of glue.

COSMO SPORT

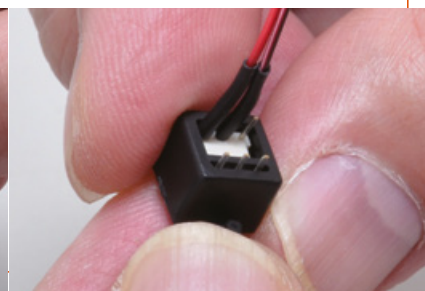
Step 5 The wiring – 1



Insert the plug on wiring 1 into one of the holders, positioning the pieces as shown in the photo.



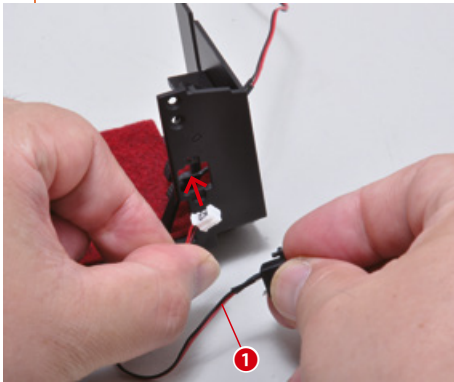
Pass the wiring through the holder until you reach the switch.



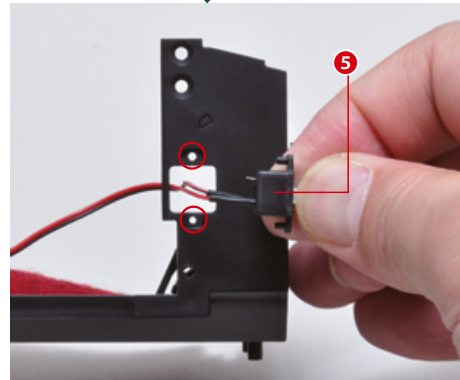


COSMO SPORT

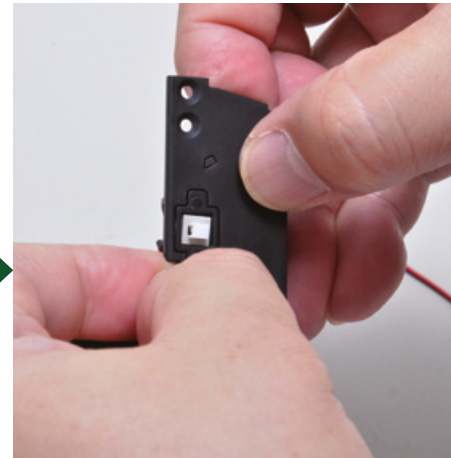
Step 6 The wiring – 2



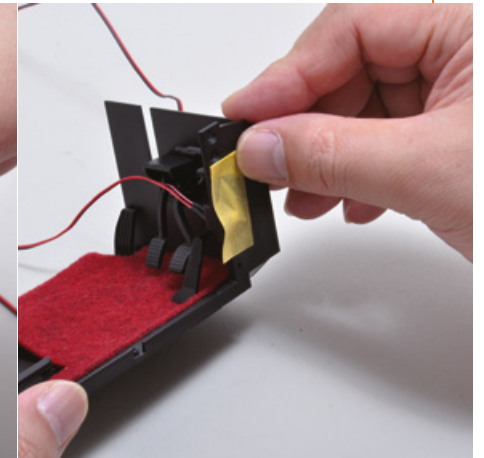
Insert the plug on wiring 1 into the hole in the driver's side of the platform, as shown in the photo.



Position the holder as shown in the photo and attach it to the platform.

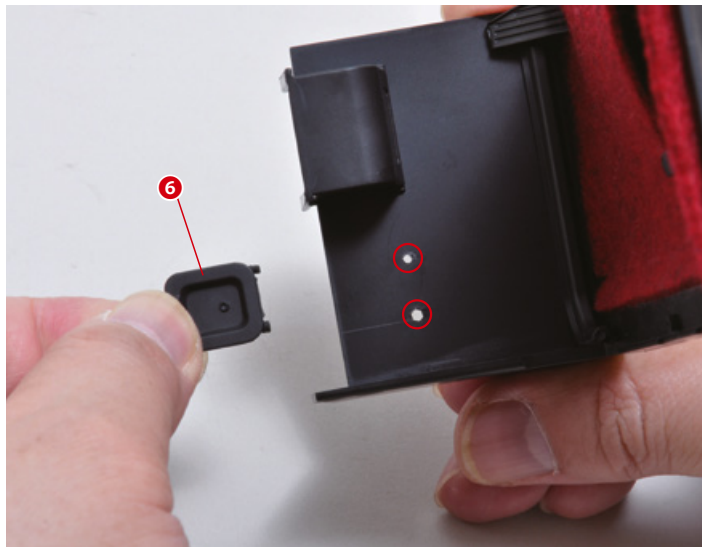


Press the components together and temporarily secure them with a piece of adhesive tape.



COSMO SPORT

Step 7 The vents – 2



Now attach the second air vent to the passenger side of the platform, as shown in the photo.



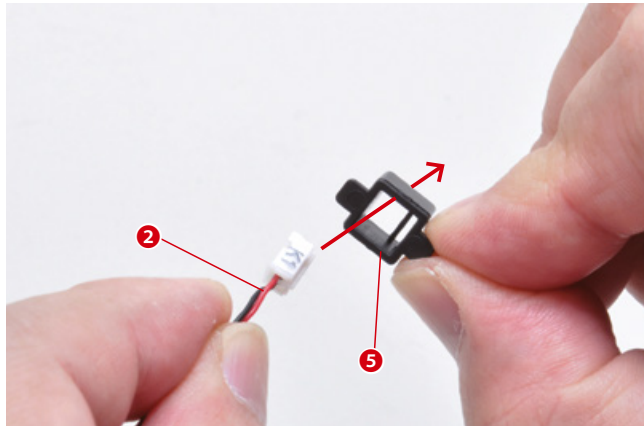
If you like, you can secure the components with a drop of glue.



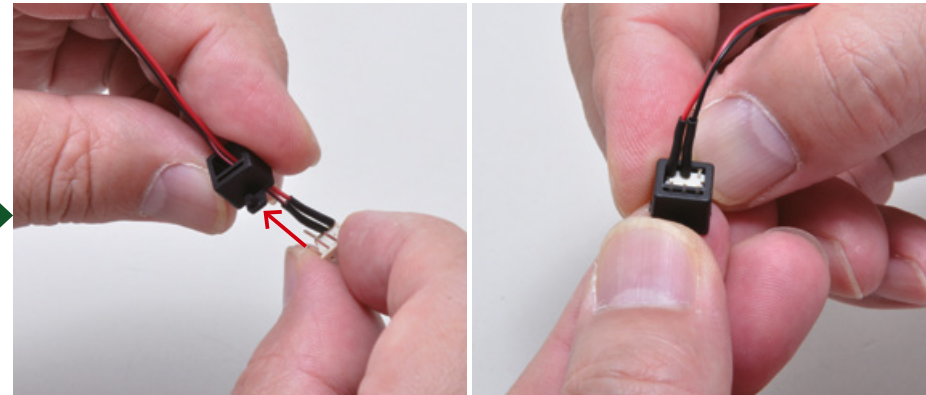


COSMO SPORT

Step 8 The wiring – 3



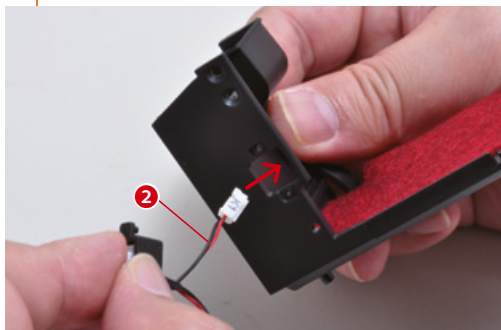
Insert the plug on wiring 2 into the second holder, positioning the pieces as shown in the photo.



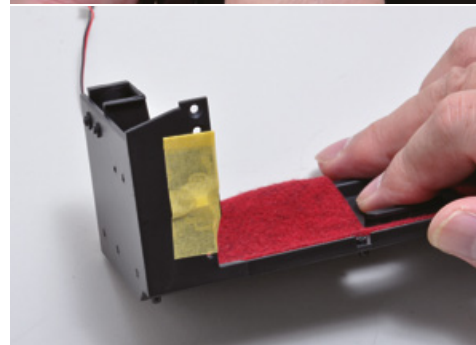
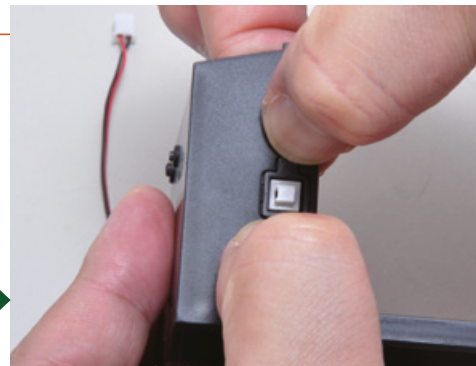
Pass the wiring through the holder until you reach the switch.

COSMO SPORT

Step 9 The wiring – 4

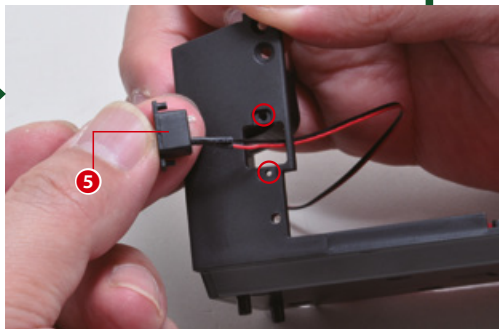


Insert the plug on wiring 2 into the hole in the passenger side of the platform, as shown in the photo.



Press the components together and temporarily secure them with a piece of adhesive tape.

Position the holder as shown in the photo and attach it to the platform.



FINAL RESULT



This is the result of this satisfying assembly session. As always, keep the pieces in a safe place.

The next stage

