



Cosmo **SPORT**



PACK 09

DEAGOSTINI
MODELSPACE
www.model-space.com



Cosmo **SPORT**

STAGE

69	PLATFORM DETAILS
70	THE REAR SEATS
71	THE DASHBOARD – 1
72	THE SPEAKERS
73	THE DASHBOARD – 2
74	THE STEERING WHEEL
75	THE REMOTE CONTROL
76	THE LEFT DOOR – 1
77	THE LEFT DOOR – 2

P.

164
166
168
170
172
178
184
190
192



DEAGOSTINI
MODELSPACE™
www.model-space.com

Designed and produced by Milanoedit srl – www.milanoedit.com

Published by De Agostini Publishing S.p.A., 28100 Novara,
Via G. da Verrazzano 15

All rights reserved © 2020

NOT SUITABLE FOR CHILDREN UNDER THE AGE OF 14.

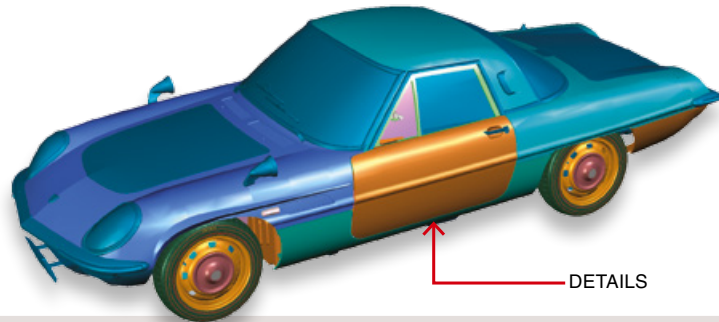
THIS PRODUCT IS NOT A TOY AND MUST BE USED UNDER
THE SUPERVISION OF AN ADULT.

ITEMS MAY VARY FROM THOSE SHOWN.



69 PLATFORM DETAILS

In this stage you will attach detail elements to the platform and add a compartment to the gearbox.



TOOLS NEEDED

- Cross screwdriver no. 0

LIST OF PIECES

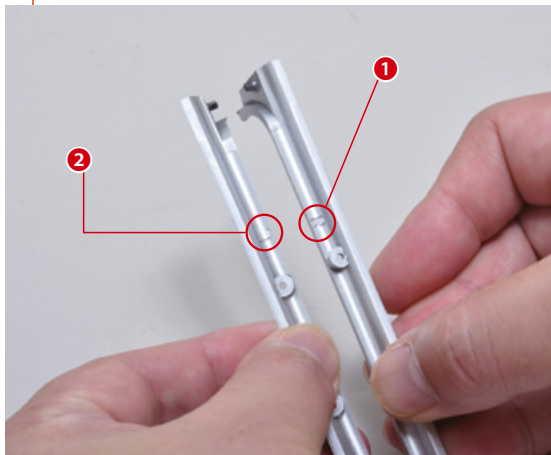


- 1 Detail R
- 2 Detail L
- 3 Compartment
- 4 Screws (1.7 x 4mm) x7

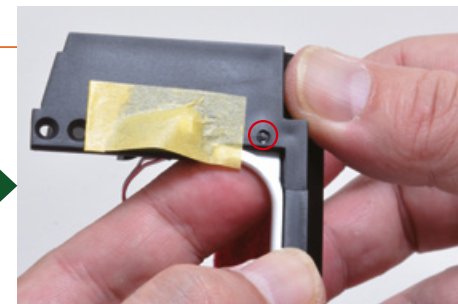
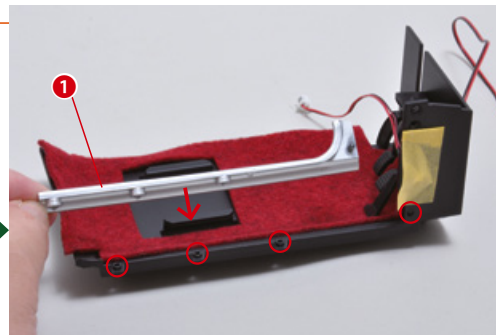
COSMO SPORT

Step

1 The details – 1



The two platform details can be distinguished by the letters stamped on their inner side, as shown in the photo.



Check that the linchpin on the detail is inserted into the hole circled in the photo.

Attach detail R to the right section of the platform (the driver's side), positioning the pieces as shown in the photo.



Secure the pieces together with three of the screws received with this stage.



COSMO SPORT

Step

2 The details – 2



Now attach detail L to the left section of the platform, as shown in the photo.



Check that the linchpin on the detail is inserted into the hole circled in the photo.



Secure the pieces together with three of the screws received with this stage.

COSMO SPORT

Step

3 The compartment



Attach the compartment to the gearbox, positioning the pieces as shown in the photo.



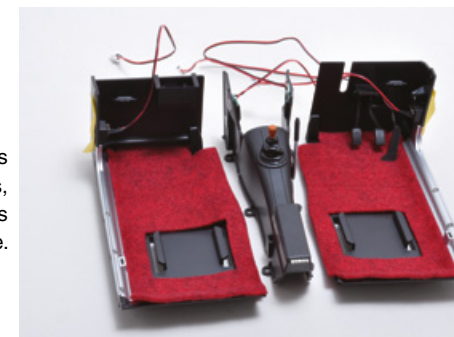
Press until the components click into place.



Make sure the compartment opens and closes smoothly.

FINAL RESULT

This is the result of this assembly session. As always, keep the pieces in a safe place.

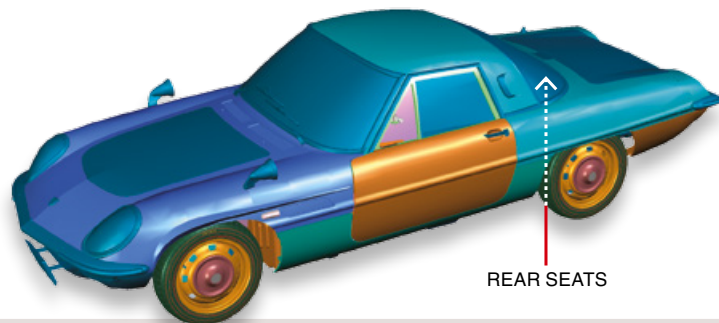


The next stage



70 THE REAR SEATS

In this stage you will work on the rear seats of your model.
Follow the instructions and explanatory photographs carefully.



TOOLS NEEDED

- Cross screwdriver no. 0
- Scissors

LIST OF PIECES



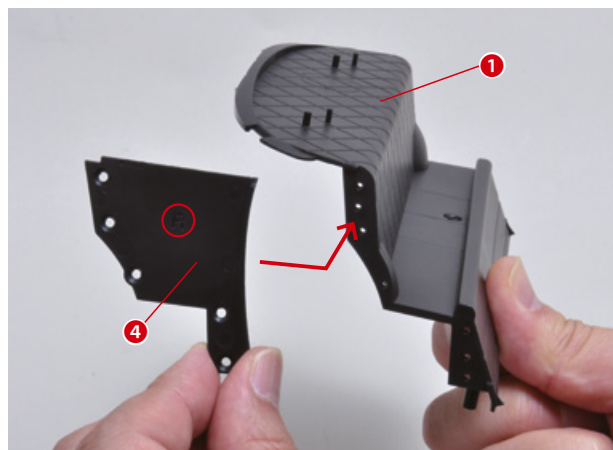
- 1 Rear seats
- 2 Seat cover
- 3 Side panel L
- 4 Side panel R
- 5 Double-sided adhesive sheet
- 6 Screws (1.7 x 3mm) x12

COSMO SPORT

Step

1

The rear seats – 1



To attach the rear seats to side panel R, position the pieces as shown in the photo.



Join the two components together.

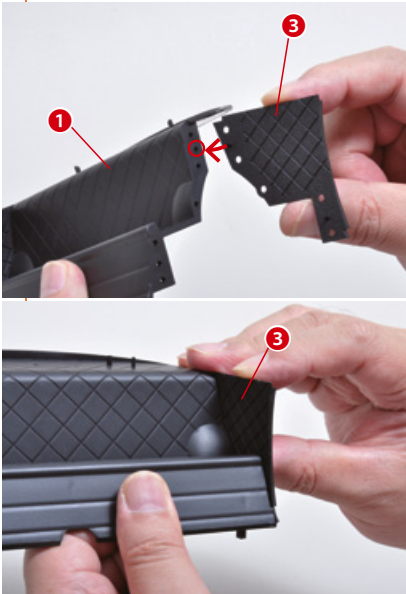


Secure the pieces with five of the screws received with this stage.



COSMO SPORT

Step 2 The rear seats – 2

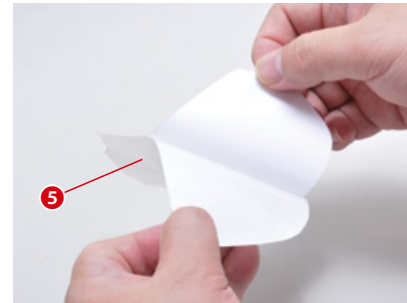


Secure the pieces with five of the screws you received at this stage.

Repeat step 1 to attach panel L to the other side of the seats.

COSMO SPORT

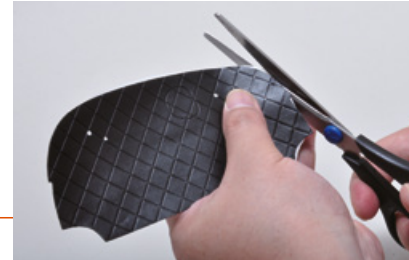
Step 3 The rear seats – 3



Remove the protective paper from one side of the double-sided adhesive sheet.



Attach the seat cover to the sheet, using the shape of the pieces to help you.



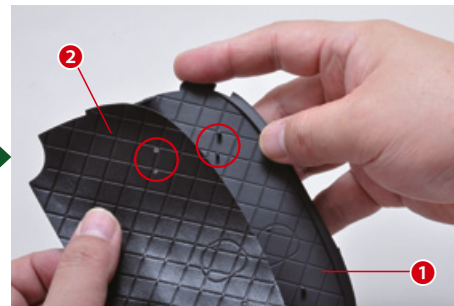
Use scissors to remove the protruding parts of the cover.

COSMO SPORT

Step 4 The rear seats – 4



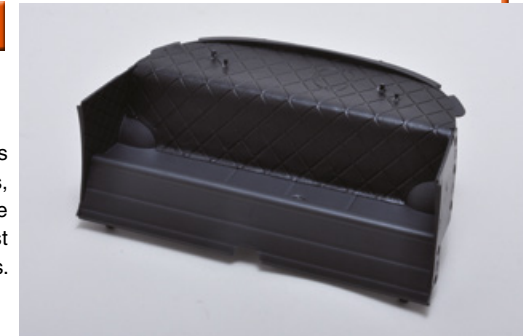
Remove the protective paper on the other side of the double-sided adhesive sheet.



Position the pieces as shown in the photo and attach the cover to the rear seats.

FINAL RESULT

This is the result of this assembly stage. As always, keep everything in a safe place along with the rest of the pieces.

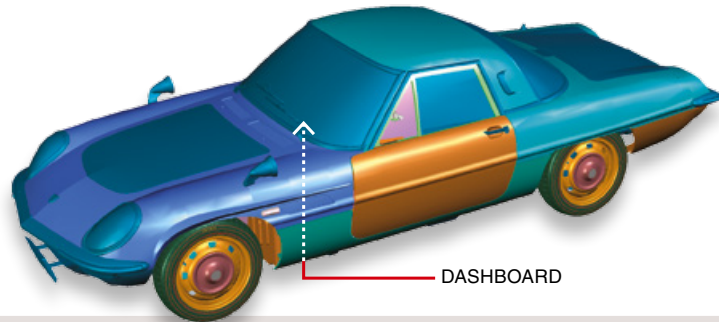


The next stage



71 THE DASHBOARD – 1

In this stage you will start assembling the dashboard of your 1:8 scale model of the Mazda Cosmo Sport.



TOOLS NEEDED

- Cross screwdriver no. 1

LIST OF PIECES



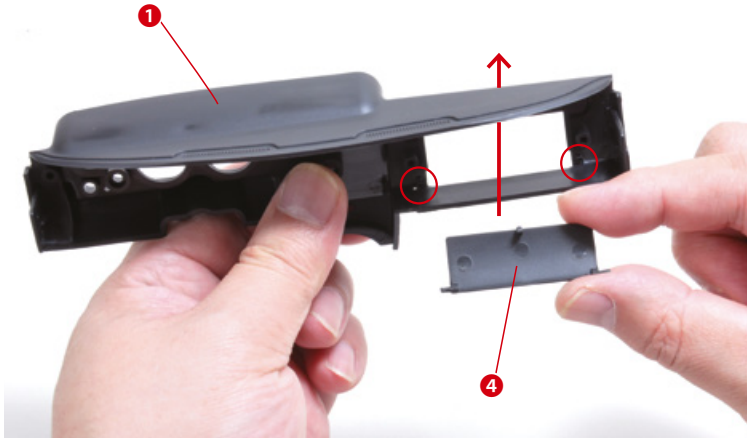
- 1 Dashboard
- 2 Detail
- 3 Glovebox
- 4 Glovebox cover
- 5 Handle
- 6 Screws (2.3 x 4mm) x3

COSMO SPORT

Step

1

The dashboard – 1



Attach the glovebox cover to the dashboard, positioning the pieces as shown in the photo.



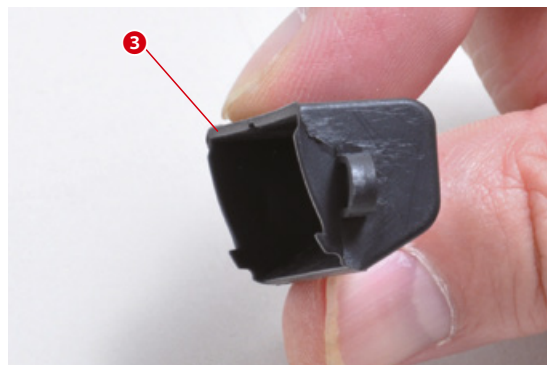


COSMO SPORT

Step

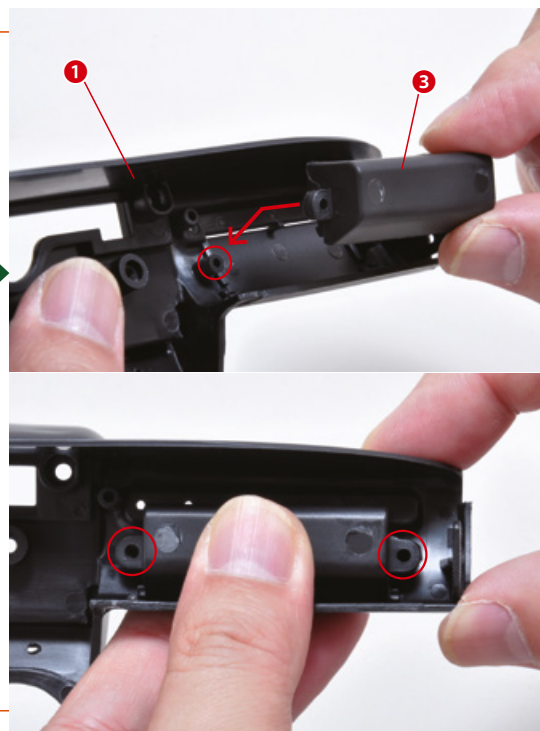
2

The dashboard – 2



You will now attach the glovebox to the dashboard.

Position the pieces as shown in the photo and attach the glovebox to the dashboard.



Secure the pieces with two of the screws received with this stage.

COSMO SPORT

Step

3

The dashboard – 3

Press the detail onto the dashboard, positioning the pieces as shown in the photo.



Finally, also attach the handle, as shown in the photo.

FINAL RESULT

You have started assembling the dashboard of your model.
Keep it in a safe place with the rest of the pieces.

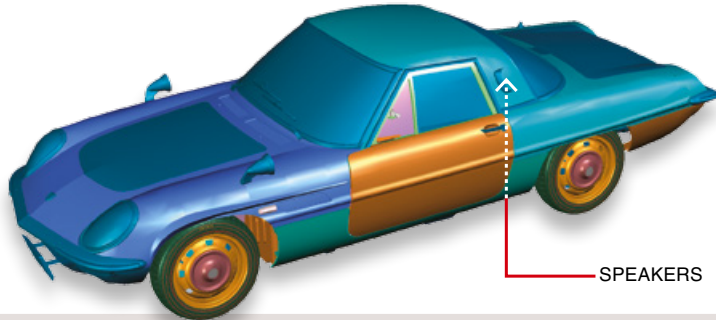


The next stage



72 THE SPEAKERS

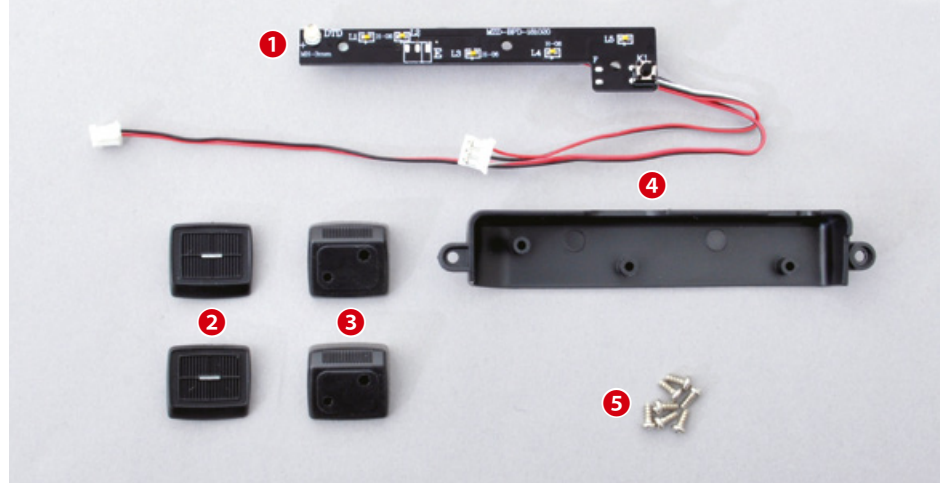
In this stage you will attach the speakers to the rear seats of your model, and start working on the circuit board with the LED lights that illuminate the dashboard.



TOOLS NEEDED

- Cross screwdriver no. 1

LIST OF PIECES

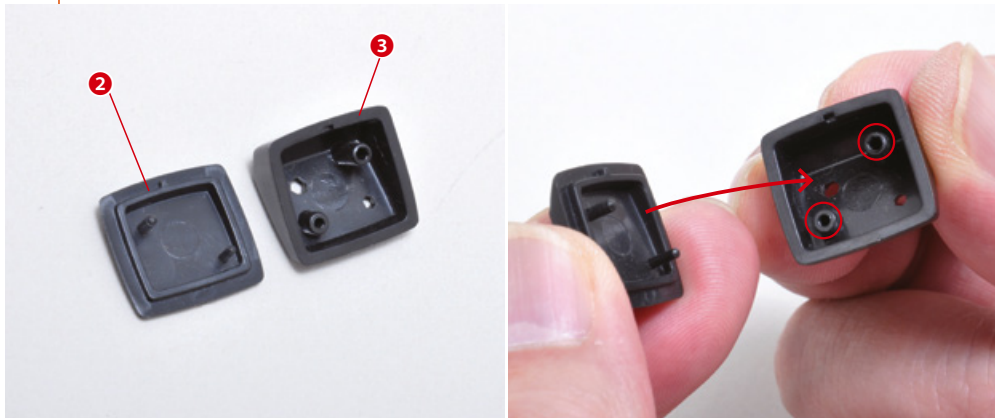


- 1 Circuit board
- 2 Speakers
- 3 Speaker mount brackets
- 4 Circuit board housing
- 5 Screws (2.3 x 4mm) x7

COSMO SPORT

Step

1 The speakers – 1



Attach the speakers to their mount brackets, positioning the pieces as shown in the photo.



Gently press the pieces until they click into place.



Both speakers are now ready.



COSMO SPORT

Step

2 The speakers – 2



Now attach the two speakers to the rear seats, positioning the pieces as shown in the photos on this page.

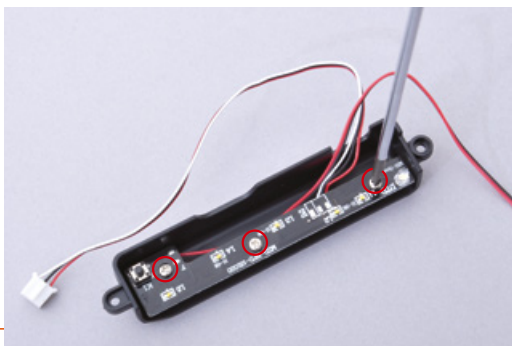
COSMO SPORT

Step

3 The circuit board



Place the circuit board in its housing, positioning the pieces as shown in the photo.



Secure the pieces with three of the screws you received with this stage.

FINAL RESULT

This is the result of this assembly session. Keep the pieces in a safe place until you need them.

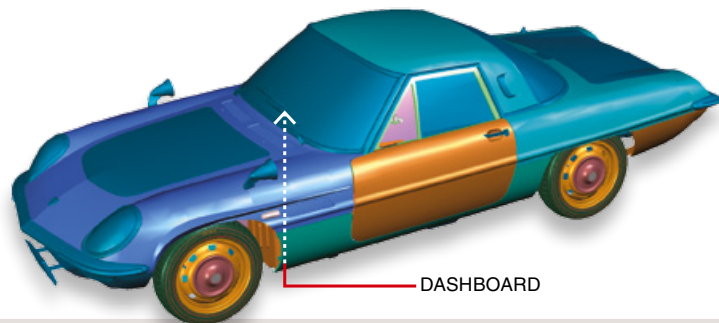


The next stage



73 THE DASHBOARD – 2

In this stage you will continue to work on the dashboard of your model, and will attach various components to the platform. Follow our instructions and explanatory photographs carefully.



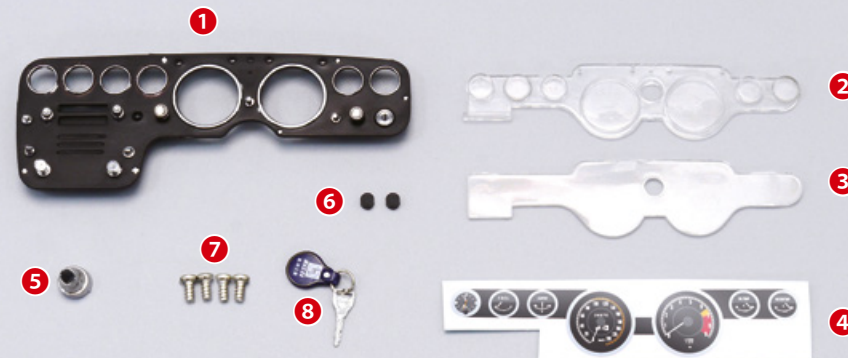
TOOLS NEEDED

- Cross screwdriver no. 1
- Cottonwool
- Tweezers
- Water

RECOMMENDED TOOLS

- Water-based paint (red, blue and green)

LIST OF PIECES

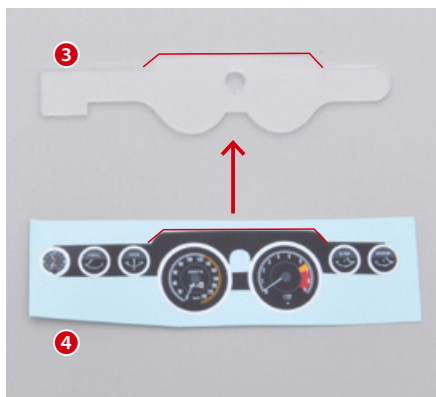


- 1 Instrument cluster
- 2 Glass cover
- 3 Instrument cluster backing
- 4 Stickers
- 5 Instrument cluster lightbulb
- 6 Spacers
- 7 Screws (2.3 x 4mm) x4
- 8 Ignition key

COSMO SPORT

Step

1 The sticker with the instruments



In this stage you will attach the sticker with the instruments to the backing. Use the photo above to help you align the pieces correctly.



First of all, immerse the sticker in a container filled with water.



Use a piece of cottonwool (or a cotton bud) to help you separate the sticker from its backing.



Now attach the sticker to the instrument cluster backing and wait for it to dry.

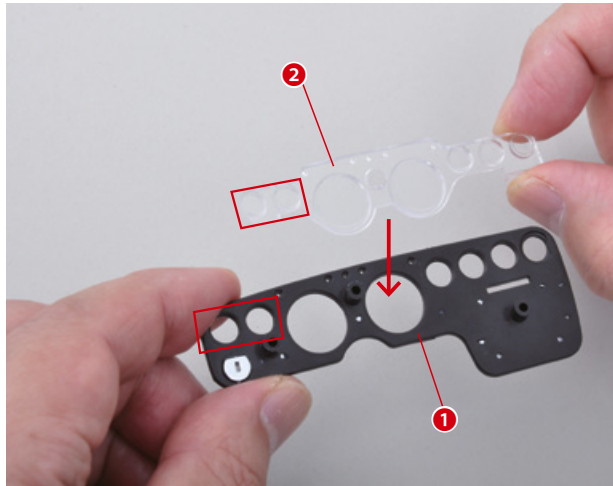


COSMO SPORT

Step

2

The instrument cluster – 1



Cover the instrument cluster with the glass, positioning the pieces as shown in the photo.



Make sure you have joined the two components together correctly.



A SUGGESTION



If you want to add a realistic touch to your model, you can paint the small linchpins on the glass with water-based paints, as shown in the photo above.

COSMO SPORT

Step

3

The instrument cluster – 2



Attach the backing with the sticker of the instrument cluster to the glass, positioning the pieces as shown in the photo.



The linchpin on the instrument cluster should stick out of the backing.



Attach the lightbulb to the instrument cluster, positioning the pieces as shown in the photo.





COSMO SPORT

Step

4

The instrument cluster – 3



Attach the dashboard to the instrument cluster, positioning the pieces as shown in the photo.



Insert and tighten three of the screws you received with this stage in the circled holes.

Make sure you have attached the pieces correctly before securing them with the screws.

COSMO SPORT

Step

5

The instrument cluster – 4



Arrange the wiring of the circuit board that you assembled in stage 73, as shown in the photo.



Attach the circuit board housing to the dashboard, positioning the pieces as shown in the photo.



Be careful not to damage the wiring while handling the components.



COSMO SPORT

Step

6

The ignition key



Your model's ignition key is also the switch for the effects. Attach it to the dashboard, as shown in the photo.

Secure the circuit board housing to the dashboard with two of the screws you received with stage 72.



▶ If you hear the "click"

▶ If you don't hear the "click"



Press gently until you hear the switch "click".



Temporarily remove the circuit board and insert a spacer into the circled hole.



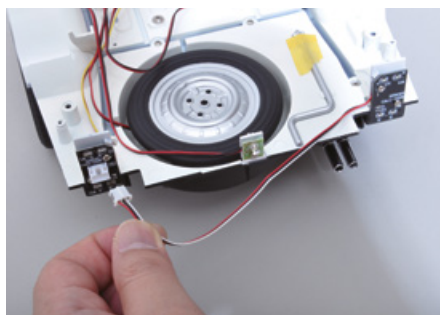
Reposition the circuit board and press the ignition key to test it again.

COSMO SPORT

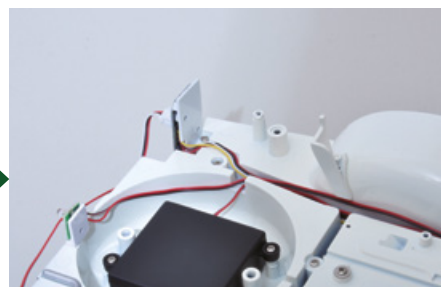
Step

7

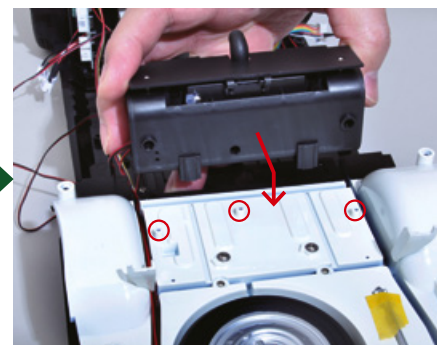
The wiring – 1



Insert the plug on the rear right light into the socket in the rear left light, as shown in the photo.



Arrange the various wires on the rear section of your model as shown (the spare tyre has been removed in this photo to provide a clearer view).



Attach the battery holder case to your model, positioning the pieces as shown in the photo.

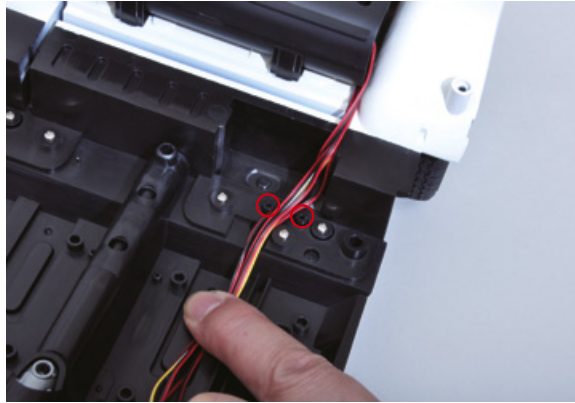


Open the panel and pull out the battery holder, as shown in the photo. Put the wire of the battery holder together with the other wires.

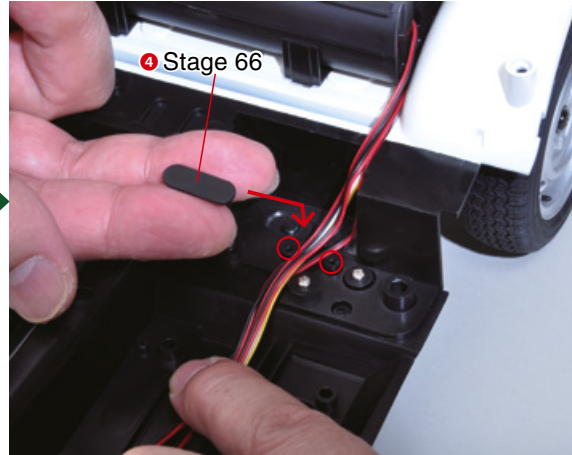


COSMO SPORT

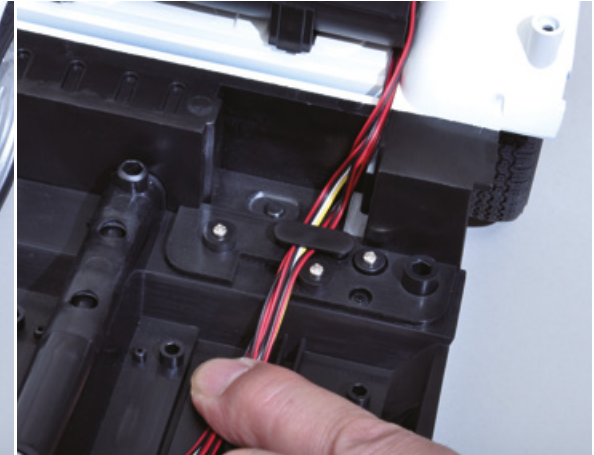
Step 8 The wiring – 2



Arrange the various wires on the rear section of your model as shown in the photo. Pass them between the two linchpins circled in the photo.

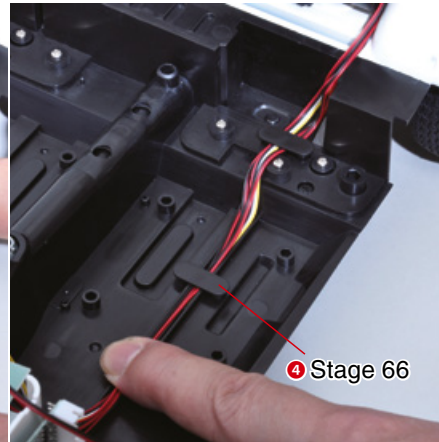
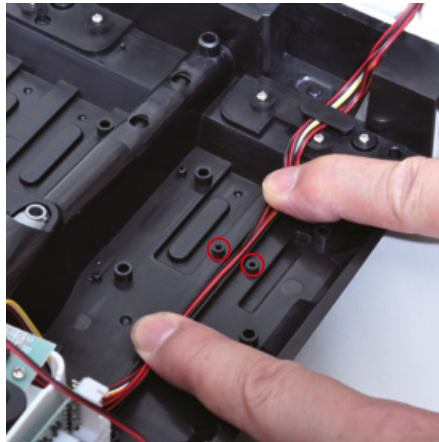


Position one of the wire grommets you received with stage 66 as shown in the photo, so as to keep all the wires together.

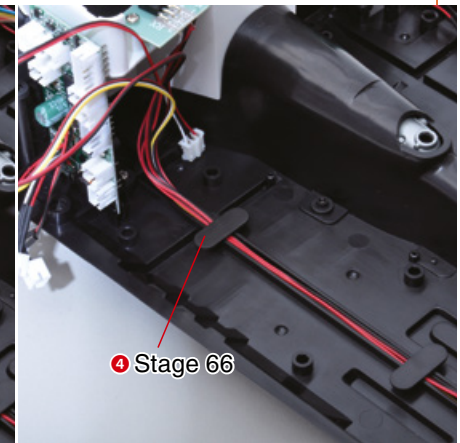
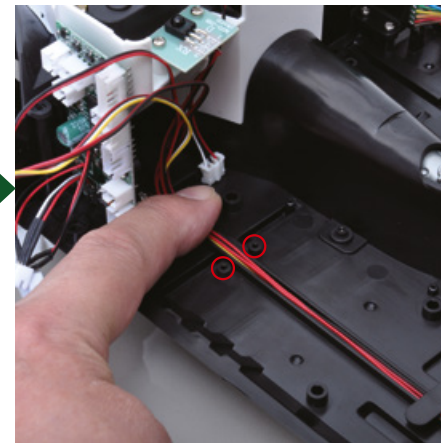


COSMO SPORT

Step 9 The wiring – 3



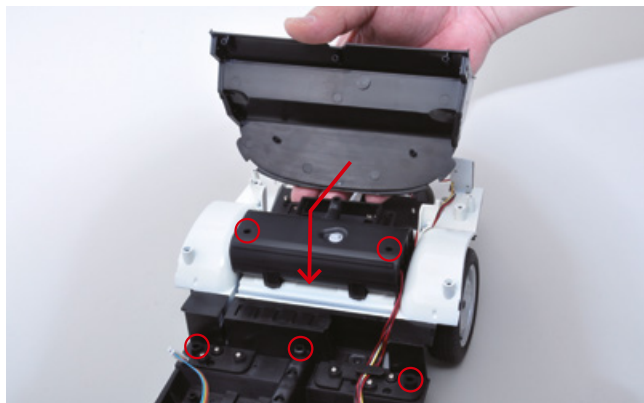
Continue arranging the wiring as shown in the photos on this page. Position the other two wire grommets received with stage 66 as shown in the photo, so as to keep all the wires together.



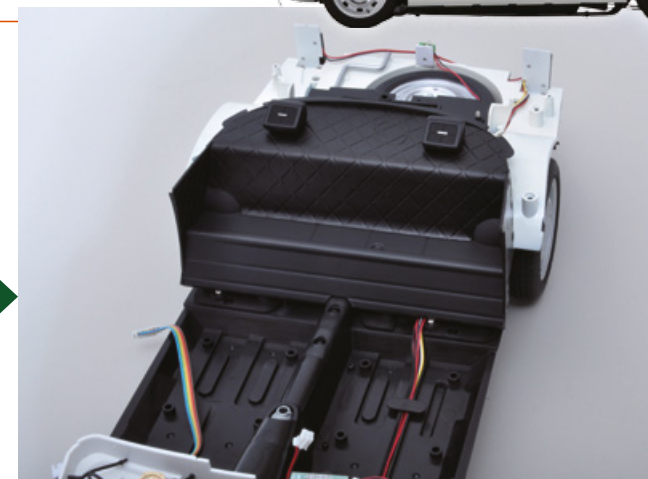


COSMO SPORT

Step 10 The rear seats

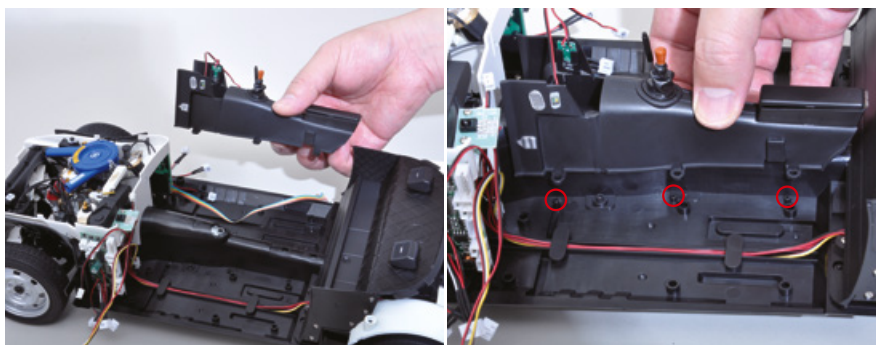


Attach the rear seats to your model, positioning the pieces as shown in the photo.

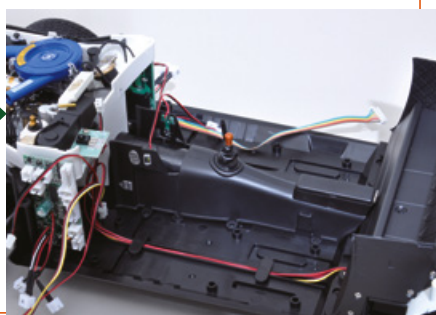


COSMO SPORT

Step 11 The gearbox



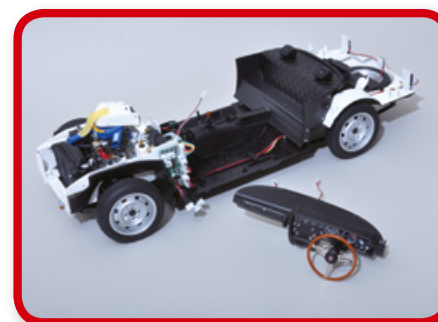
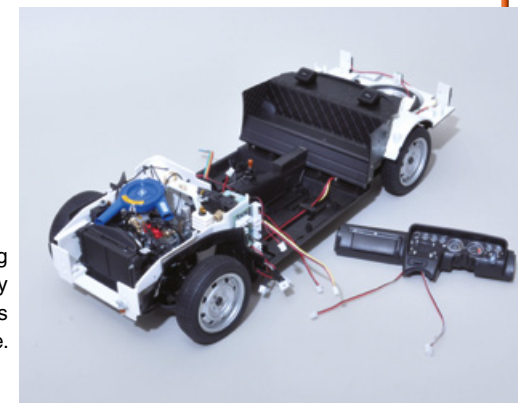
Attach the gearbox to the platform, positioning the pieces as shown in the photo.



This is the gearbox attached correctly. Don't worry if the components are not attached securely; you will secure them permanently in the next few stages.

FINAL RESULT

This is the result of this long and satisfying assembly session. Keep all the pieces in a safe place.

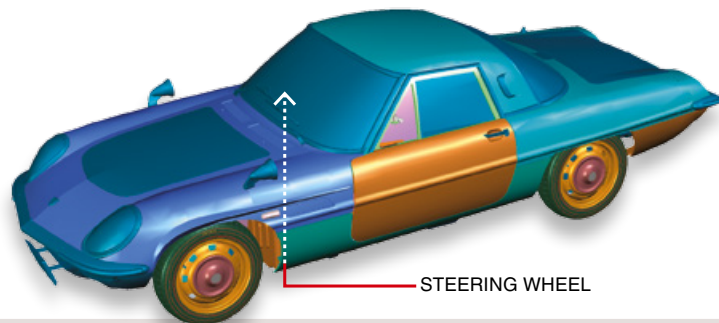


The next stage



74 THE STEERING WHEEL

In this stage you will assemble your model's steering wheel and attach it to the dashboard. You will then begin to connect some wiring to the control unit.



TOOLS NEEDED

- Cross screwdriver no. 1
- Adhesive tape

RECOMMENDED TOOLS

- Tweezers

LIST OF PIECES



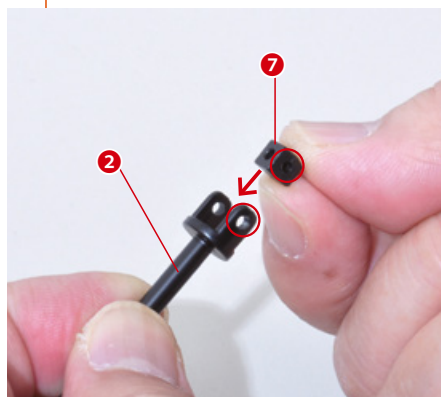
- | | |
|------------------------|---------------------------|
| 1 Steering wheel | 7 Coupler |
| 2 Steering column | 8 Bracket |
| 3 Horn button | 9 Screws A (2.3 x 4mm) x9 |
| 4 Column mount bracket | 10 Screws B (2 x 5mm) x2 |
| 5 Lever | |
| 6 Gearwheel | |

COSMO SPORT

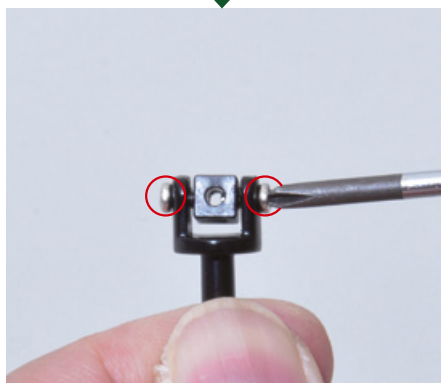
Step

1

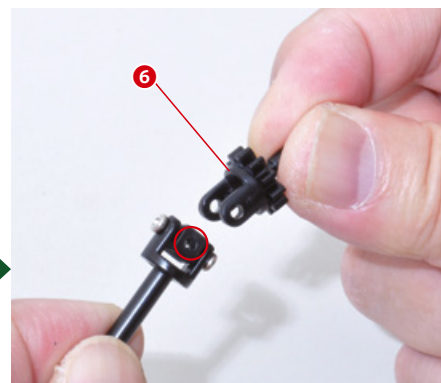
The steering wheel – 1



Attach the coupler to the steering column, positioning the pieces as shown in the photo.



Secure the pieces with two type A screws.



Attach the gearwheel to the coupler on the steering column.

Try and turn the gearwheel on the coupler. If it is too tight, you can loosen the screws slightly to adjust the movement.



Insert and tighten two type A screws in the circled holes to secure the pieces.



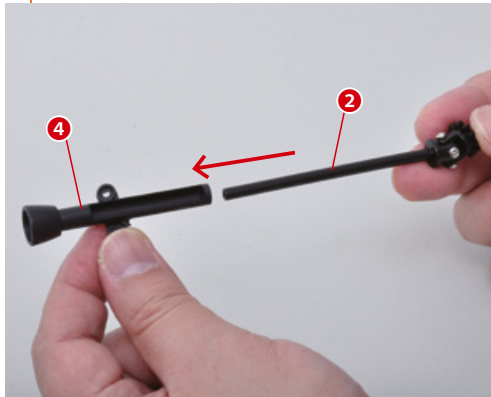


COSMO SPORT

Step

2

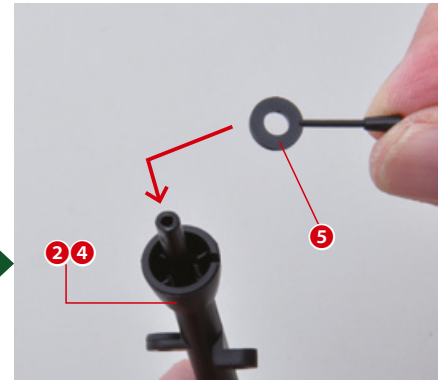
The steering wheel – 2



Insert the steering column into the steering column mount bracket, positioning the pieces as shown in the photo.



Now place the lever on your work surface.



Attach the lever to the completed steering column, positioning the pieces as shown in the photo.



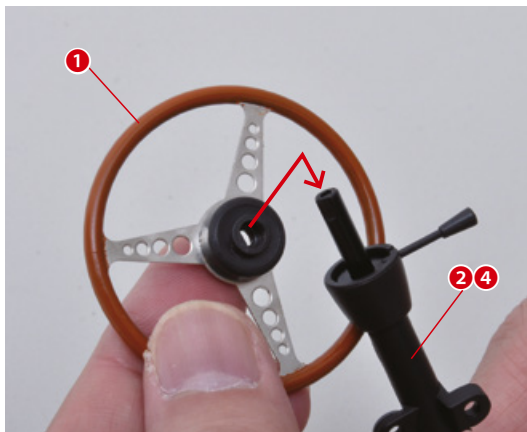
Insert the lever into the groove in the mount bracket.

COSMO SPORT

Step

3

The steering wheel – 3



Attach the steering wheel to the steering column.



Insert and tighten a type B screw in the circled hole to secure the pieces.



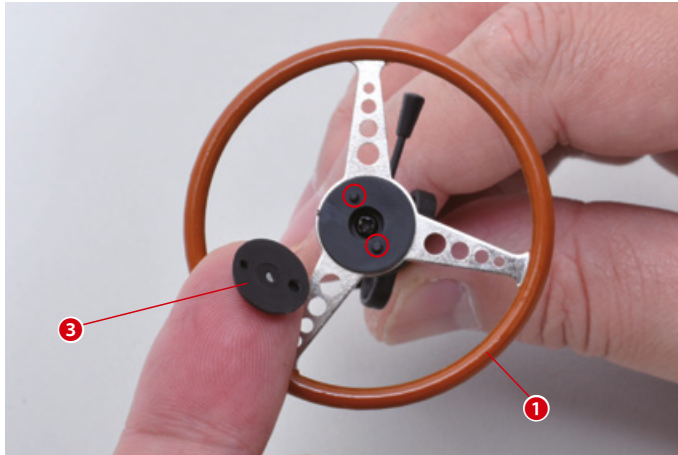


COSMO SPORT

Step

4

The steering wheel – 4



Attach the horn button to the steering wheel, pressing the piece gently into place.

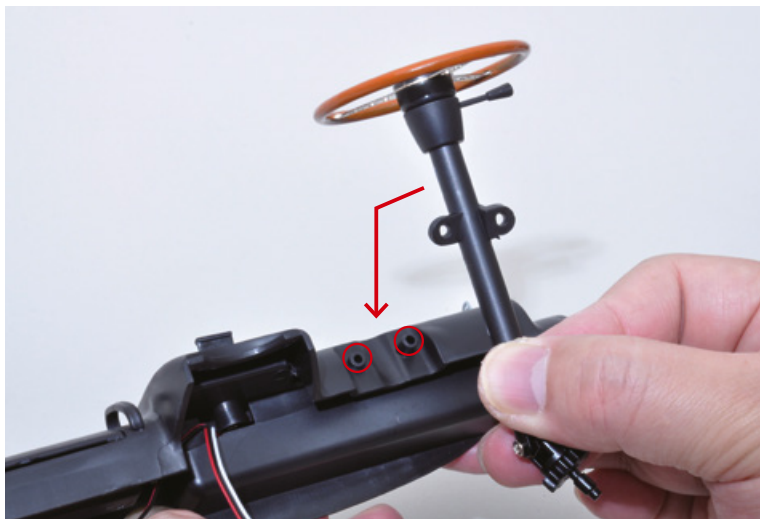


COSMO SPORT

Step

5

The steering wheel – 5



Attach the steering wheel to the dashboard, positioning the pieces as shown in the photo.

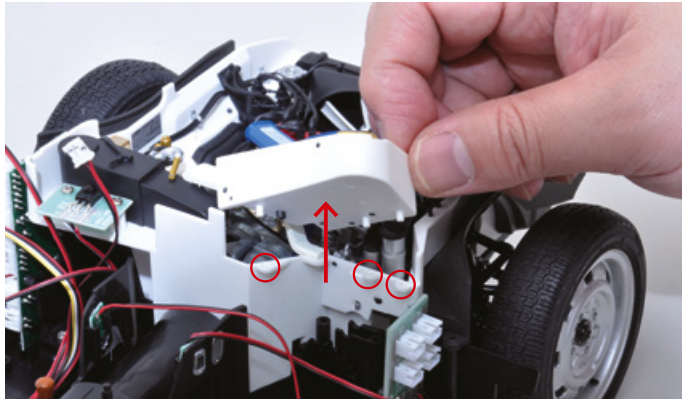


Secure all the pieces with two type A screws.

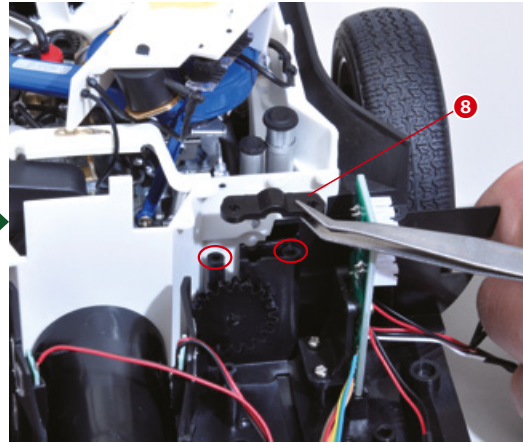


COSMO SPORT

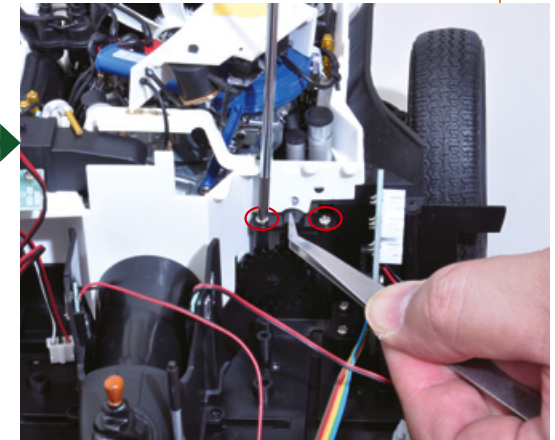
Step 6 The bracket



Temporarily remove the fuse box mount bracket, being careful not to detach any of the wires. We recommend that you attach it to the engine with a strip of adhesive tape so you don't lose it.



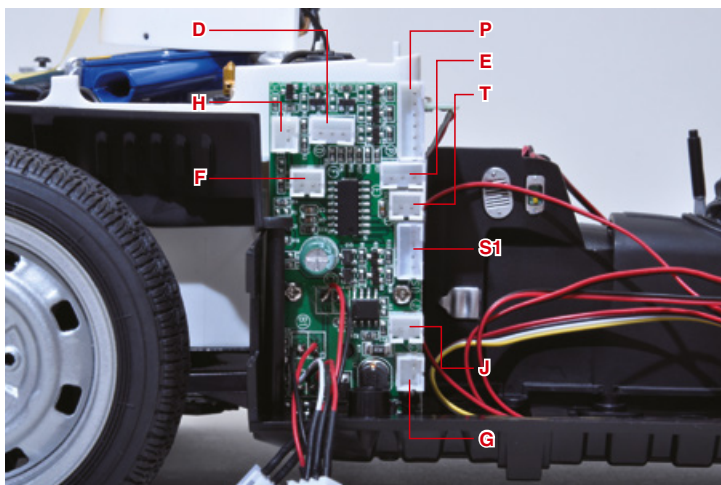
Position the bracket as shown, and place it on the linchpins circled in the photo.



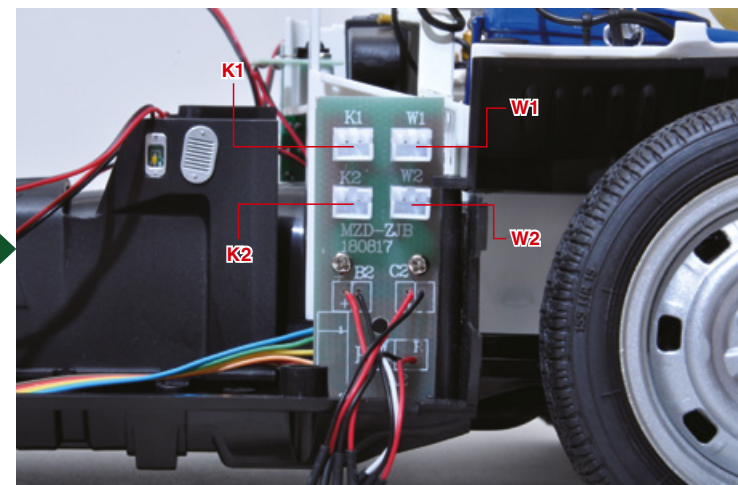
Secure the bracket to the linchpins with two type A screws. Don't tighten them completely.

COSMO SPORT

Step 7 The wiring – 1



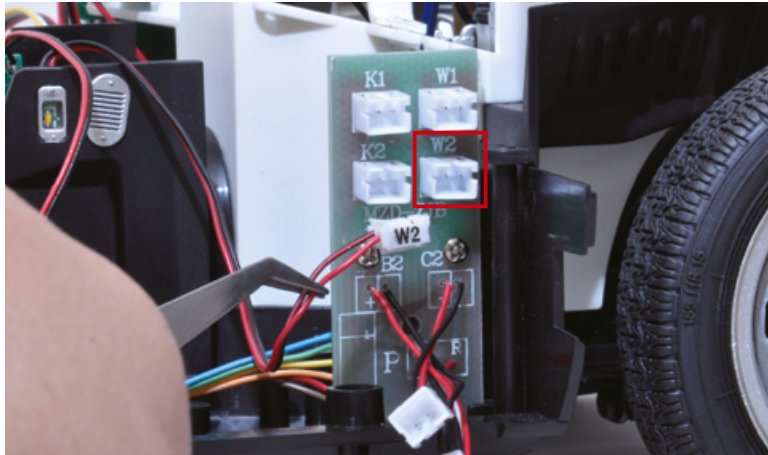
Look carefully at the photos on this page to identify the sockets in the control unit and secondary circuit board.



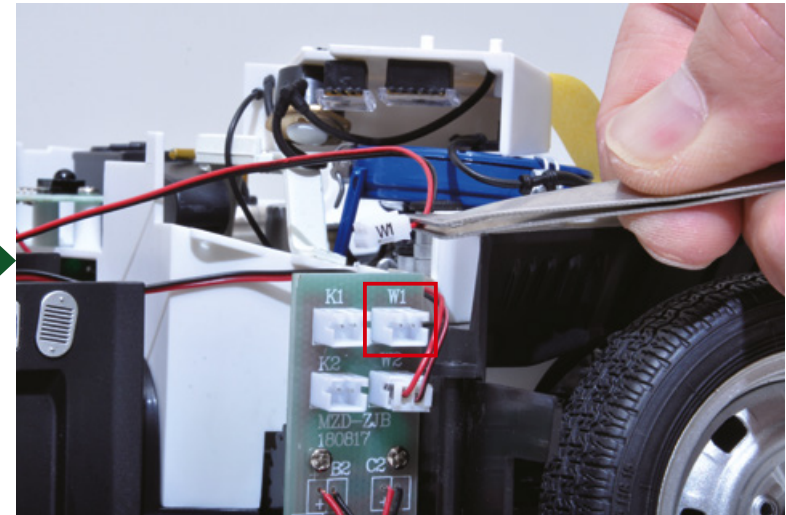


COSMO SPORT

Step 8 The wiring – 2



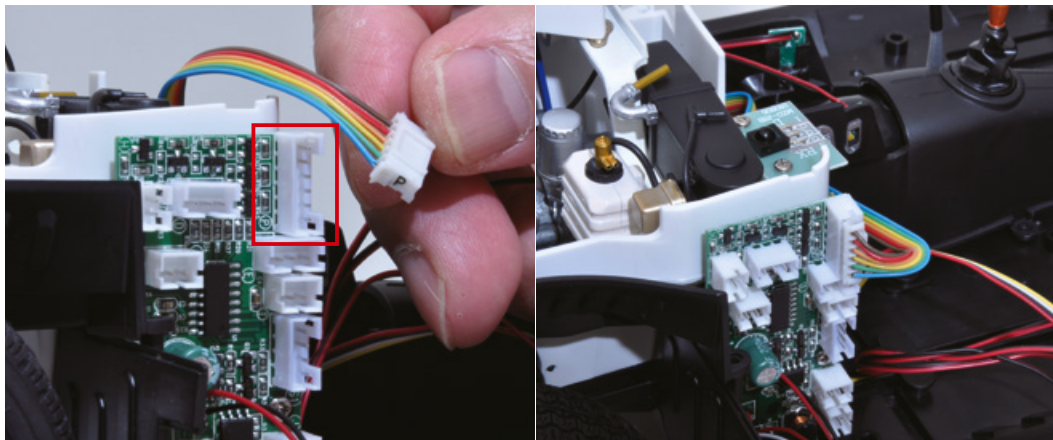
Insert the plug marked "W2" into the corresponding socket in the secondary circuit board.



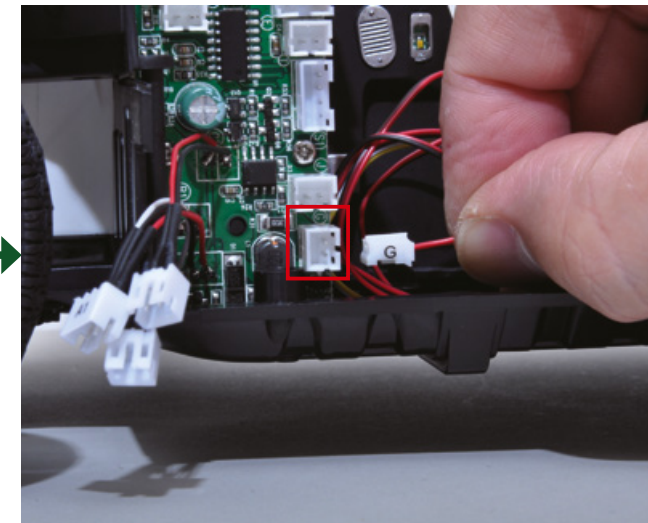
Insert plug W1 into the corresponding socket in the secondary circuit board.

COSMO SPORT

Step 9 The wiring – 3



Insert plug P into the corresponding socket in the control unit, as shown in the photo.

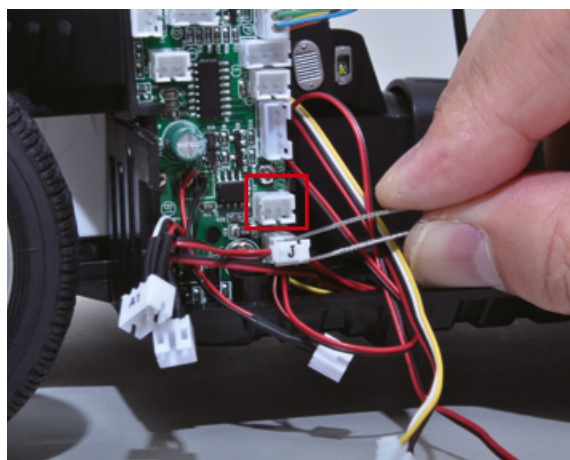


Insert plug G into the corresponding socket in the control unit.

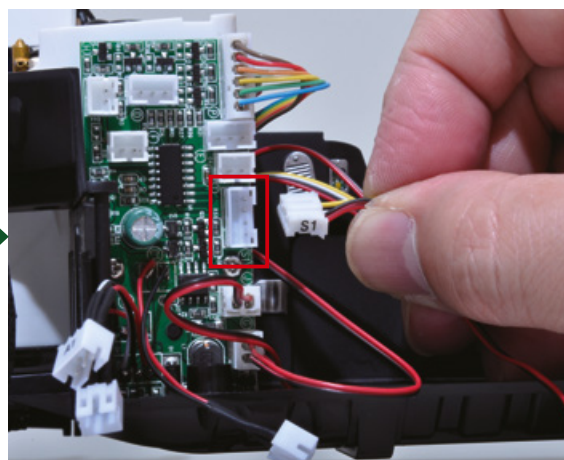


COSMO SPORT

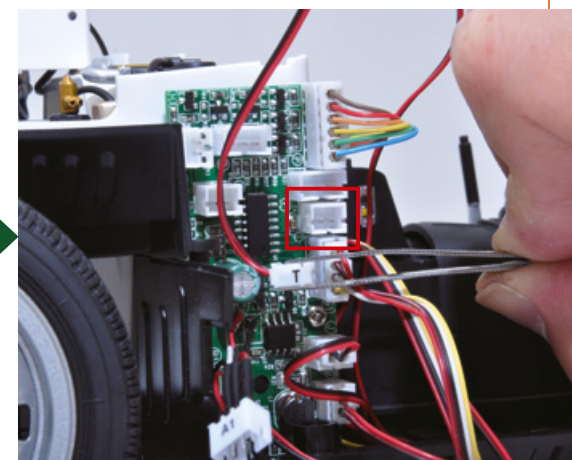
Step 10 The wiring – 4



Insert plug J into the corresponding socket in the control unit.



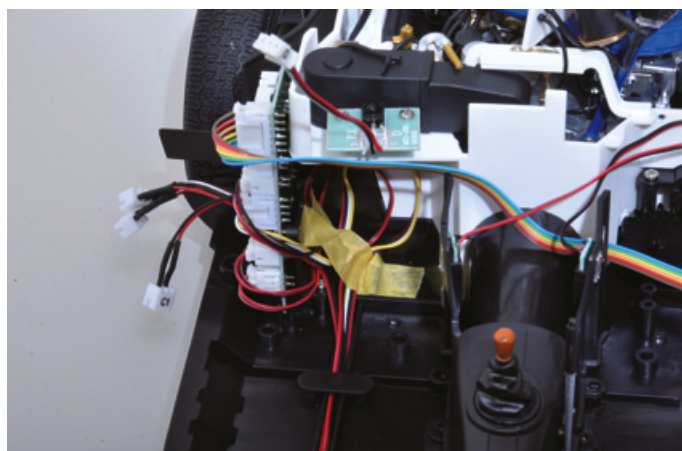
Insert plug S1 into the corresponding socket in the control unit.



Insert plug T into the corresponding socket in the control unit.

COSMO SPORT

Step 11 The wiring – 5



Look carefully at the photo and then secure the wires of the plugs you connected to the control unit with a strip of adhesive tape, with the exception of the wire on plug P.

FINAL RESULT

This is what your model looks like at the end of this assembly session.
As always, keep the pieces in a safe place.

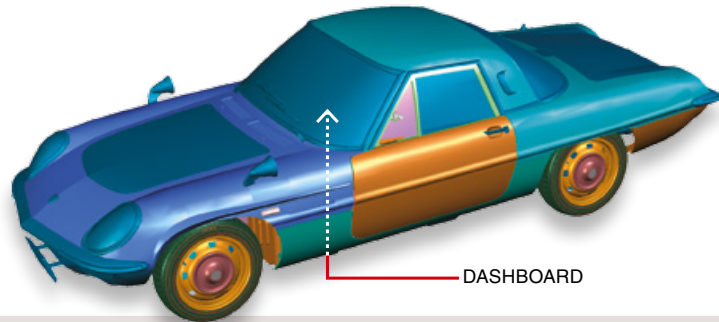


The next stage



75 THE REMOTE CONTROL

In this stage you will attach the dashboard to your model and continue to work on the wiring. Thanks to the remote control you received, you will be able to carry out the first test on your model's special effects.



TOOLS NEEDED

- Cross screwdriver no. 1
- LR44 batteries x3
- AAA batteries x2

RECOMMENDED TOOLS

- Tweezers

LIST OF PIECES



2



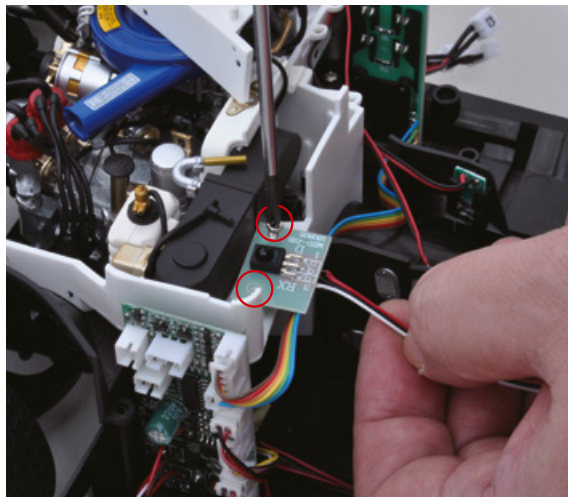
- 1 Remote control
- 2 Screws (2.3 x 4mm) x5

COSMO SPORT

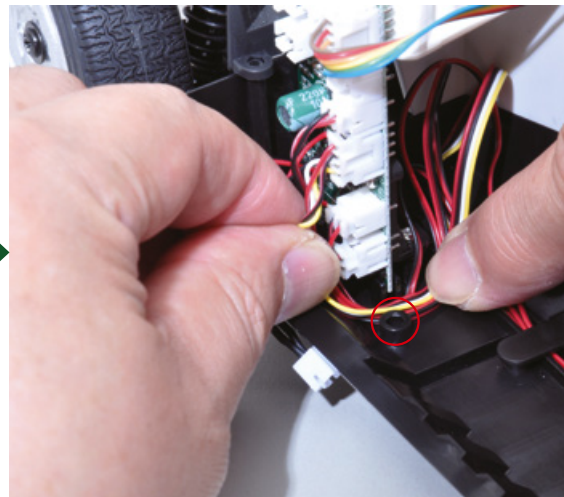
Step

1

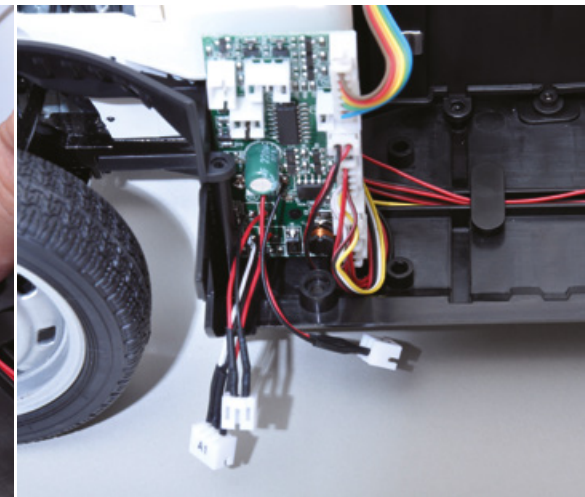
The platform – 1



Temporarily remove the two screws and the circuit board, as shown in the photo.



Arrange the input wiring of the control unit between the control unit and the linchpin circled in the photo.



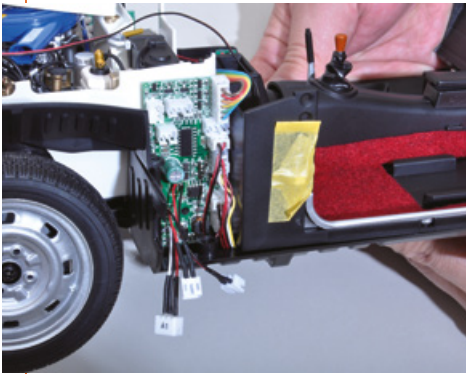


COSMO SPORT

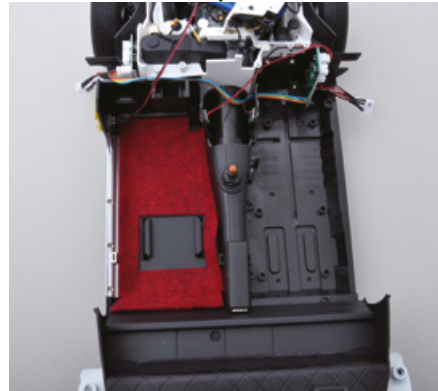
Step

2

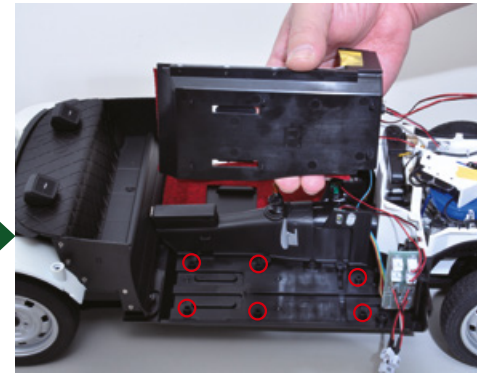
The platform – 2



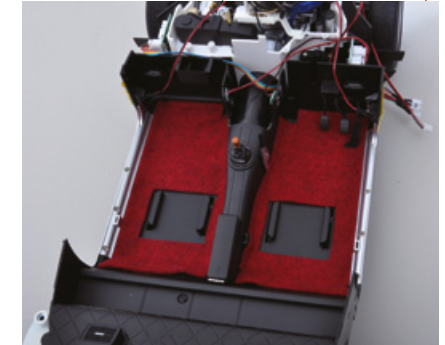
Get the left side of the platform (the side with the passenger seat) and attach it to the model, positioning the pieces as shown in the photo. Be careful not to damage the wiring.



The first part of the platform installed correctly.



Install the right side of the platform (the side with the driver's seat) in the same way.



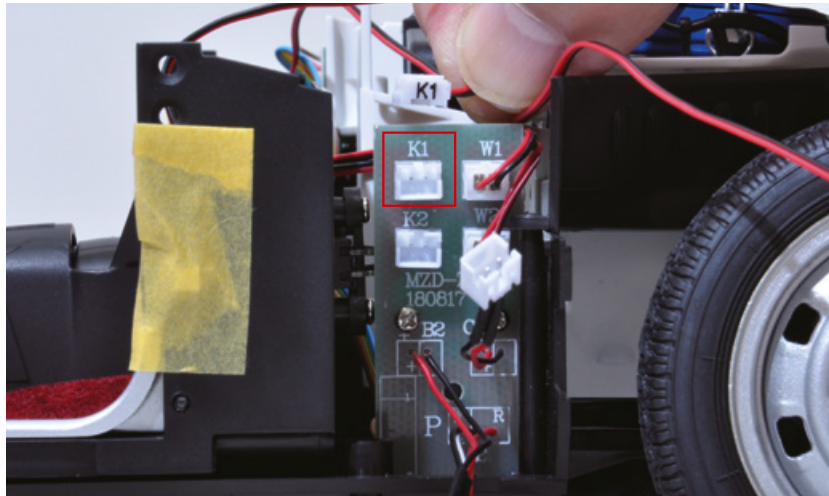
Both sides of the platform have now been installed correctly. Consequently, you have also secured the gearbox in place.

COSMO SPORT

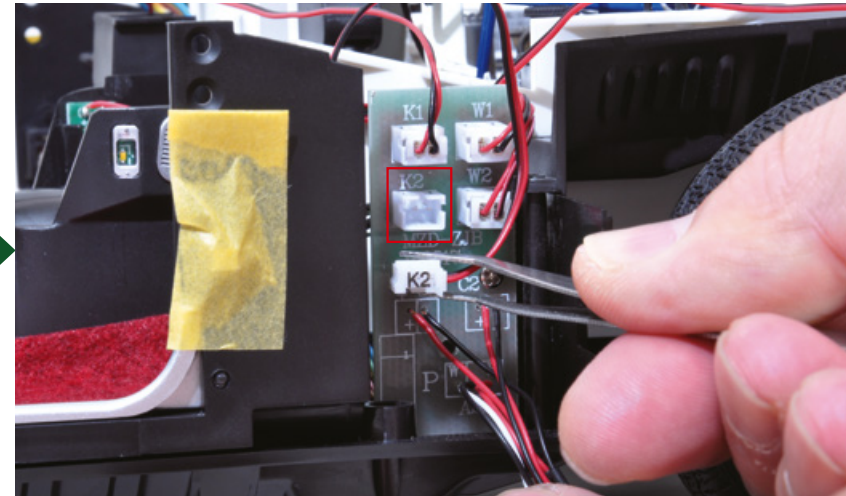
Step

3

The wiring – 1



Insert plug K1 into the corresponding socket in the secondary circuit board.

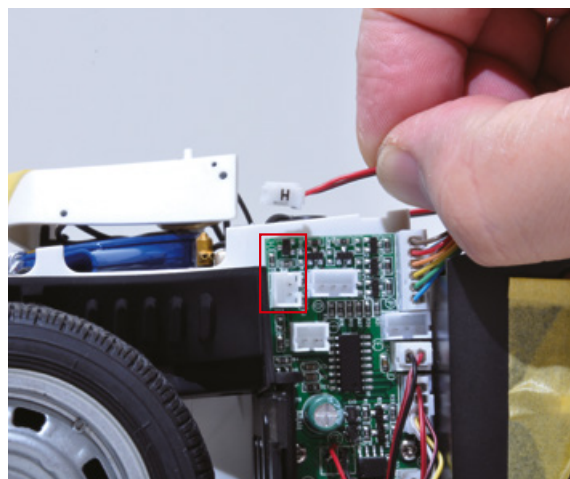


Insert plug K2 into the corresponding socket in the secondary circuit board.

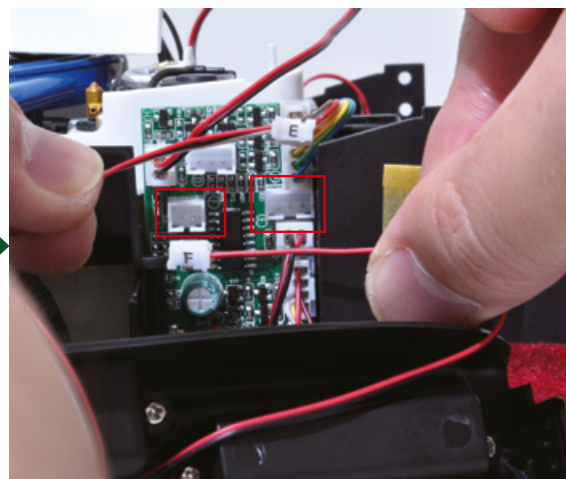


COSMO SPORT

Step 4 The wiring – 2



Insert plug H into the corresponding socket in the control unit.



Now insert plugs F and E into the corresponding sockets in the control unit. Use the photo on page 181 (stage 74) to help you identify the two sockets.

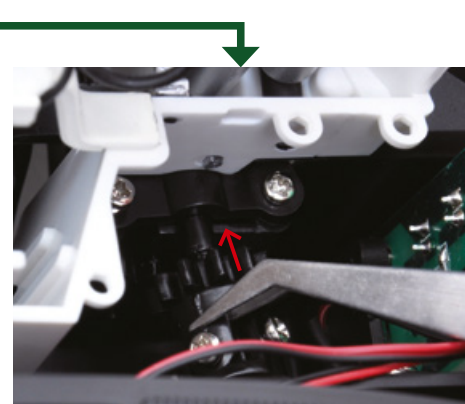


COSMO SPORT

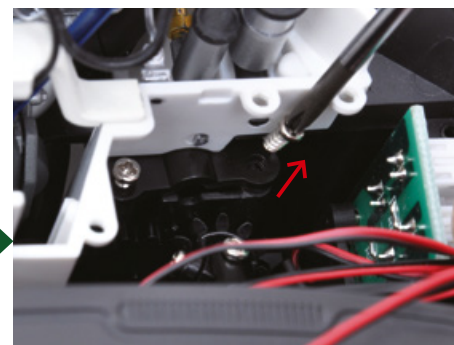
Step 5 The dashboard – 1



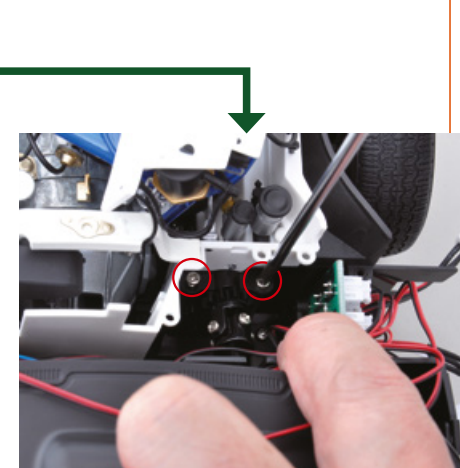
Turn the front tyres until they are straight, if they are not so already. Attach the dashboard to the model, positioning the pieces as shown and being careful not to damage the components.



Insert the tip of the steering column gearwheel into the bracket you installed in stage 74. The steering column and steering system gearwheels are now touching each other: turn them to adjust the direction of the wheels and steering wheel.



If you have difficulty inserting the tip gearwheel, temporarily remove the screw circled in the photo.



Once you have completed the operations in this step, tighten the two screws circled in the photo.

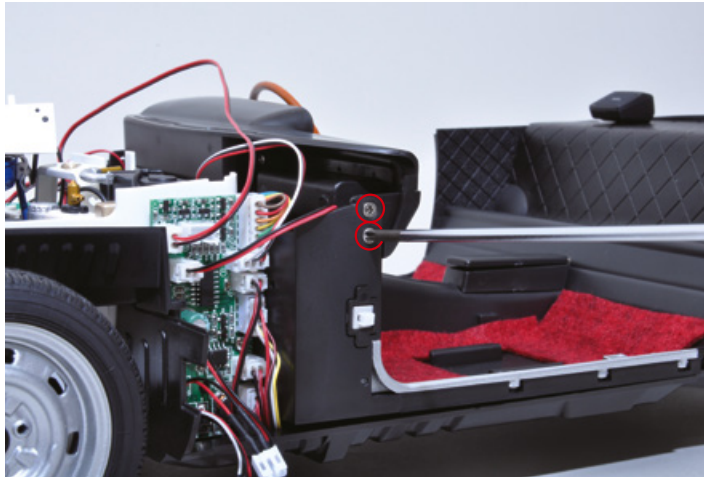


COSMO SPORT

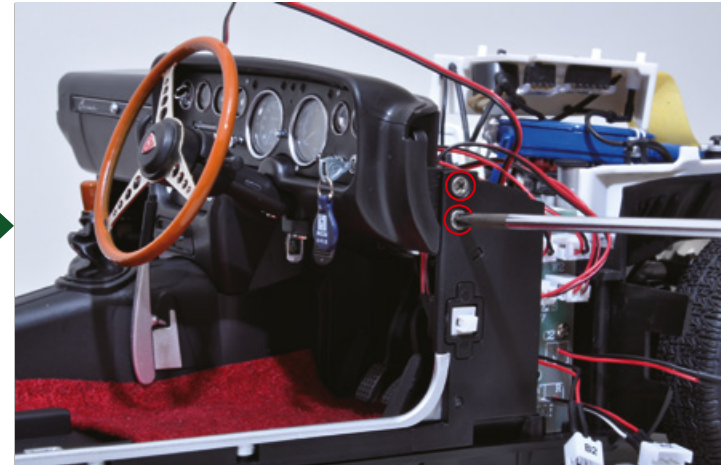
Step

6

The dashboard – 2



Secure the dashboard to the left side of the platform with two of the screws you received with this stage. Remove the tape covering the door switch.



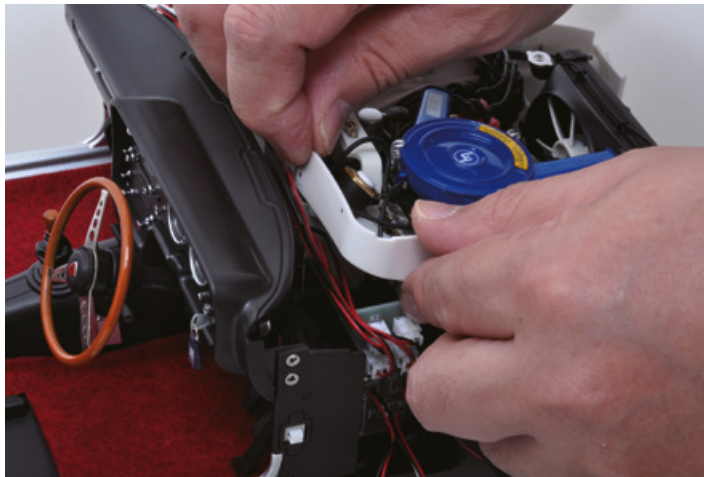
Now secure the dashboard to the right side of the platform with two more of the screws you received with this stage. Remove the tape covering the switch.

COSMO SPORT

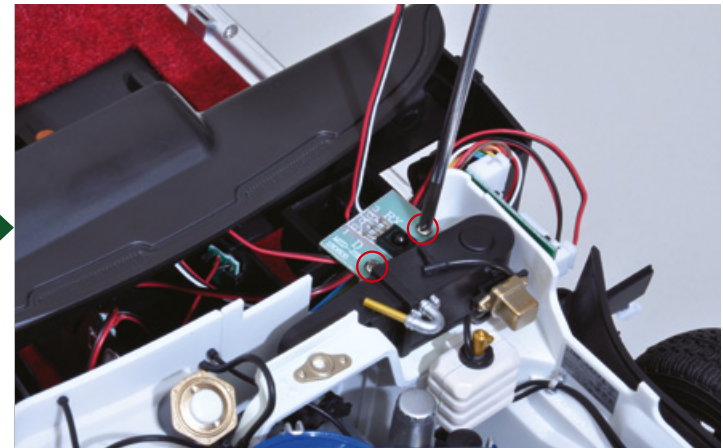
Step

7

The dashboard – 3



You can now reattach the fuse box holder you temporarily removed in stage 74.

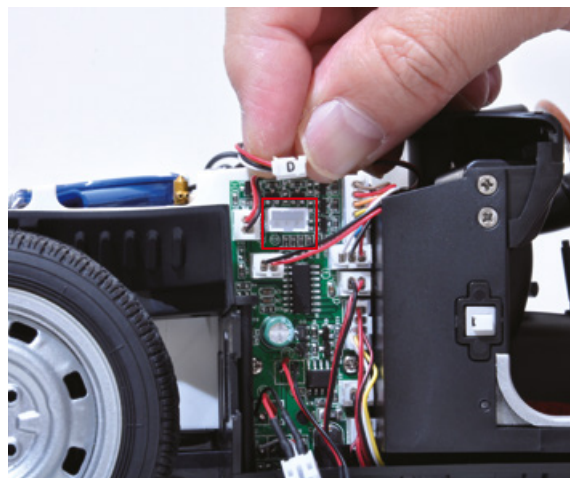


Also reattach the circuit board you temporarily removed at the beginning of this stage, as shown in the photo. Use the two screws you removed to secure it in place.

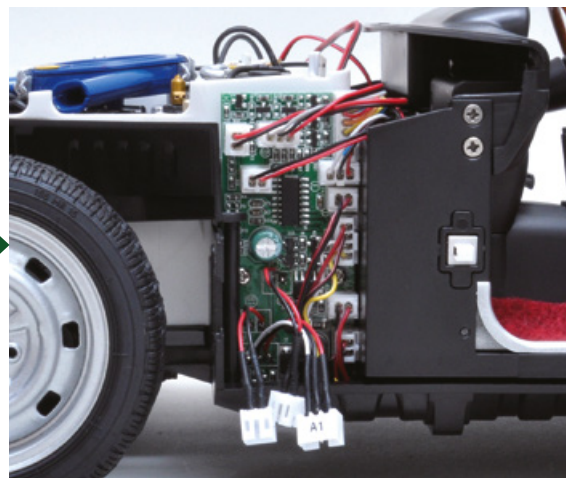


COSMO SPORT

Step 8 The wiring – 3



Insert plug D into the corresponding socket in the control unit.

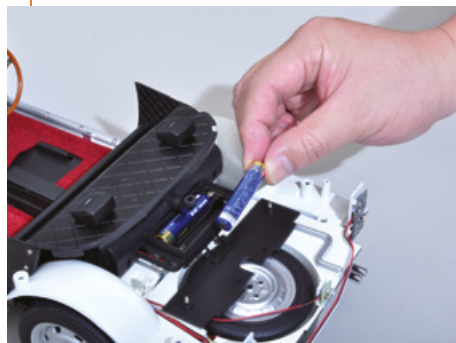


All the plugs have been connected to the control unit. Now you can test the effects of your model.



COSMO SPORT

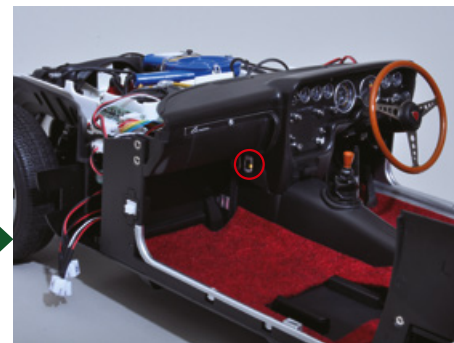
Step 9 Testing the effects – 1



Insert two AAA batteries into the battery holder, as shown in the photo. Make sure that the poles of the batteries are in the correct position.



Press lightly on the ignition key to activate the switch for the effects. Press once for ON and press again for OFF.



When you turn the power on, you can hear the sound of the engine starting and the noise it makes when it's in idle. If the batteries are inserted correctly, both courtesy lights on the platform remain on, regardless of whether the power is ON or OFF.



The courtesy lights turn off when the door switches are pressed. When your model is finished, the courtesy lights will turn on when you open the doors and will remain off as long as the doors are closed.



COSMO SPORT

Step 10 Testing the effects – 2



Insert three LR44 button batteries into the remote control, ensuring that the poles are positioned correctly.



Press the power button on the remote.



*the headlights and front indicators haven't been installed yet.

This photo shows the functions of each button on your model's remote control.

COSMO SPORT

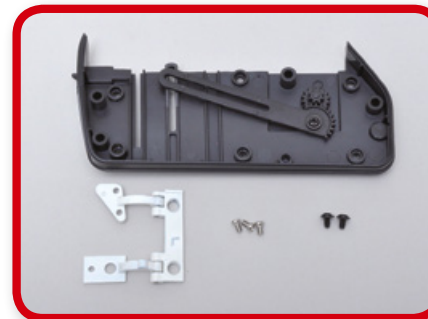
Step 11 Testing the effects – 3



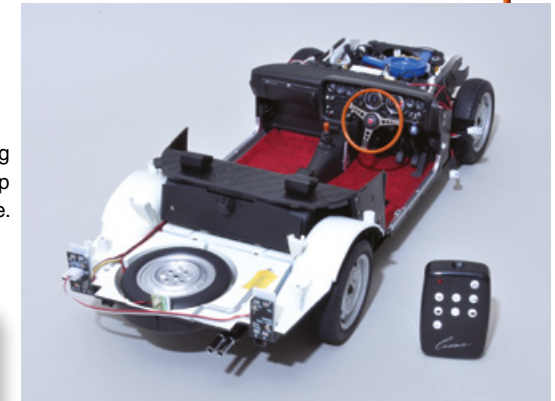
Press each button to check that your model's effects are working (the front lights will be checked once installed). After testing them, remove the batteries from your model and the remote control so as not to drain them.

FINAL RESULT

This is the result of this satisfying assembly session. As always, keep all the pieces in a safe place.



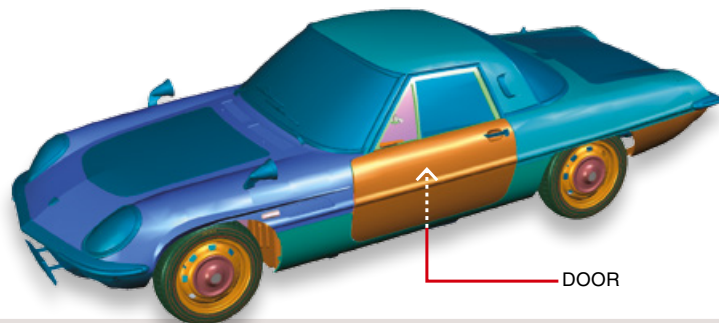
The next stage





76 THE LEFT DOOR – 1

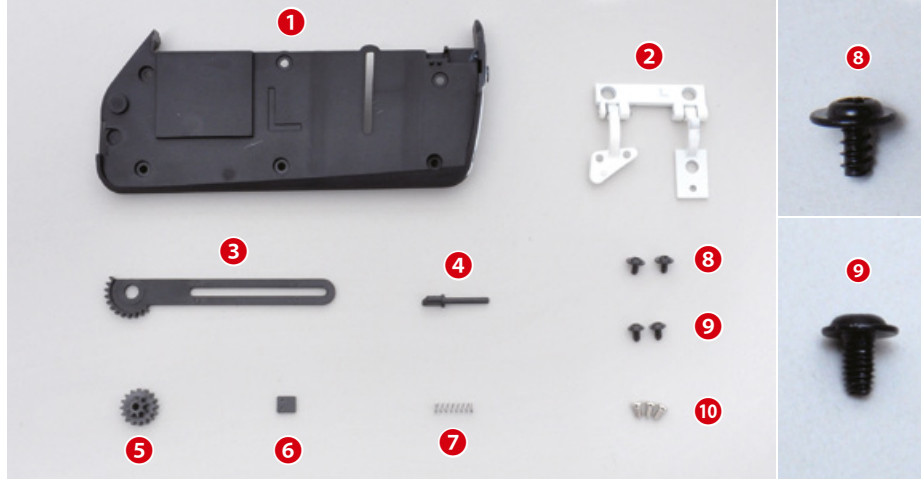
In this stage you will start working on the left door of your 1:8 scale model of the Mazda Cosmo Sport.



TOOLS NEEDED

- Cross screwdriver no. 1
- Flat file
- Modelling glue
- Round file

LIST OF PIECES

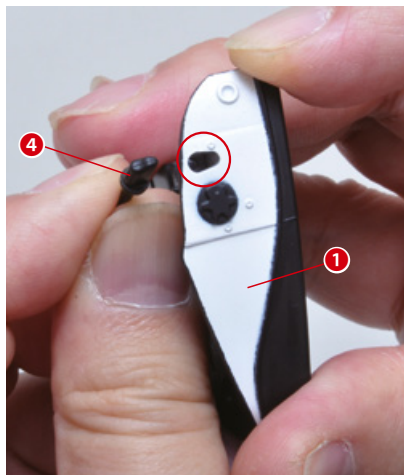


- | | |
|---------------|----------------------------|
| 1 Inner panel | 7 Spring |
| 2 Hinge | 8 Screws A (2.3 x 4mm) x2 |
| 3 Gearwheel 1 | 9 Screws B (2.3 x 4mm) x2 |
| 4 Door detail | 10 Screws C (2.3 x 4mm) x3 |
| 5 Gearwheel 2 | |
| 6 Bracket | |

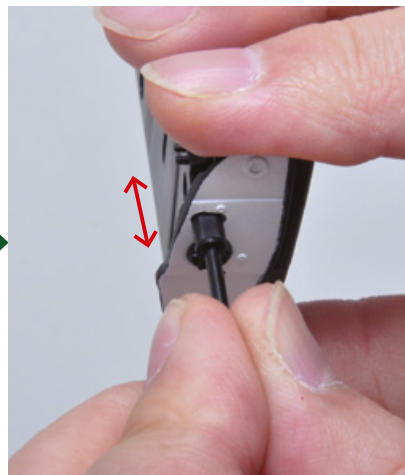
COSMO SPORT

Step

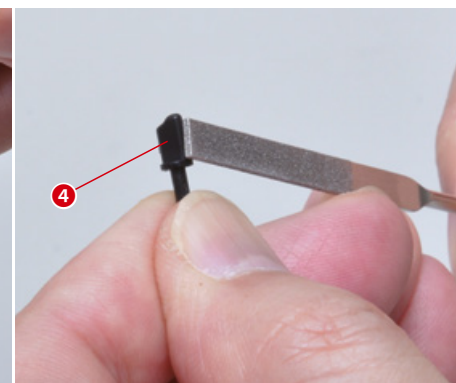
1 The left door – 1



Insert the detail into the hole in the inner panel, as shown in the photo.



Make sure the detail inserts easily.

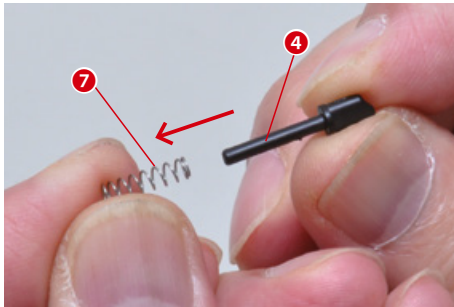


If you have any difficulty attaching the pieces, file them as shown in the photo. Remove the detail for now.

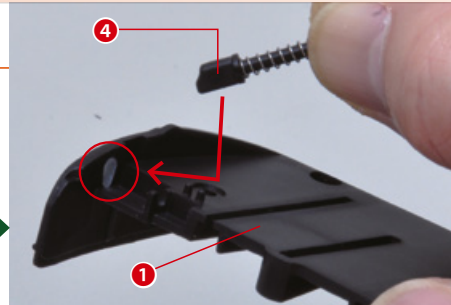


COSMO SPORT

Step **2** The left door – 2



Now insert the detail into the spring.



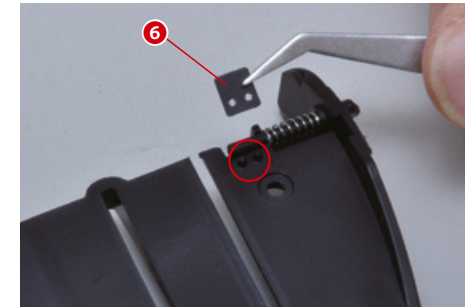
Attach the detail to the panel, positioning the pieces as shown in the photo.



Join the pieces together as shown in the photo.

COSMO SPORT

Step **3** The left door – 3



Now attach the bracket to the inner panel.

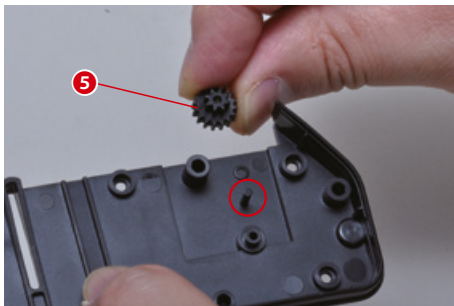


Secure the pieces with a drop of glue.

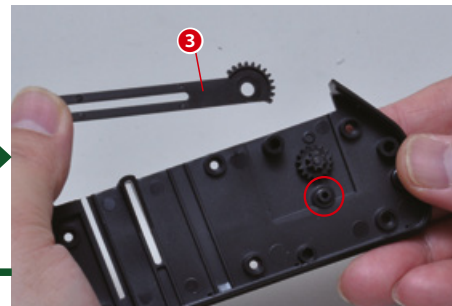


COSMO SPORT

Step **4** The left door – 4



Attach gearwheel 2 to the inner panel.



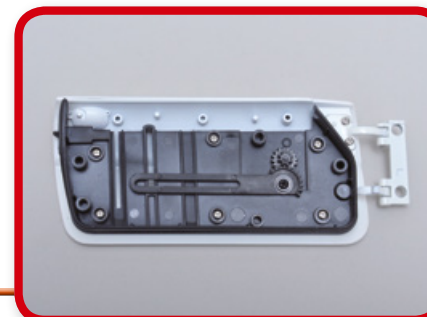
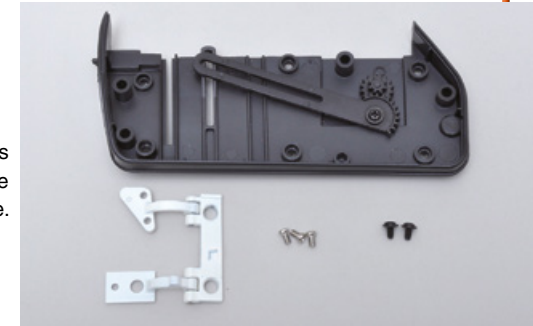
Also attach gearwheel 1, positioning the pieces as shown in the photo.



Secure gearwheel 1 to the inner panel with a type A screw.

FINAL RESULT

This is the result of this assembly session. Keep the pieces in a safe place.

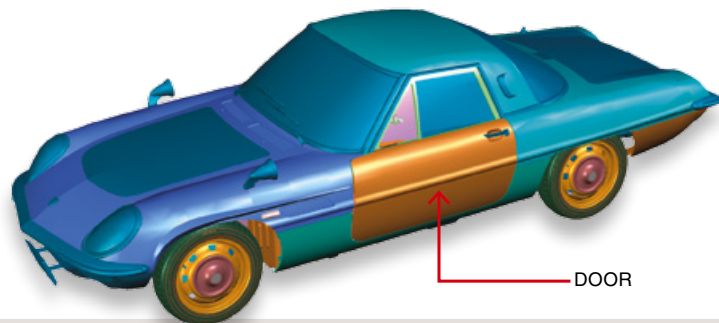


The next stage



77 THE LEFT DOOR – 2

In this stage you will continue to work on the left door of your model. As always, follow the instructions and accompanying photographs carefully.



TOOLS NEEDED

- Cross screwdriver no. 1

LIST OF PIECES

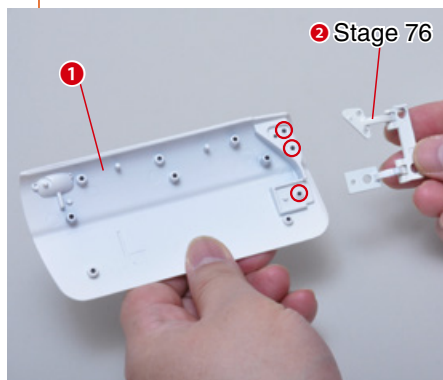


- 1 Door
- 2 Screws (2.3 x 4mm) x7

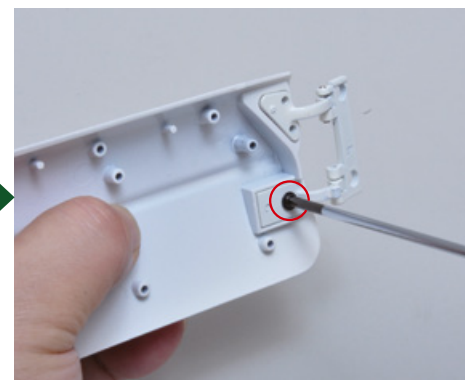
COSMO SPORT

Step

1 The left door – 1



Get the hinge you received with stage 76 and attach it to the door, positioning the pieces as shown in the photo.



Insert and tighten one of the type B screws you received with stage 76 in the circled hole.

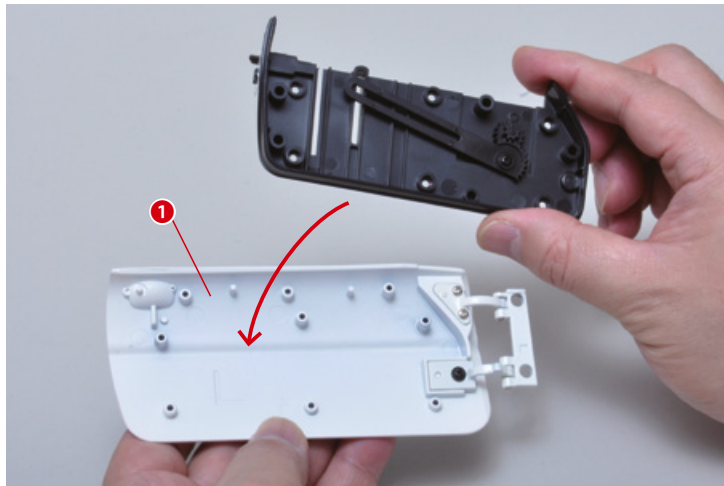


Insert and tighten two of the type C screws you received with stage 76 in the circled holes.

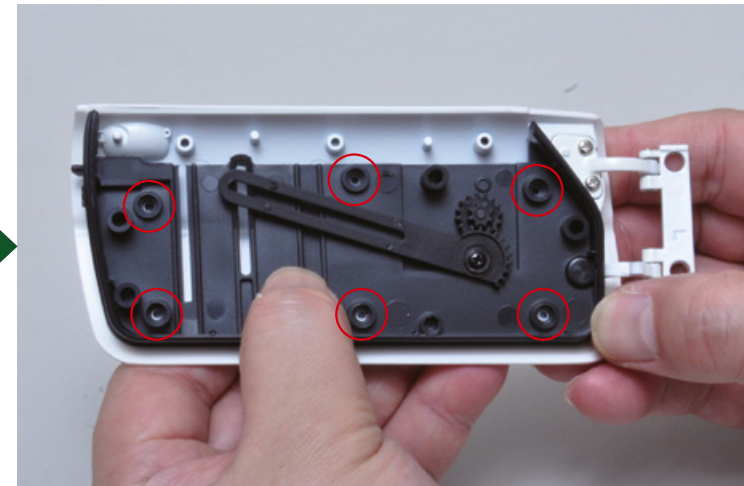


COSMO SPORT

Step 2 The left door – 2



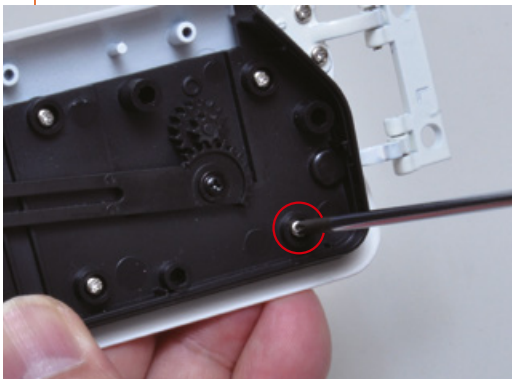
Attach the inner panel you worked on in stage 76 to the door. Position the pieces as shown in the photo.



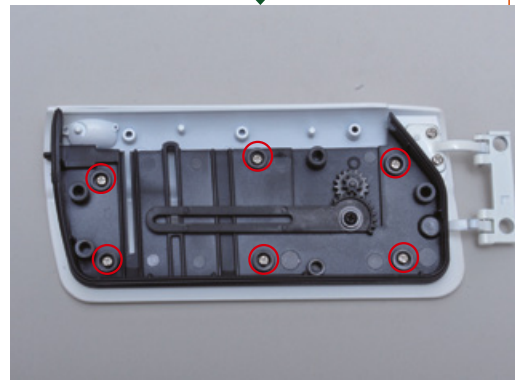
Make sure the screw holes are aligned.

COSMO SPORT

Step 3 The left door – 3

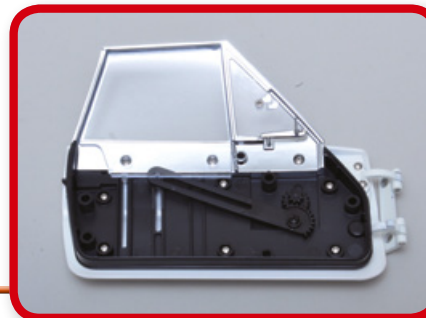


Secure the pieces with six of the screws you received with this stage.



FINAL RESULT

This is the result of this assembly session. Keep the pieces in a safe place.



The next stage