

BUILD THE LEGENDARY

H.M.S.

BOUNTY

ADMIRALTY MODEL

PACK 06



BUILD THE LEGENDARY H.M.S. BOUNTY

ADMIRALTY MODEL

PHASE

PAGE

44	Frame 9	198
45	Frame 10	202
46	Frame 13	206
47	Frames e Keel 2	210
48	Keel 3	229
49	Stern frames	233
50	Keelson	237
51	Culverin 06	240

Design and production by Incipit srl

Assembly guide edited by Milanoedit srl - www.milanoedit.com

Published in Italy by De Agostini Publishing Italia S.p.A., 28100 Novara, Via G. da Verrazano 15

All rights reserved © 2020.

UNSUITABLE FOR CHILDREN UNDER 14. THE PRODUCT IS NOT A TOY

AND MUST BE USED UNDER ADULT SUPERVISION.

PARTS MAY BE DIFFERENT FROM THOSE PICTURED

ASSEMBLY INSTRUCTIONS

PACK 06

List of Components

Frames:

wooden tablet 6-01
wooden tablet 6-02
wooden tablet 6-03
wooden tablet 6-04

Keelson:

wooden tablet 6-05

Transoms and hawse pieces:

wooden tablet 6-06
wooden tablet 6-07

Lifeboat:

wooden tablet 6-08
wooden tablet 6-09
wooden tablet 6-10

1 Culverin

1 Fork



*** Note:** Store tablet 6-08, 6-09 and 6-10, you will use it in the next packs.



5-07, 5-08, 6-06, 6-07



6-08



6-09



6-01



6-02



6-03



6-04



6-05

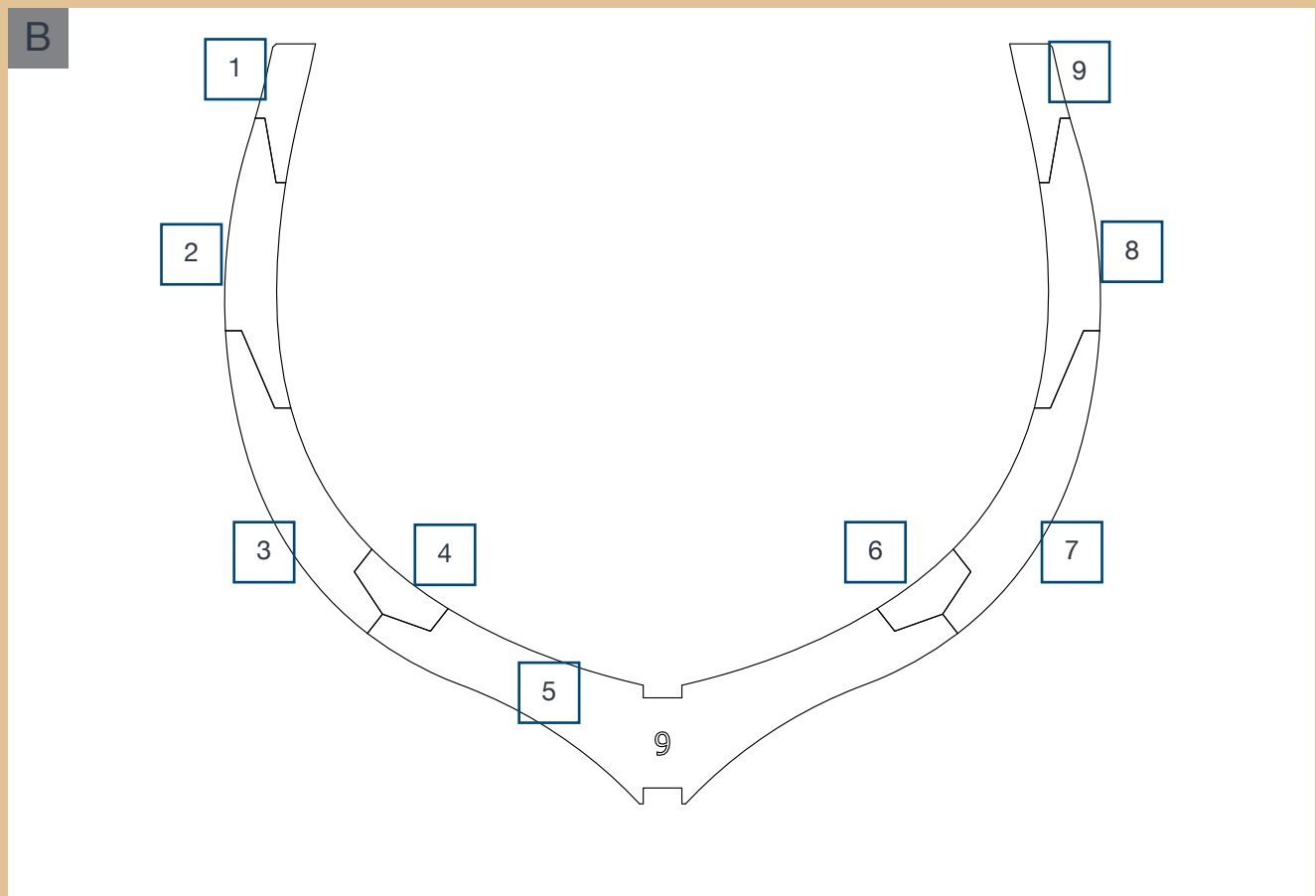
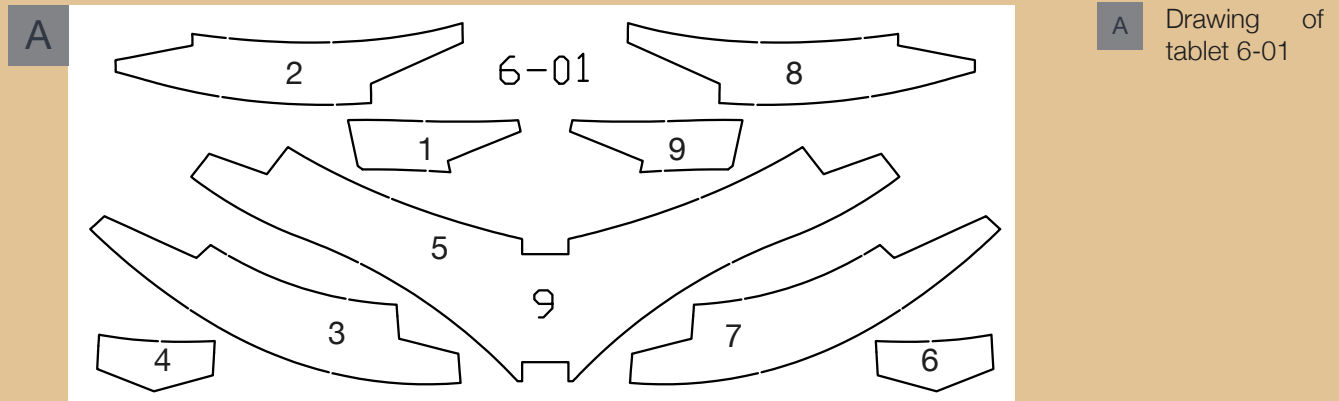


6-10

PHASE 44

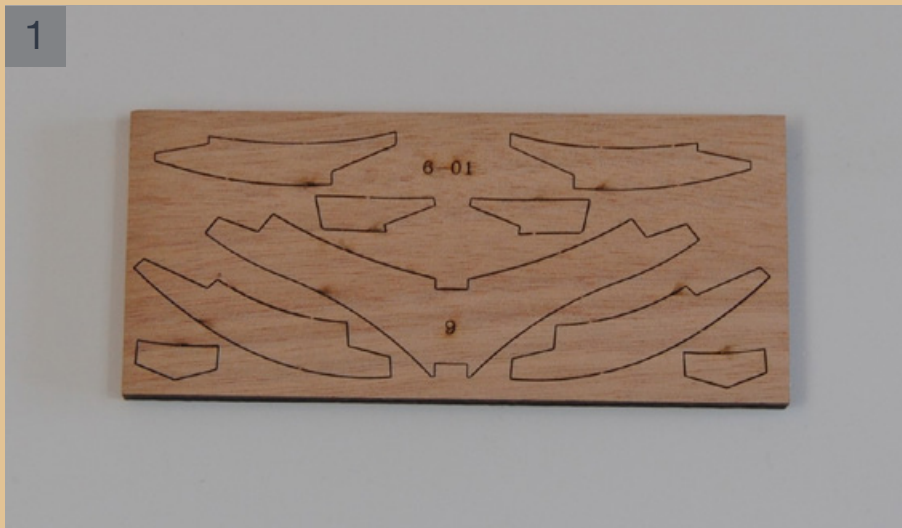
FRAME 9

Print the template of frame 9 in 1:1 scale on A4 size paper.



B Place the pieces of the frame 9 as shown in picture B.

1



1

Frame 9
tablet 6-01.

2



2

Glue the pieces of the frame and before the glue dries, superimpose it onto the 1:1 scale template to check if the pieces have been properly placed.

3



3

Completed frame 9.

4



4

Cut out the templates. Glue the blue template onto the part marked with a number following the outer edge of the frame.

5



5

Turn the frame over and glue the red template onto it following the inner edge of the frame.

6



6

Gently file the inner part of the frame from the inner edge of the blue template to the inner edge of the red template on the other side of the frame.

7



7

Gently file the outer part of the frame from the outer edge of the red template to the outer edge of the blue template on the other side of the frame.

8



8

Remove the blue template from the frame on the side marked with a number.

9



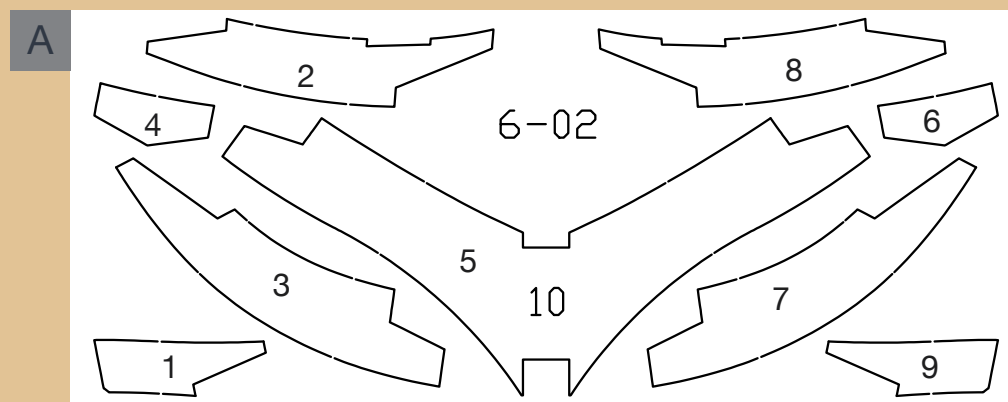
9

Remove the red template from the other side of the frame.

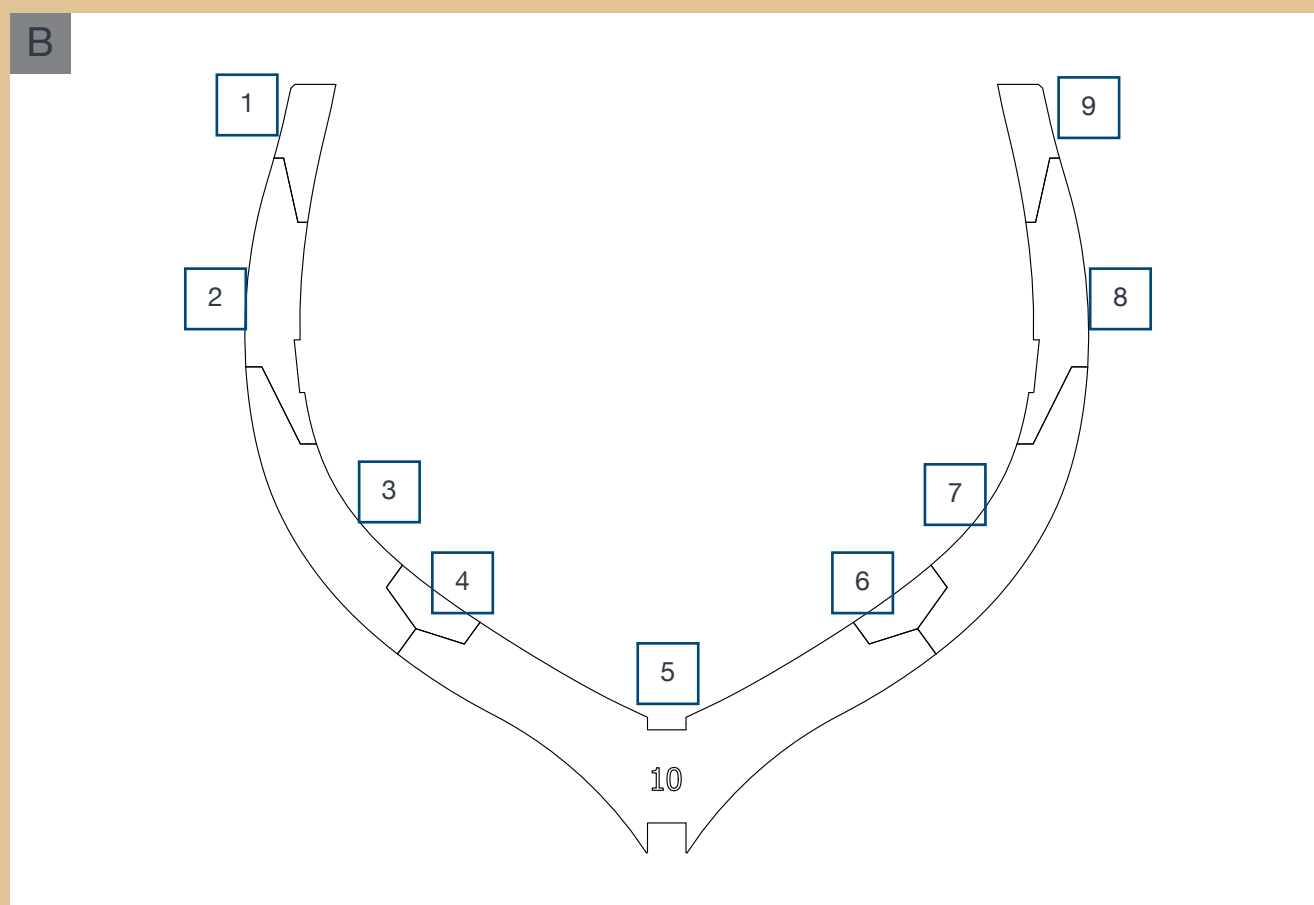
PHASE 45

FRAME 10

Print the template of frame 10 in 1:1 scale on A4 size paper.



A Drawing of tablet 6-02



B Place the pieces of the frame 10 as shown in picture B.

1



1

Frame 10
tablet 6-02.

2



2

Glue the pieces of the frame and before the glue dries, superimpose it onto the 1:1 scale template to check if the pieces have been properly placed.

3



3

Completed frame 10.

4



4

Cut out the templates. Glue the blue template onto the part marked with a number following the outer edge of the frame.

5



5

Turn the frame over and glue the red template onto it following the inner edge of the frame.

6



6

Gently file the inner part of the frame from the inner edge of the blue template to the inner edge of the red template on the other side of the frame.

7



7

Gently file the outer part of the frame from the outer edge of the red template to the outer edge of the blue template on the other side of the frame.

8



8

Remove the blue template from the frame on the side marked with a number.

9



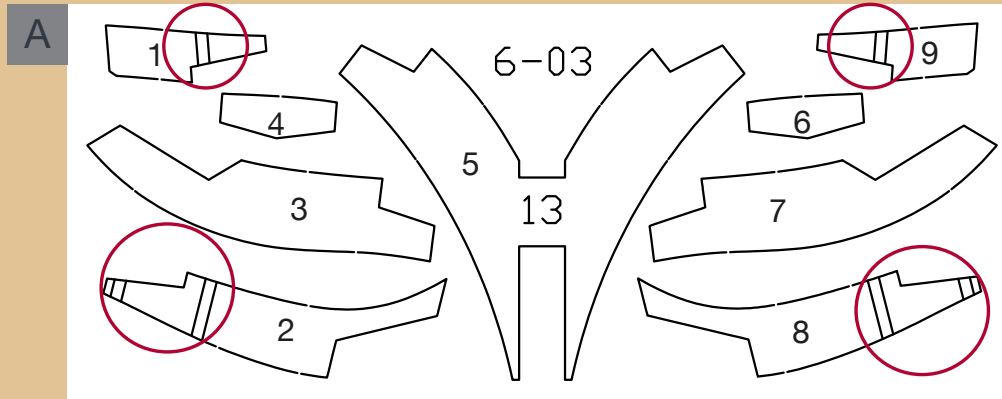
9

Remove the red template from the other side of the frame.

PHASE 46

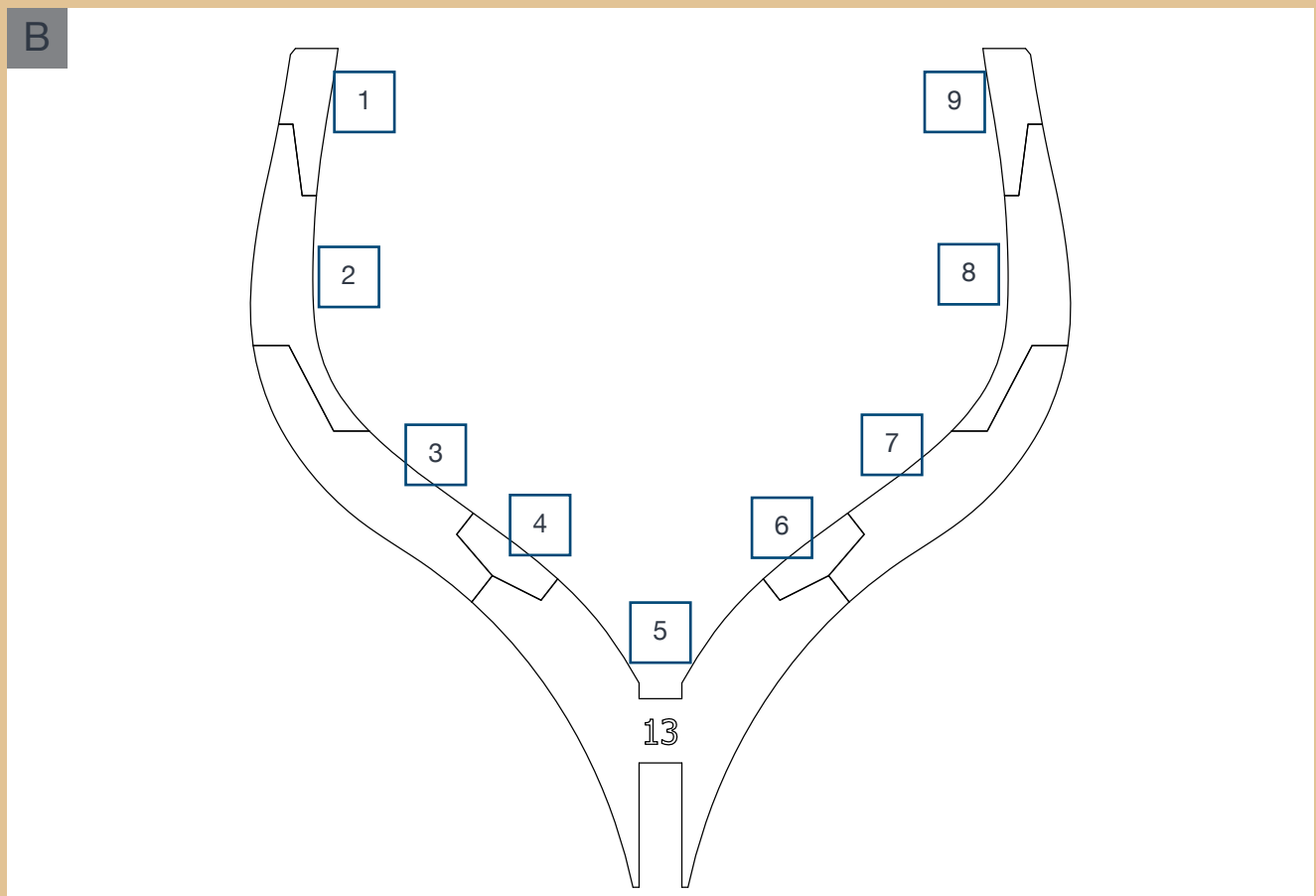
FRAME 13

Print the template of frame 13 in 1:1 scale on A4 size paper.



A Drawing of tablet 6-03

NOTE: the reference notches marked by red circles must be glued to the inner part of the frame.



B Place the pieces of the frame 13 as shown in picture B.

1



1

Frame 13
tablet 6-03.

2



2

Glue the pieces of the frame and before the glue dries, superimpose it onto the 1:1 scale template to check if the pieces have been properly placed.

3



3

Completed frame 13.

4



4

Cut out the templates. Glue the blue template onto the part marked with a number following the outer edge of the frame.

5



5

Turn the frame over and glue the red template onto it following the inner edge of the frame.

6



6

Gently file the inner part of the frame from the inner edge of the blue template to the inner edge of the red template on the other side of the frame.

7



7

Gently file the outer part of the frame from the outer edge of the red template to the outer edge of the blue template on the other side of the frame.

8



8

Remove the blue template from the frame on the side marked with a number.

9



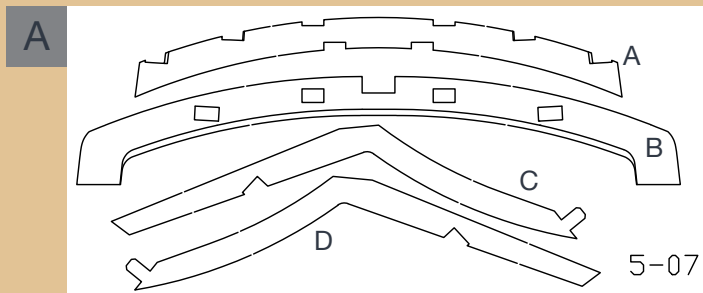
9

Remove the red template from the other side of the frame.

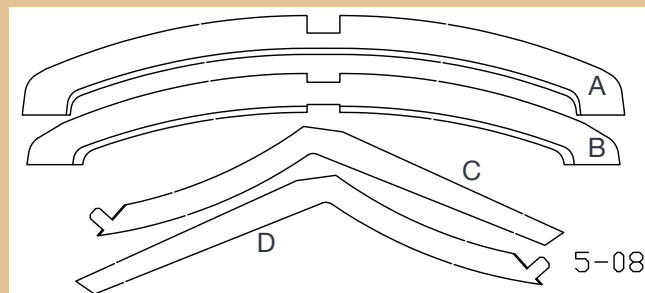
PHASE 47

FRAMES AND KEEL 2

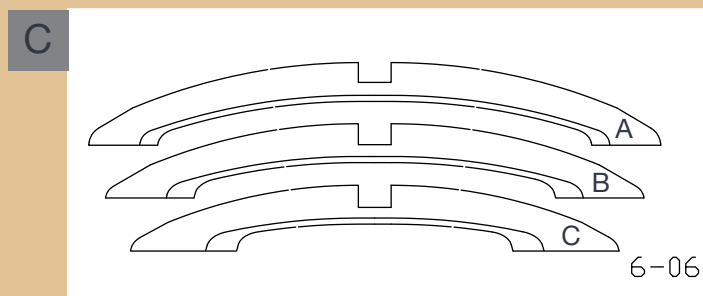
On your work top, arrange tablets 5-07 and 5-08, which you received with pack 05, and tablets 6-04, 6-05, 6-06, 6-07 and 6-09, which you received with this pack.



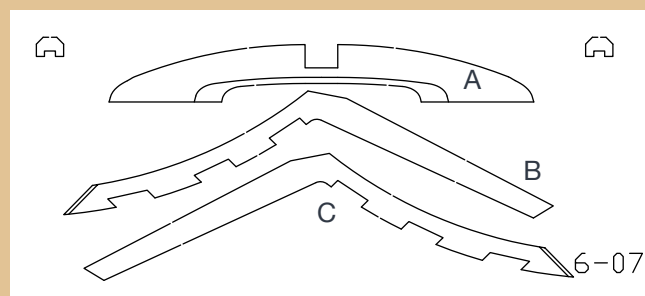
A Drawing of tablet 5-07.



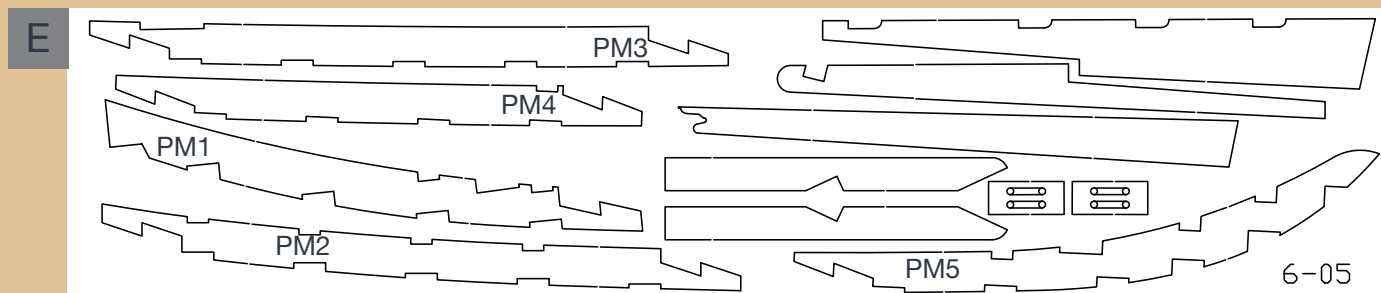
B Drawing of tablet 5-08.



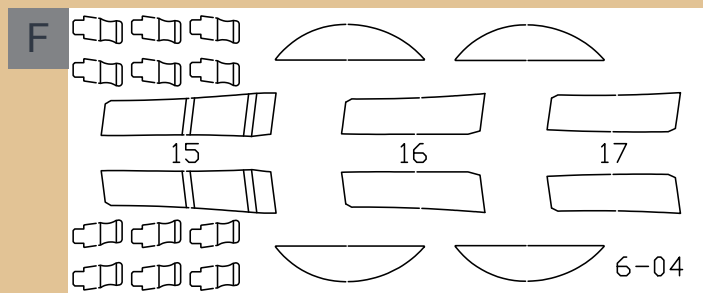
C Drawing of tablet 6-06.



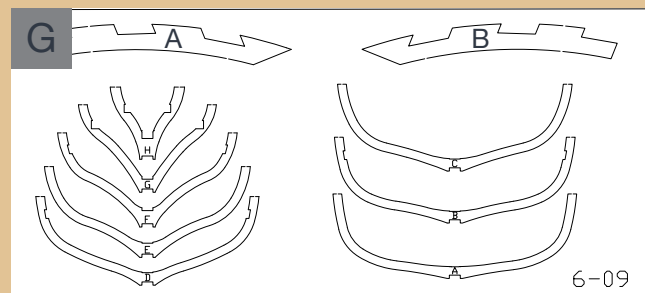
D Drawing of tablet 6-07.



E Drawing of tablet 6-05.

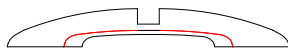


F Drawing of tablet 6-04.



G Drawing of tablet 6-09.

1



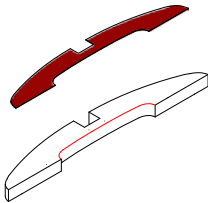
1



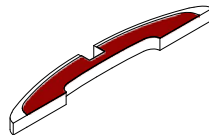
2



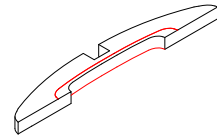
3



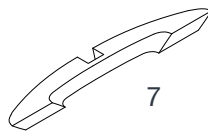
4



5



6

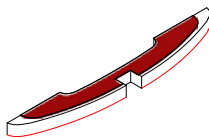


7

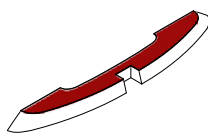
1

Detach piece A from tablet 6-07. On the upper face there is a laser marking, highlighted in red on drawing (1). Turn the piece over and on the lower face (2) glue the corresponding template of set 06 (3) as shown (4, 5). Holding the template face down, file the inner side working from the profile of the upper face (6) as far as the inner profile of the template you glued to the lower face (7).

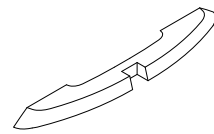
2



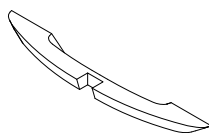
1



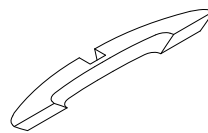
2



3



4

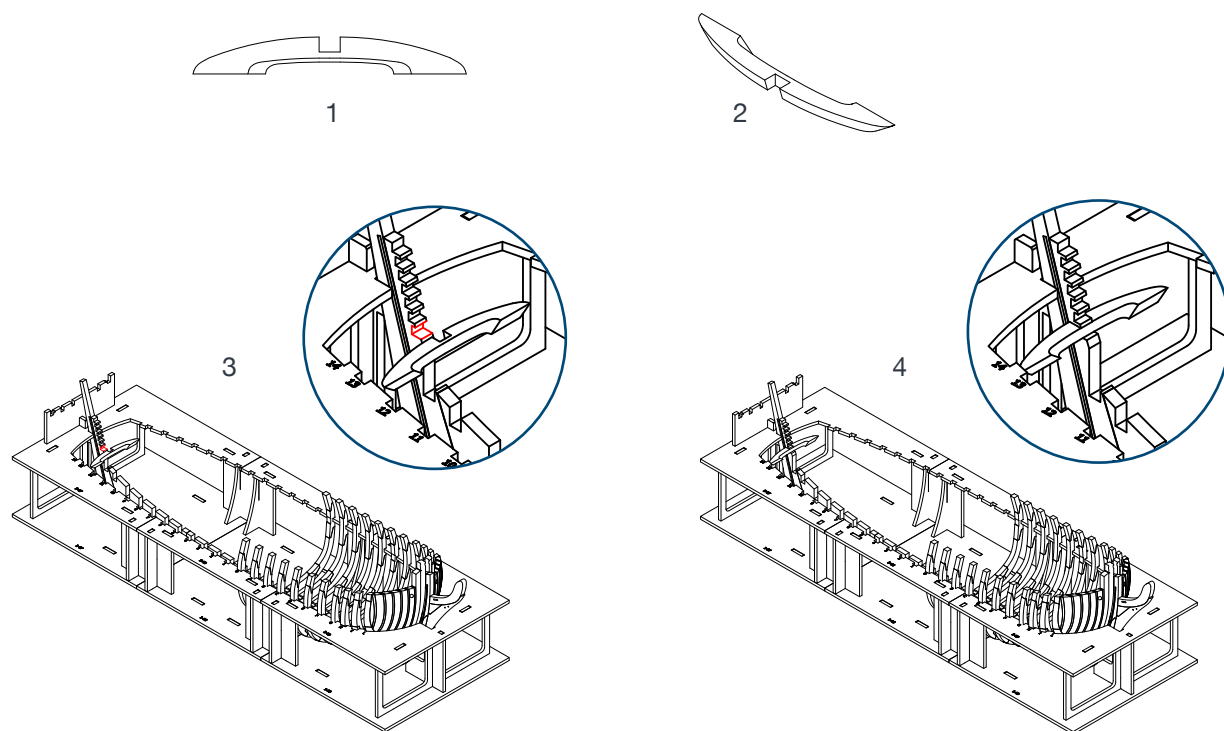


5

2

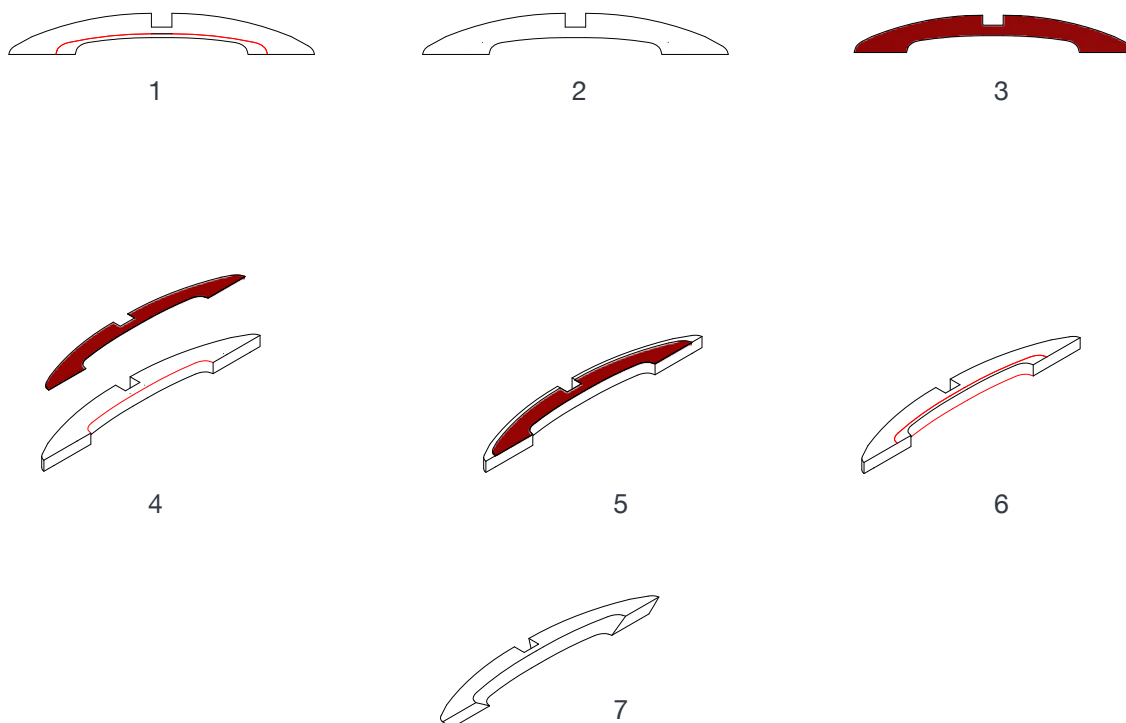
File the outer side from the profile of the template as far as the edge that is highlighted in red on drawing (1). Drawing (2) shows the profile correctly filed down. You can now remove the template (3). Drawings (4) and (5) show the piece worked on both faces.

3



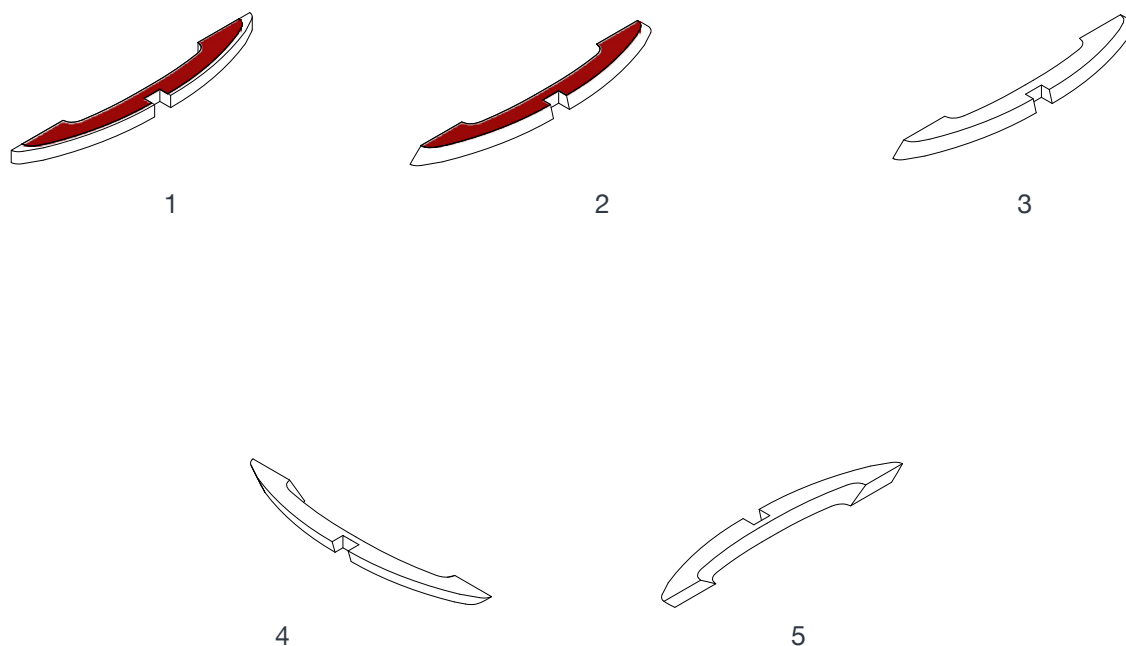
3 Drawing 1 shows the correct position for glueing the transom. Drawing 2 shows the cutout that is to be inserted into the rabbeted sternpost. Apply a drop of glue on the step highlighted in picture 3 and position the transom (4).

4



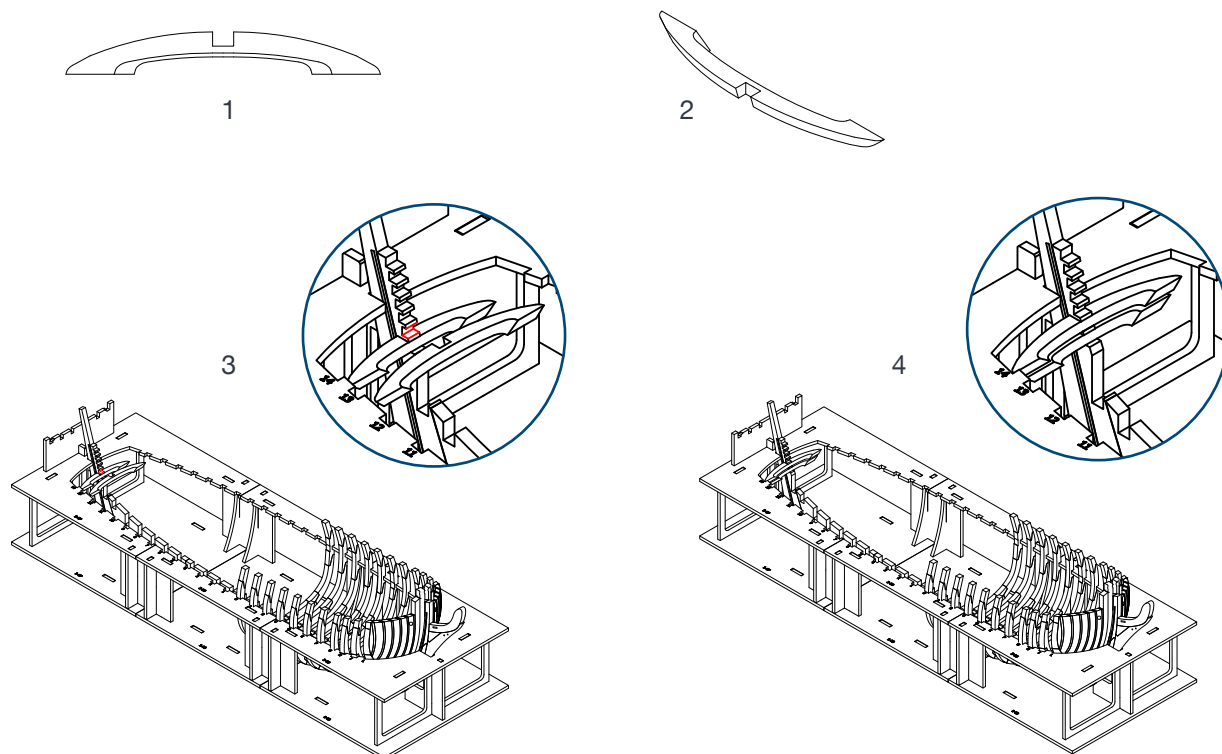
4 Detach piece C from tablet 6-06. On the upper face there is a laser marking, highlighted in red on drawing (1). Turn the piece over and on the lower face (2) glue the corresponding template of set 06 (3) as shown (4, 5). Holding the template face down, file the inner side working from the profile of the upper face (6) as far as the inner profile of the template you glued to the lower face (7).

5



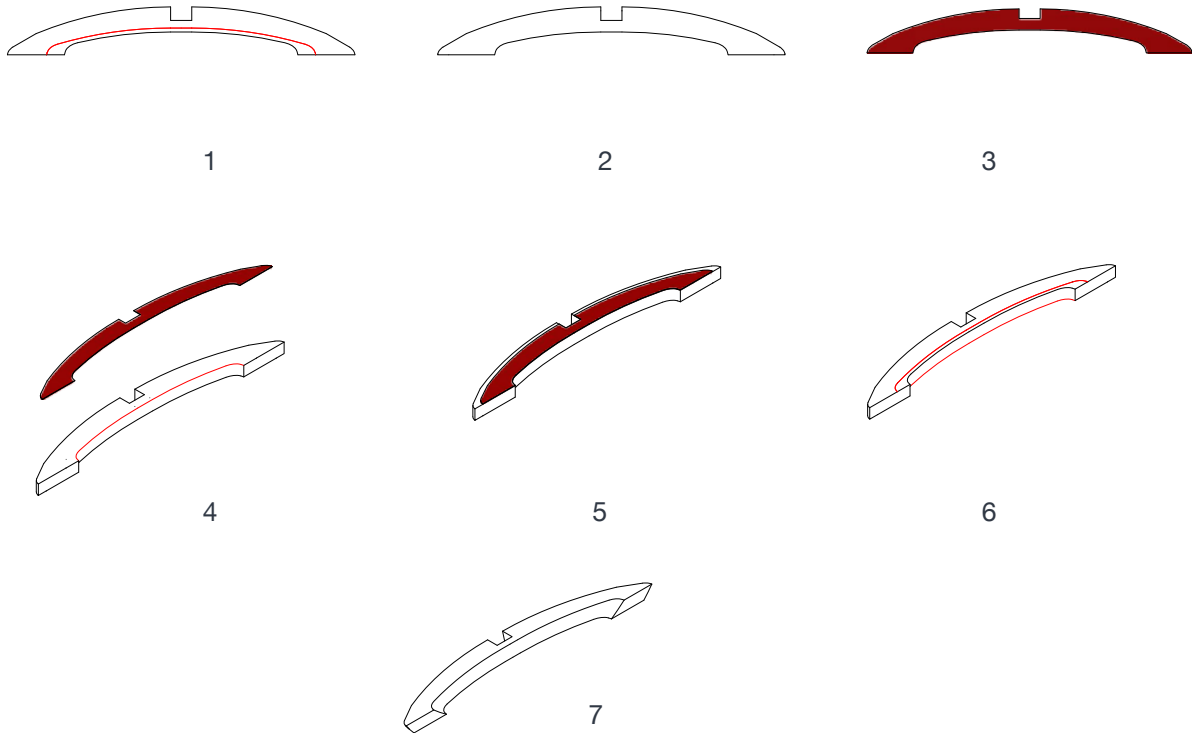
- 5 File the outer side from the profile of the template as far as the edge that is highlighted in red on drawing (1). Drawing (2) shows the profile correctly filed down. You can now remove the template (3). Drawings (4) and (5) show the piece worked on both faces.

6



- 6 Drawing 1 shows the correct position for glueing the transom. Drawing 2 shows the cutout that is to be inserted into the rabbeted sternpost. Apply a drop of glue on the step highlighted in picture 3 and position the transom (4).

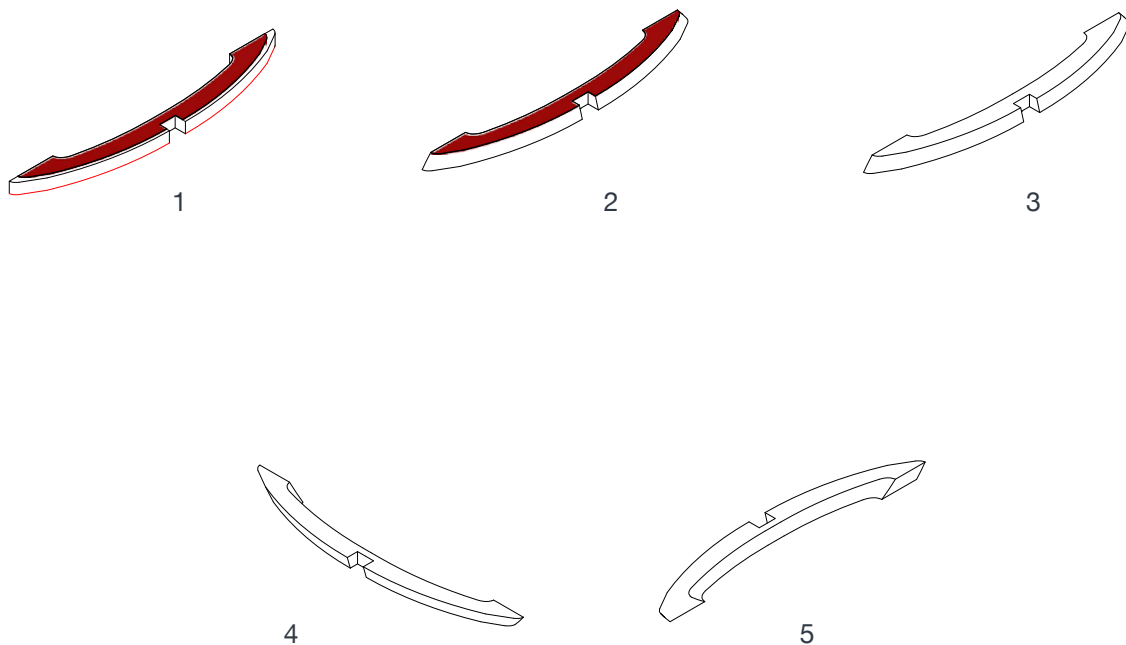
7



7

Detach piece B from tablet 6-06. On the upper face there is a laser marking, highlighted in red on drawing (1). Turn the piece over and on the lower face (2) glue the corresponding template of set 06 (3) as shown (4, 5). Holding the template face down, file the inner side working from the profile of the upper face (6) as far as the inner profile of the template you glued to the lower face (7).

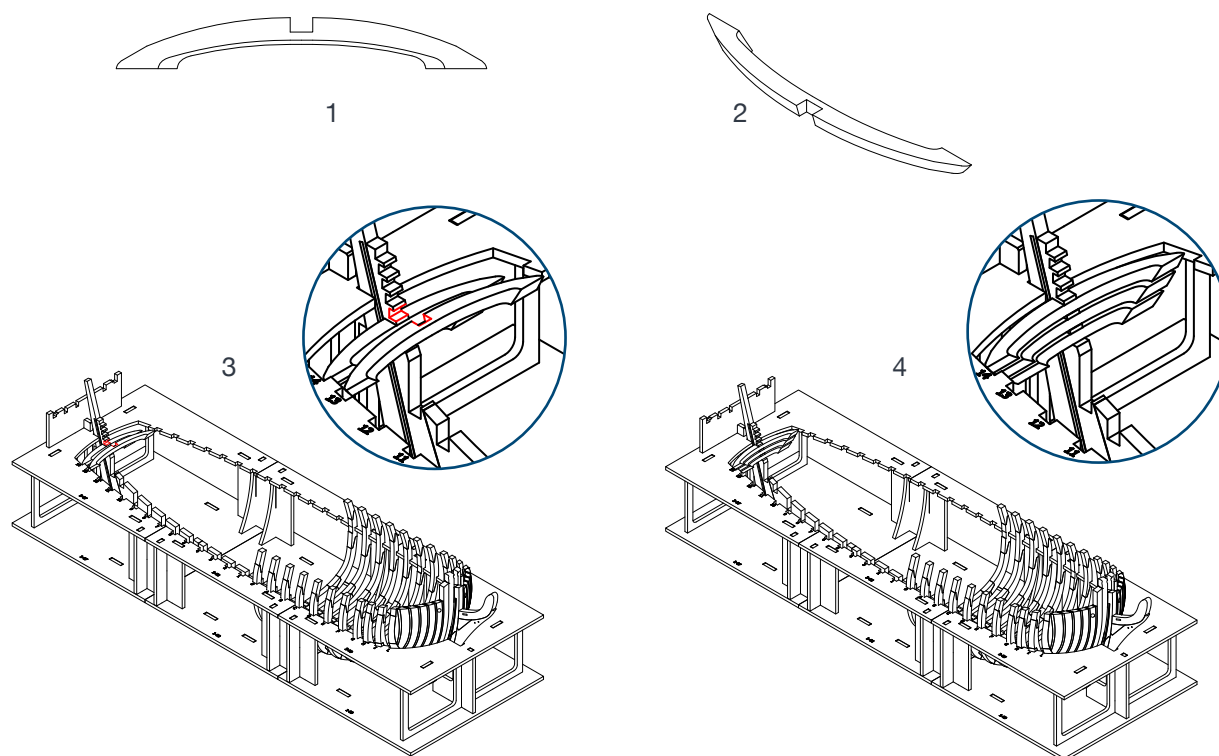
8



8

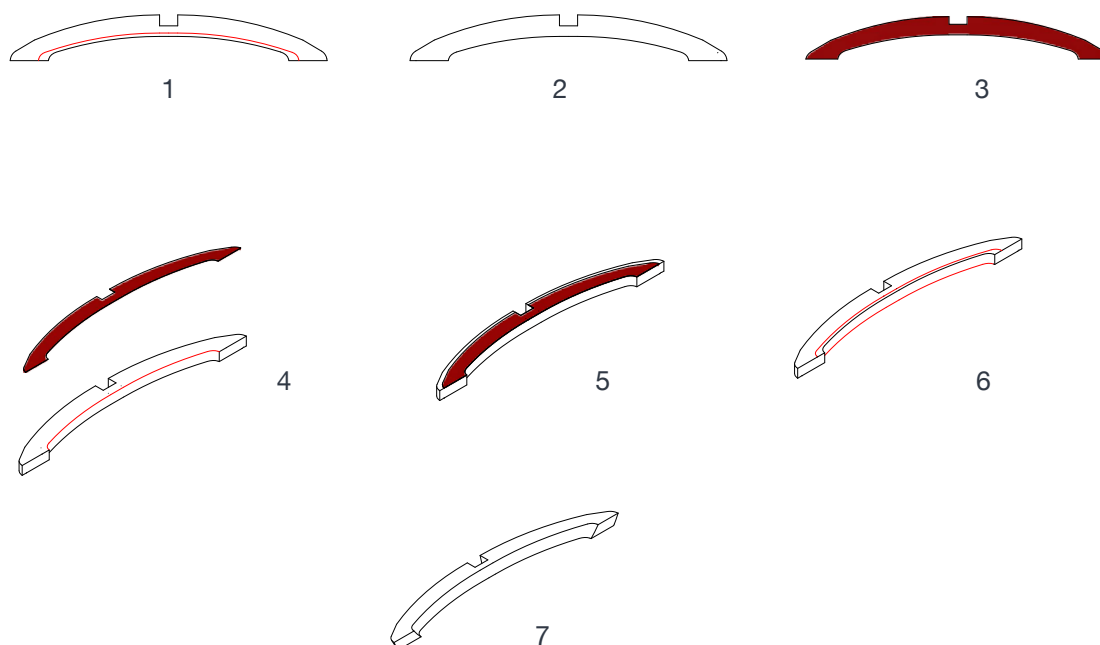
File the outer side from the profile of the template as far as the edge that is highlighted in red on drawing (1). Drawing (2) shows the profile correctly filed down. You can now remove the template (3). Drawings (4) and (5) show the piece worked on both faces.

9



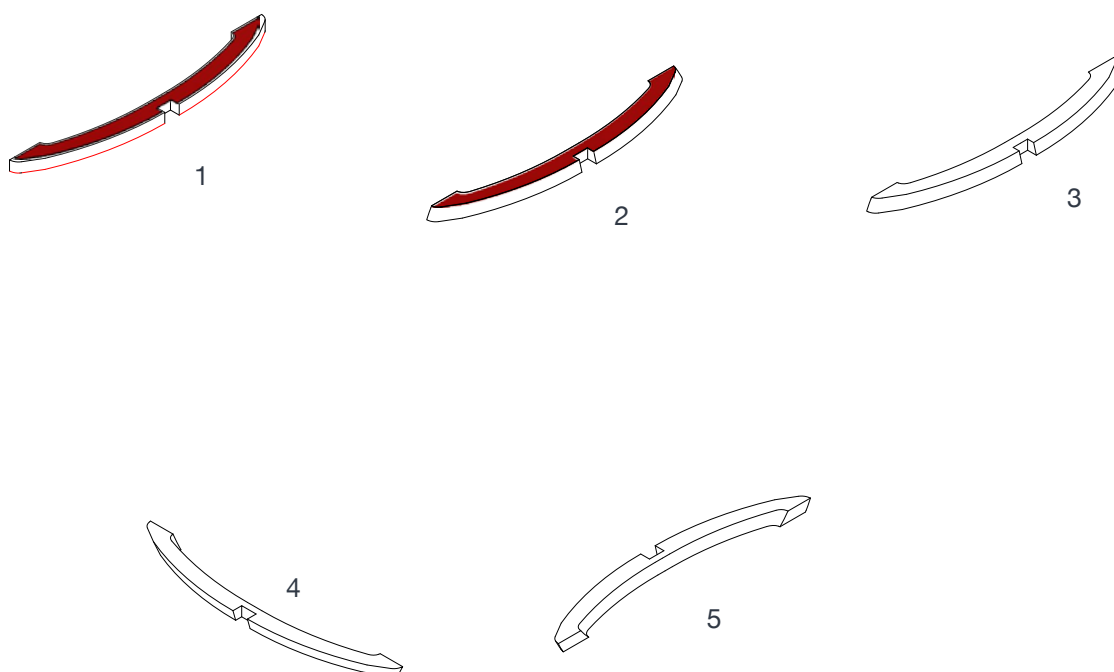
- 9 Drawing 1 shows the correct position for glueing the transom. Drawing 2 shows the cutout that is to be inserted into the rabbeted sternpost. Apply a drop of glue on the step highlighted in picture 3 and position the transom (4).

10



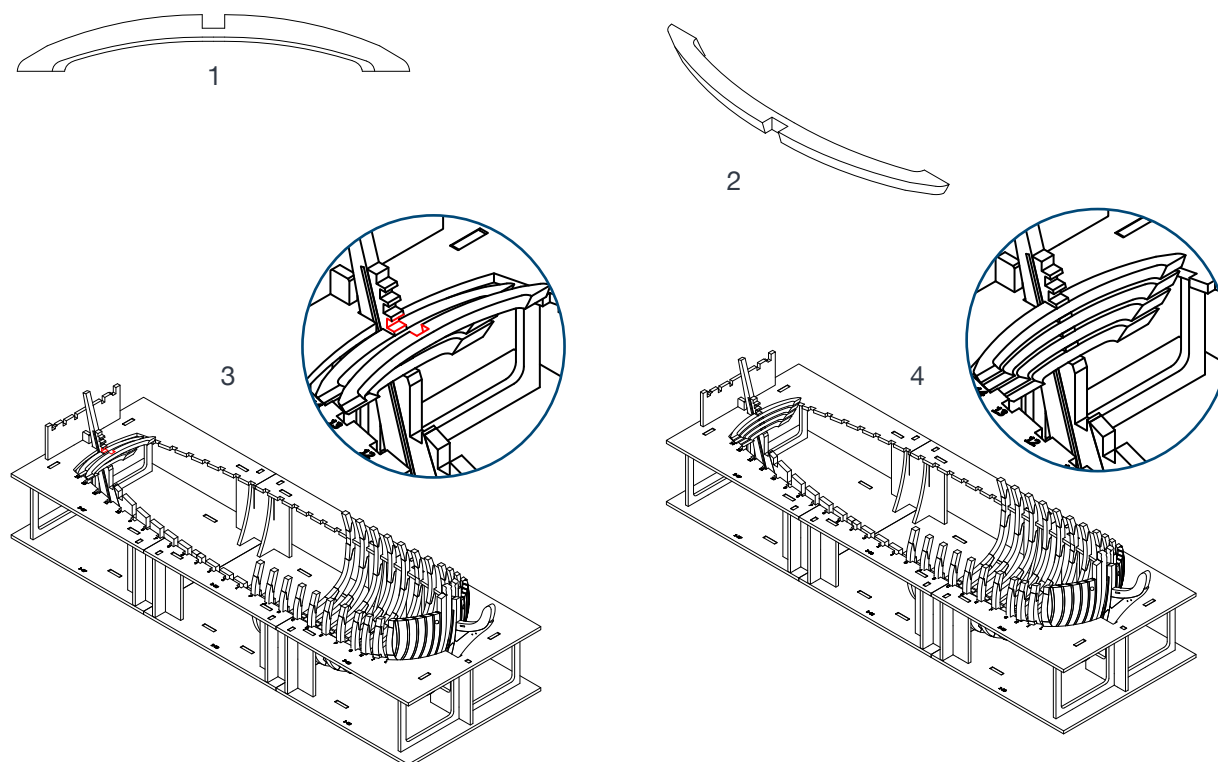
- 10 Detach piece A from tablet 6-06. On the upper face there is a laser marking, highlighted in red on drawing (1). Turn the piece over and on the lower face (2) glue the corresponding template of set 06 (3) as shown (4, 5). Holding the template face down, file the inner side working from the profile of the upper face (6) as far as the inner profile of the template you glued to the lower face (7).

11



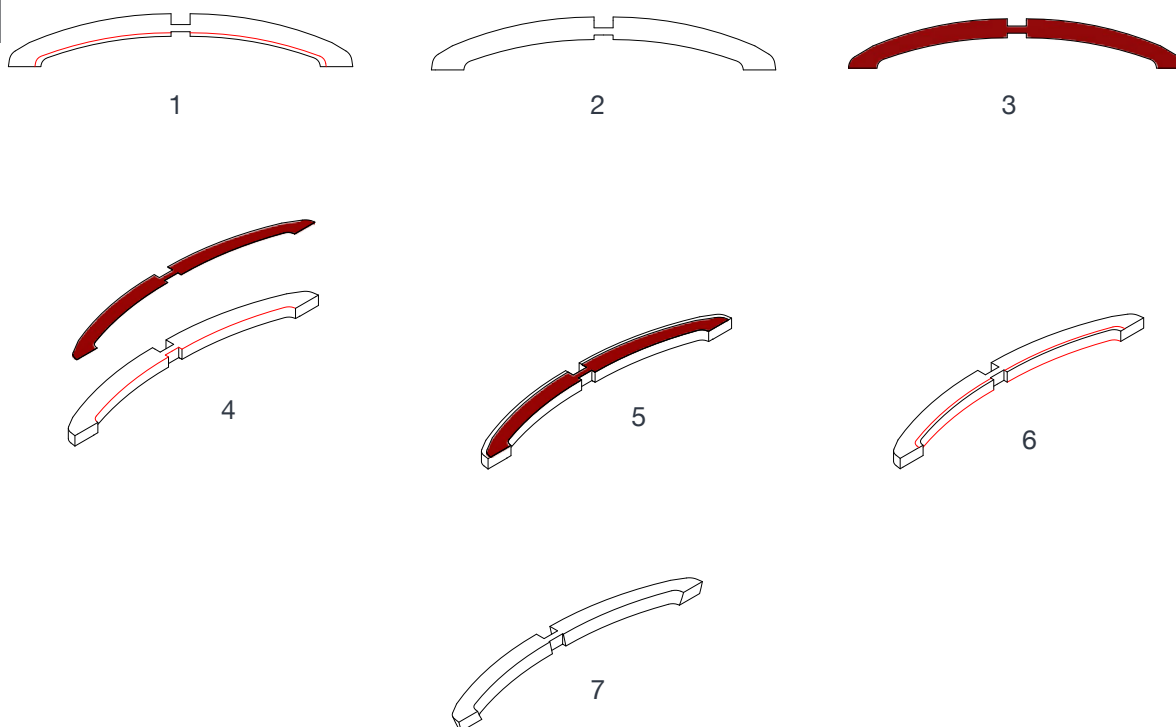
- 11 File the outer side from the profile of the template as far as the edge that is highlighted in red on drawing (1). Drawing (2) shows the profile correctly filed down. You can now remove the template (3). Drawings (4) and (5) show the piece worked on both faces.

12



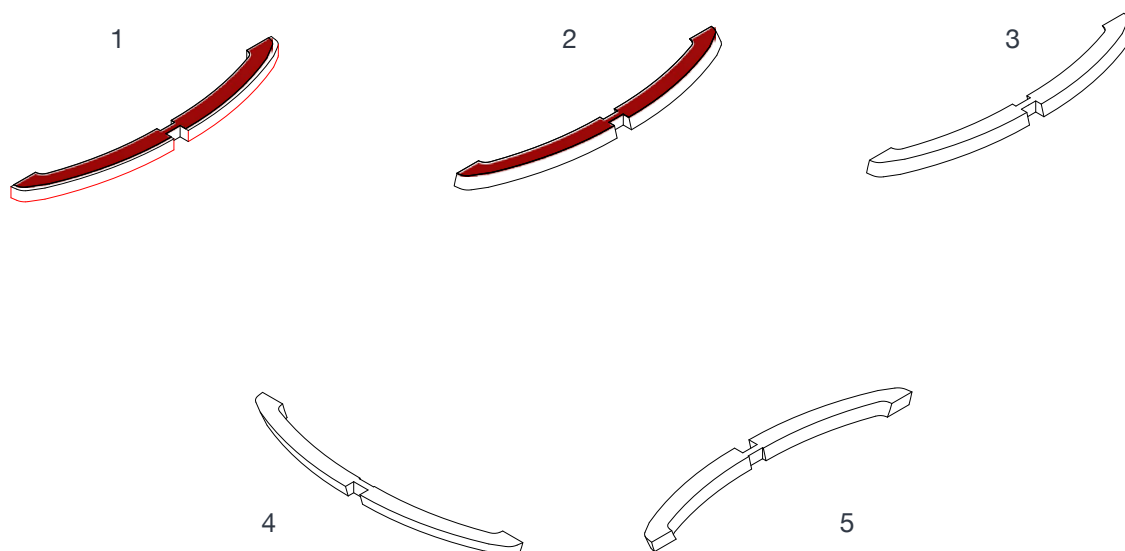
- 12 Drawing 1 shows the correct position for glueing the transom. Drawing 2 shows the cutout that is to be inserted into the rabbeted sternpost. Apply a drop of glue on the step highlighted in picture 3 and position the transom (4).

13



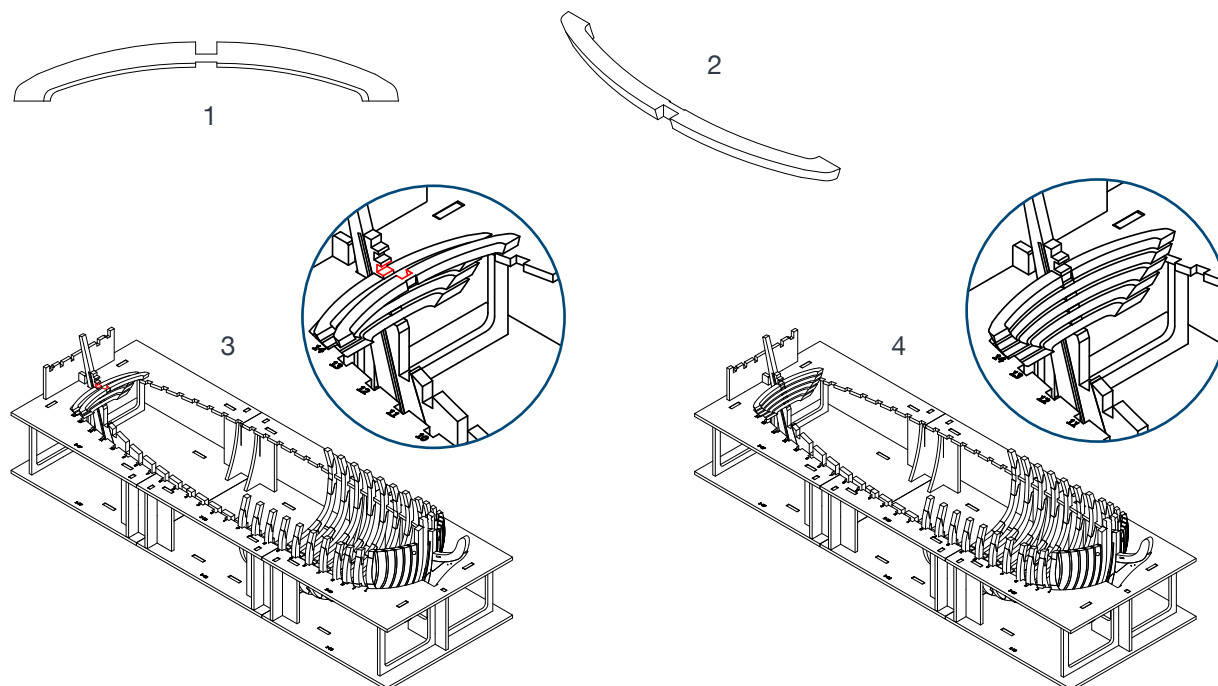
- 13 Detach piece B from tablet 5-08. On the upper face there is a laser marking, highlighted in red on drawing (1). Turn the piece over and on the lower face (2) glue the corresponding template of set 05 (3) as shown (4, 5). Holding the template face down, file the inner side working from the profile of the upper face (6) as far as the inner profile of the template you glued to the lower face (7).

14



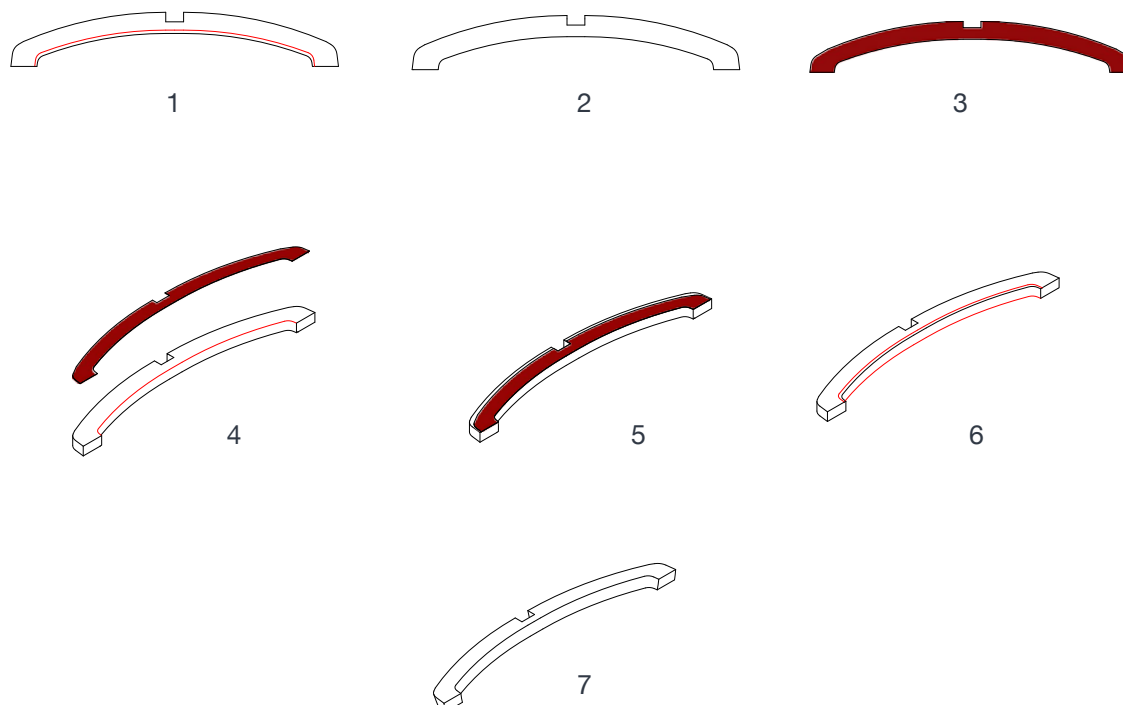
- 14 File the outer side from the profile of the template as far as the edge that is highlighted in red on drawing (1). Drawing (2) shows the profile correctly filed down. You can now remove the template (3). Drawings (4) and (5) show the piece worked on both faces.

15



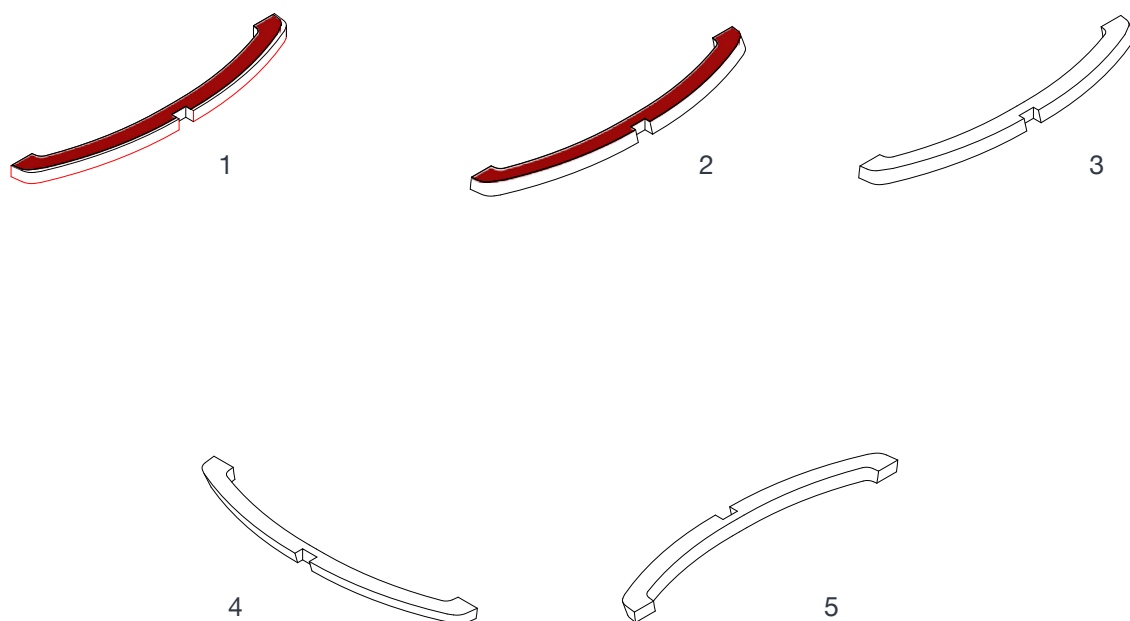
- 15 Drawing 1 shows the correct position for glueing the transom. Drawing 2 shows the cutout that is to be inserted into the rabbeted sternpost. Apply a drop of glue on the step highlighted in picture 3 and position the transom (4).

16



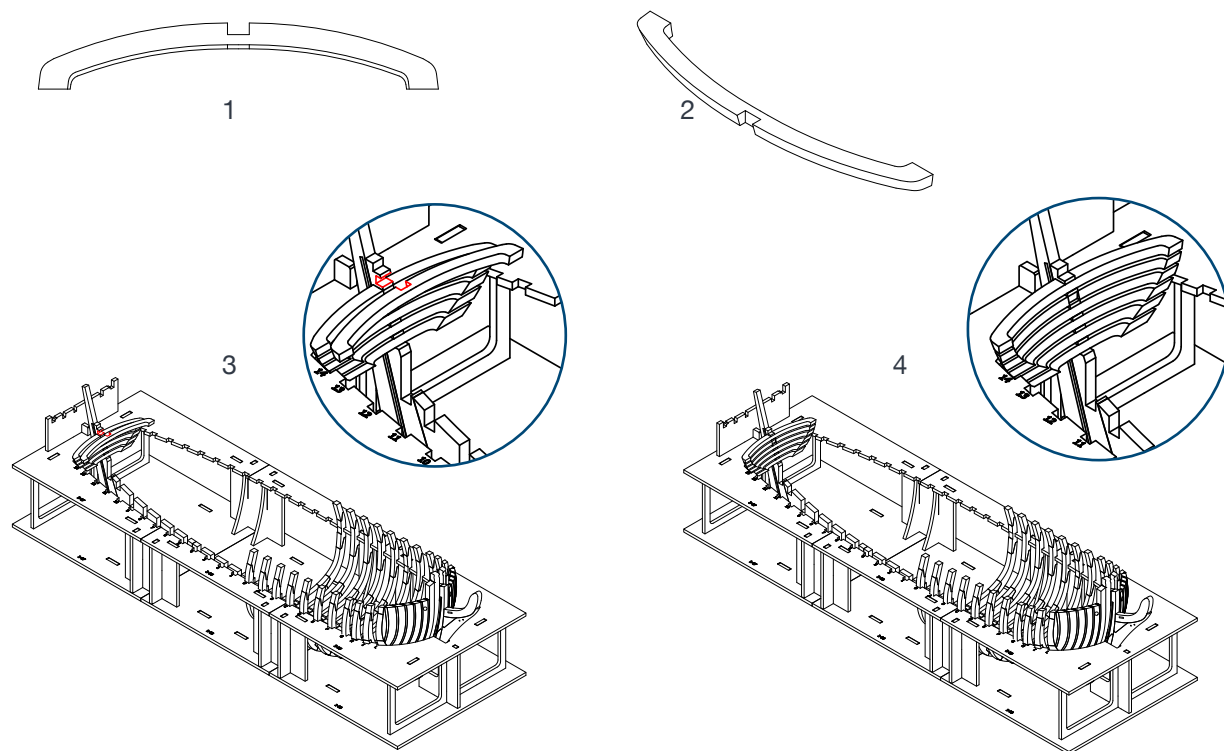
- 16 Detach piece A from tablet 5-08.
On the upper face there is a laser marking, highlighted in red on drawing (1).
Turn the piece over and on the lower face (2) glue the corresponding template of set 05 (3) as shown (4, 5).
Holding the template face down, file the inner side working from the profile of the upper face (6) as far as the inner profile of the template you glued to the lower face (7).

17



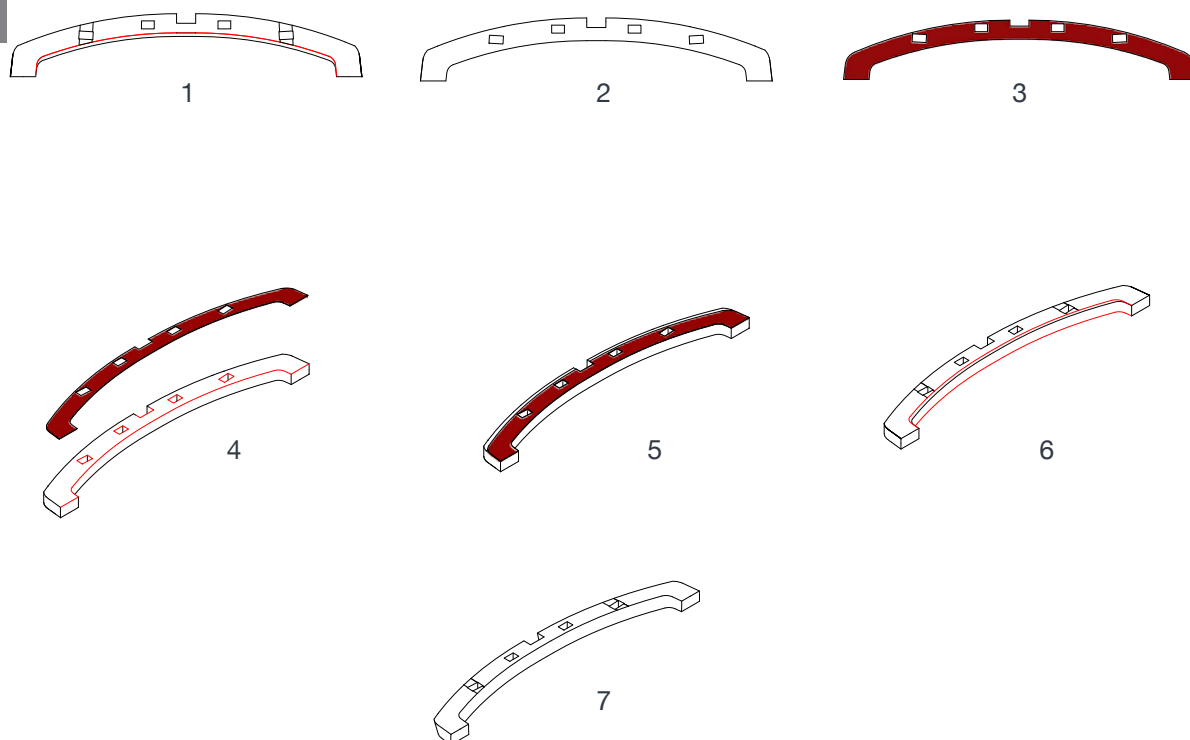
- 17 File the outer side from the profile of the template as far as the edge that is highlighted in red on drawing (1). Drawing (2) shows the profile correctly filed down. You can now remove the template (3). Drawings (4) and (5) show the piece worked on both faces.

18



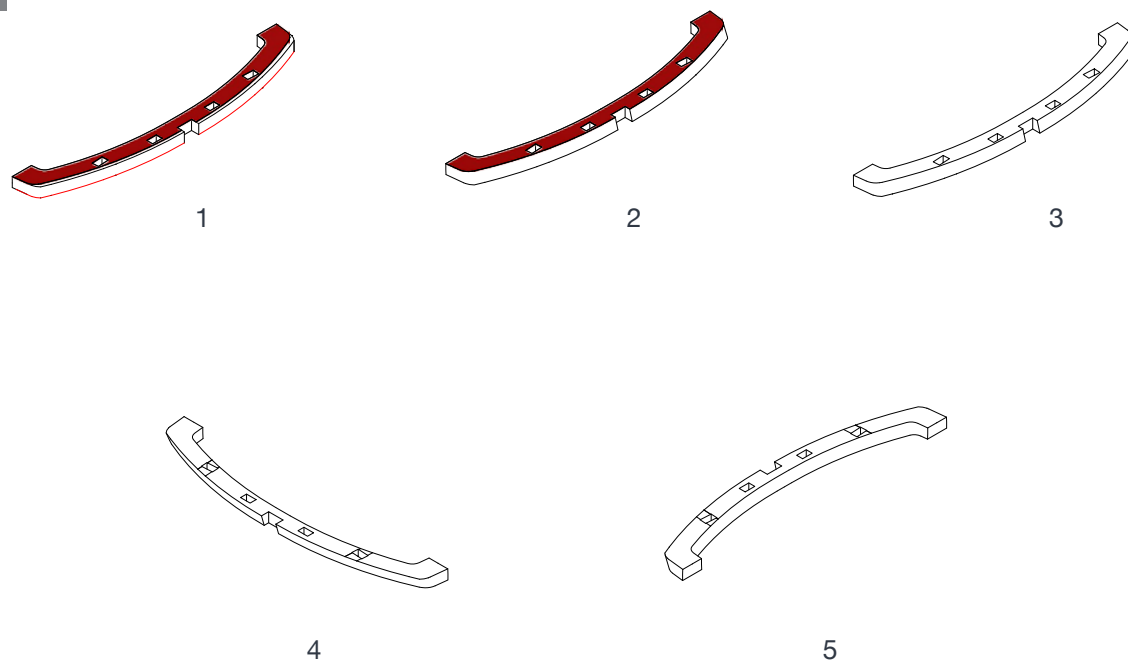
- 18 Drawing 1 shows the correct position for glueing the transom. Drawing 2 shows the cutout that is to be inserted into the rabbeted sternpost. Apply a drop of glue on the step highlighted in picture 3 and position the transom (4).

19



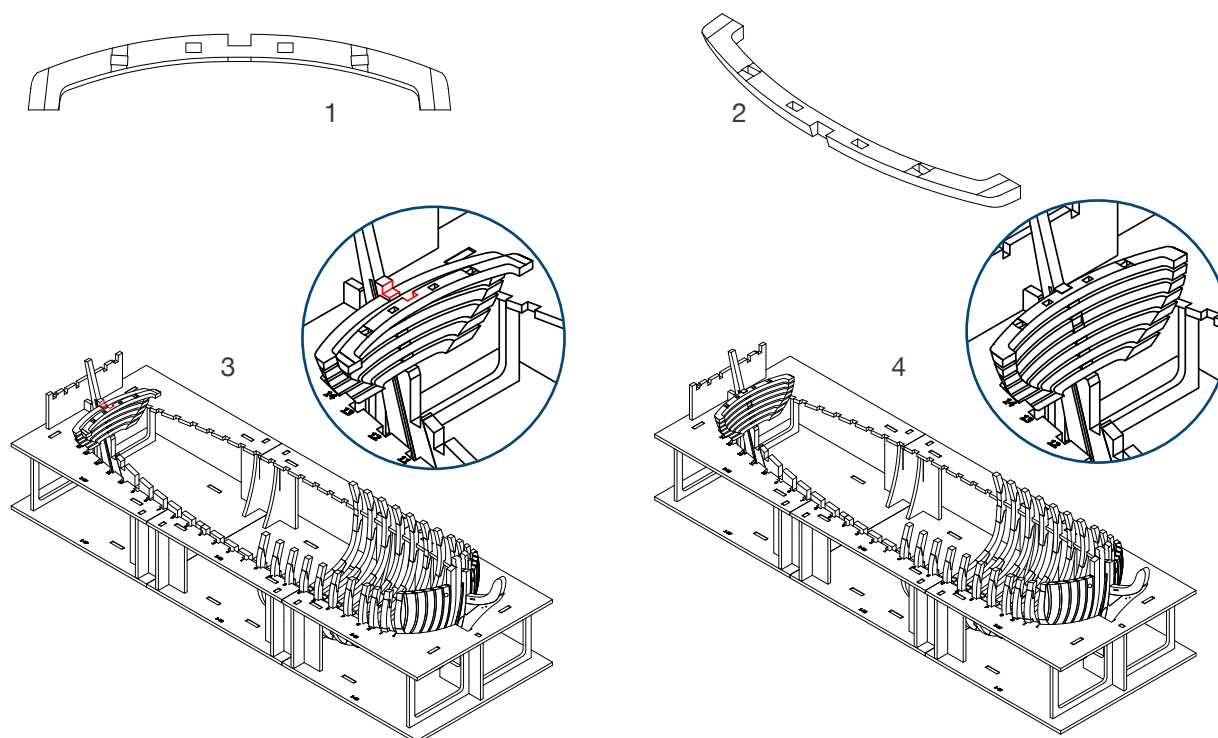
- 19 Detach piece B from tablet 5-07. On the upper face there is a laser marking, highlighted in red on drawing (1). Turn the piece over and on the lower face (2) glue the corresponding template of set 05 (3) as shown (4, 5). Holding the template face down, file the inner side working from the profile of the upper face (6) as far as the inner profile of the template you glued to the lower face (7).

20



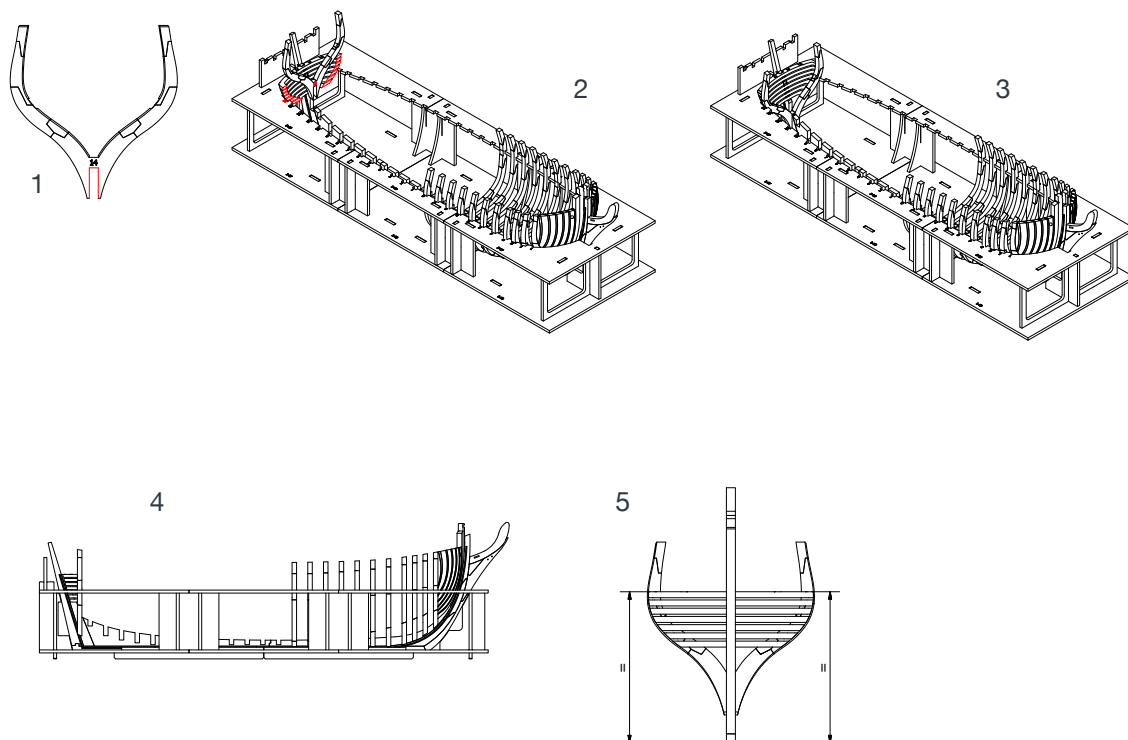
- 20 File the outer side from the profile of the template as far as the edge that is highlighted in red on drawing (1). Drawing (2) shows the profile correctly filed down. You can now remove the template (3). Drawings (4) and (5) show the piece worked on both faces.

21



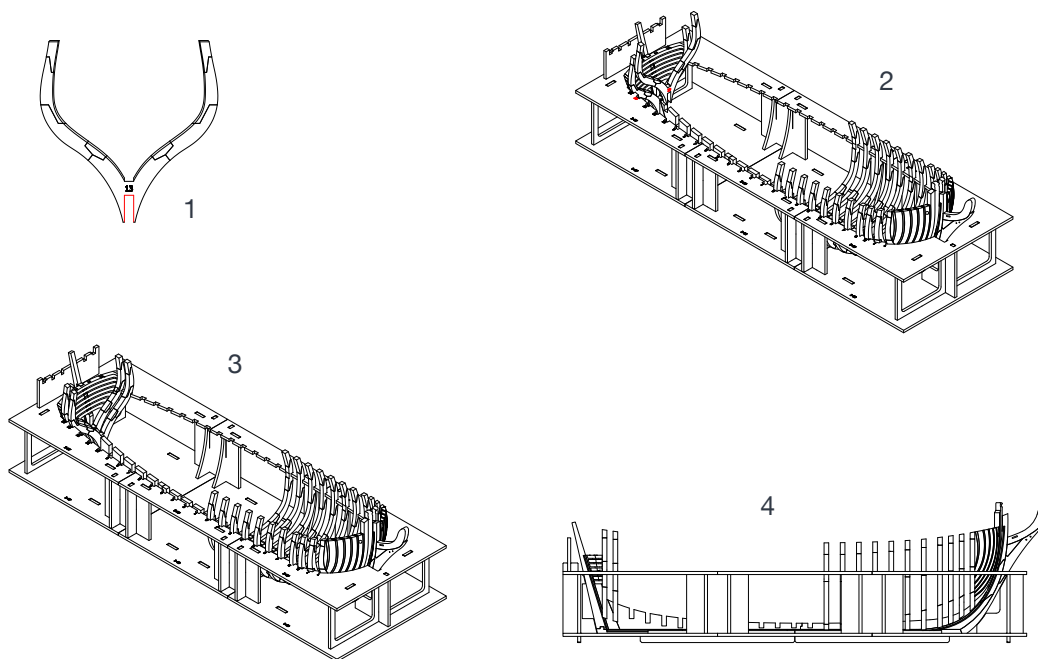
21 Drawing 1 shows the correct position for glueing the transom. Drawing 2 shows the cutout that is to be inserted into the rabbeted sternpost. Apply a drop of glue on the step highlighted in picture 3 and position the transom (4).

22



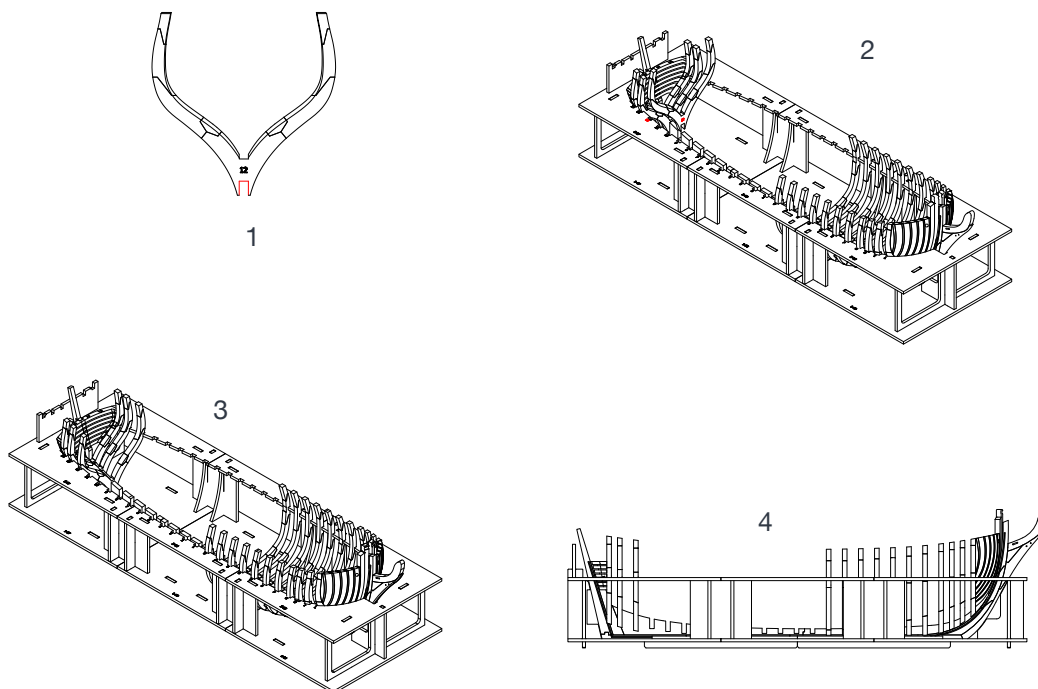
22 Take frame 14 and apply a drop of glue to the slot highlighted in red in picture 1. Also apply a small amount of glue to the ends of the transoms that are highlighted in red in picture 2; insert the frame into the slot on the keel that corresponds to the seating numbered 14 on the shipyard (pictures 2 and 3). Picture 4 shows the side view with the correct position of the transoms and frame 14. Before the glue dries, check that the transoms are parallel and perfectly horizontal; to make this check you can take the model out of the shipyard (picture 5).

23

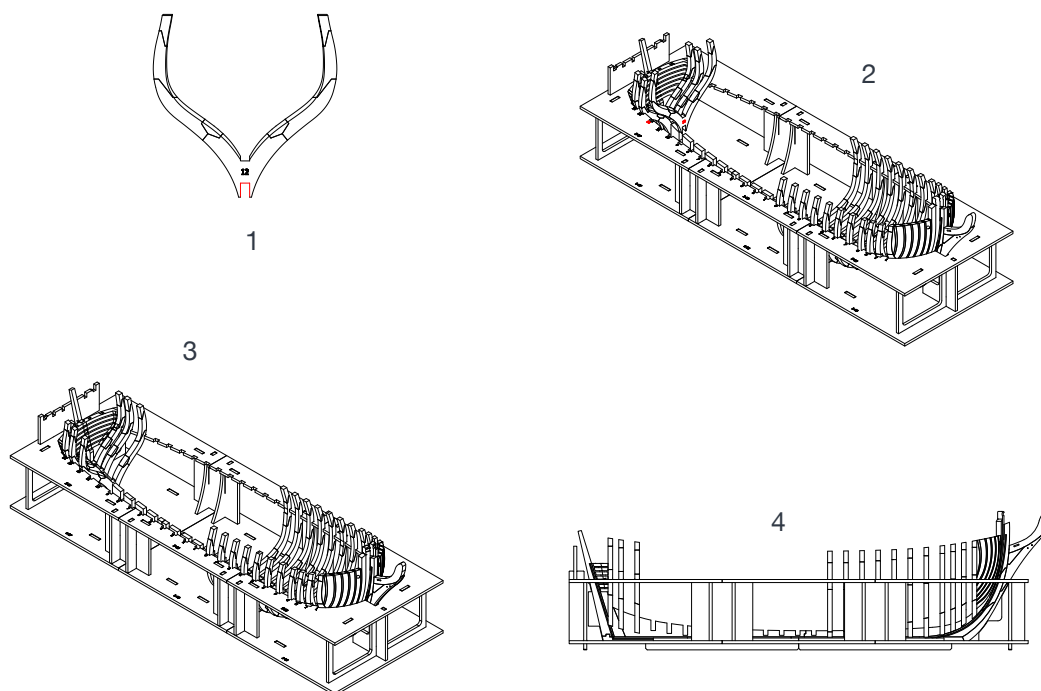


- 23 Take frame 13 and apply a drop of glue to the slot highlighted in red in picture 1. Insert the frame into the slot on the keel at the seating numbered 13 on the shipyard (pictures 2 and 3). The number of the frame must face towards the bow of the model. **Repeat the same operations for the other frames from 12 to 1 (steps 24-35).**

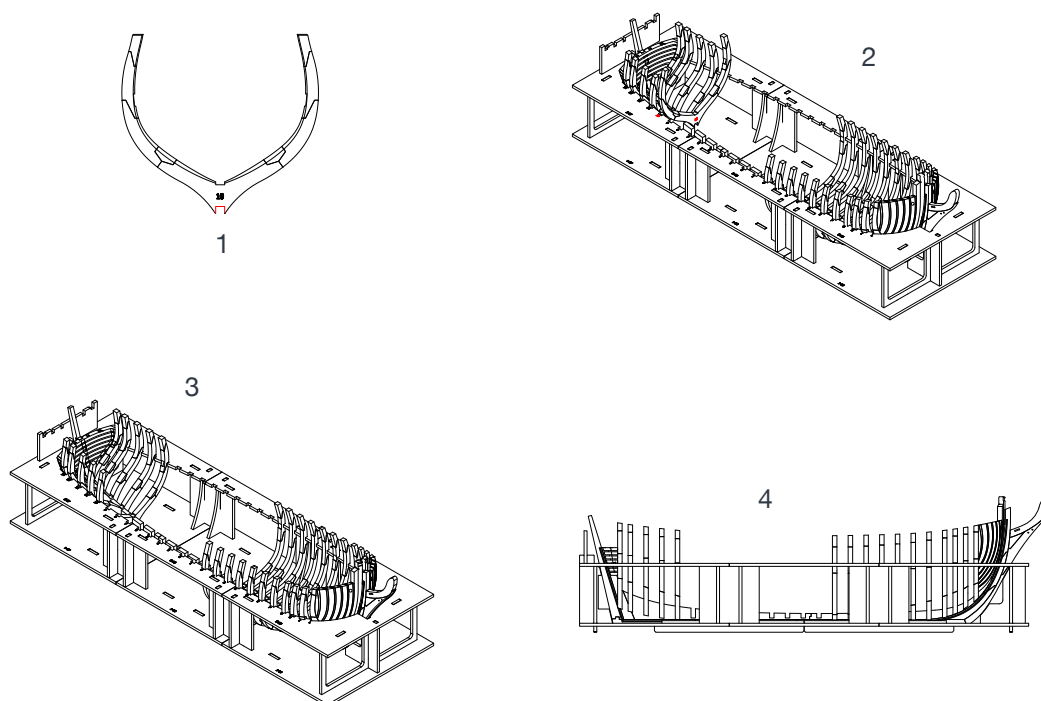
24



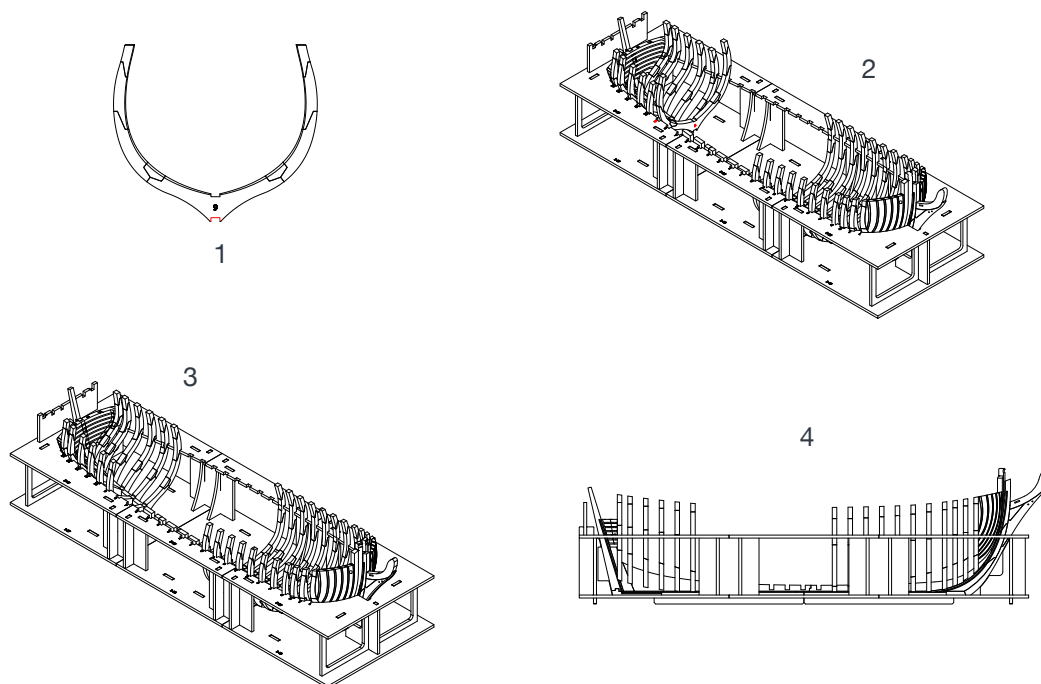
25



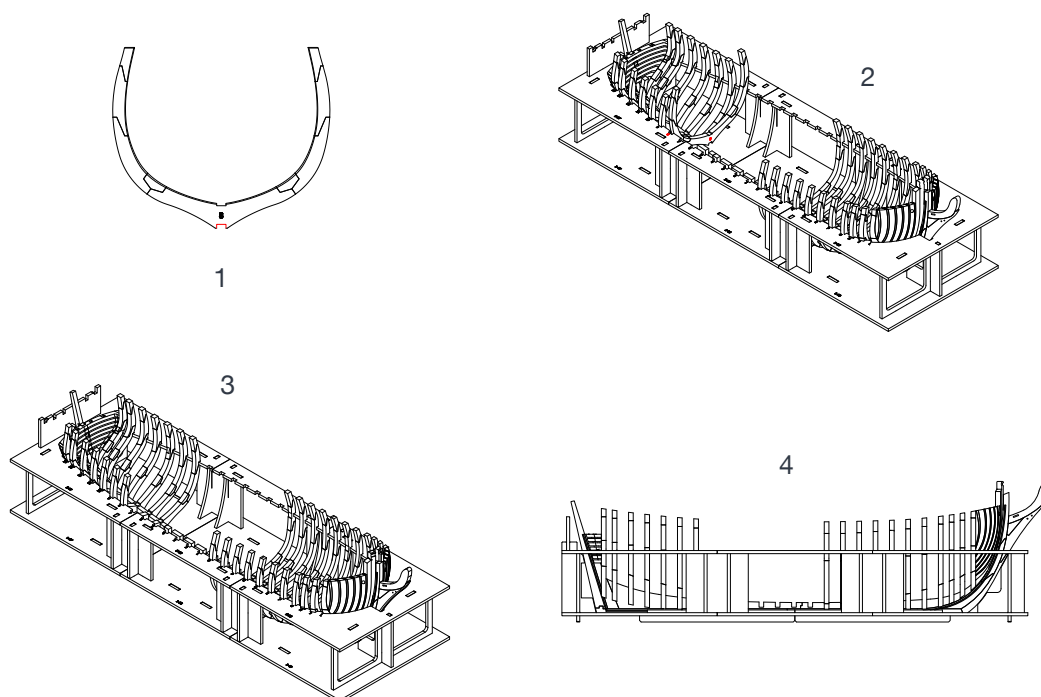
26



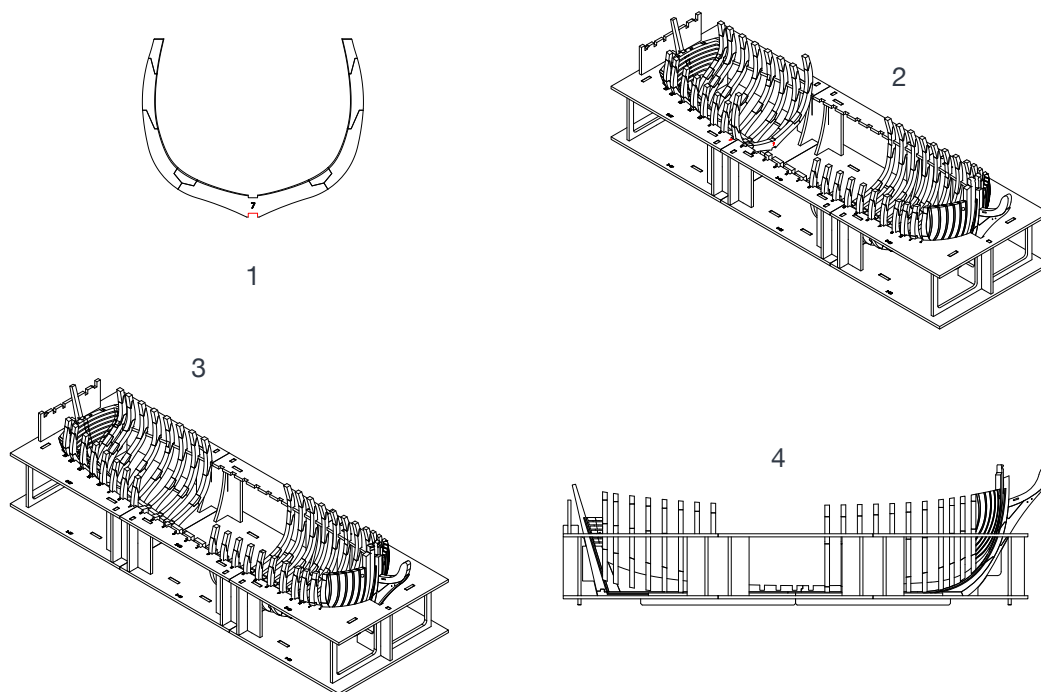
27



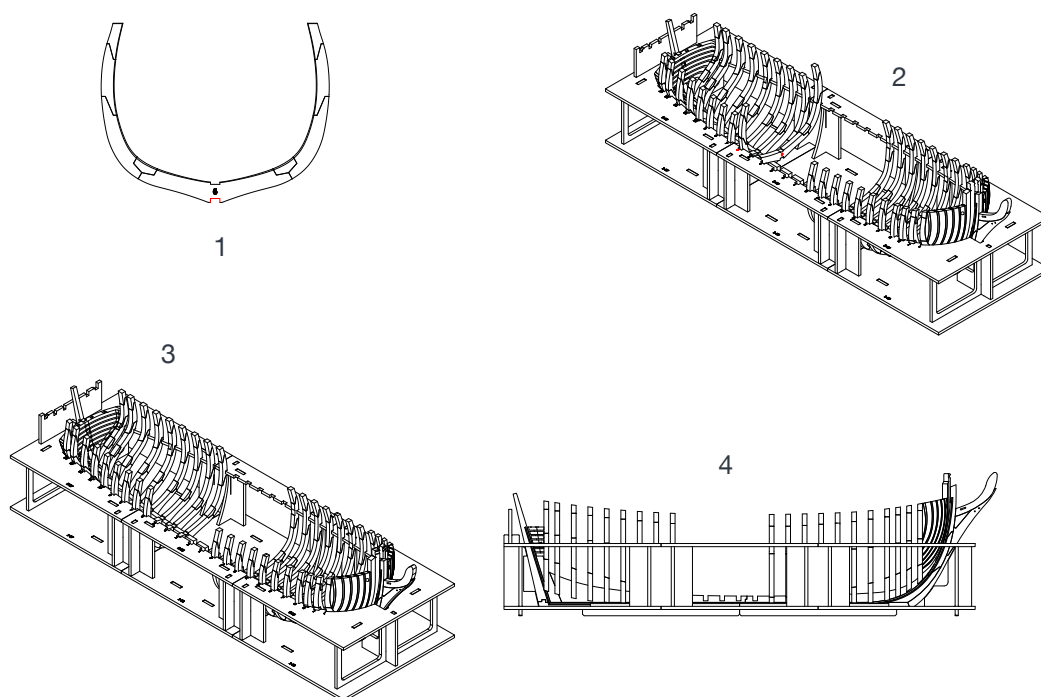
28



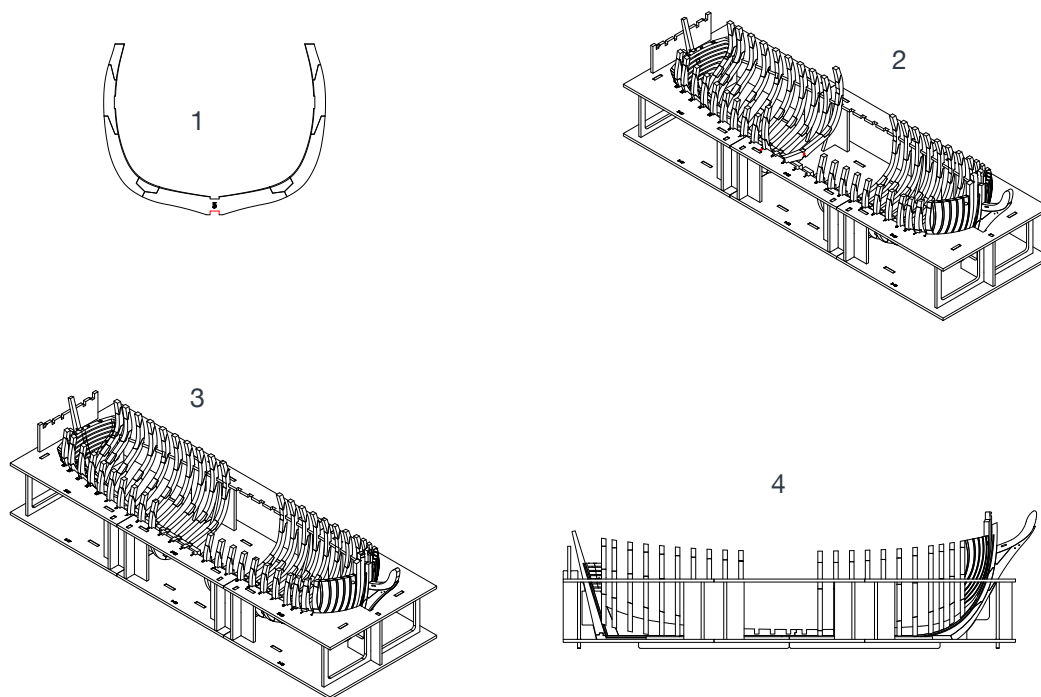
29



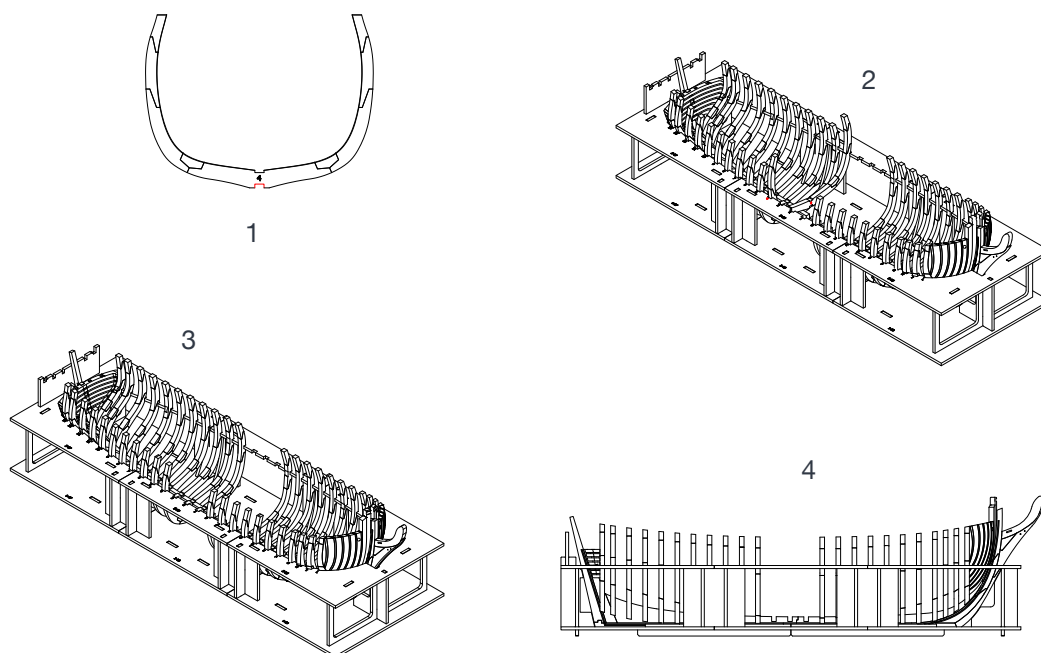
30



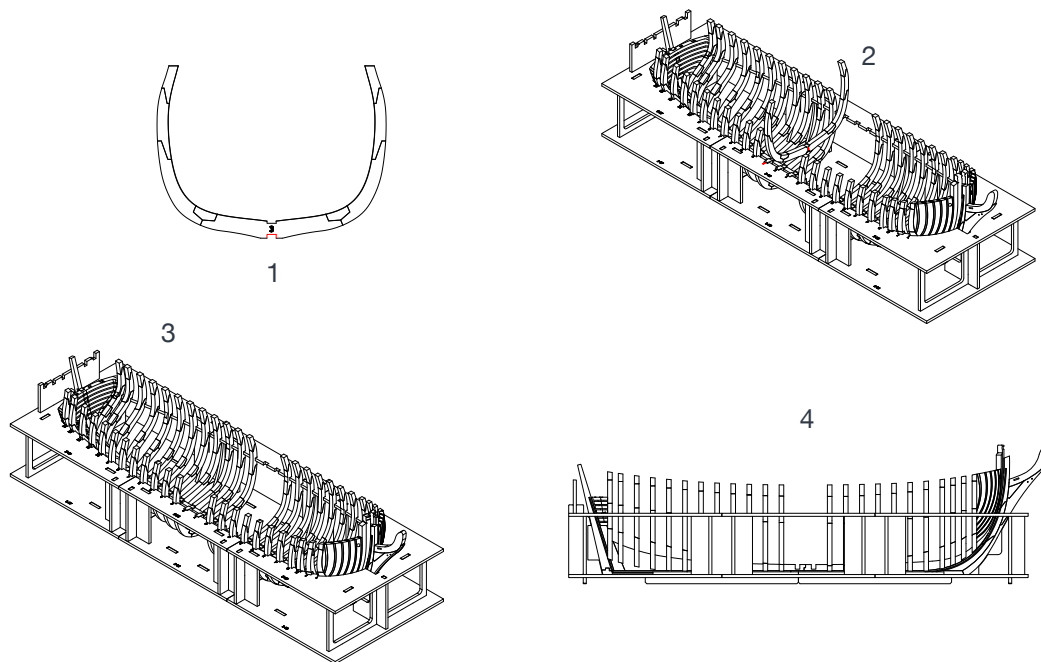
31



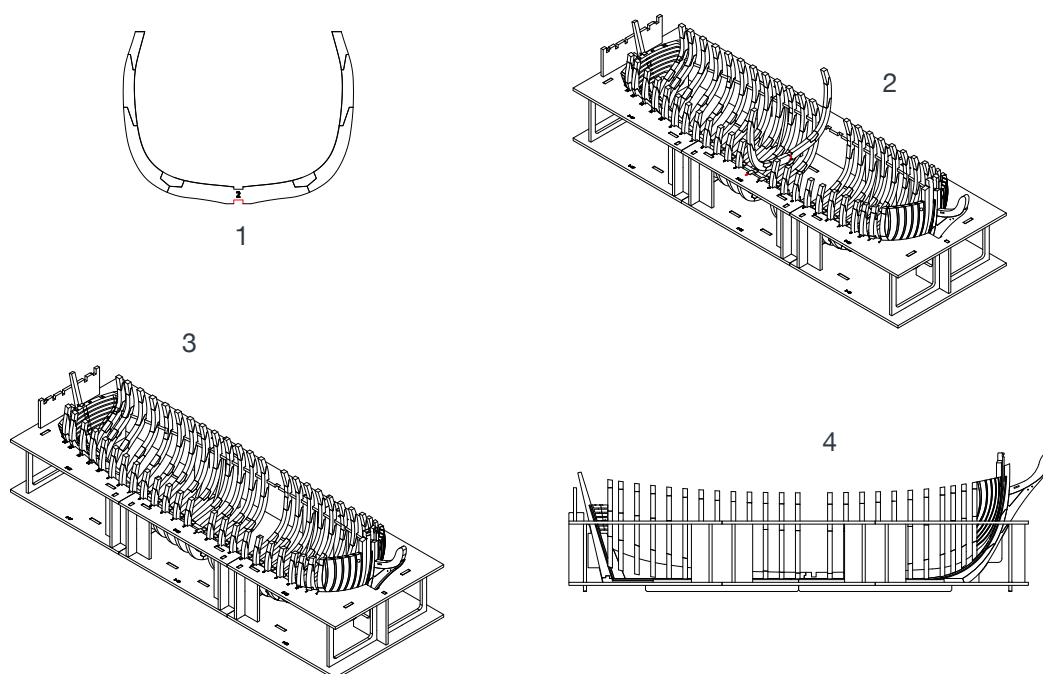
32



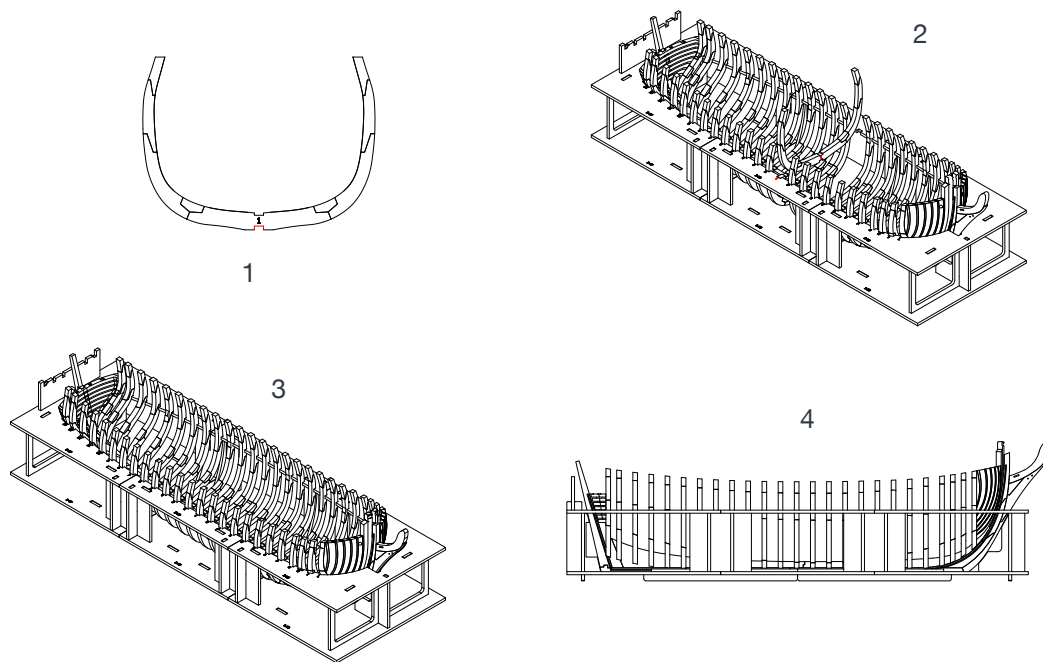
33



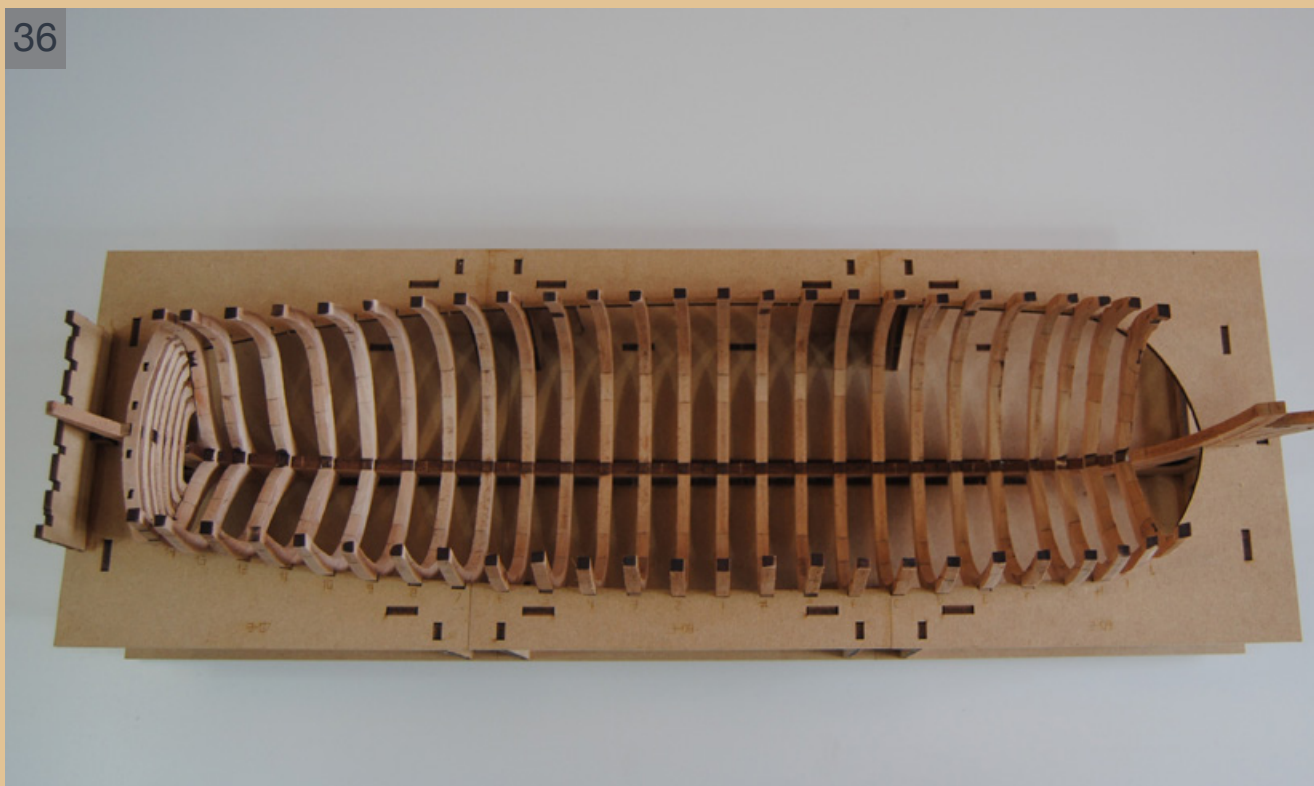
34



35



36



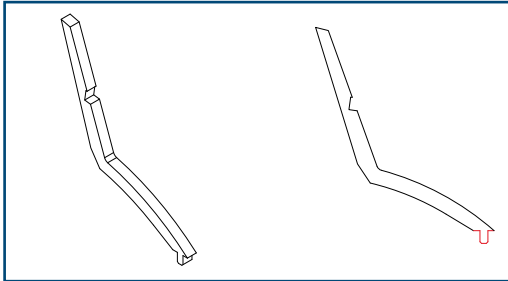
36 All the frames correctly positioned.

PHASE 48

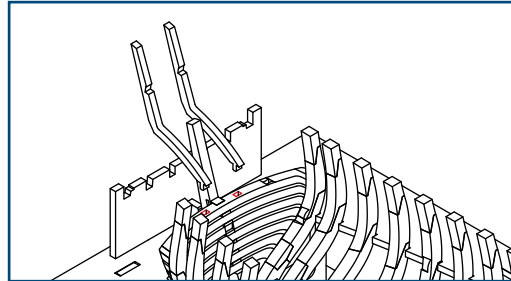
KEEL 3

1

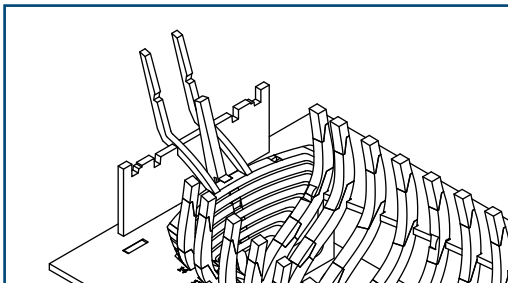
1



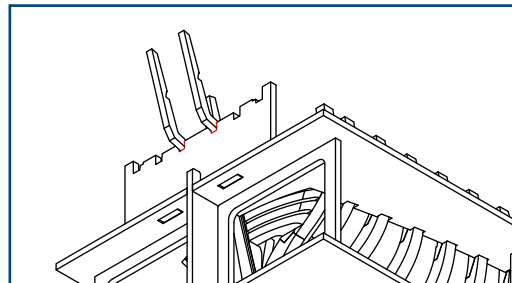
2



3



4

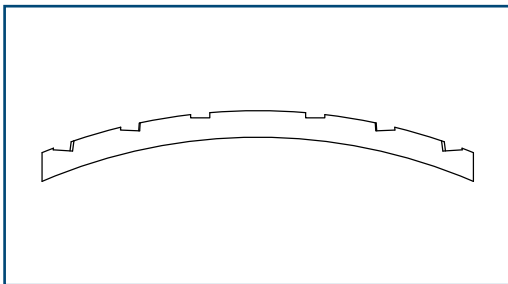


1

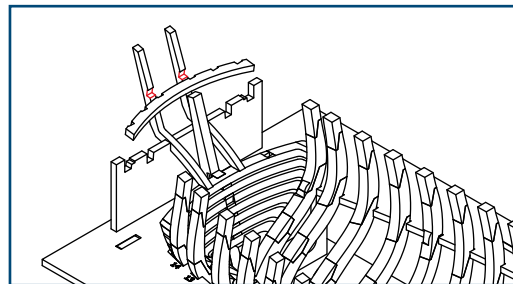
Detach pieces C and D from tablet 5-07 (picture 1). Apply a drop of glue to the holes highlighted in red in picture 2 and position pieces C and D as shown. **BE CAREFUL:** do not apply glue to the seatings highlighted in red in picture 4.

2

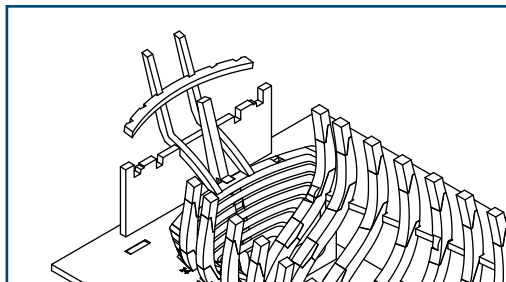
1



2



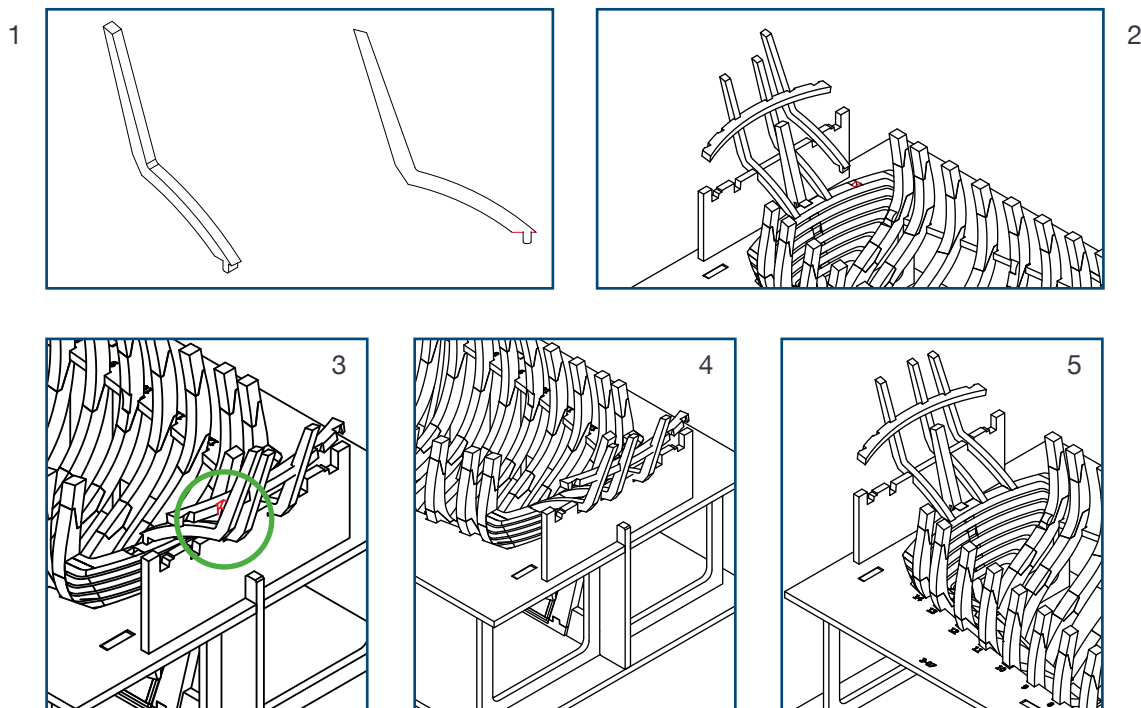
3



2

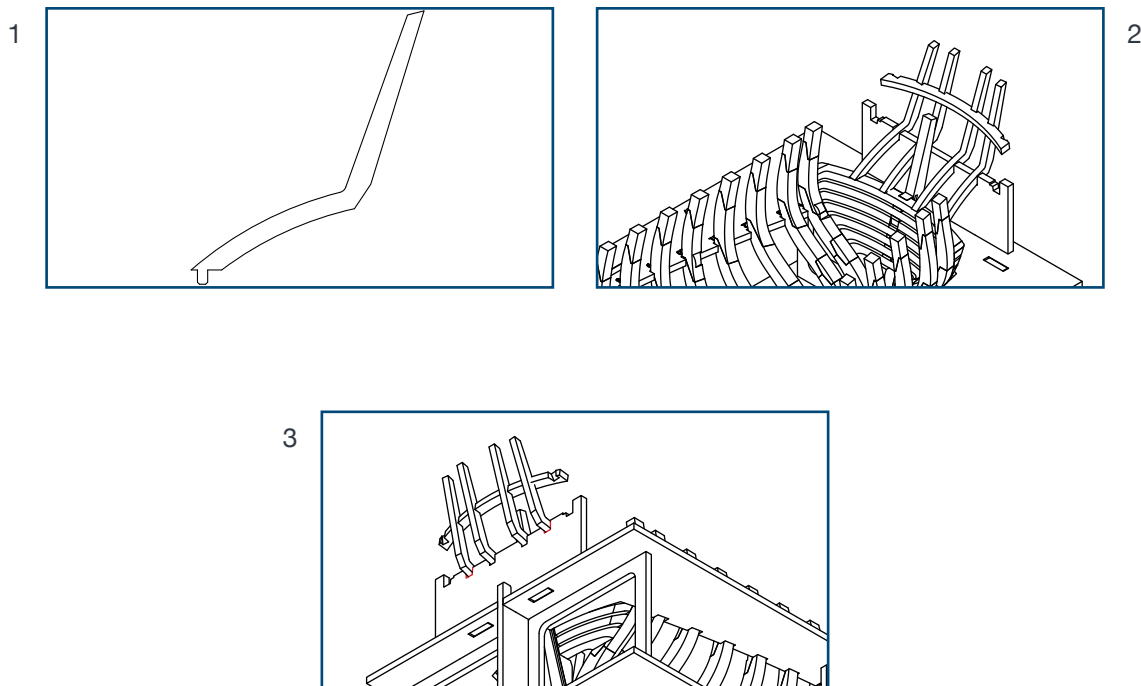
Detach piece A (picture 1) from tablet 5-07. Apply a drop of glue to the seatings highlighted in red in picture 2 and position piece A.

3



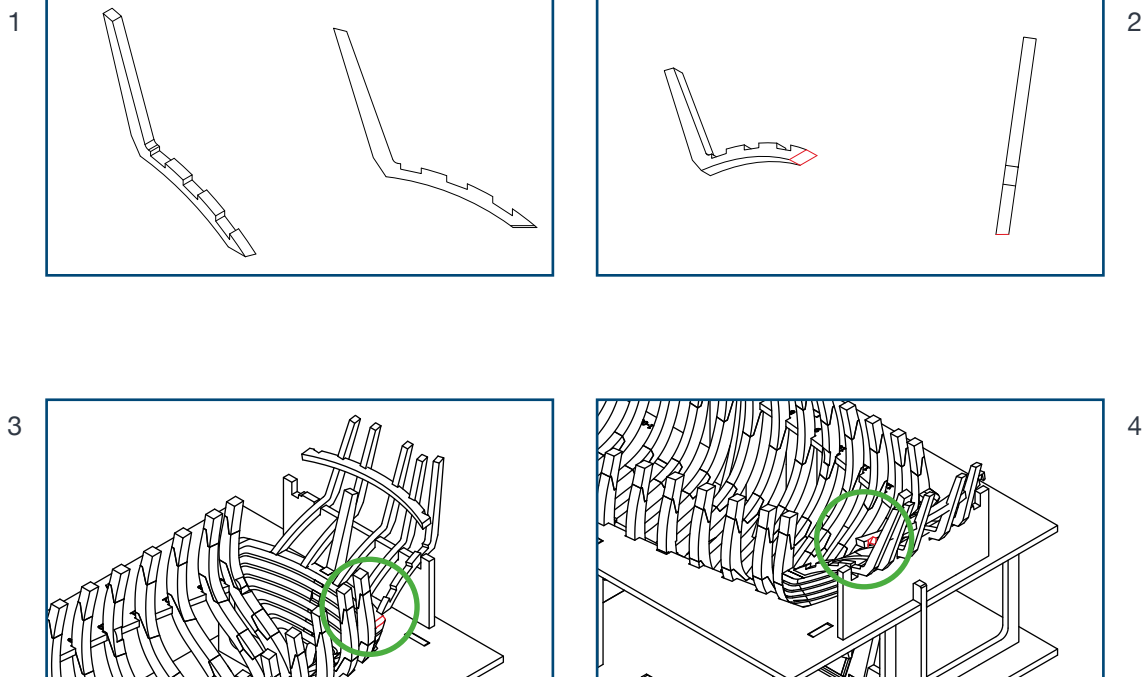
- 3 Detach piece D (picture 1) from tablet 5-08.
Apply a drop of glue to the seatings highlighted in red in pictures 2 and 3 and position part D.

4



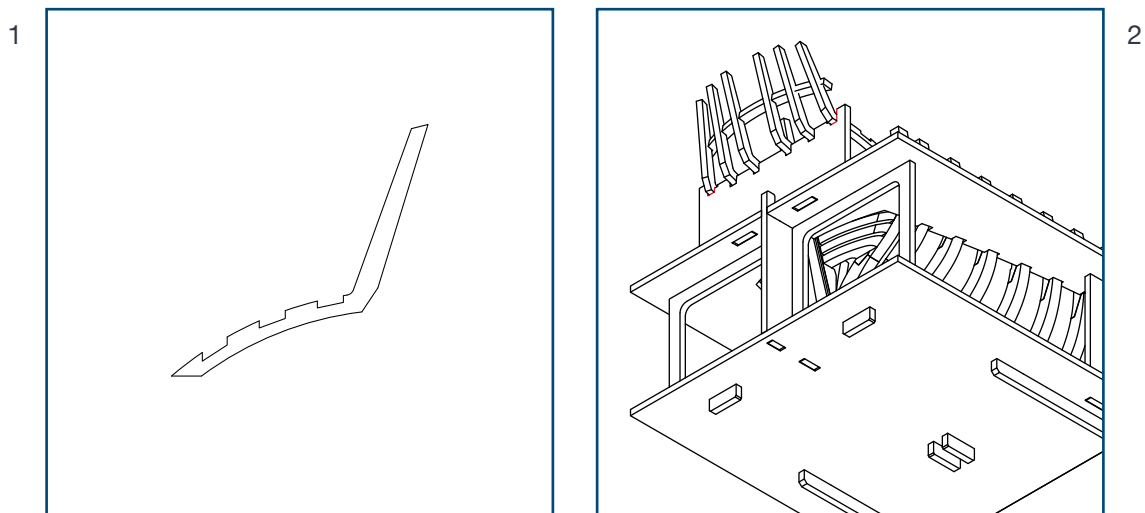
- 4 Detach piece C from tablet 5-08 and repeat, on the other side, the procedure described in the previous step.

5



- 5 Detach piece C (picture 1) from tablet 6-07. Gently file the end that is highlighted in red in picture 2 to create an inclined plane; do some assembly tests and continue filing until you have obtained the optimal result. Apply a drop of glue to the seatings highlighted in red in pictures 3 and 4 and then position piece C.

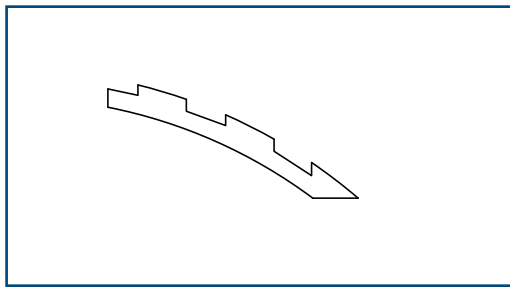
6



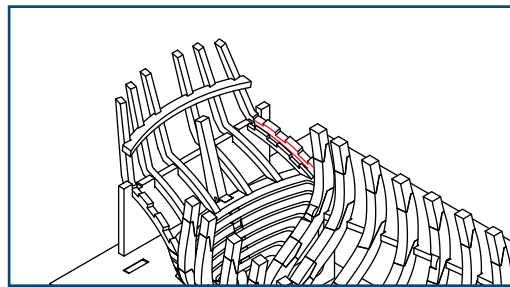
- 6 Detach piece B from tablet 6-07 and repeat, on the other side, the procedure described in the previous step.

7

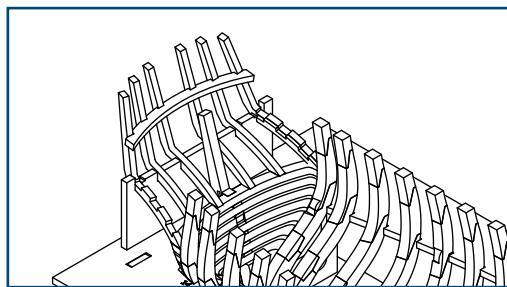
1



2



3

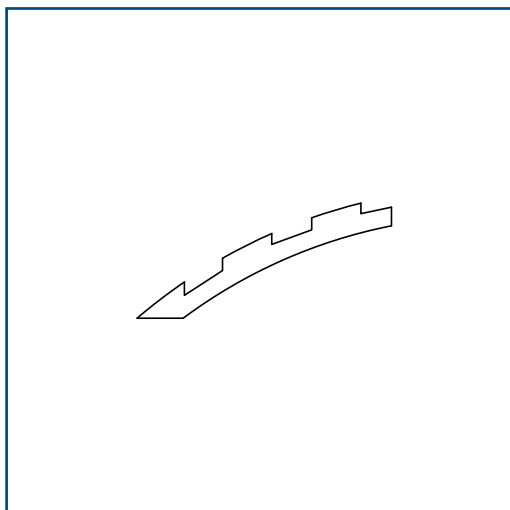


7

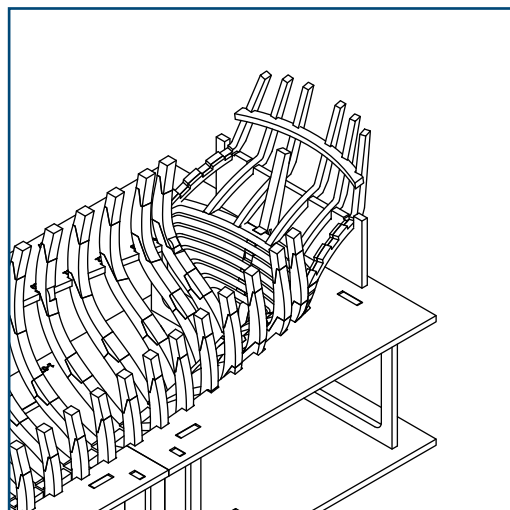
Detach piece A (picture 1) from tablet 6-09 and glue it as shown in pictures 2 and 3.

8

1



2



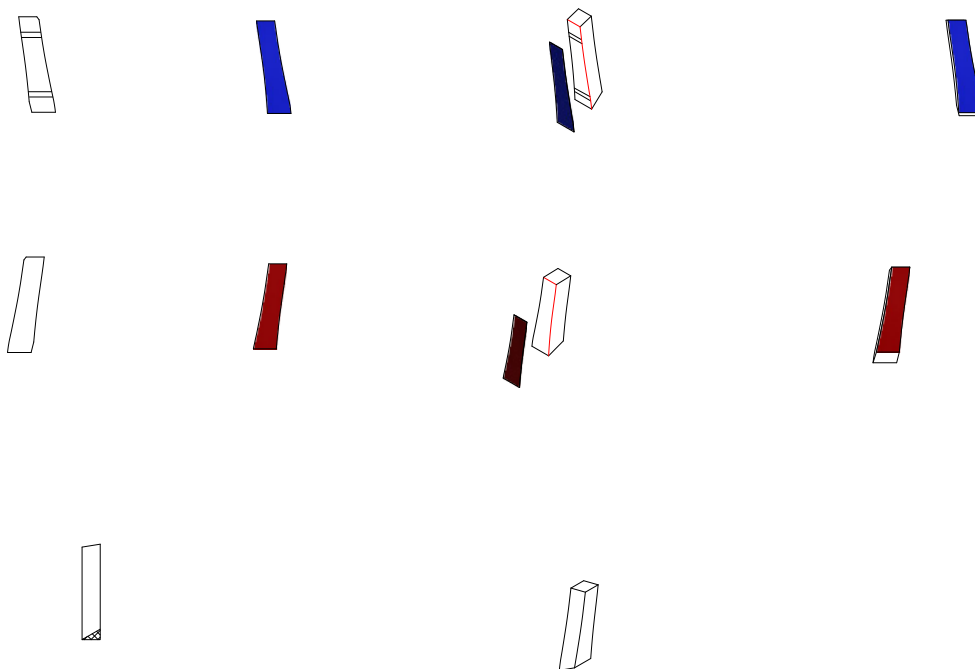
8

Detach piece B (picture 1) from tablet 6-09 and glue it as shown in picture 2.

PHASE 49

STERN FRAMES

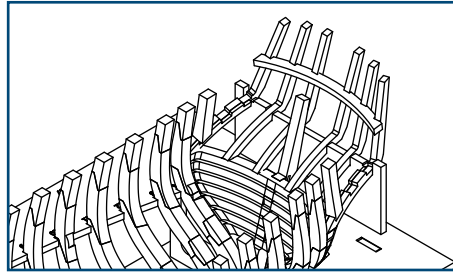
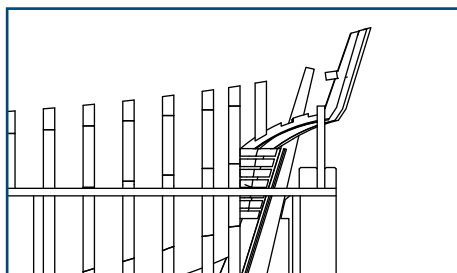
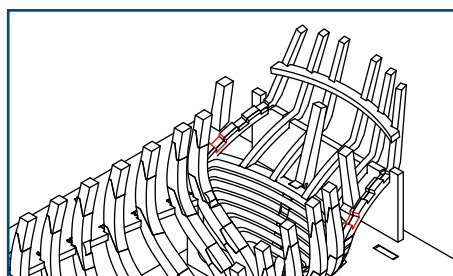
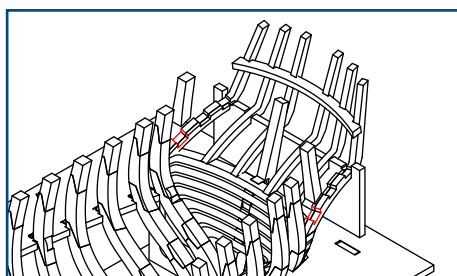
1



1

Detach both pieces of stern frame 15 from tablet 6-04.
Print its related 1:1 scale templates on an A4 sheet and glue them on both sides of the pieces as shown.
File the lower part of both pieces, following the profile of the templates.

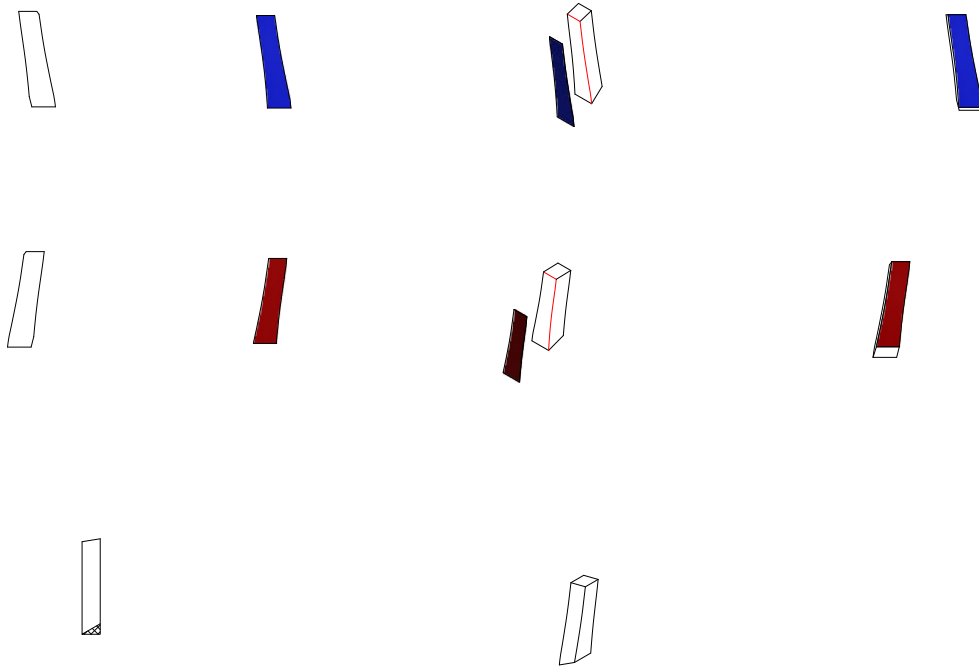
2



2

Apply a little glue into the seatings highlighted in red in the illustrations, and glue both pieces of stern frame 15.
Make sure that both pieces of this frame are perfectly vertical.

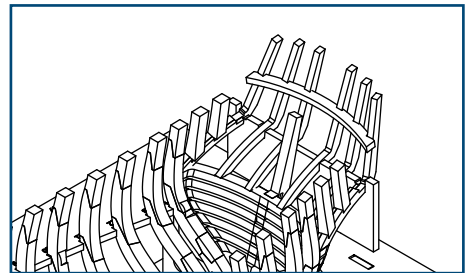
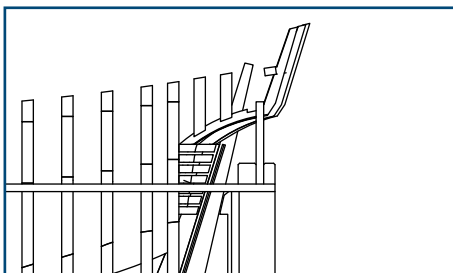
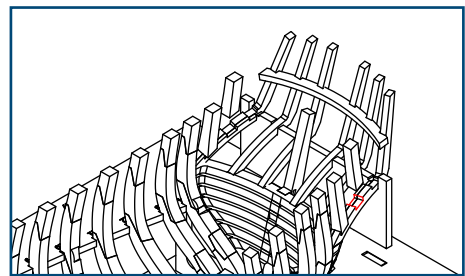
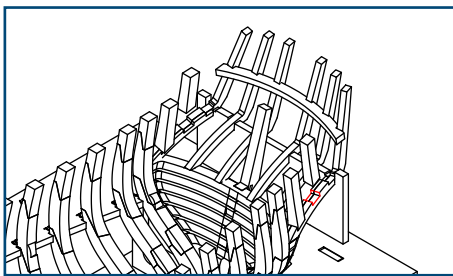
3



3

Detach both pieces of stern frame 16 from tablet 6-04.
Print its related 1:1 scale templates on an A4 sheet and glue them on both sides of the pieces as shown.
File the lower part of both pieces, following the profile of the templates.

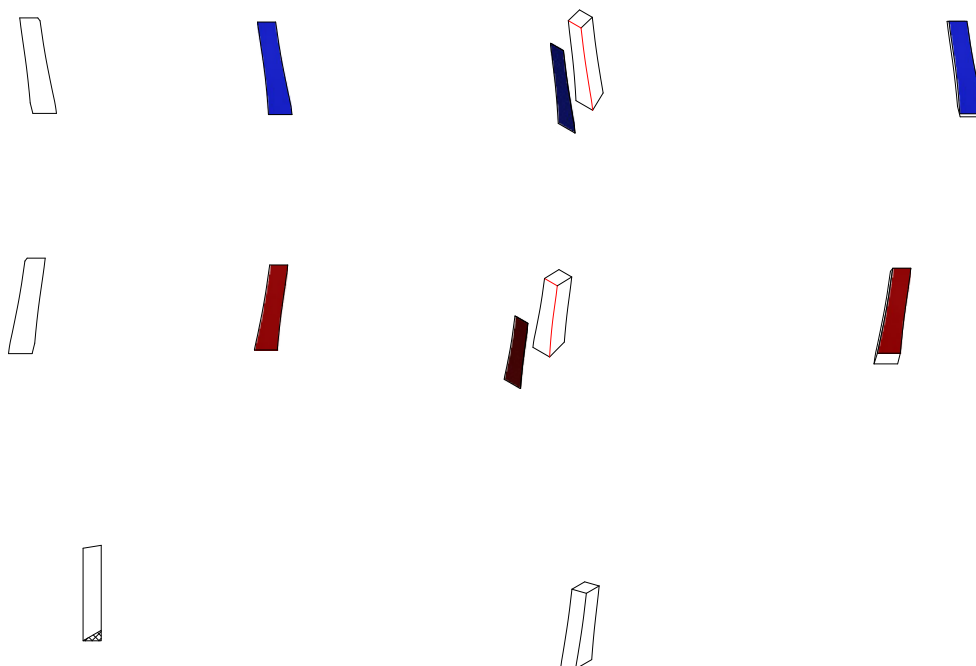
4



4

Apply a little glue into the seatings highlighted in red in the illustrations, and glue both pieces of stern frame 16.
Make sure that both pieces of this frame are perfectly vertical.

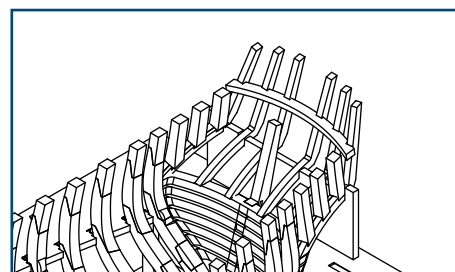
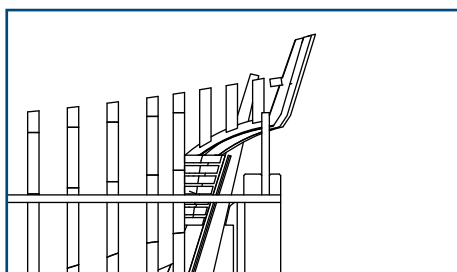
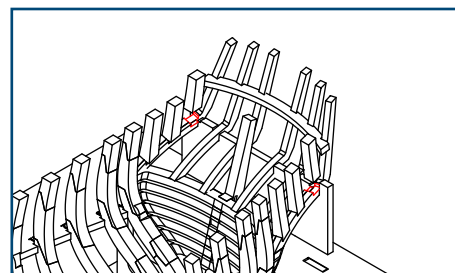
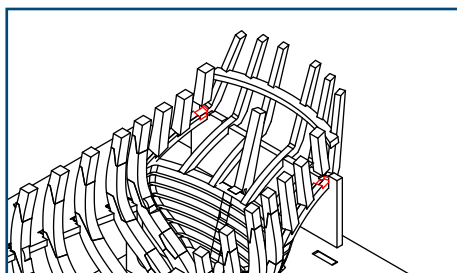
5



5

Detach both pieces of stern frame 17 from tablet 6-04.
Print its related 1:1 scale templates on an A4 sheet and glue them on both sides of the pieces as shown.
File the lower part of both pieces, following the profile of the templates.

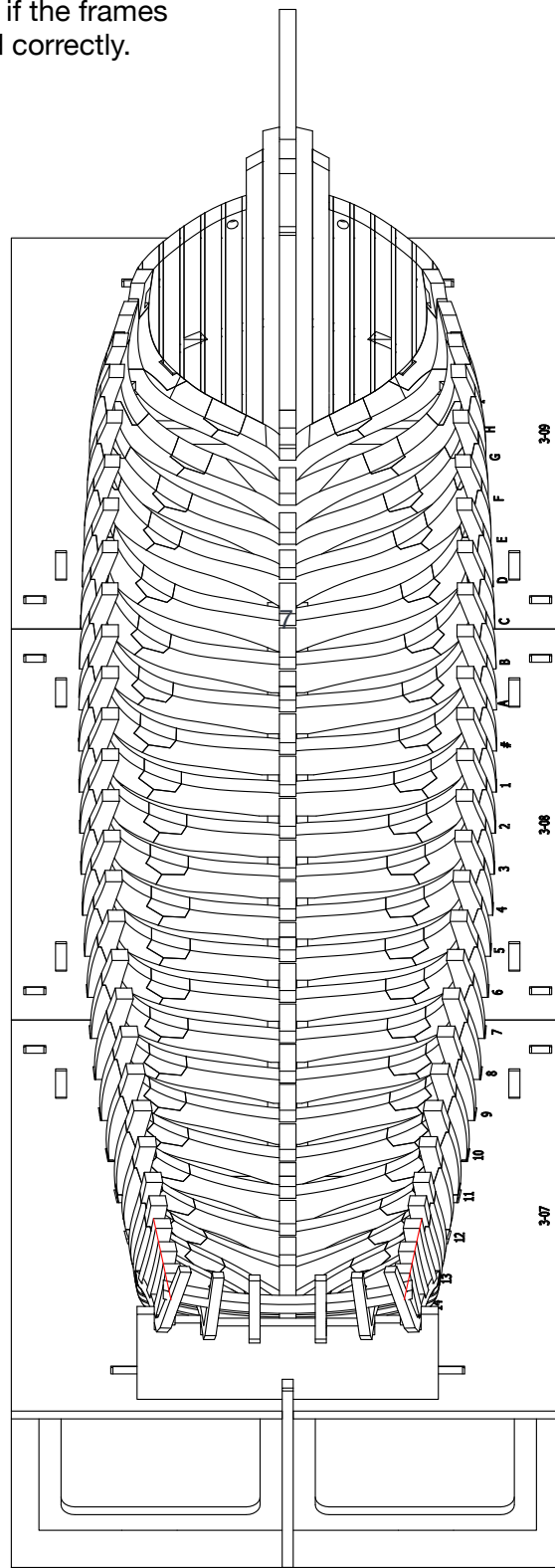
6



6

Apply a little glue into the seatings highlighted in red in the illustrations, and glue both pieces of stern frame 17.
Make sure that both pieces of this frame are perfectly vertical.

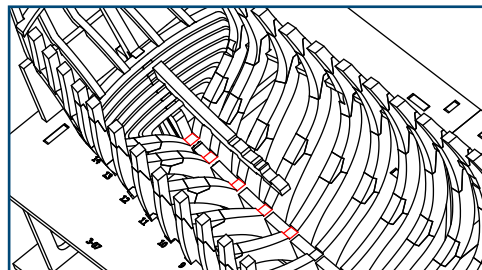
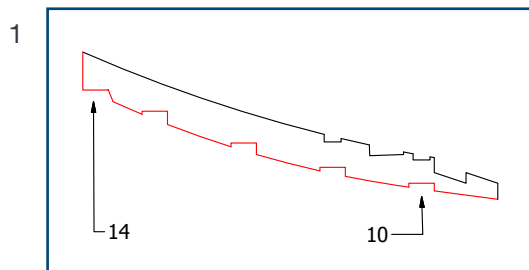
See the picture to check if the frames 15, 16 and 17 are placed correctly.



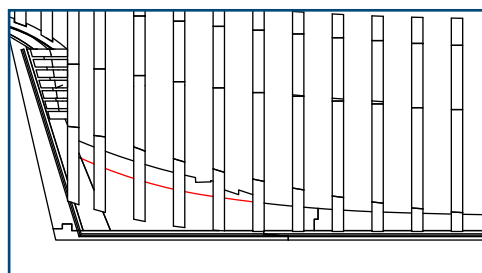
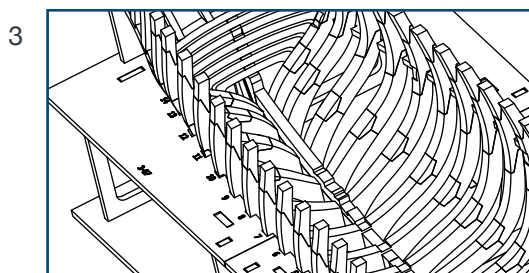
PHASE 50

KEELSON

1



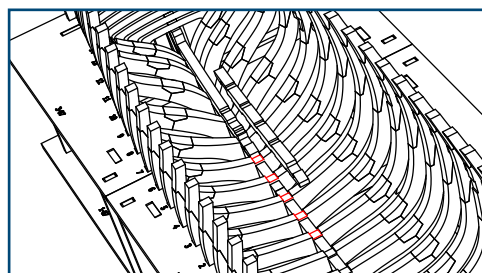
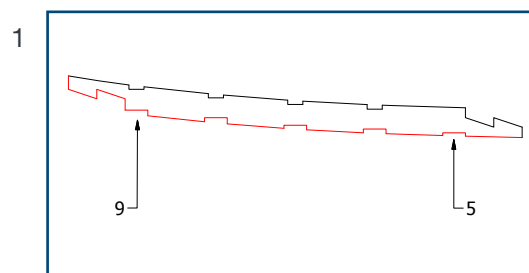
2



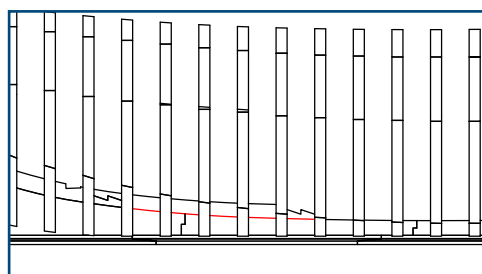
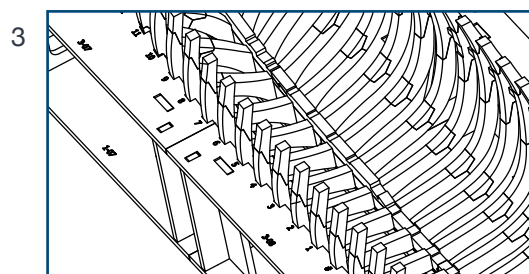
4

- 1 Detach piece PM1 from tablet 6-05 and apply glue over the entire profile that is highlighted in red in picture 1. Position the piece as shown, matching the joints of the frames from 14 to 10. Make sure the piece adheres perfectly to the keel.

2



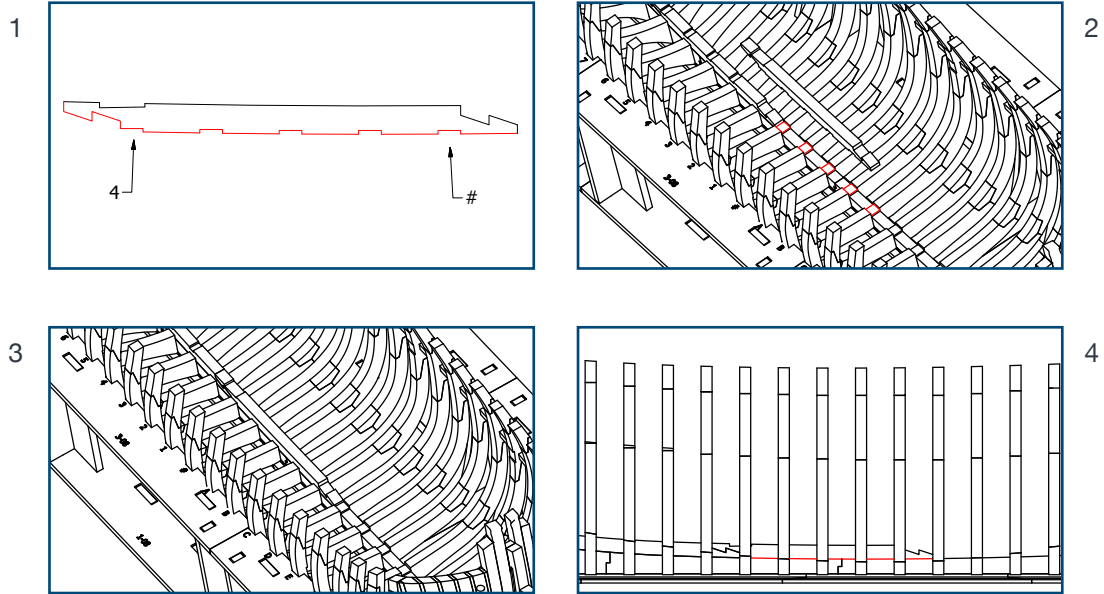
2



4

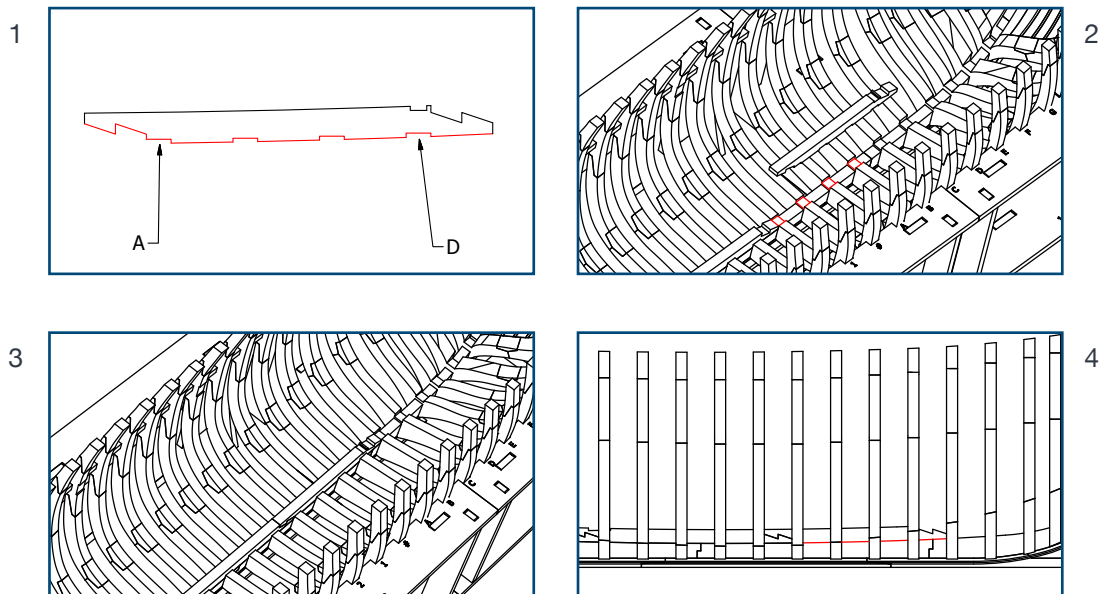
- 2 Detach piece PM2 from tablet 6-05 and apply glue over the entire profile that is highlighted in red in picture 1. Position the piece as shown, matching the joints of the frames from 9 to 5. Make sure the piece adheres perfectly to the keel.

3



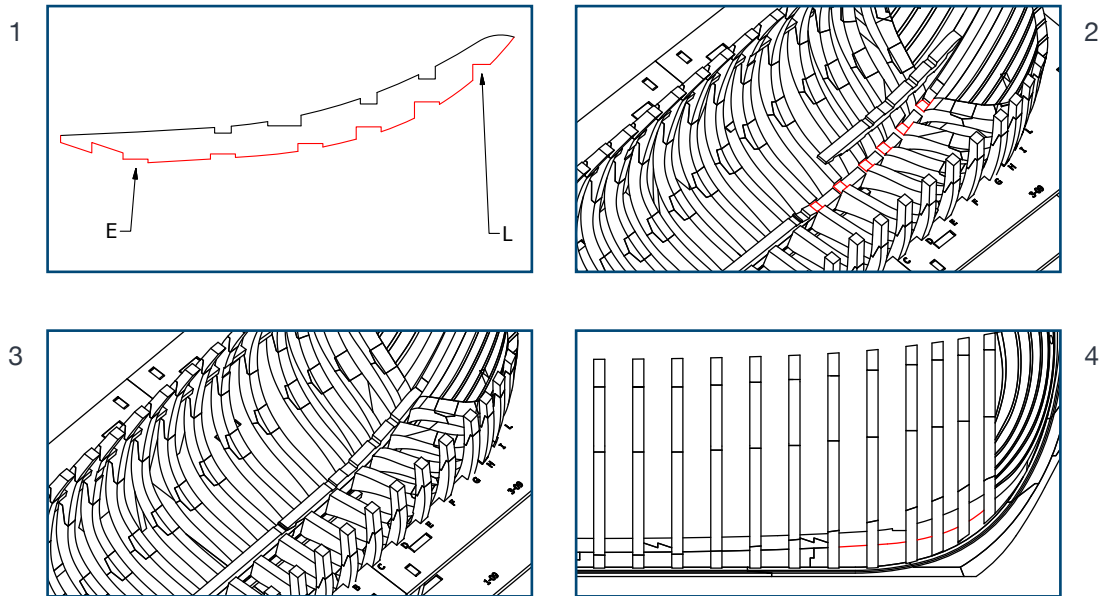
- 3 Detach piece PM3 from tablet 6-05 and apply glue over the entire profile that is highlighted in red in picture 1. Position the piece as shown, matching the joints of the frames from 4 to #. Make sure the piece adheres perfectly to the keel.

4



- 4 Detach piece PM4 from tablet 6-05 and apply glue over the entire profile that is highlighted in red in picture 1. Position the piece as shown, matching the joints of the frames from A to D. Make sure the piece adheres perfectly to the keel.

5



- 5 Detach piece PM5 from tablet 6-05 and apply glue over the entire profile that is highlighted in red in picture 1. Position the piece as shown, matching the joints of the frames from E to L. Make sure the piece adheres perfectly to the keel.

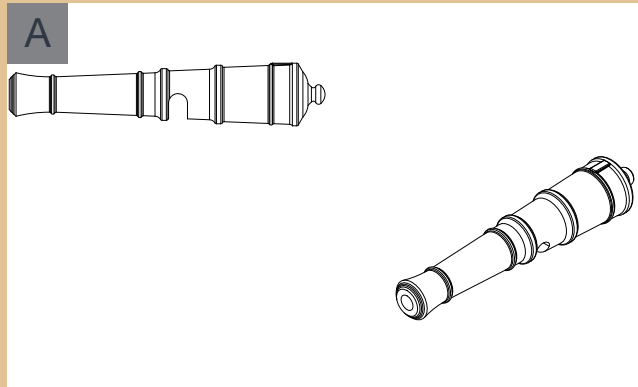
6



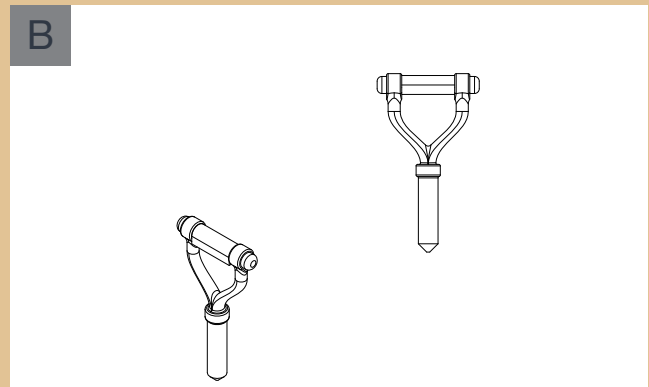
- 6 The hull is complete.

PHASE 51

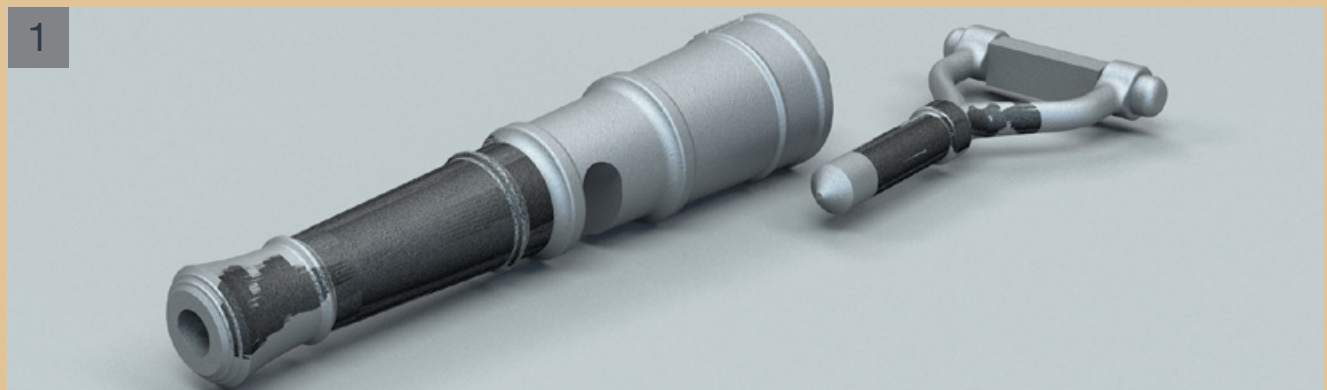
CULVERIN 06



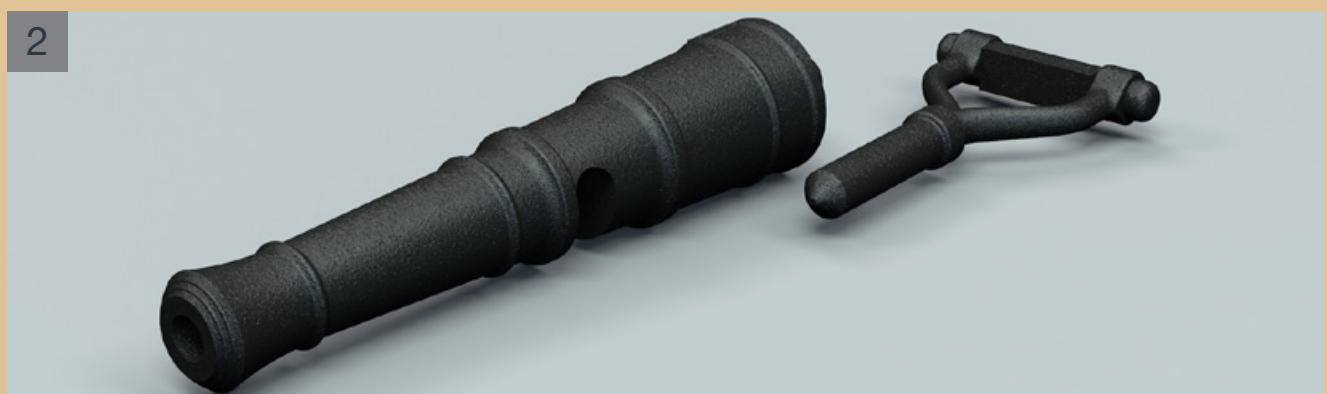
A Side and axonometric view of 1/2 pound culverin.



B Side and axonometric view of the 1/2 pound culverin fork.



1 Paint the culverin and fork with Gun Metal.



2 The painted culverin and fork. Do not assemble the culverin and the fork yet: this operation will be carried out later. Store the two pieces with care so as not to risk losing them.