

BUILD THE LEGENDARY

H.M.S.

BOUNTY

ADMIRALTY MODEL

PACK 07



BUILD THE LEGENDARY

H.M.S. BOUNTY

ADMIRALTY MODEL

PHASE

PAGE

52	Mast step 01	242
53	Mast step 02	246
54	Mast step 03	250
55	Orlop deck 01	254
56	Orlop deck 02	256
57	Orlop deck 03	258
58	Orlop deck 04	260
59	Orlop deck 05	262
60	Orlop deck 06	264

Design and production by Incipit srl

Assembly guide edited by Milanoedit srl - www.milanoedit.com

Published in Italy by De Agostini Publishing Italia S.p.A., 28100 Novara, Via G. da Verrazano 15

All rights reserved © 2020.

UNSUITABLE FOR CHILDREN UNDER 14. THE PRODUCT IS NOT A TOY
AND MUST BE USED UNDER ADULT SUPERVISION.

PARTS MAY BE DIFFERENT FROM THOSE PICTURED

BUILD THE LEGENDARY

H.M.S. BOUNTY

ADMIRALTY MODEL

PHASE

PAG.

61	Orlop deck 07	266
62	Orlop deck 08	268
63	Orlop deck 09	270
64	Orlop deck 10	272
65	Orlop deck planking 01	274
66	Orlop deck planking 02	276
67	Lateral support 01	278
68	Lateral support 02	281

Design and production by Incipit srl

Assembly guide edited by Milanoedit srl - www.milanoedit.com

Published in Italy by De Agostini Publishing Italia S.p.A., 28100 Novara, Via G. da Verrazano 15

All rights reserved © 2020.

UNSUITABLE FOR CHILDREN UNDER 14. THE PRODUCT IS NOT A TOY

AND MUST BE USED UNDER ADULT SUPERVISION.

PARTS MAY BE DIFFERENT FROM THOSE PICTURED

ASSEMBLY INSTRUCTIONS

PACK 07

List of components

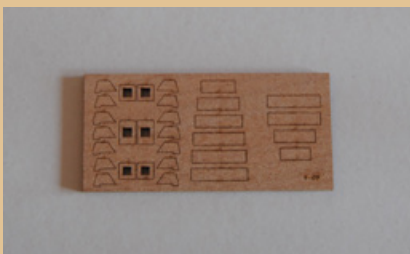
Mast feet, beams, and supports:

wooden tablet 7-01
wooden tablet 7-02
wooden tablet 7-03
wooden tablet 7-04
wooden tablet 7-05
wooden tablet 7-06
wooden tablet 7-07

Strips:

100 strips type A (1.5 x 6 x 250 mm)
16 strips type B (2 x 2 x 250 mm)

*** Note:** Store tablets 7-03, 7-04, the leftover parts of tablet 7-06, and all the leftover strips; you will be using them in the next packs.



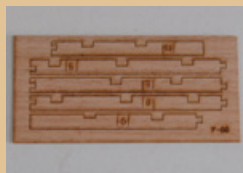
7-07



Strips



7-01



7-02



7-03



7-04



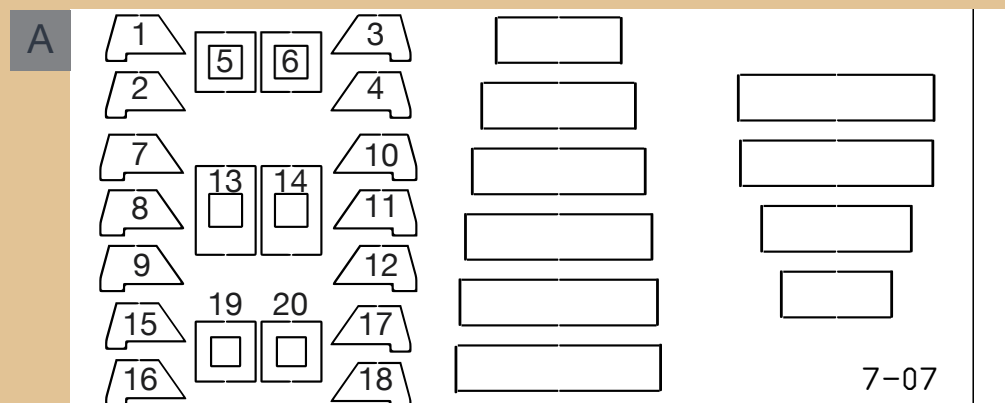
7-05



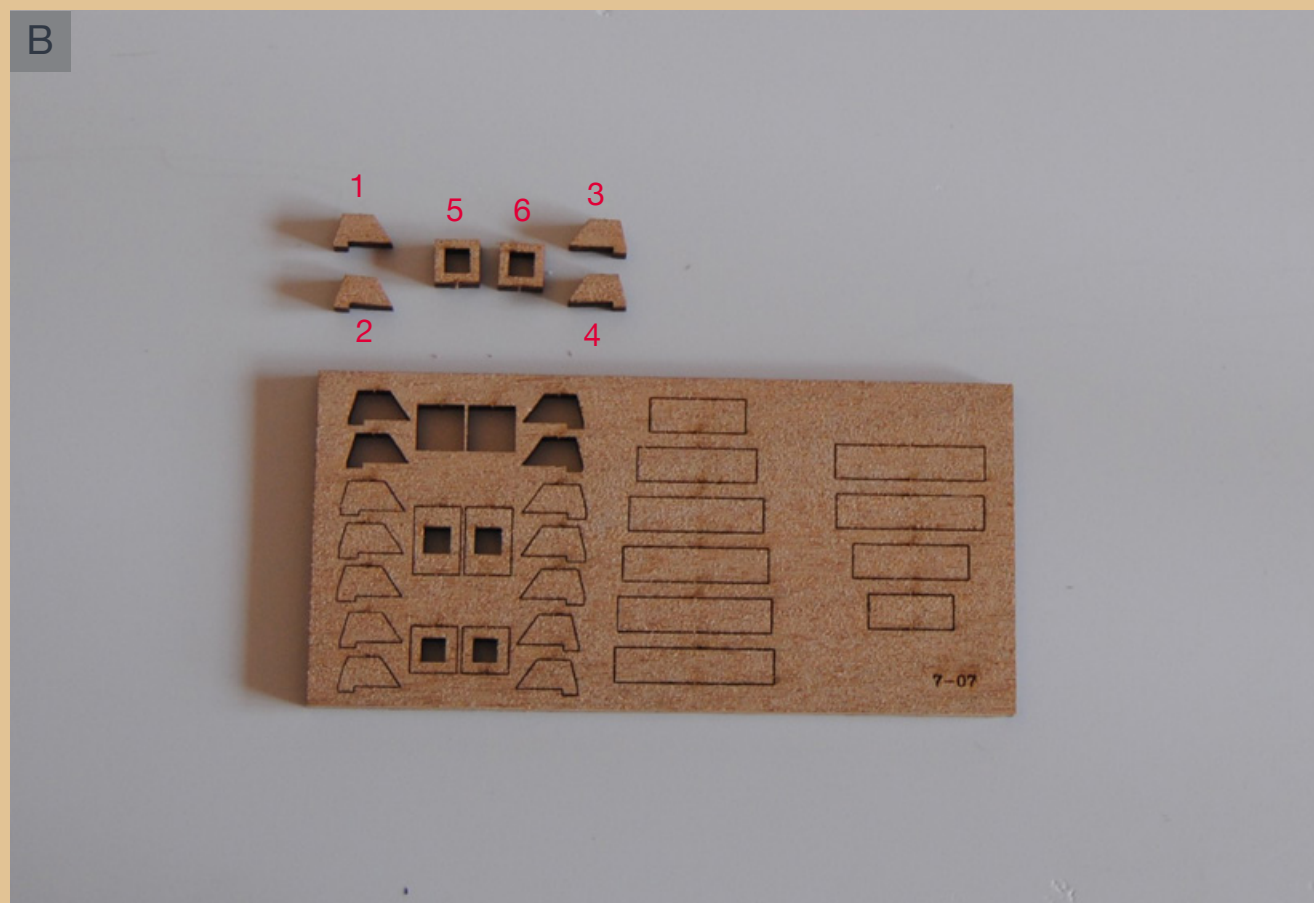
7-06

PHASE 52

MAST STEP 01

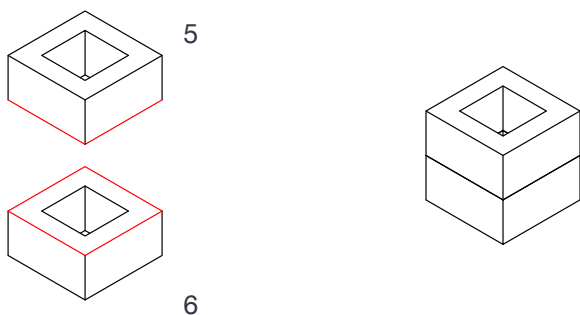


A Drawing of tablet 7-07



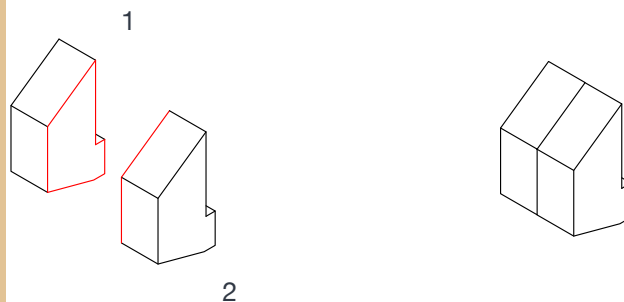
B Detach the pieces 1, 2, 3, 4, 5 and 6 from wooden tablet 7-07.

1



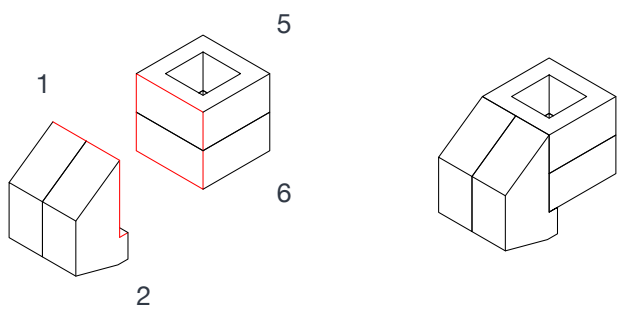
1 Join pieces 5 and 6 by applying a drop of glue to the parts highlighted in red.

2



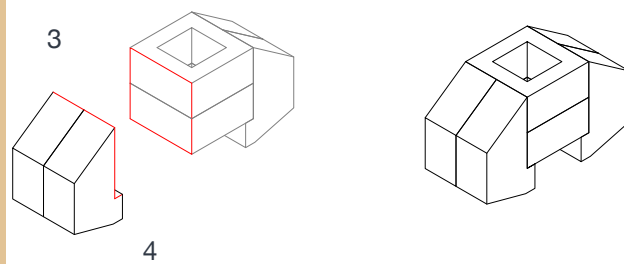
2 In the same way, also join pieces 1 and 2.

3



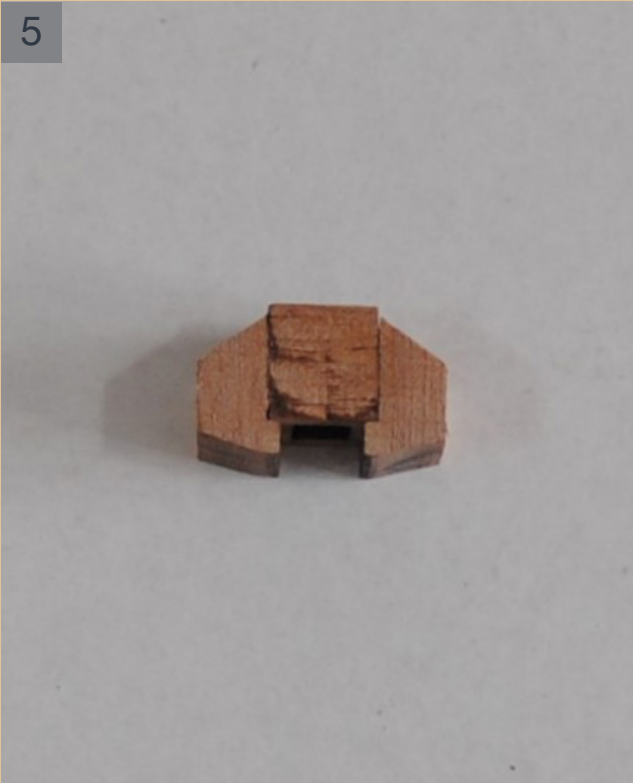
3 Now join the two assemblies using a small amount of glue.

4



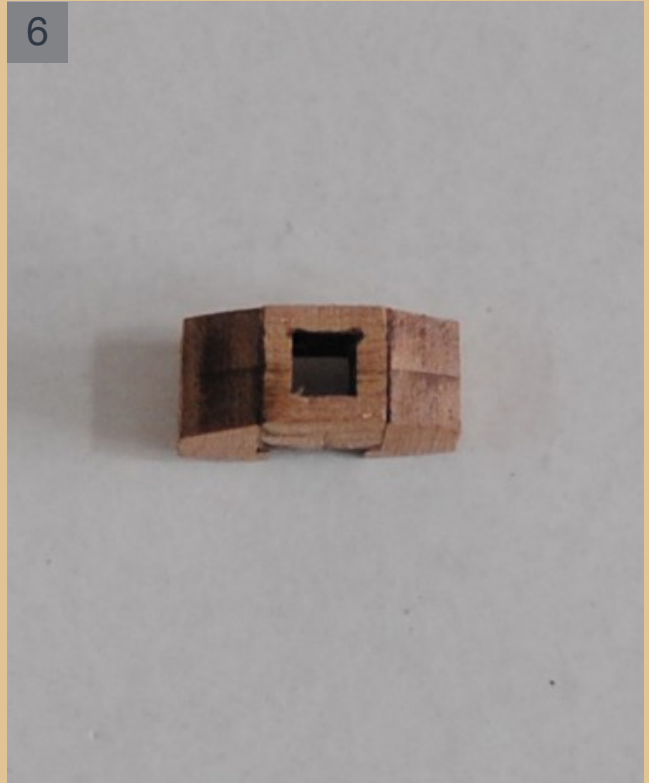
4 Repeat the same operations of steps 2 and 3 to join pieces 3 and 4.

5



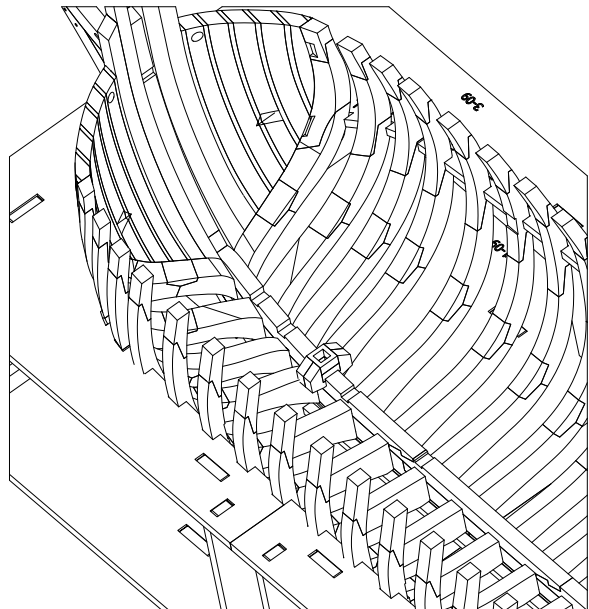
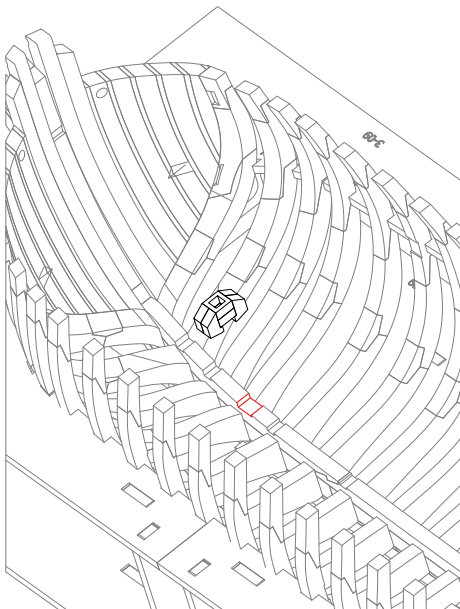
5 The first mast step correctly assembled (side view).

6



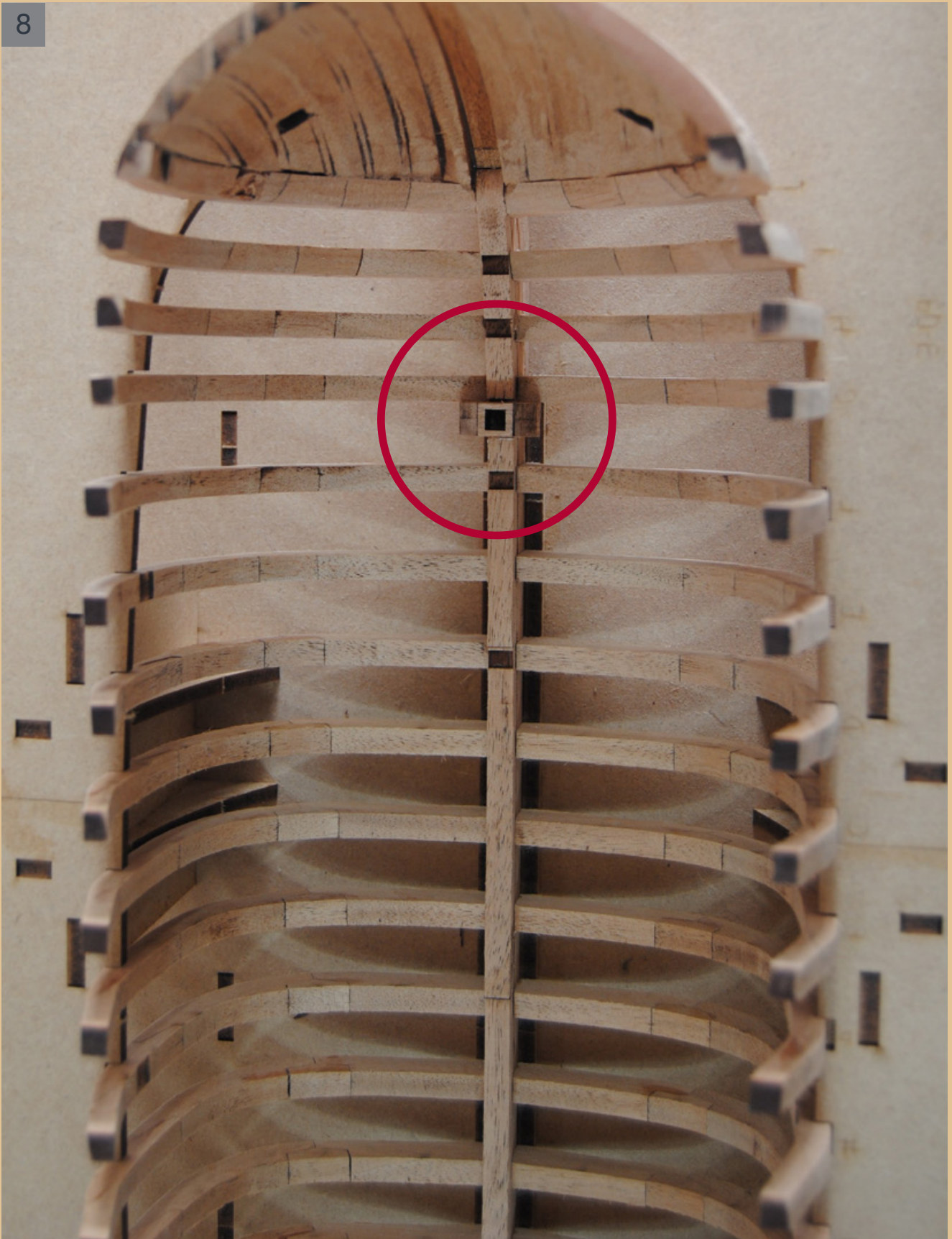
6 The first mast step correctly assembled (top view).

7



7 Glue the mast step in the position shown, by applying a drop of glue to the part highlighted in red.

8

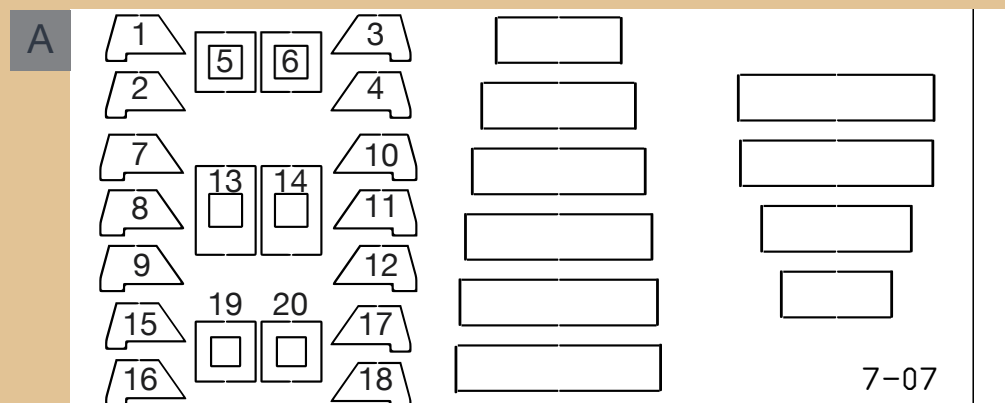


8

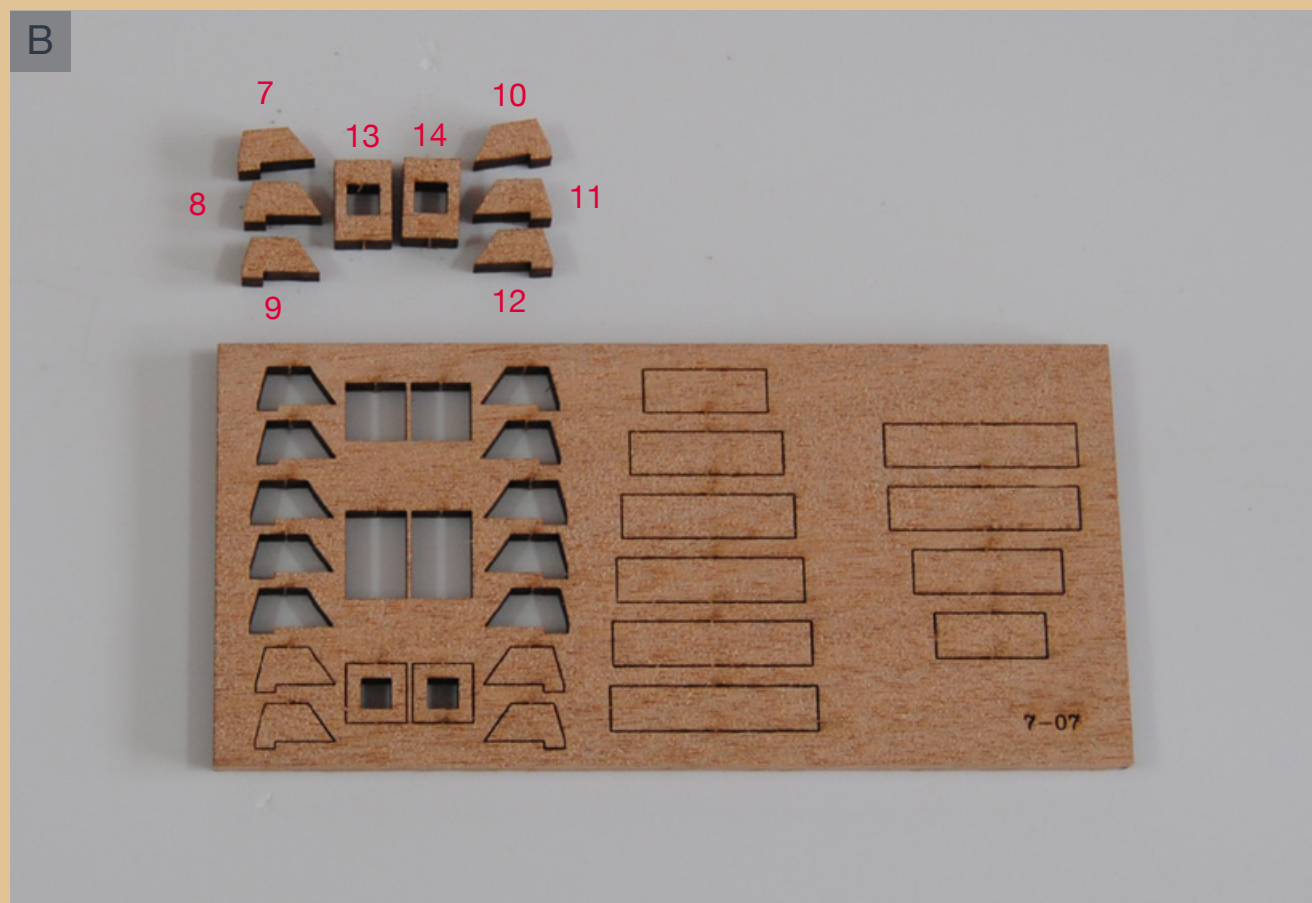
The first mast step correctly positioned.

PHASE 53

MAST STEP 02

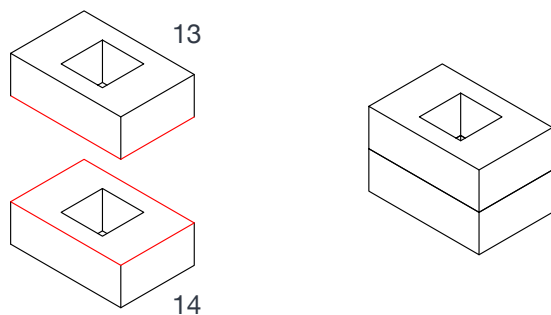


A Drawing of tablet 7-07



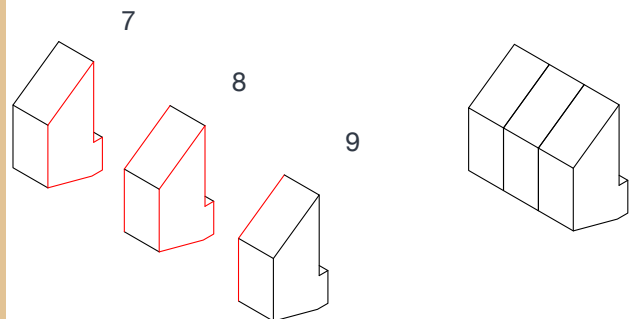
B Detach the pieces 7, 8, 9, 10, 11, 12, 13 and 14 from wooden tablet 7-07.

1



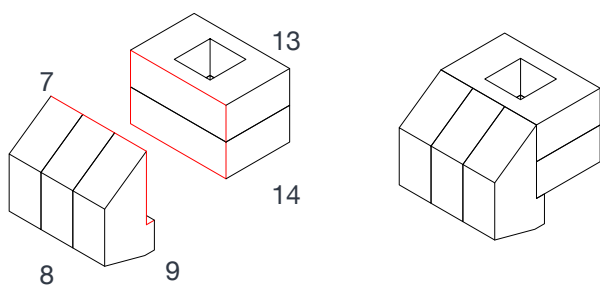
1 Join pieces 13 and 14 by applying a drop of glue to the parts highlighted in red.

2



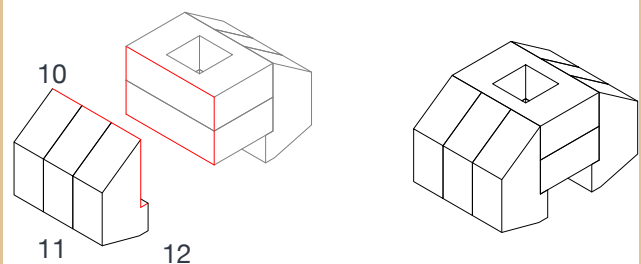
2 In the same way, also join pieces 7, 8 and 9.

3



3 Now join the two assemblies using a small amount of glue.

4



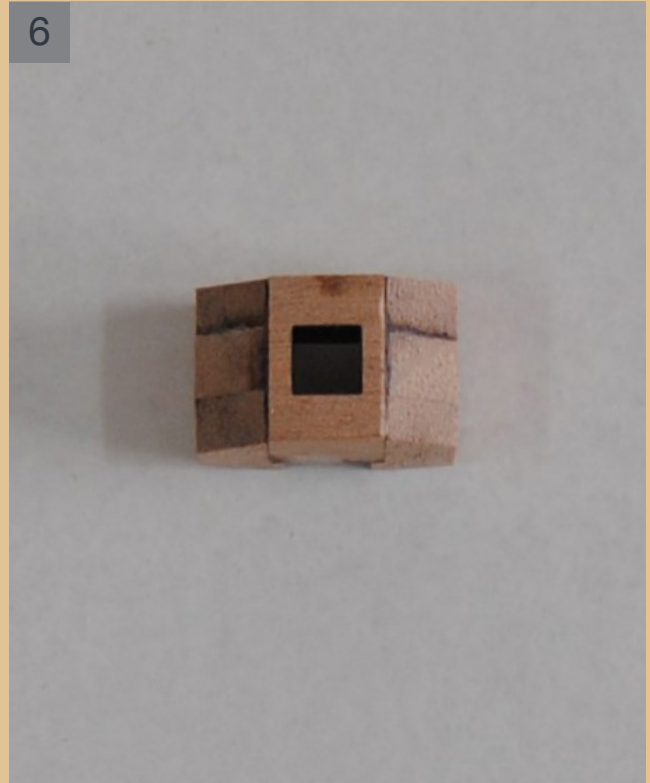
4 Repeat the same operations of steps 2 and 3 to join pieces 10, 11 and 12.

5



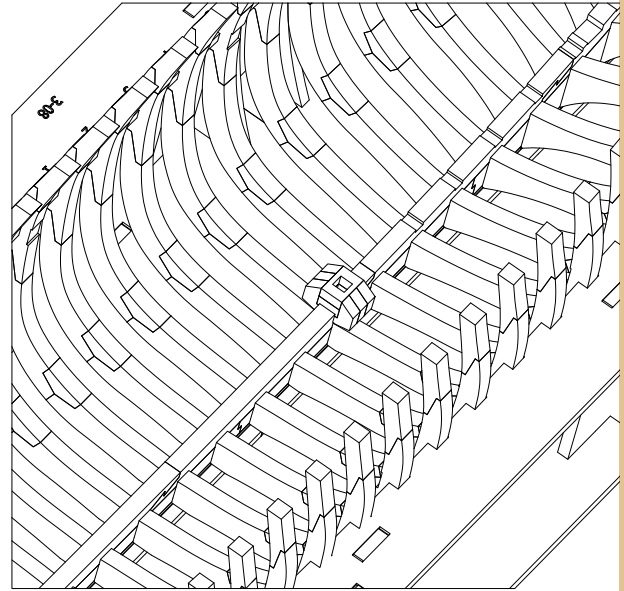
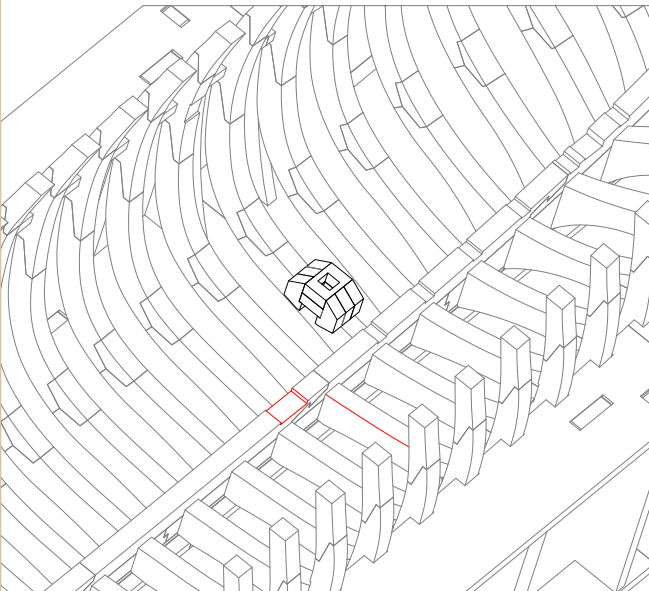
5 The second mast step correctly assembled (side view).

6

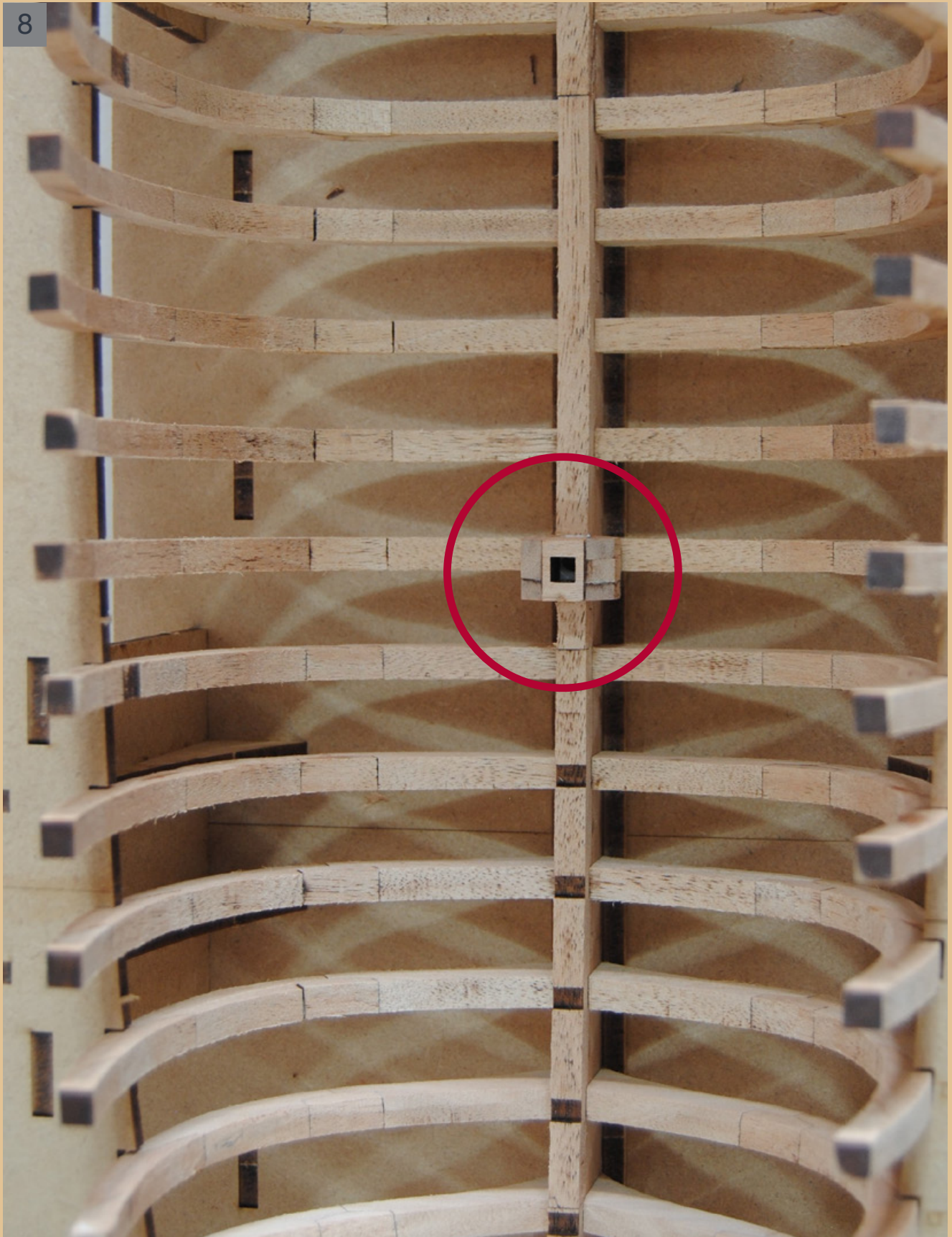


6 The second mast step correctly assembled (top view).

7



7 Glue the mast step in the position shown, by applying a drop of glue to the part highlighted in red.

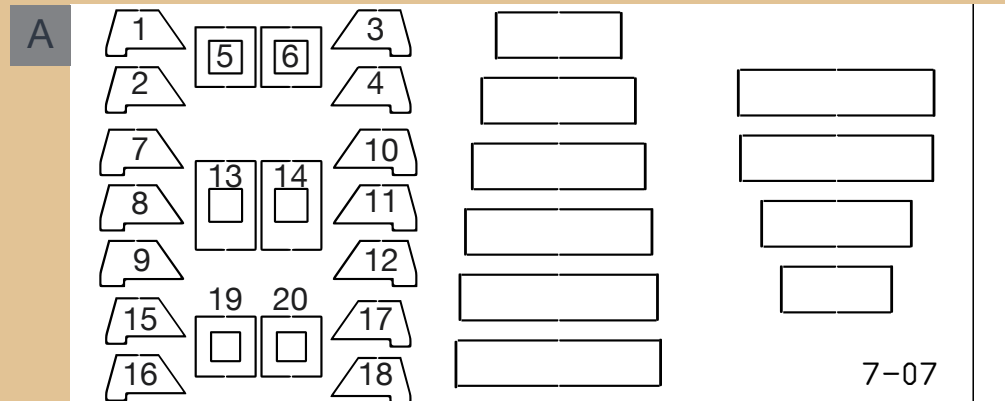


8

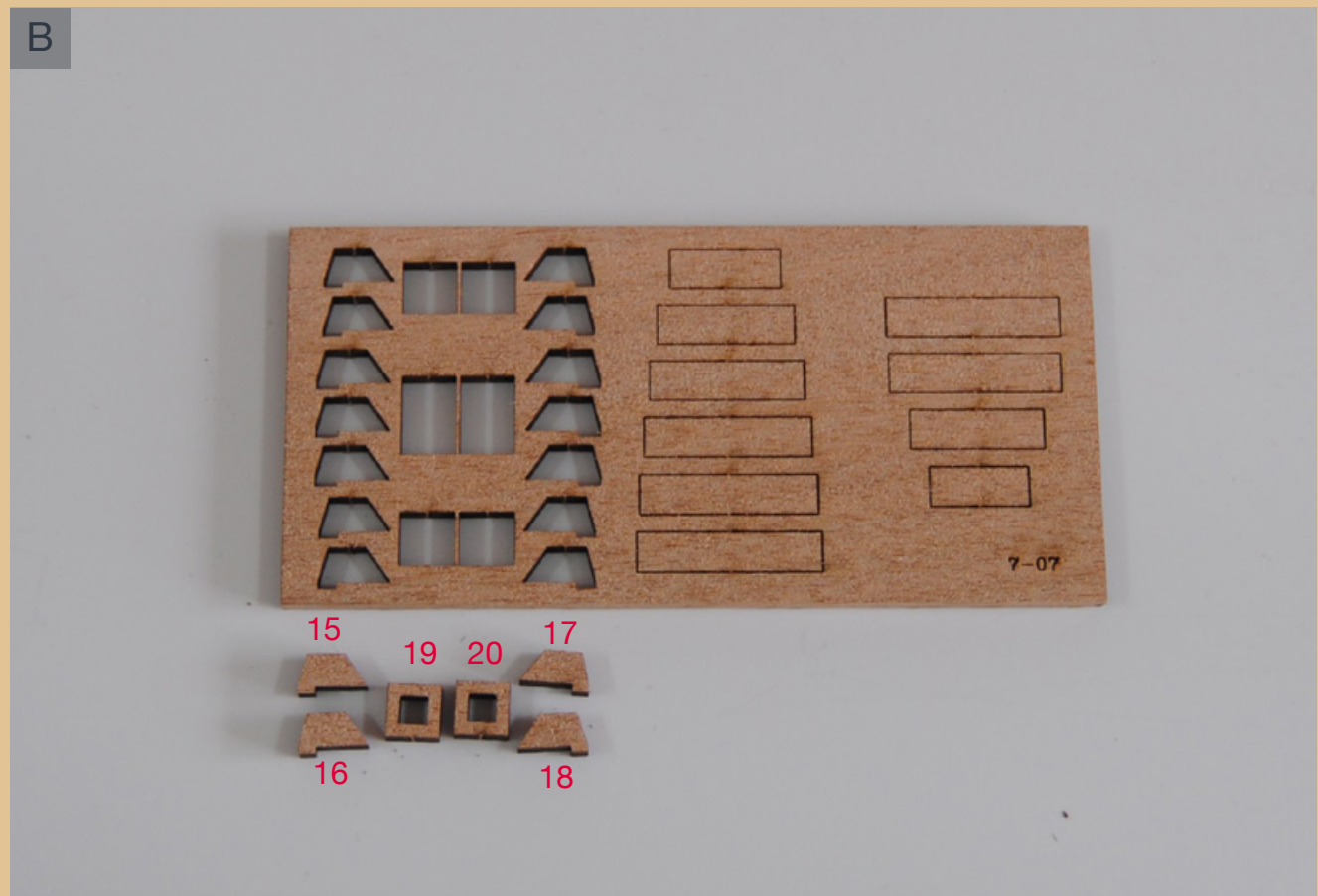
8 The second mast step correctly positioned.

PHASE 54

MAST STEP 03

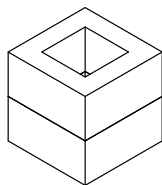
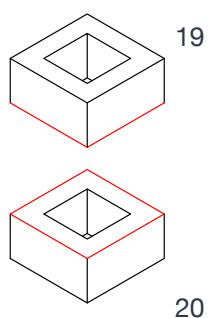


A Drawing of tablet 7-07

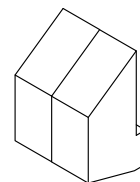
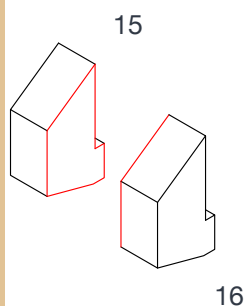


B Detach the pieces 15, 16, 17, 18, 19 and 20 from wooden tablet 7-07.

1



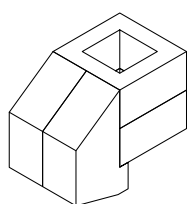
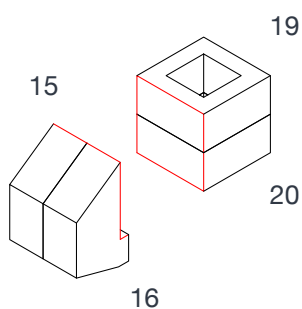
2



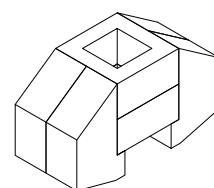
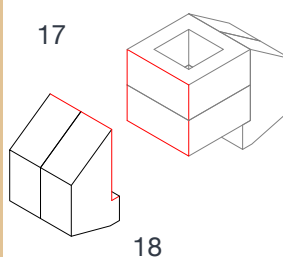
1 Join pieces 19 and 20 by applying a drop of glue to the parts highlighted in red.

2 In the same way, also join pieces 15 and 16.

3



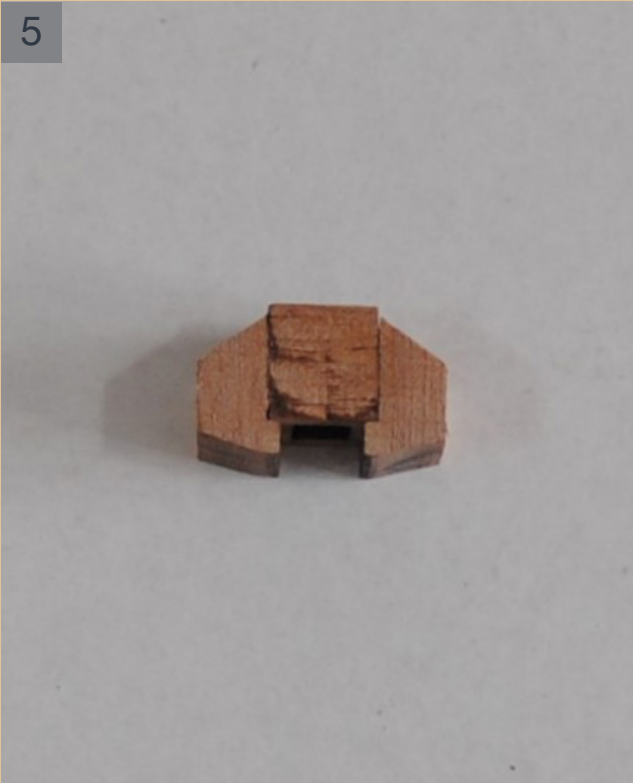
4



3 Now join the two assemblies using a small amount of glue.

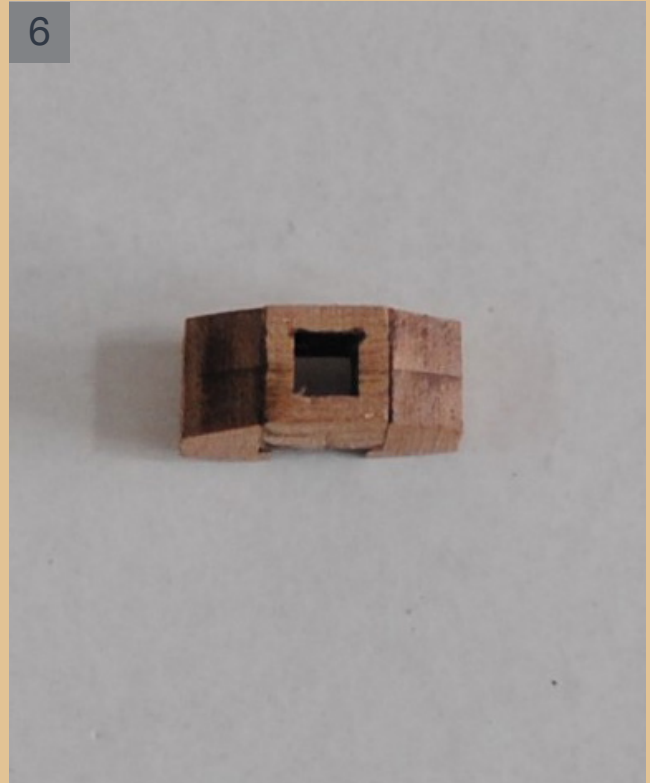
4 Repeat the same operations of steps 2 and 3 to join pieces 17 and 18.

5



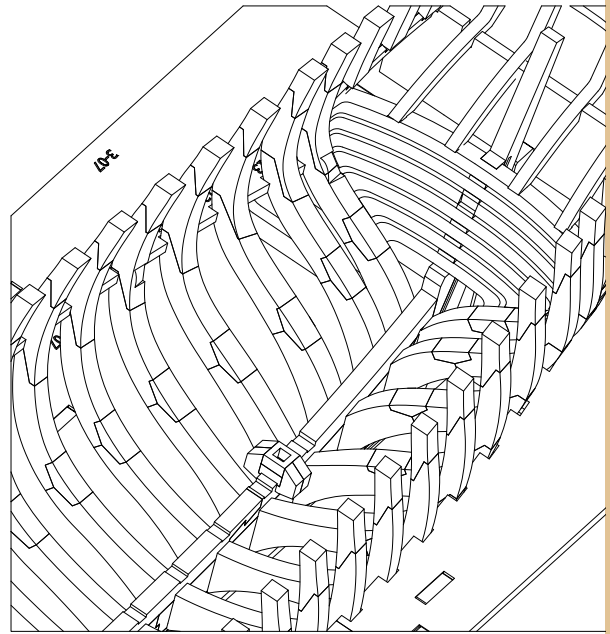
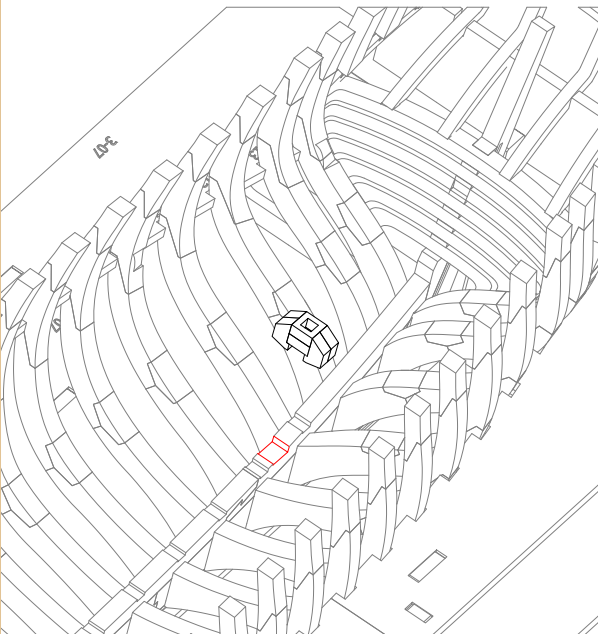
5 The third mast step correctly assembled (side view).

6

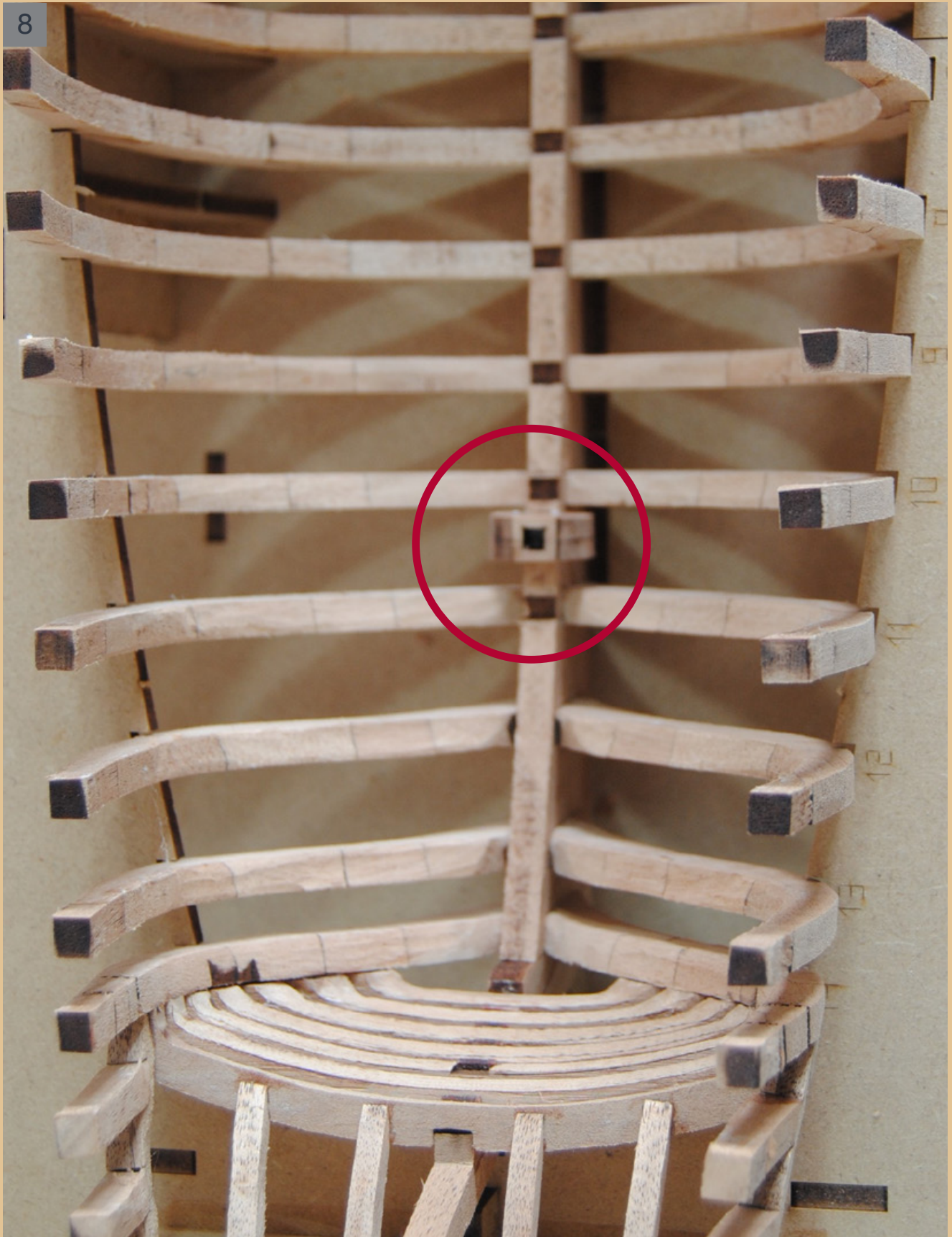


6 The third mast step correctly assembled (top view).

7



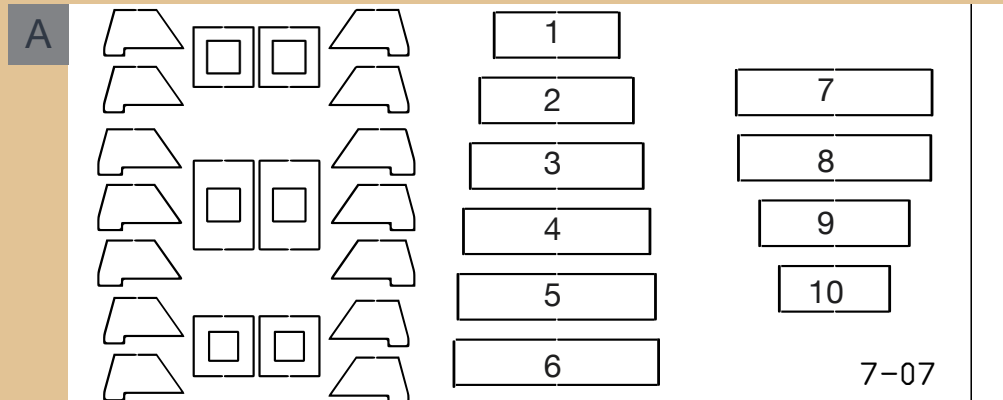
7 Glue the mast step in the position shown, by applying a drop of glue to the part highlighted in red.



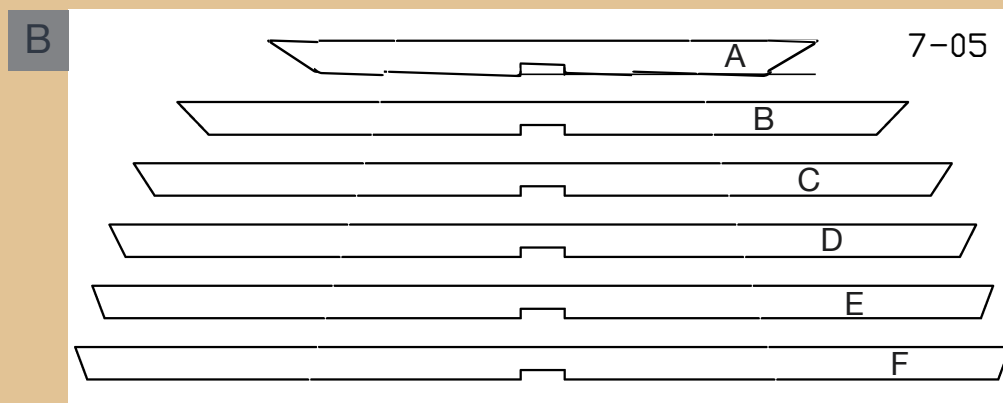
7 The third mast step correctly positioned.

PHASE 55

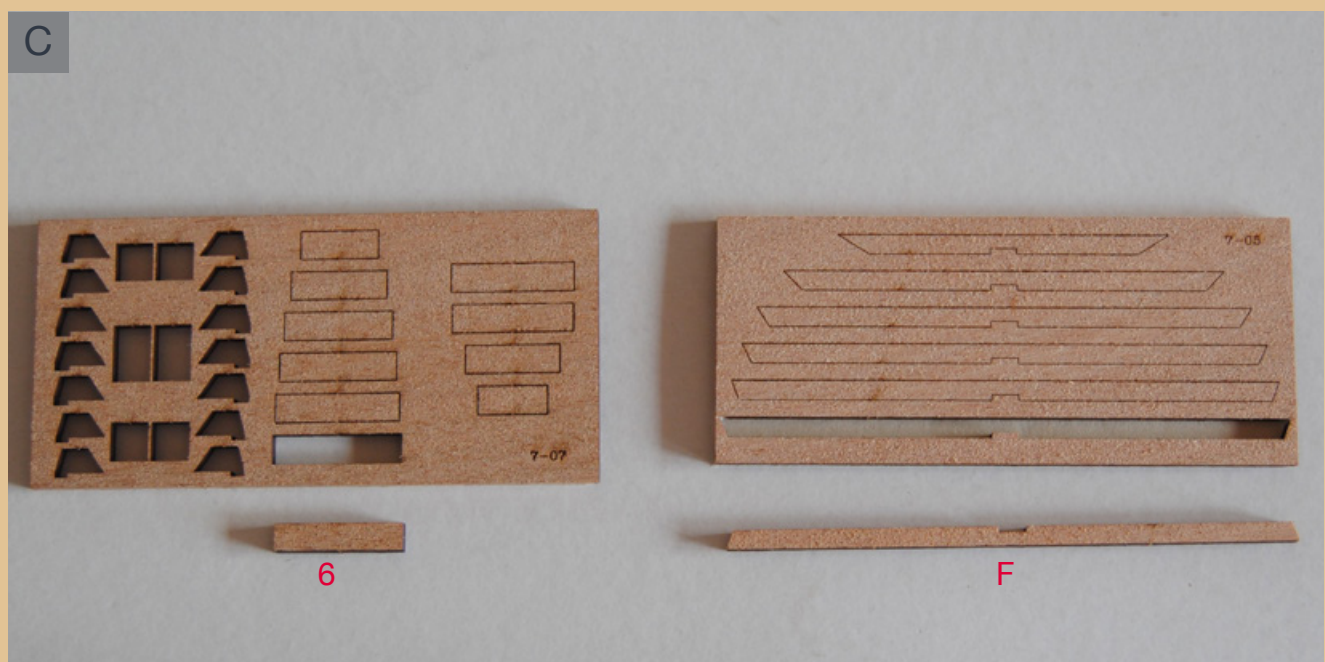
ORLOP DECK 01



A Drawing of tablet 7-07

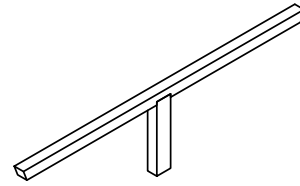
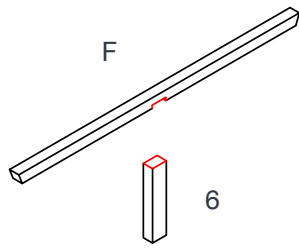


B Drawing of tablet 7-05



C Detach the piece 6 from wooden tablet 7-07 and the piece F from wooden tablet 7-05. Adapt the ends of the beams, following the internal angulation of the frames.

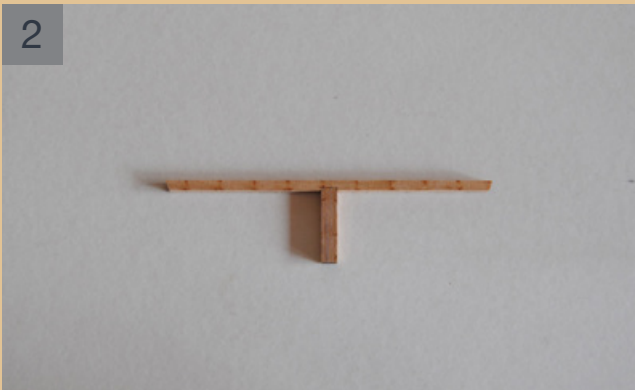
1



1

Join the pieces shown by applying a drop of glue to the parts highlighted in red.

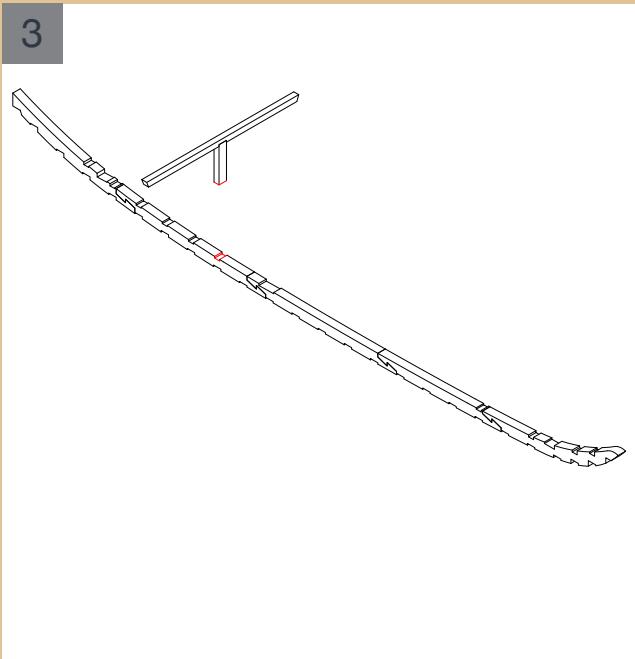
2



2

The first beam of the orlop deck correctly assembled.

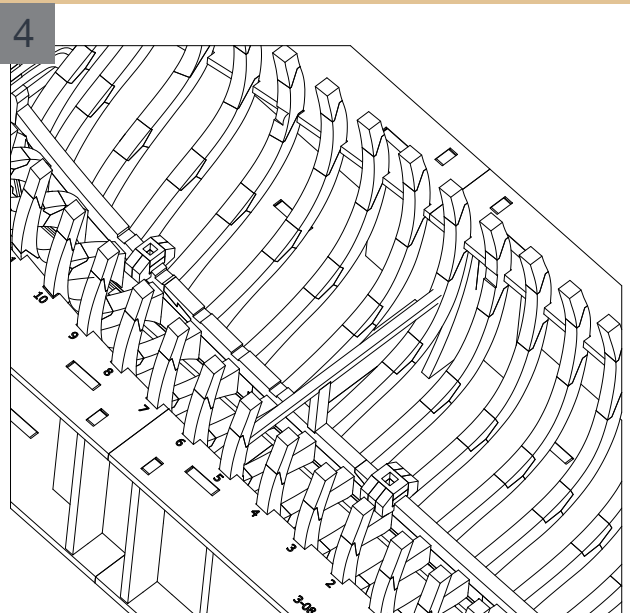
3



3

Insert the beam in the position shown in the illustrations on this page. Apply a drop of glue to the parts indicated in red.

4

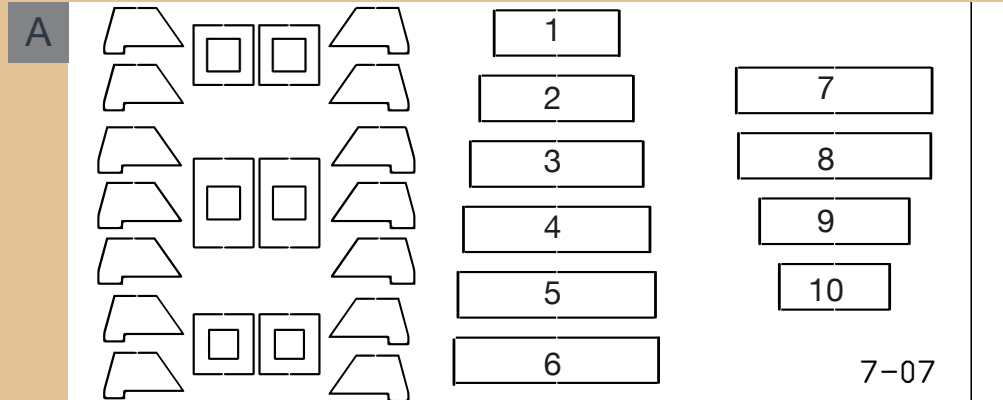


4

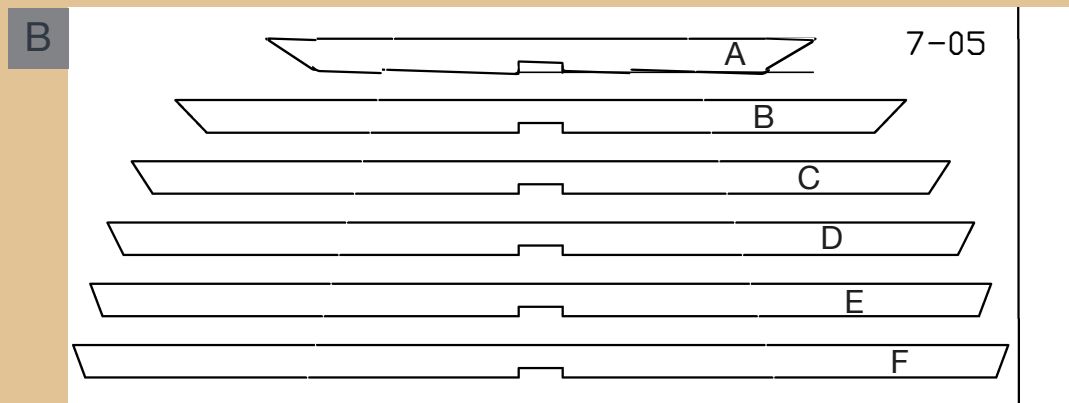
The beam correctly inserted into the hull.

PHASE 56

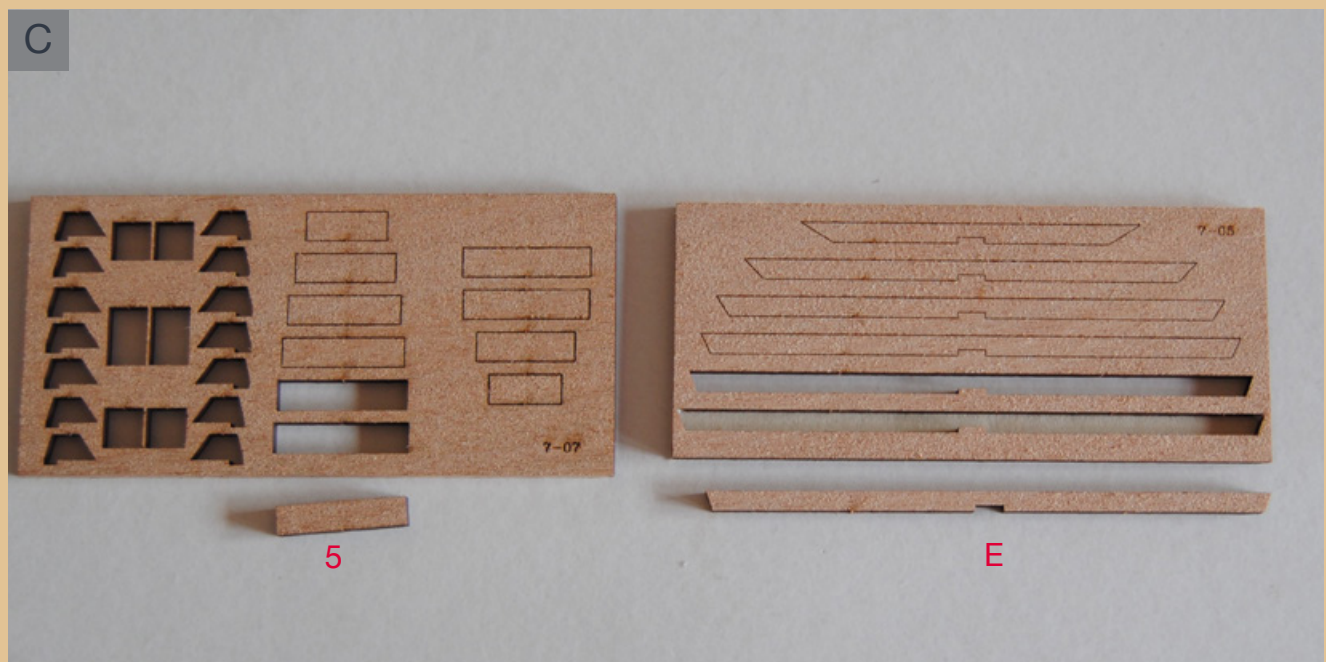
ORLOP DECK 02



A Drawing of tablet 7-07

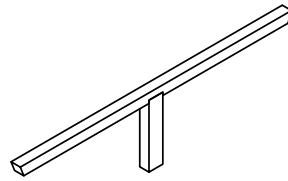
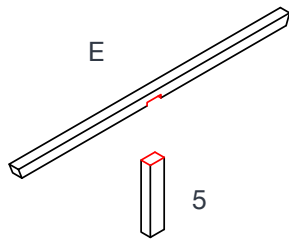


B Drawing of tablet 7-05



C Detach the piece 5 from wooden tablet 7-07 and the piece E from wooden tablet 7-05. Adapt the ends of the beams, following the internal angulation of the frames.

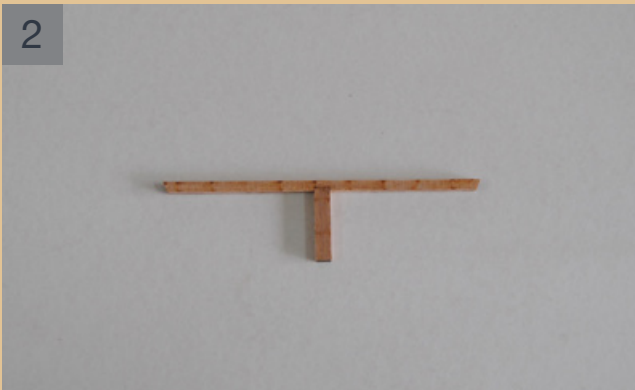
1



1

Join the pieces shown by applying a drop of glue to the parts highlighted in red.

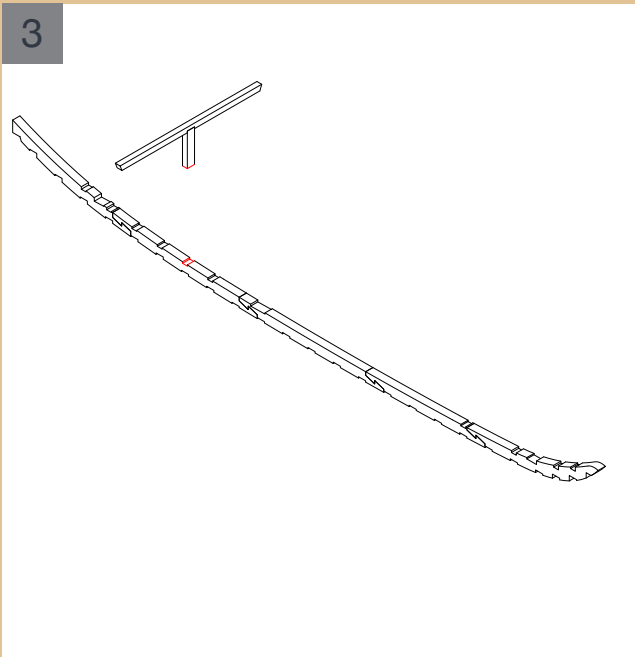
2



2

The second beam of the orlop deck correctly assembled.

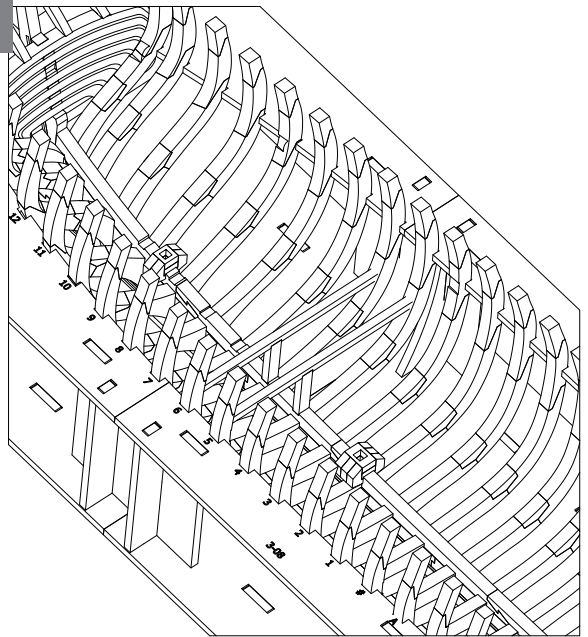
3



3

Insert the beam in the position shown in the illustrations on this page. Apply a drop of glue to the parts indicated in red.

4

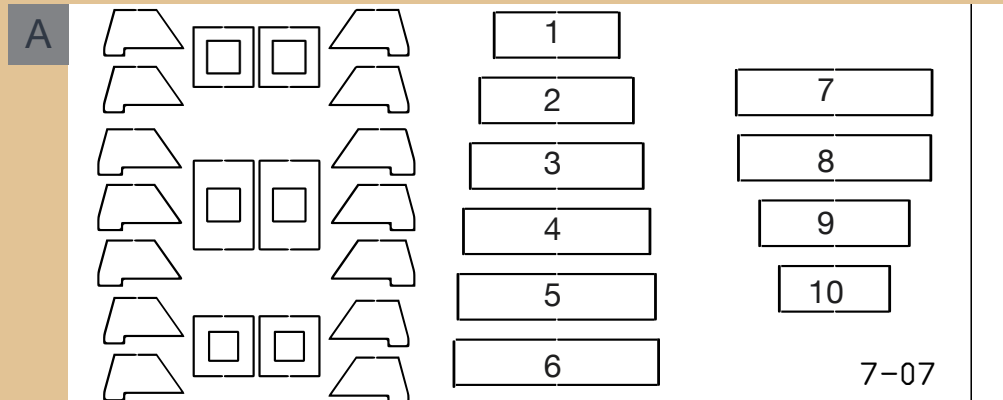


4

The beam correctly inserted into the hull.

PHASE 57

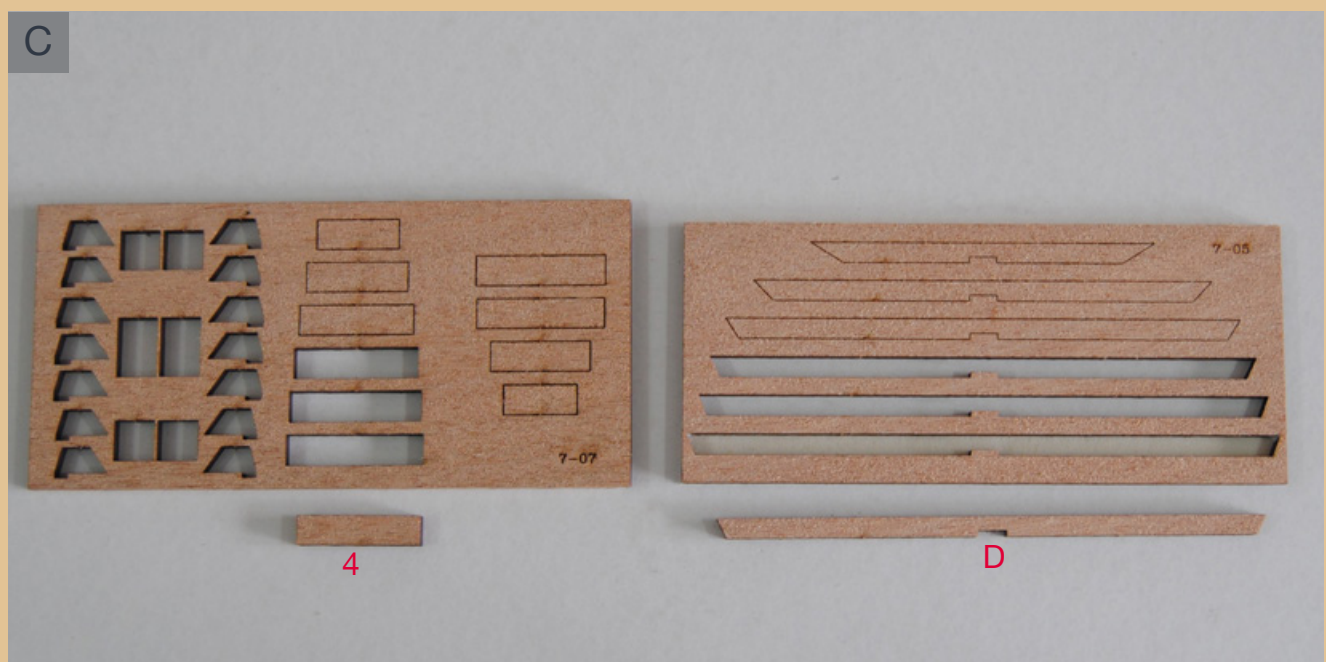
ORLOP DECK 03



A Drawing of tablet 7-07

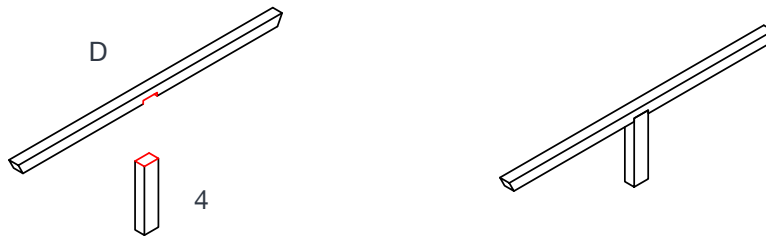


B Drawing of tablet 7-05



C Detach the piece 4 from wooden tablet 7-07 and the piece D from wooden tablet 7-05. Adapt the ends of the beams, following the internal angulation of the frames.

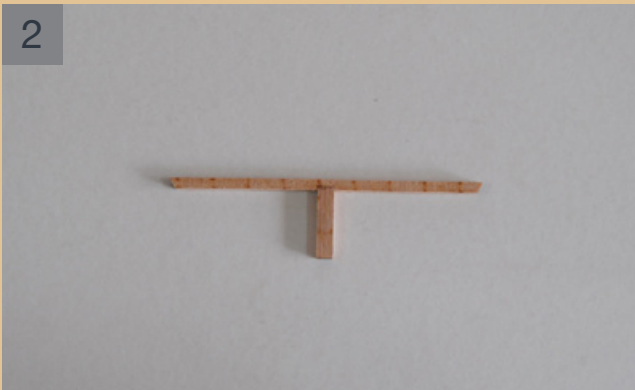
1



1

Join the pieces shown by applying a drop of glue to the parts highlighted in red.

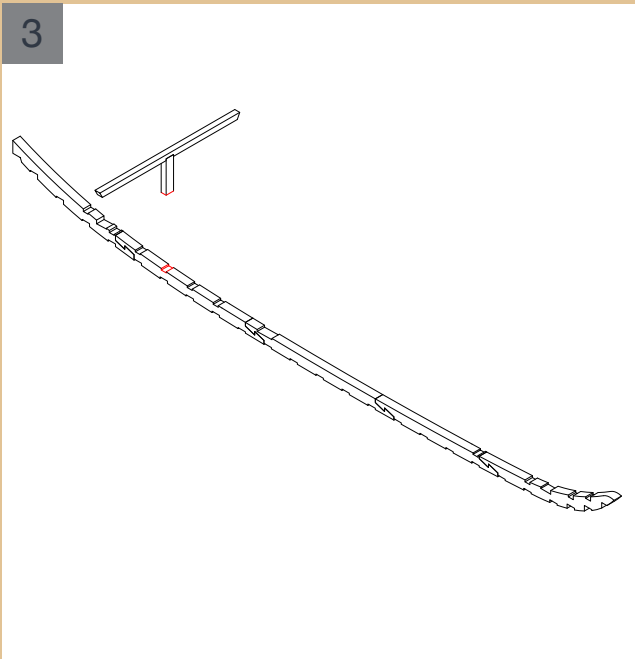
2



2

The third beam of the orlop deck correctly assembled.

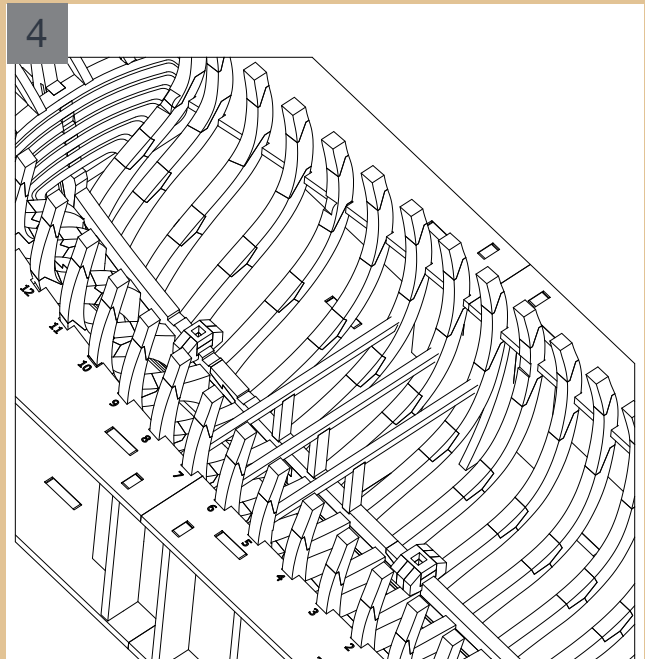
3



3

Insert the beam in the position shown in the illustrations on this page. Apply a drop of glue to the parts indicated in red.

4

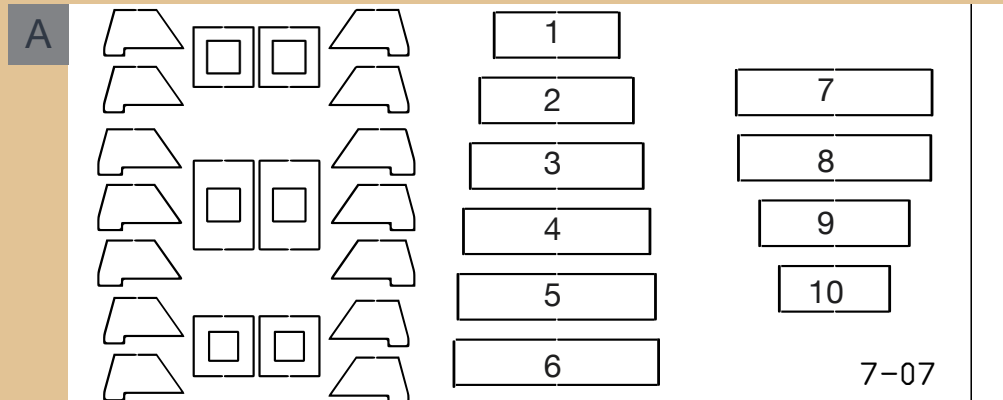


4

The beam correctly inserted into the hull.

PHASE 58

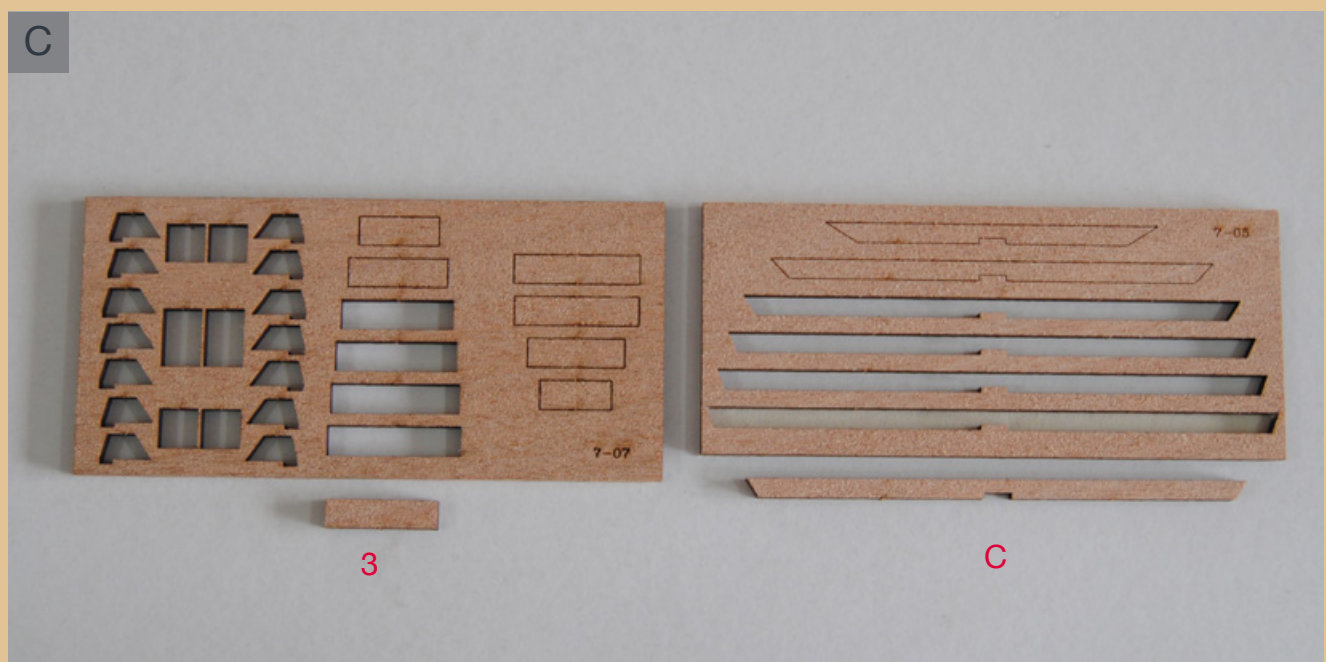
ORLOP DECK 04



A Drawing of tablet 7-07

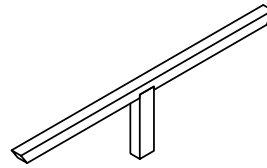
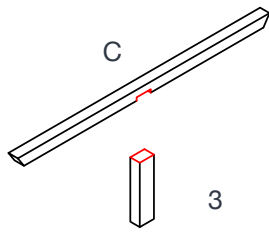


B Drawing of tablet 7-05



C Detach the piece 3 from wooden tablet 7-07 and the piece C from wooden tablet 7-05. Adapt the ends of the beams, following the internal angulation of the frames.

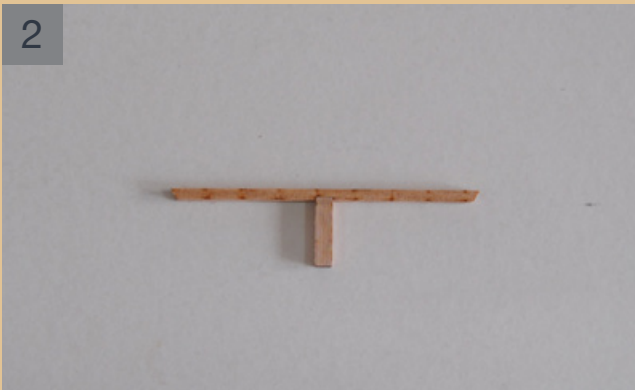
1



1

Join the pieces shown by applying a drop of glue to the parts highlighted in red.

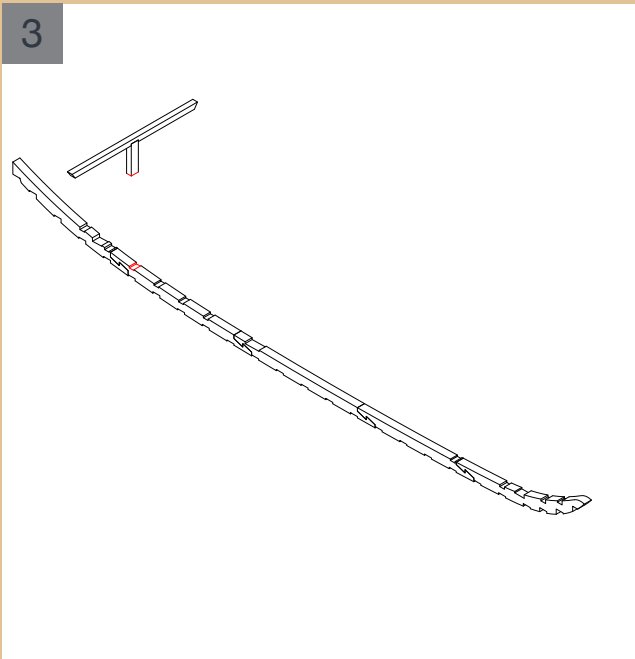
2



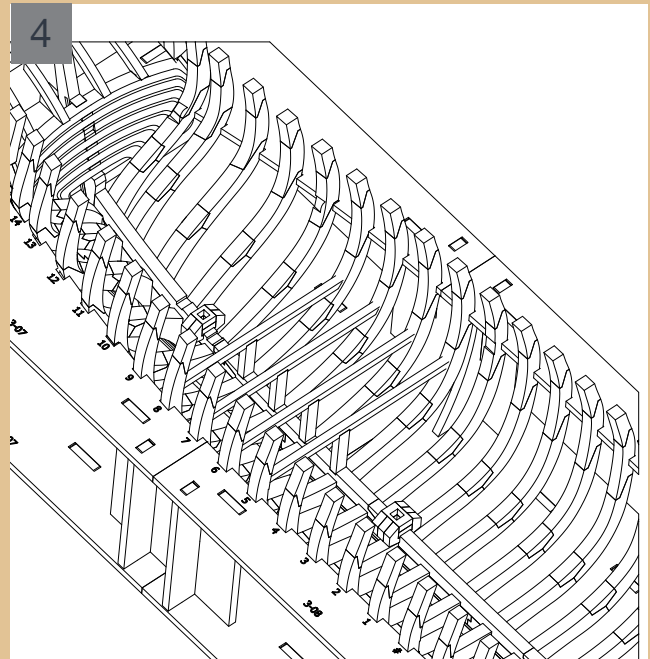
2

The fourth beam of the orlop deck correctly assembled.

3



4



3

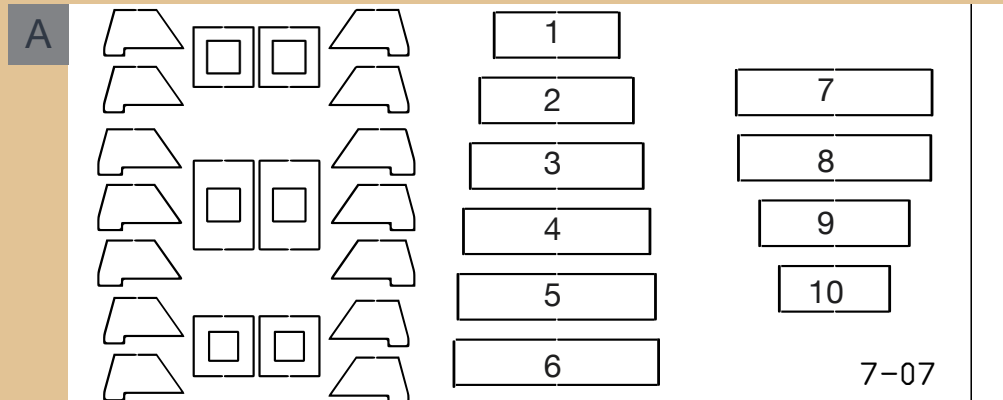
Insert the beam in the position shown in the illustrations on this page. Apply a drop of glue to the parts indicated in red.

4

The beam correctly inserted into the hull.

PHASE 59

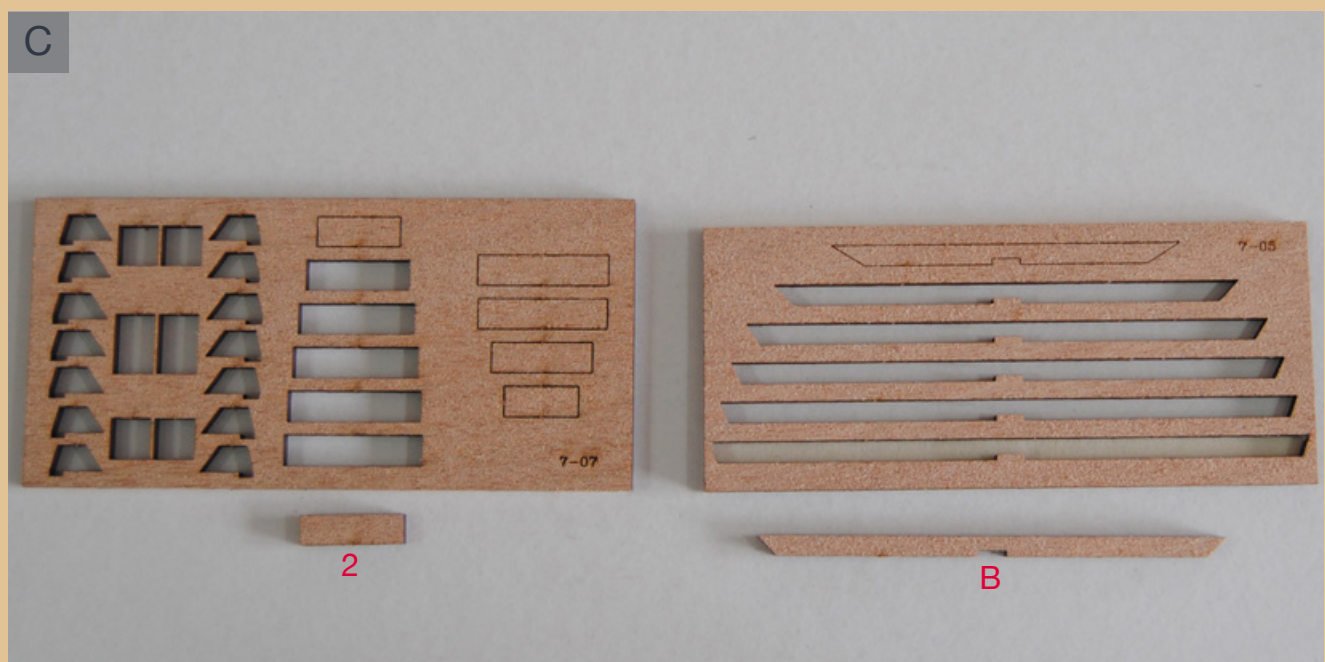
ORLOP DECK 05



A Drawing of tablet 7-07



B Drawing of tablet 7-05



C Detach the piece 2 from wooden tablet 7-07 and the piece B from wooden tablet 7-05. Adapt the ends of the beams, following the internal angulation of the frames.

1



1 Join the pieces shown by applying a drop of glue to the parts highlighted in red.

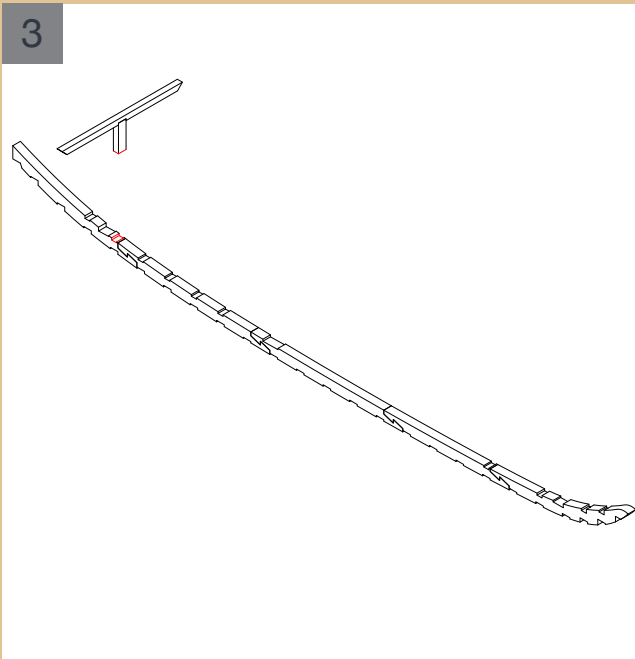
2



2

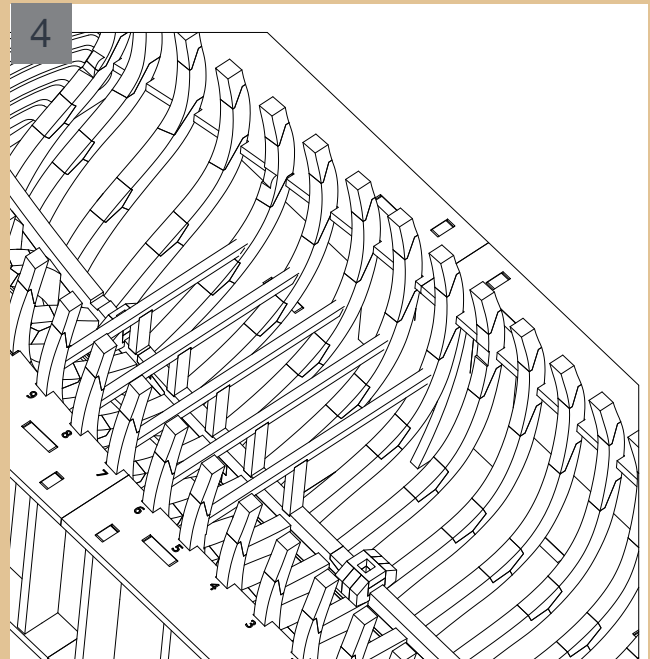
The fifth beam of the orlop deck correctly assembled.

3



3 Insert the beam in the position shown in the illustrations on this page. Apply a drop of glue to the parts indicated in red.

4

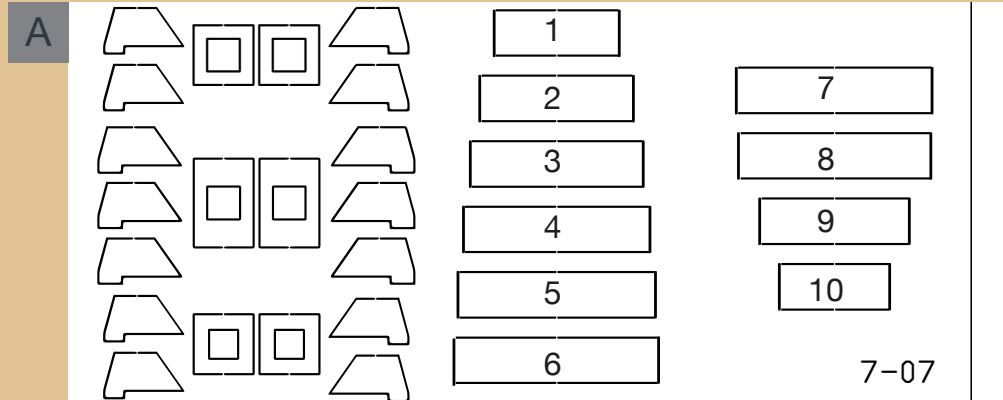


4

The beam correctly inserted into the hull.

PHASE 60

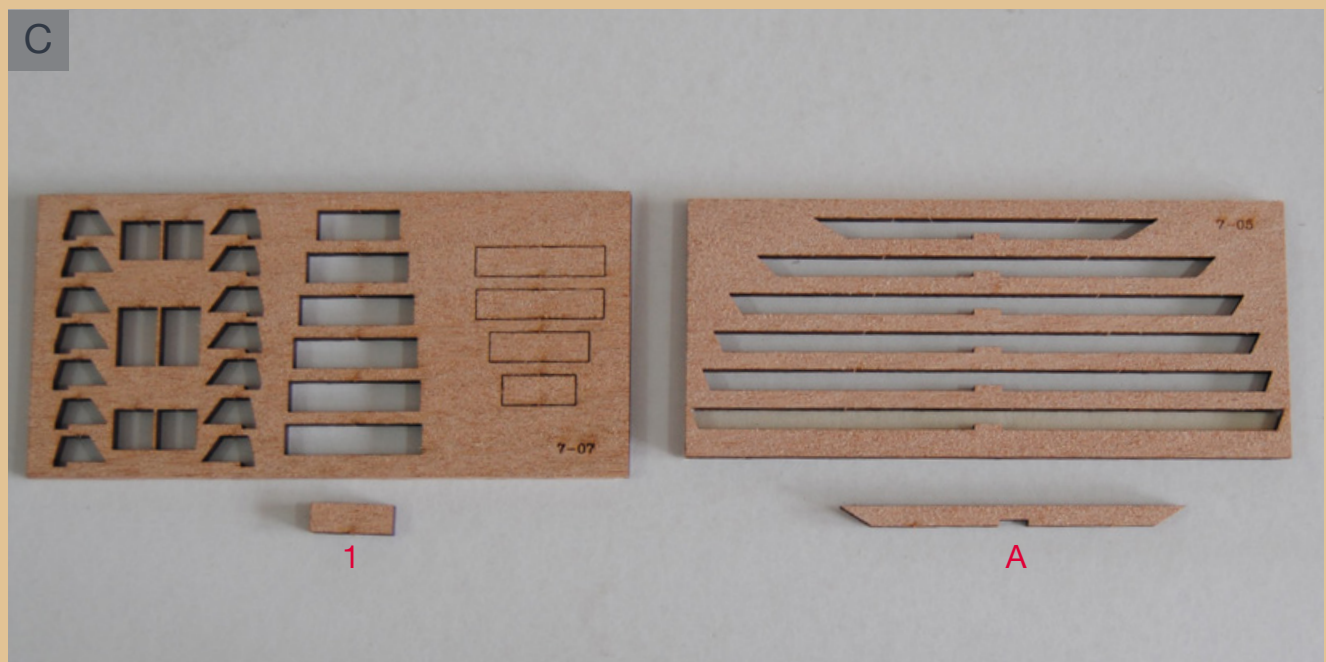
ORLOP DECK 06



A Drawing of tablet 7-07

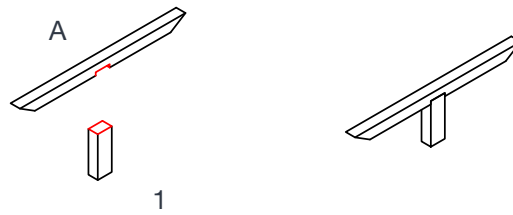


B Drawing of tablet 7-05



C Detach the piece 1 from wooden tablet 7-07 and the piece A from wooden tablet 7-05. Adapt the ends of the beams, following the internal angulation of the frames.

1



1

Join the pieces shown by applying a drop of glue to the parts highlighted in red.

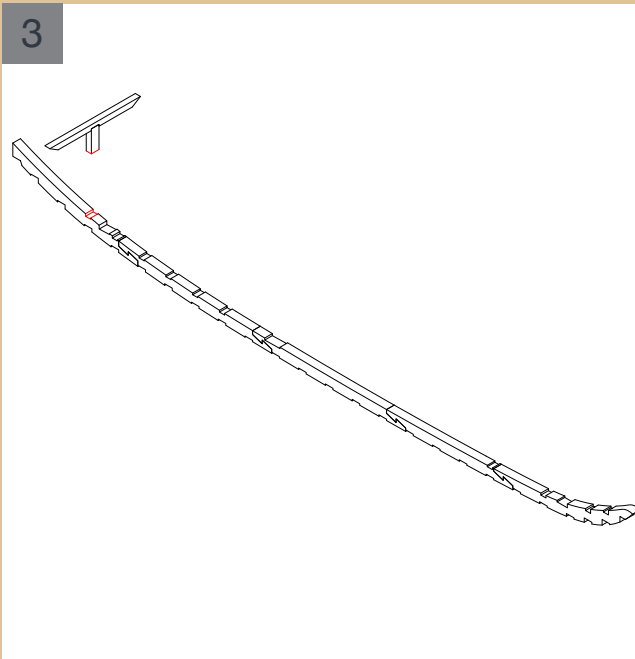
2



2

The sixth beam of the orlop deck correctly assembled.

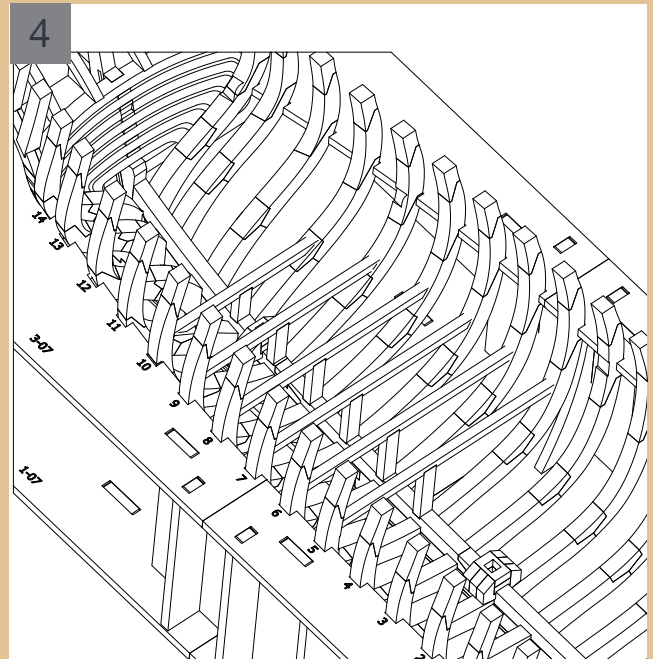
3



3

Insert the beam in the position shown in the illustrations on this page. Apply a drop of glue to the parts indicated in red.

4

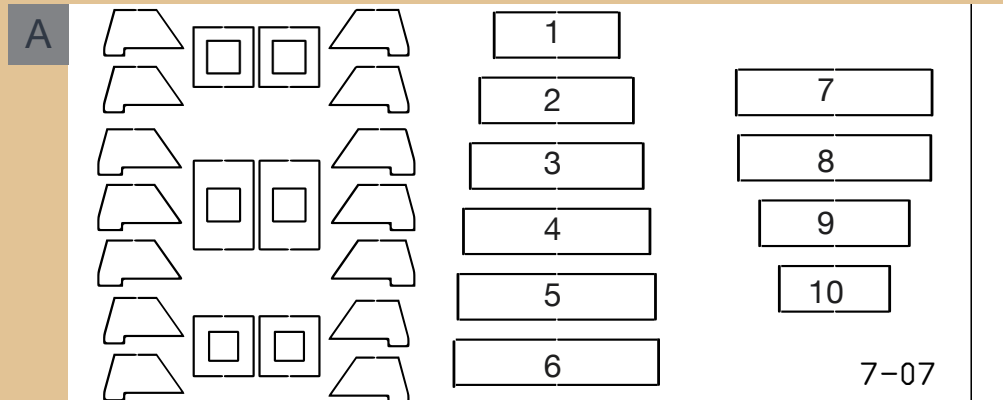


4

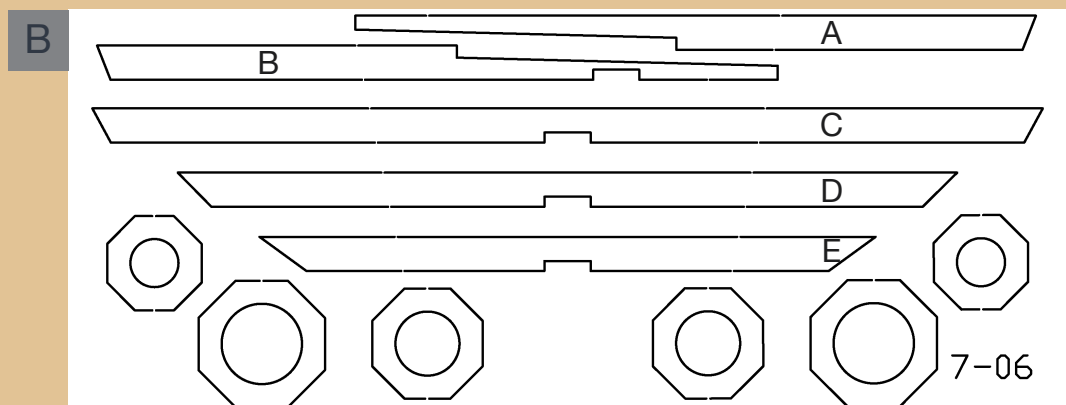
The beam correctly inserted into the hull.

PHASE 61

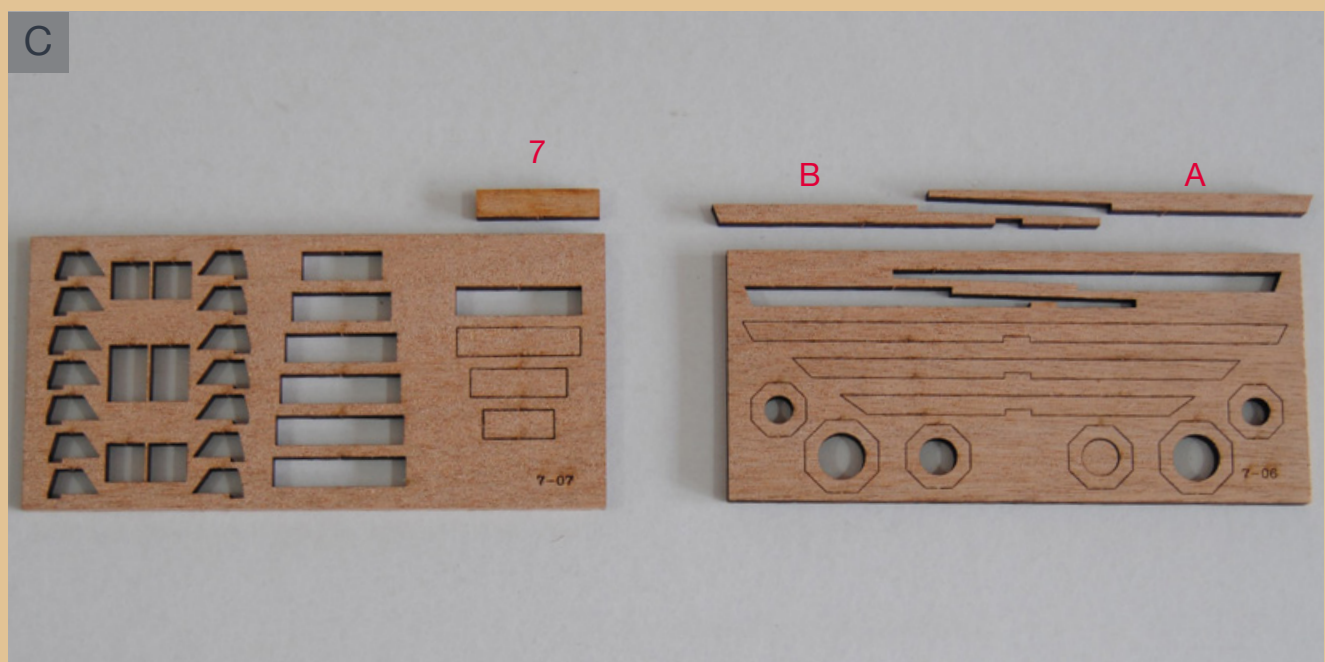
ORLOP DECK 07



A Drawing of tablet 7-07

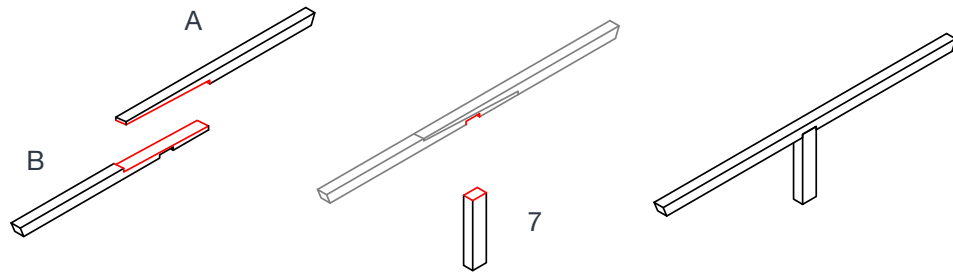


B Drawing of tablet 7-06



C Detach the piece 7 from wooden tablet 7-07 and the pieces A and B from wooden tablet 7-06. Adapt the ends of the beams, following the internal angulation of the frames.

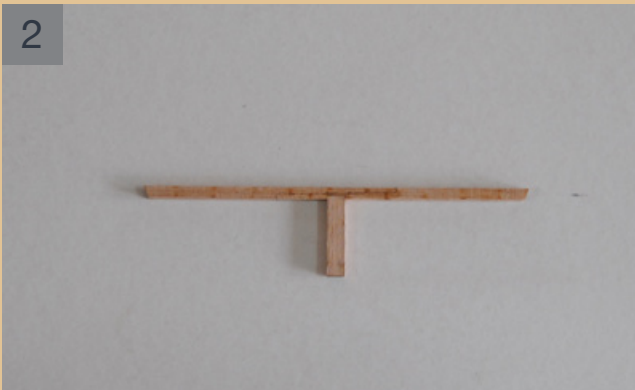
1



1

Join the pieces shown by applying a drop of glue to the parts highlighted in red.

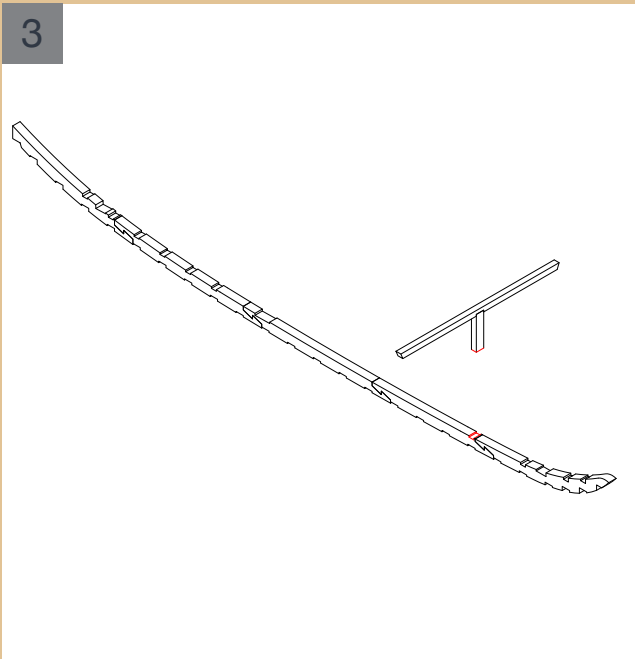
2



2

The seventh beam of the orlop deck correctly assembled.

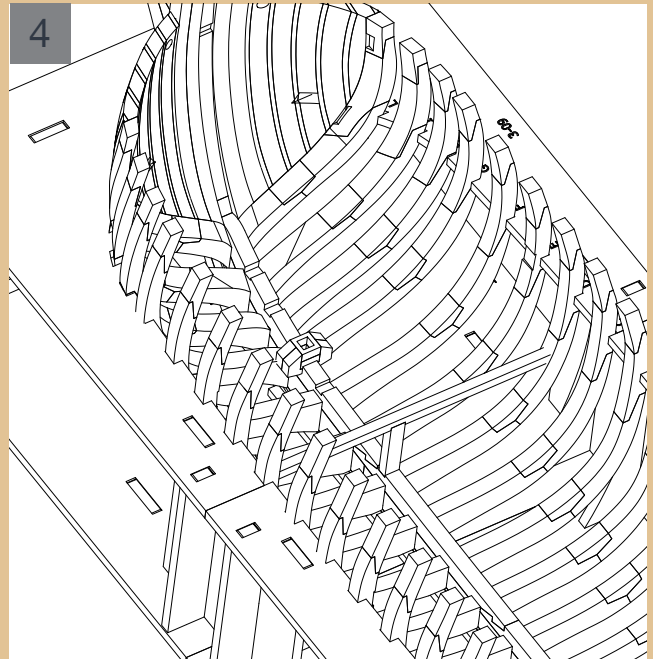
3



3

Insert the beam in the position shown in the illustrations on this page. Apply a drop of glue to the parts indicated in red.

4

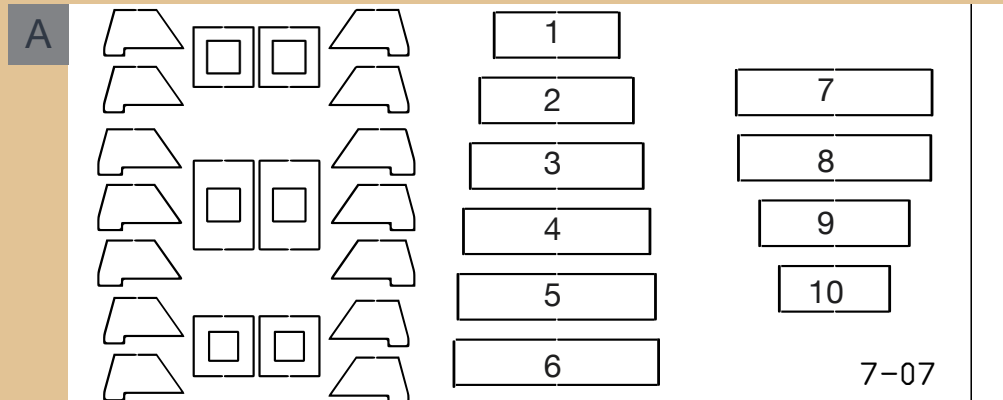


4

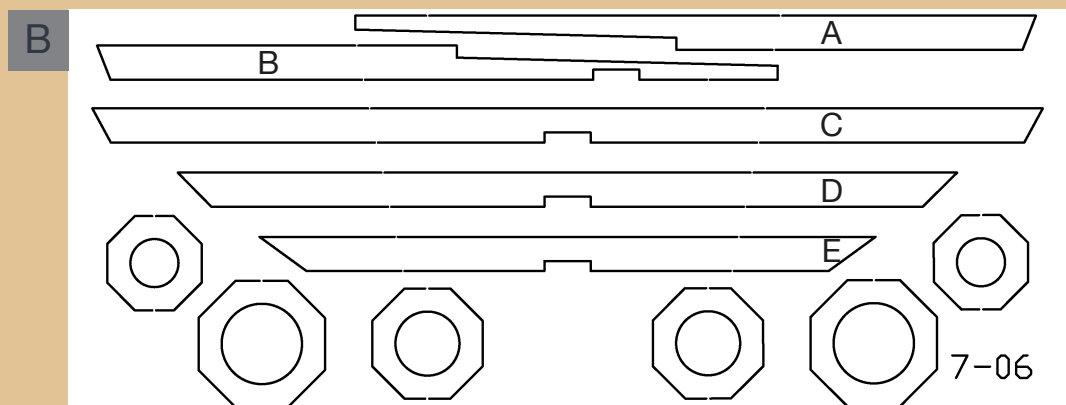
The beam correctly inserted into the hull.

PHASE 62

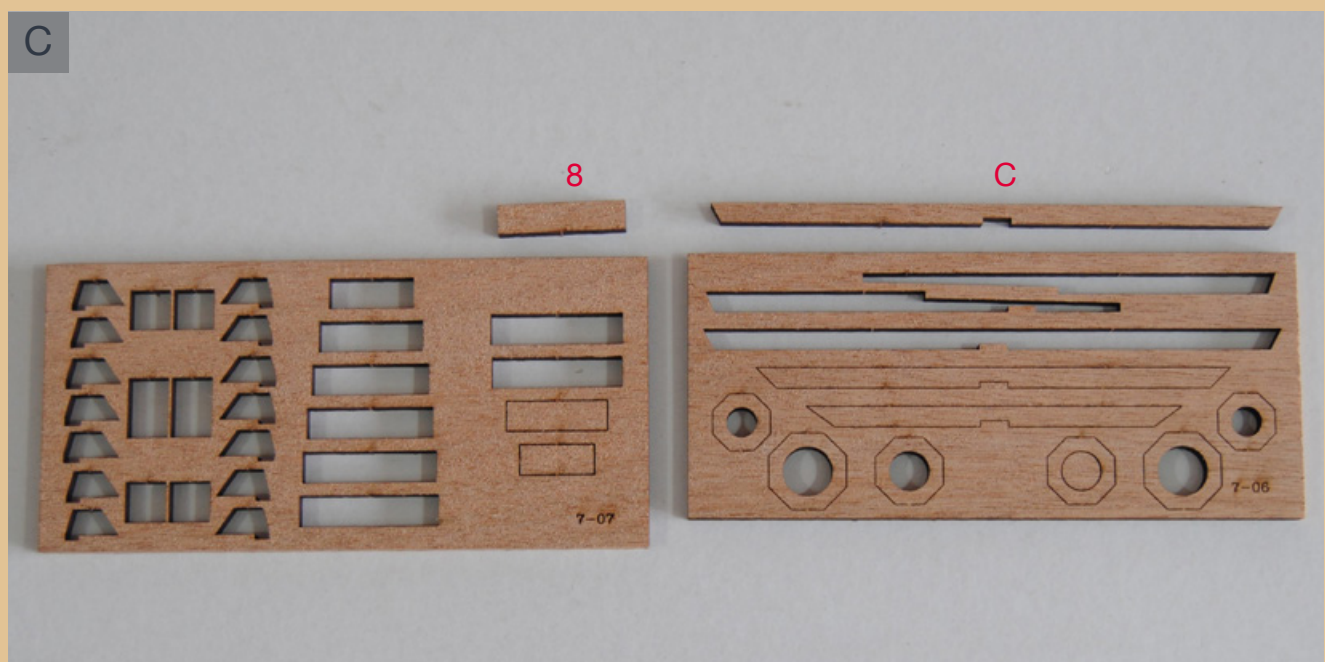
ORLOP DECK 08



A Drawing of tablet 7-07

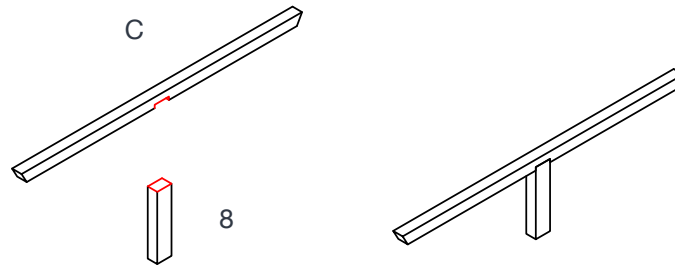


B Drawing of tablet 7-06



C Detach the piece 8 from wooden tablet 7-07 and the piece C from wooden tablet 7-06. Adapt the ends of the beams, following the internal angulation of the frames.

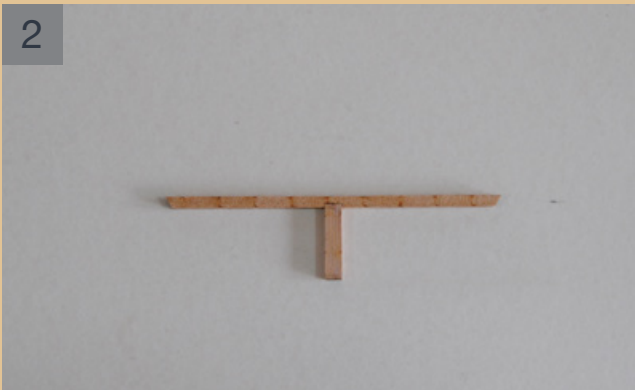
1



1

Join the pieces shown by applying a drop of glue to the parts highlighted in red.

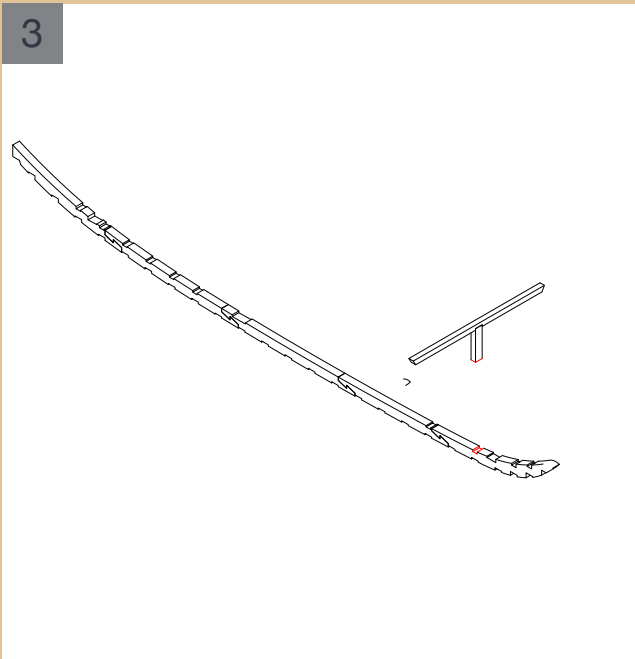
2



2

The eighth beam of the orlop deck correctly assembled.

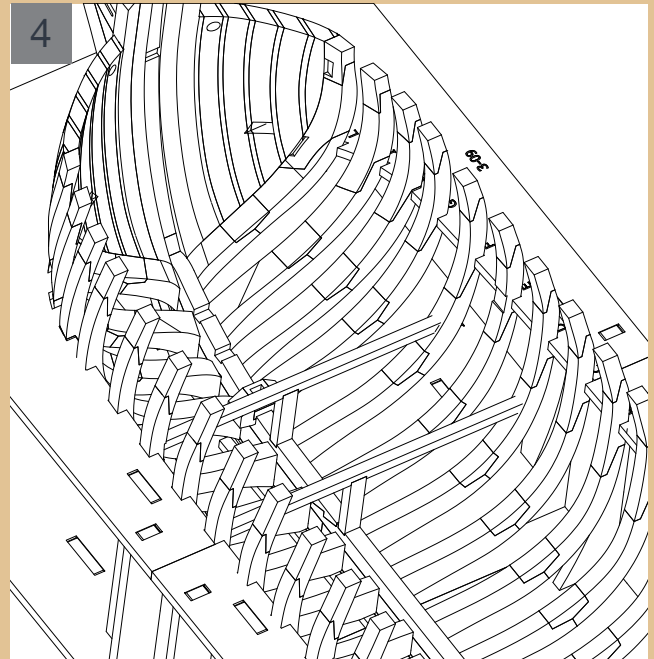
3



3

Insert the beam in the position shown in the illustrations on this page. Apply a drop of glue to the parts indicated in red.

4

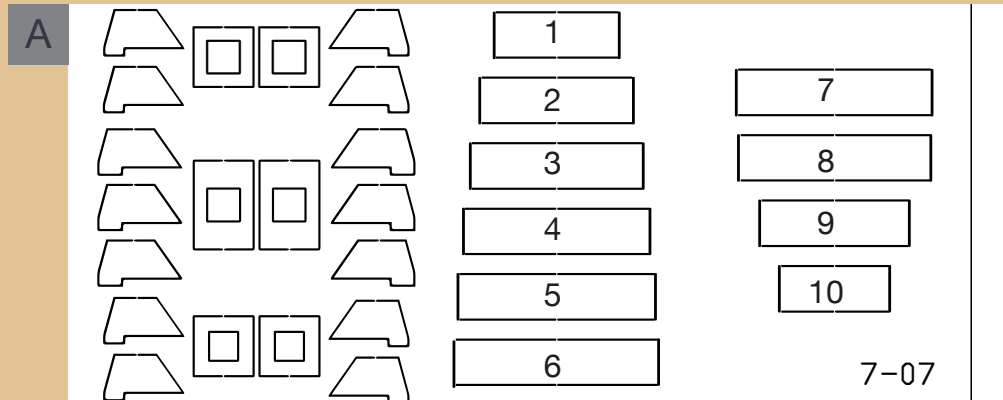


4

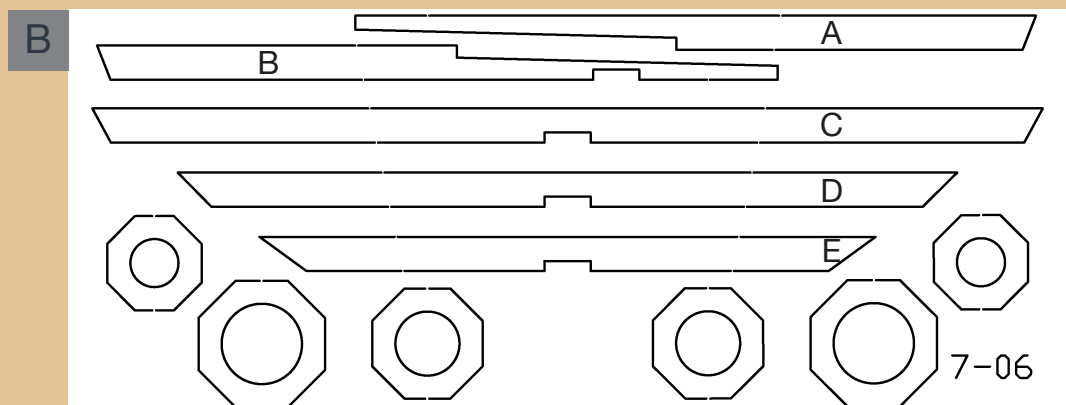
The beam correctly inserted into the hull.

PHASE 63

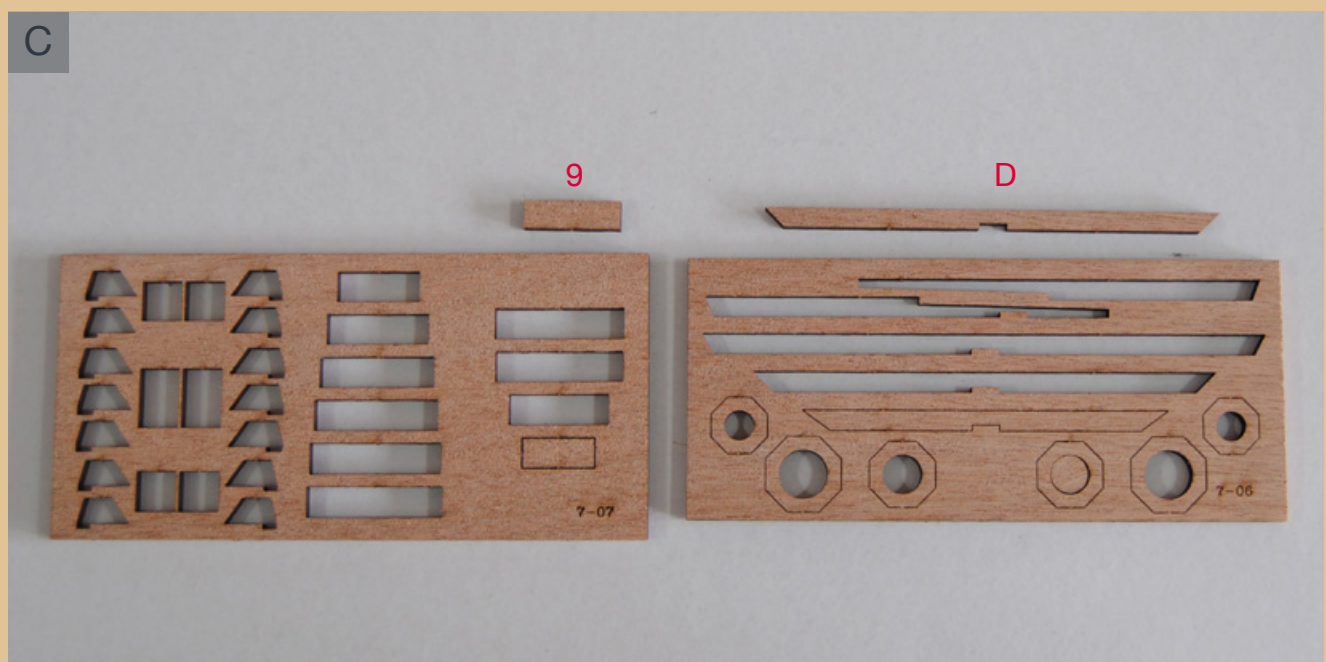
ORLOP DECK 09



A Drawing of tablet 7-07

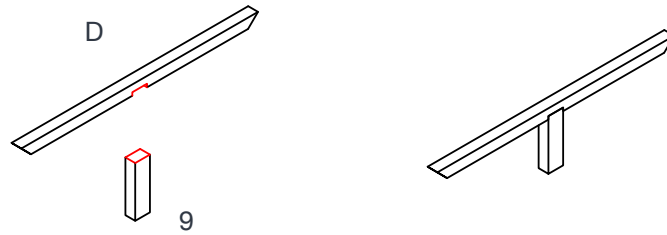


B Drawing of tablet 7-06



C Detach the piece 9 from wooden tablet 7-07 and the piece D from wooden tablet 7-06. Adapt the ends of the beams, following the internal angulation of the frames.

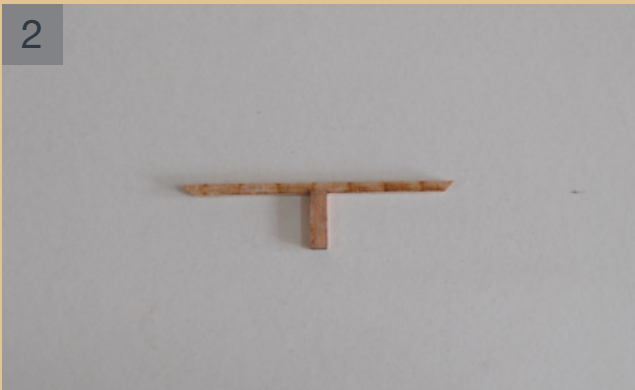
1



1

Join the pieces shown by applying a drop of glue to the parts highlighted in red.

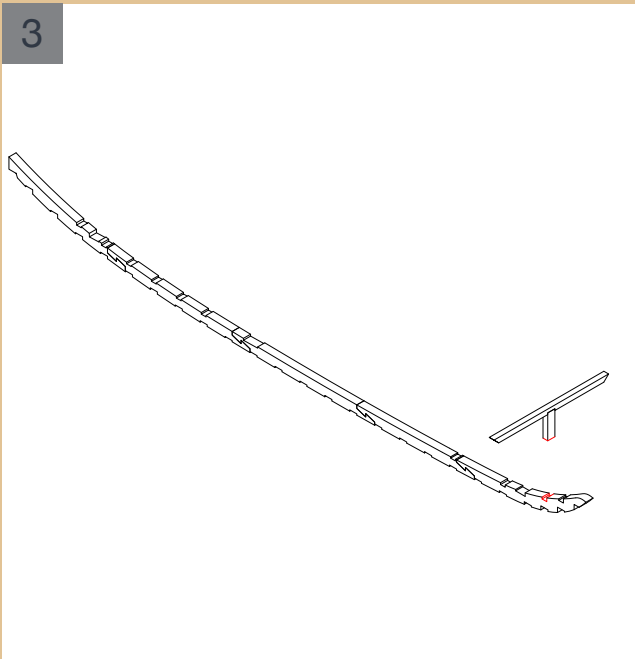
2



2

The ninth beam of the orlop deck correctly assembled.

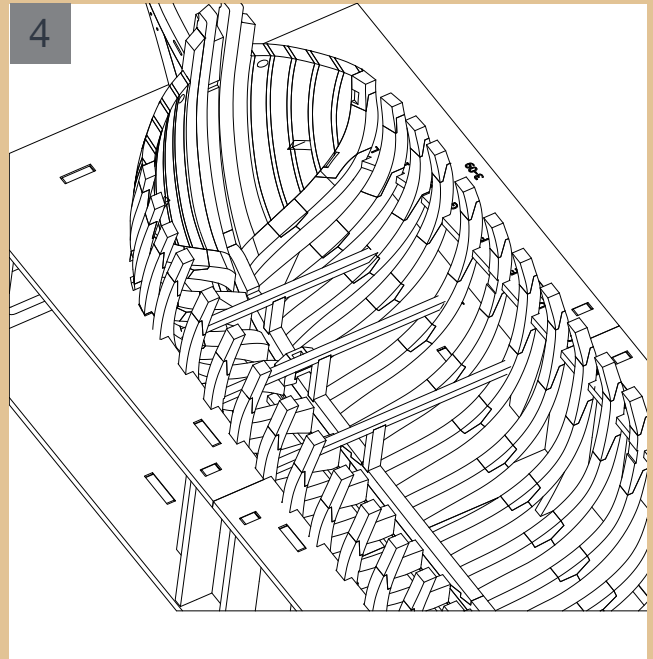
3



3

Insert the beam in the position shown in the illustrations on this page. Apply a drop of glue to the parts indicated in red.

4

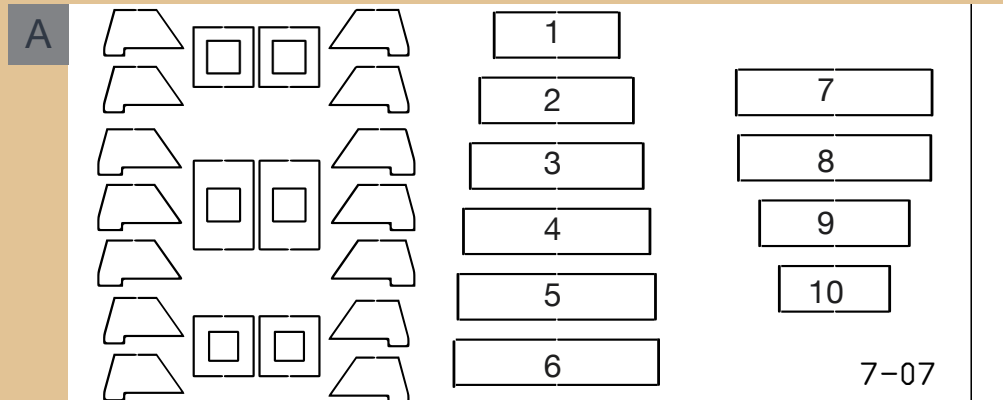


4

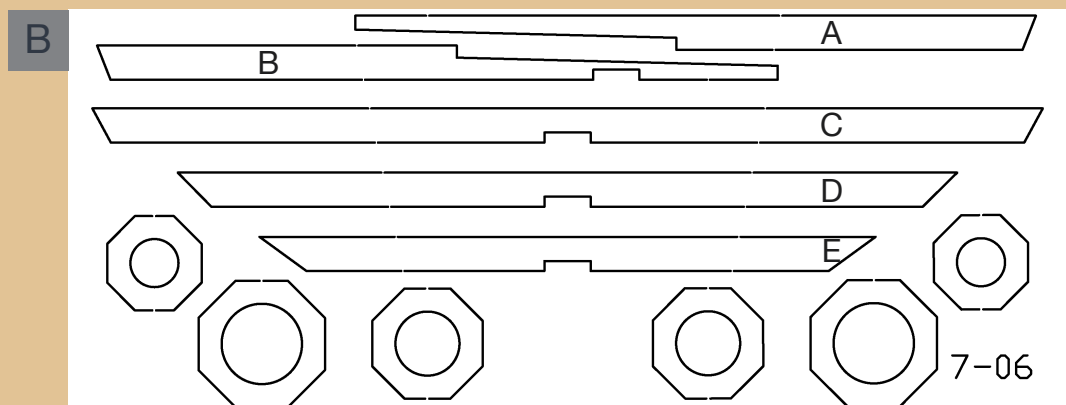
The beam correctly inserted into the hull.

PHASE 64

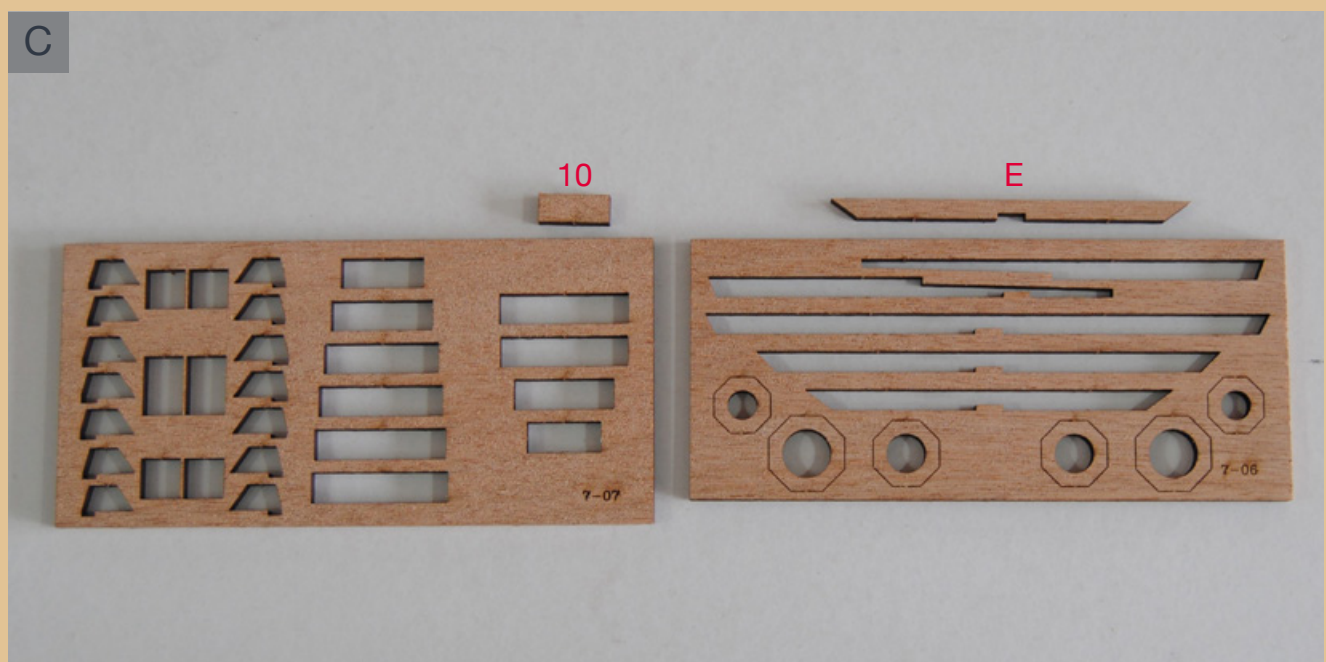
ORLOP DECK 10



A Drawing of tablet 7-07



B Drawing of tablet 7-06



C Detach the piece 10 from wooden tablet 7-07 and the piece E from wooden tablet 7-06. Adapt the ends of the beams, following the internal angulation of the frames.

1



1

Join the pieces shown by applying a drop of glue to the parts highlighted in red.

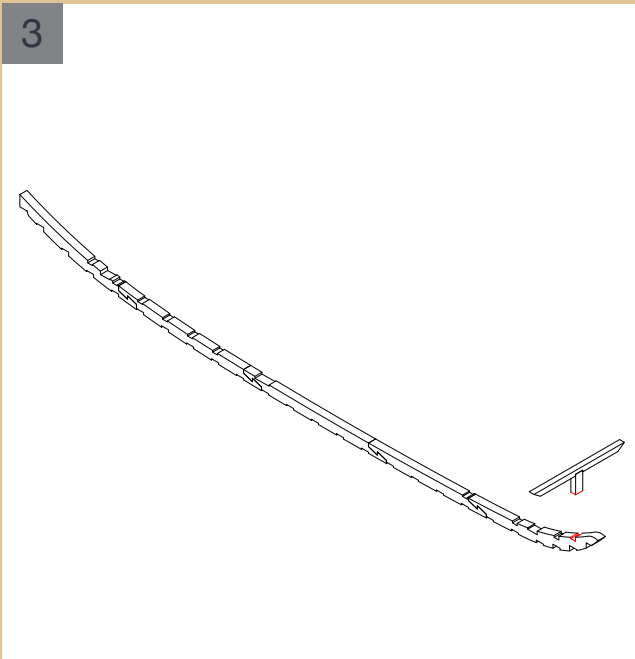
2



2

The tenth beam of the orlop deck correctly assembled.

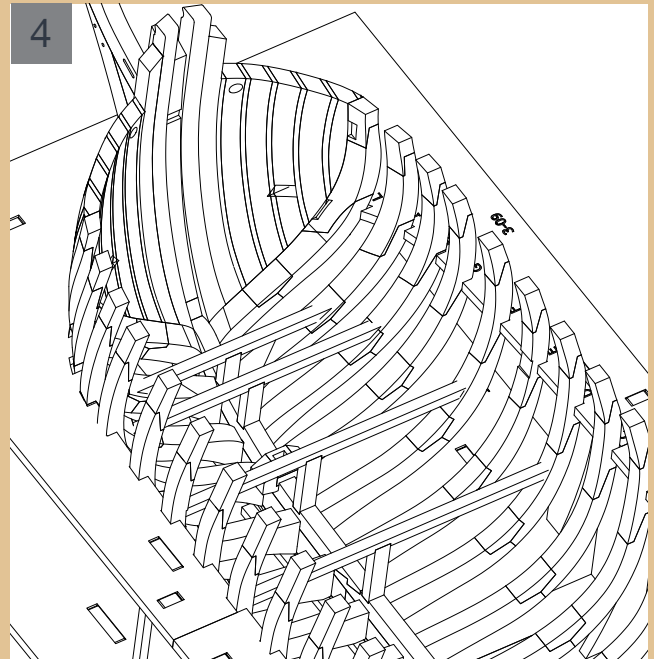
3



3

Insert the beam in the position shown in the illustrations on this page. Apply a drop of glue to the parts indicated in red.

4



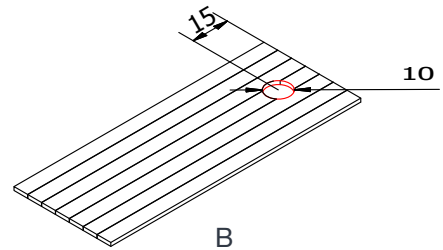
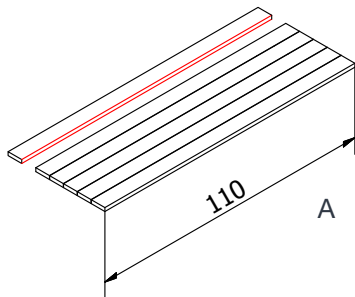
4

The beam correctly inserted into the hull.

PHASE 65

ORLOP DECK PLANKING 01

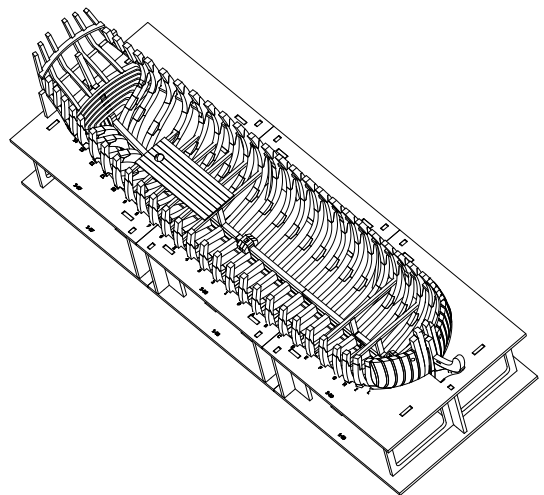
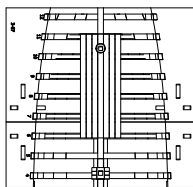
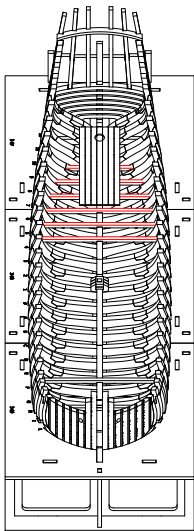
1



1

Cut some type A strips (1.5 x 6 x 250 mm) to obtain 7 pieces 110 mm long. Glue these pieces together as shown in figure 1A. When you have done that, drill a 10mm diameter hole 15mm away from one of the short sides and an equal distance from the long sides, as shown in Figure 1B.

2



2

Glue the planking thus obtained in the position shown, in the stern of the model.

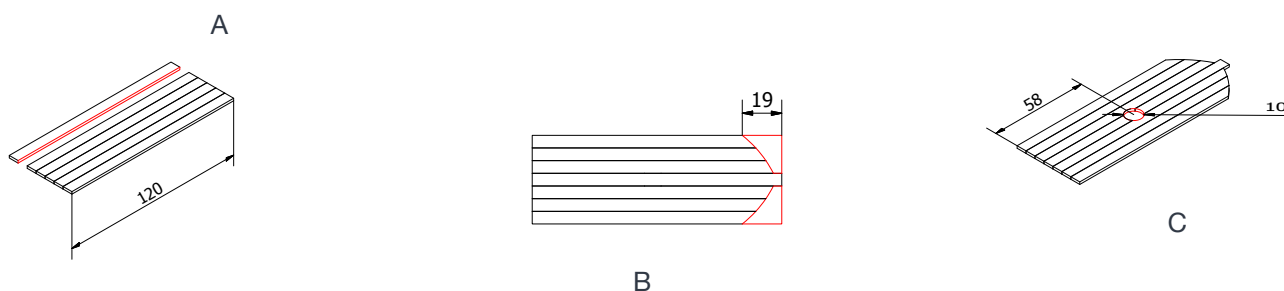


3 The stern planking correctly positioned.

PHASE 66

ORLOP DECK PLANKING 02

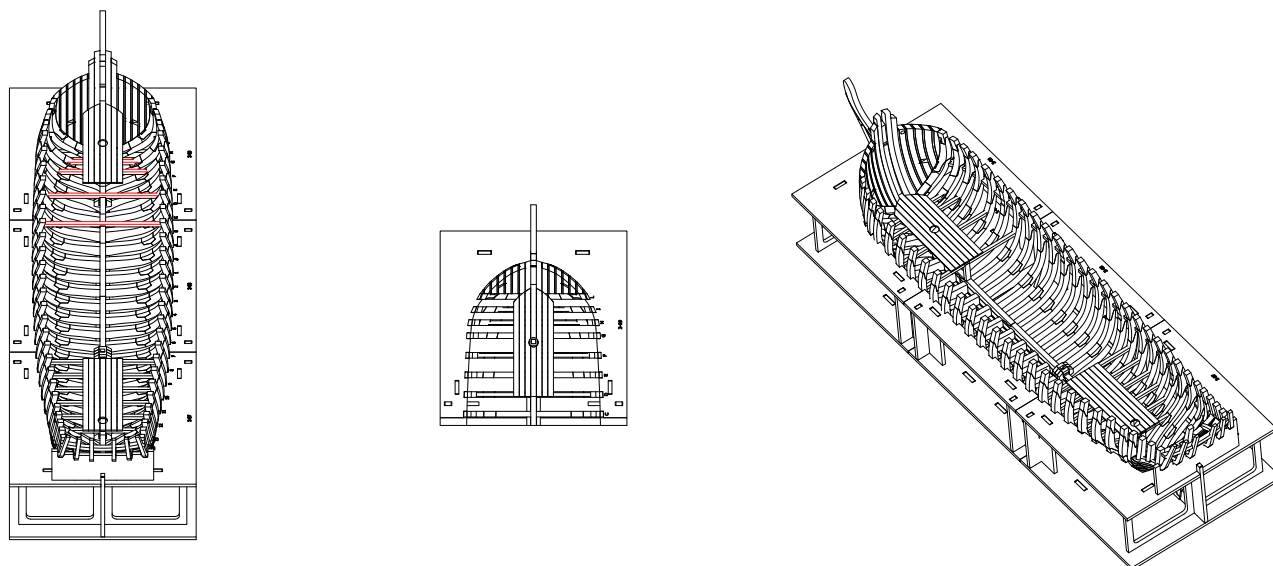
1



1

Cut some type A strips (1.5 x 6 x 250 mm) to obtain 7 pieces 120 mm long. Glue these pieces together as shown in figure 1A. When you have done this, shape one of the short sides as shown in figure 1B; as you shape it, do some tests to check that the profile matches the bow of the model, as shown in the photograph on the next page. Finally, drill a 10mm diameter hole in the centre of the planking, 58mm away from the unshaped edge, as shown in Figure 1C.

2



2

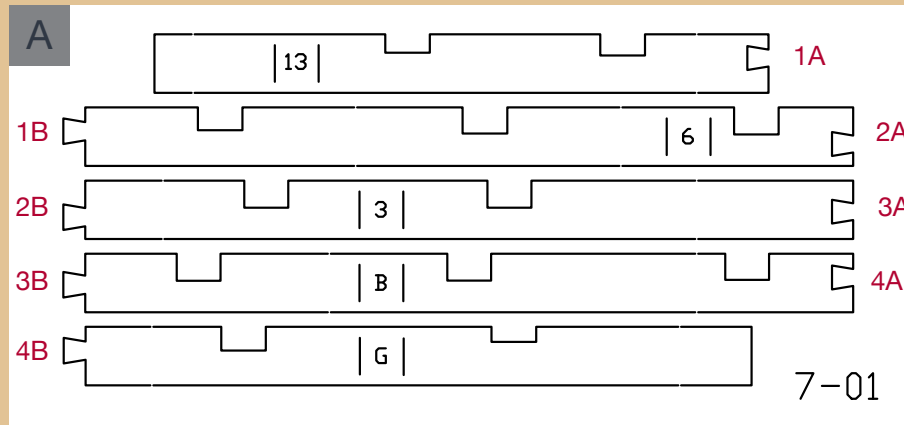
Glue the planking thus obtained in the position shown, in the bow of the model.



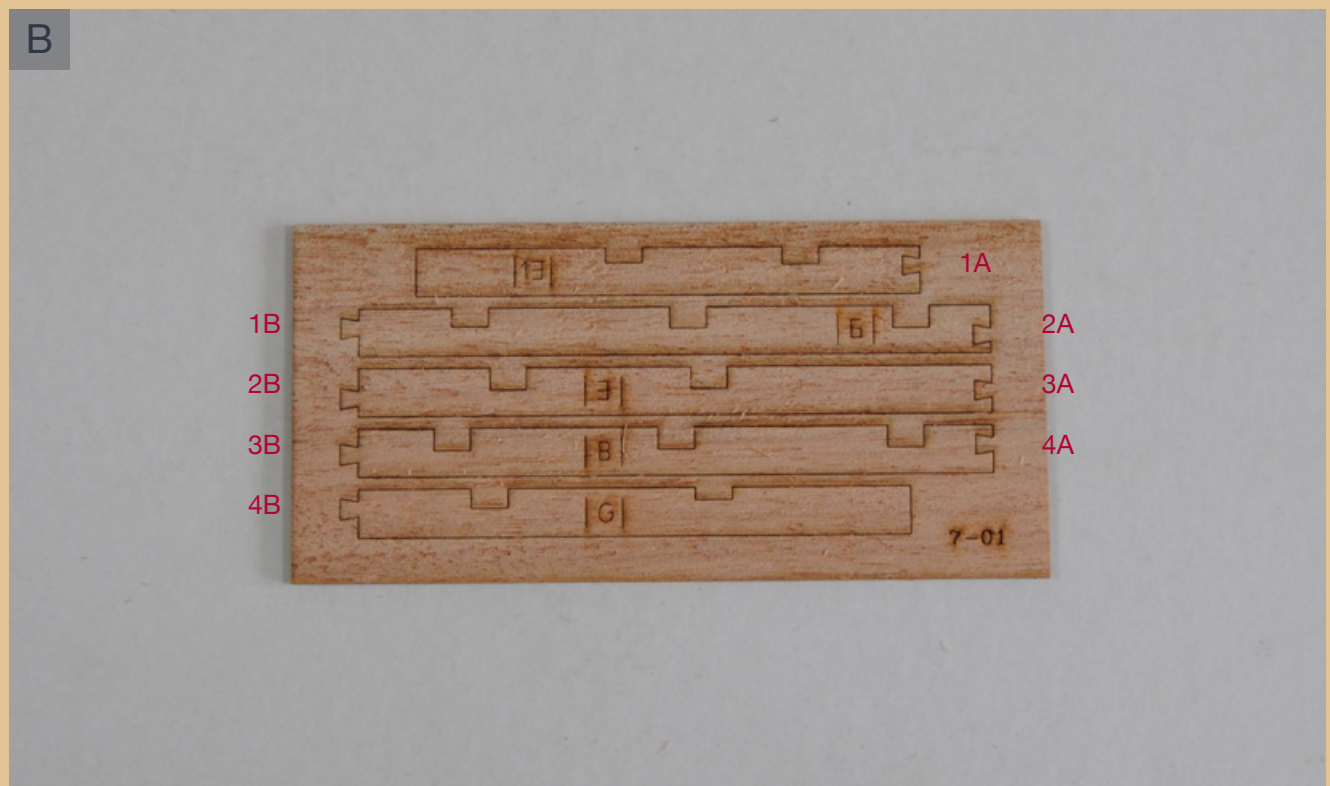
3 The bow planking correctly positioned.

PHASE 67

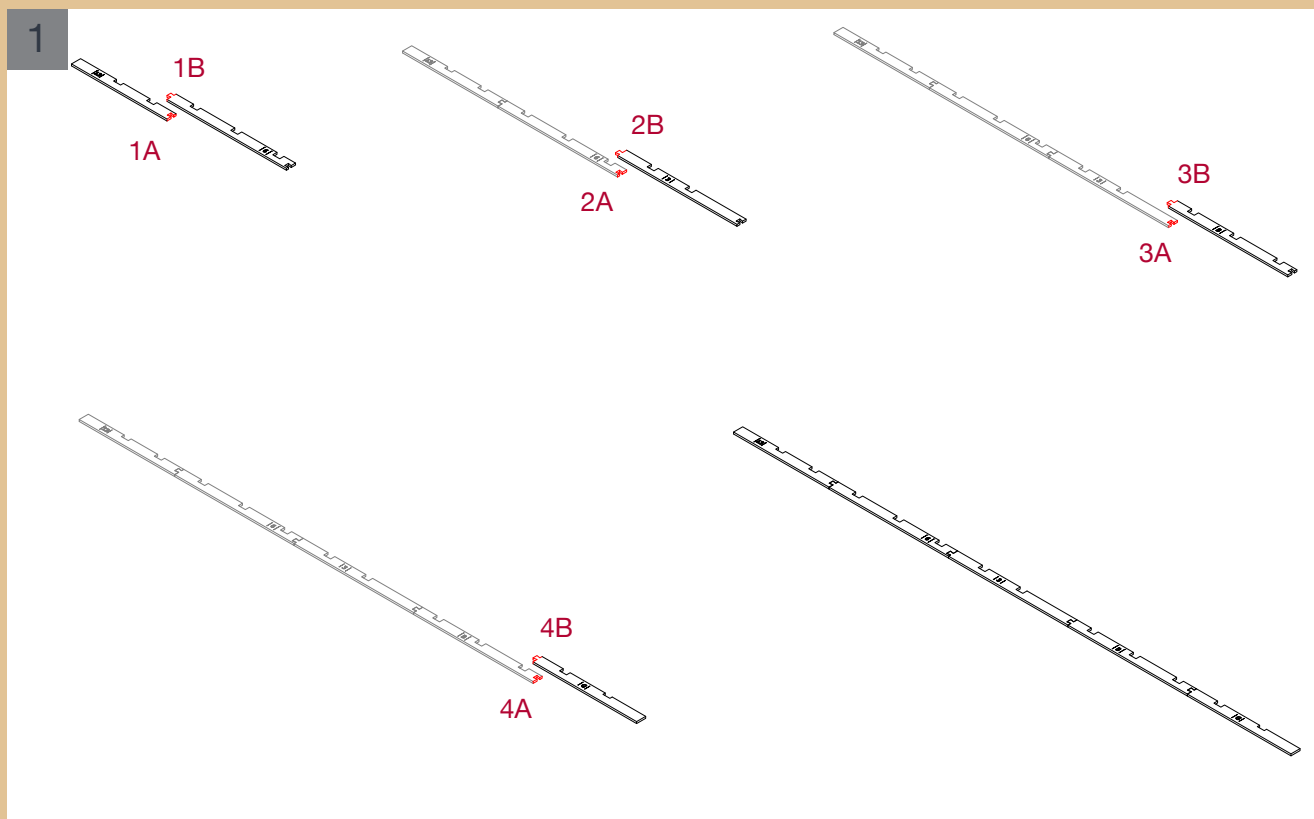
LATERAL SUPPORT 01



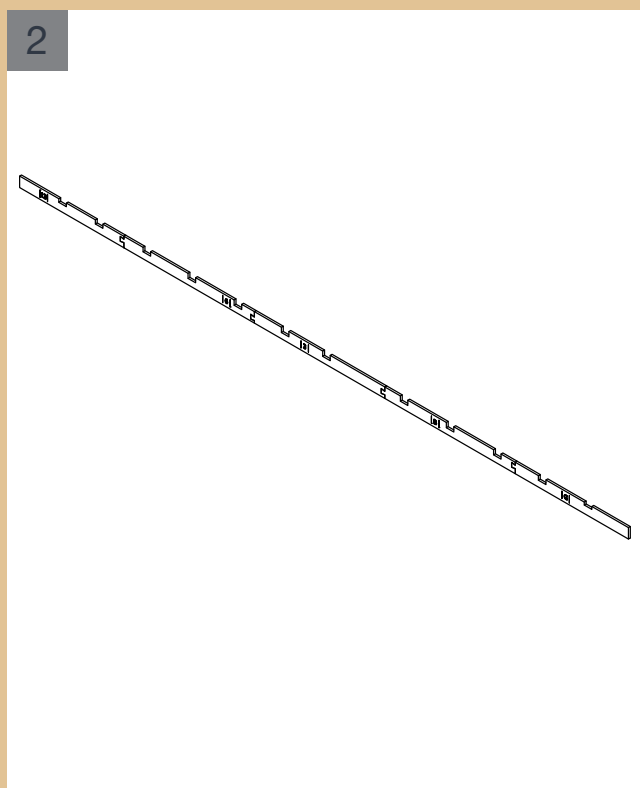
A Drawing of tablet 7-01



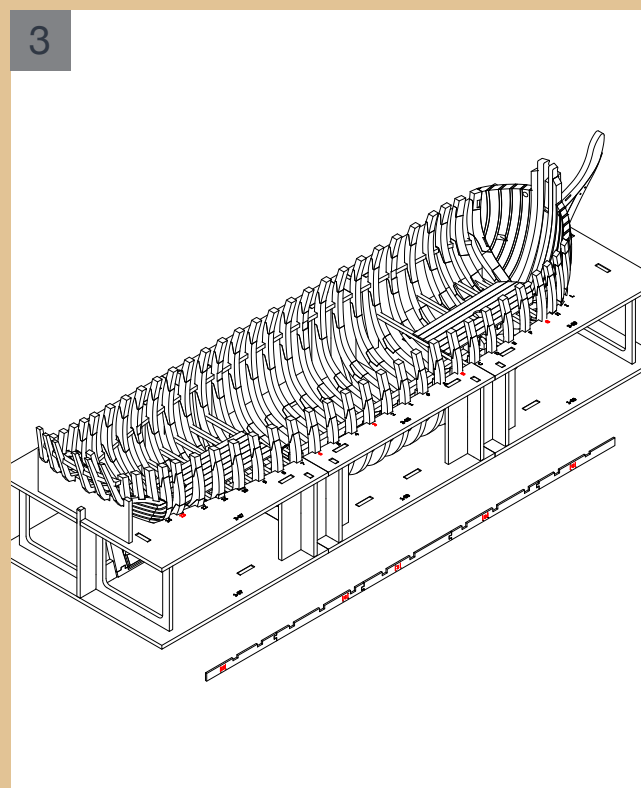
B The numbers in the illustration show the assembly sequence for the lateral support: 1A is glued with 1B, 2A with 2B, 3A with 3B, and 4A with 4B. The joints are positioned at different heights to avoid errors.



1 Join together the segments of the lateral support by applying a drop of glue to the parts indicated in red.

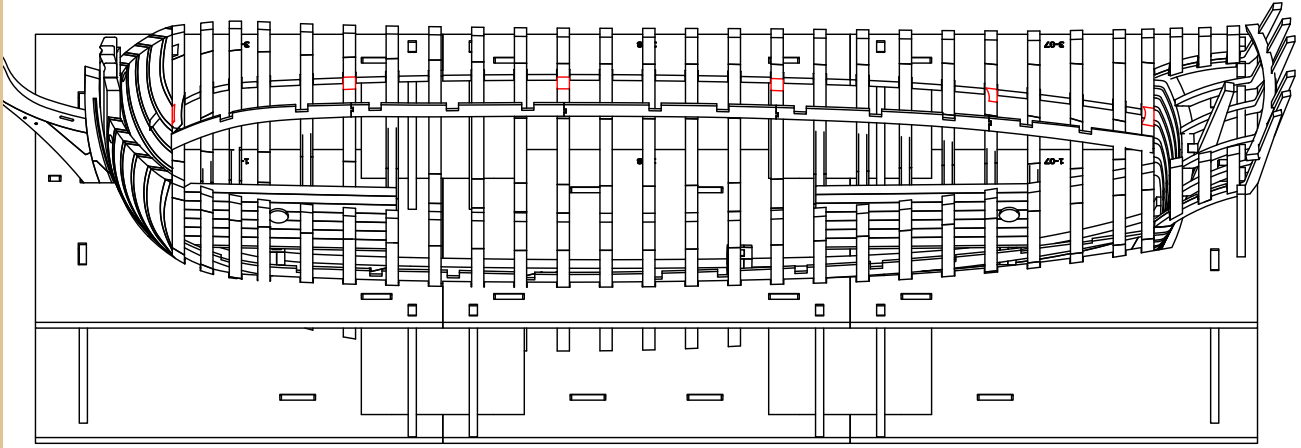


2 The numbers and letters on the support must match up with the respective frames.



3 The side of the lateral support that has numbers and letters on it should face the wall of the model, so that the references are not visible.

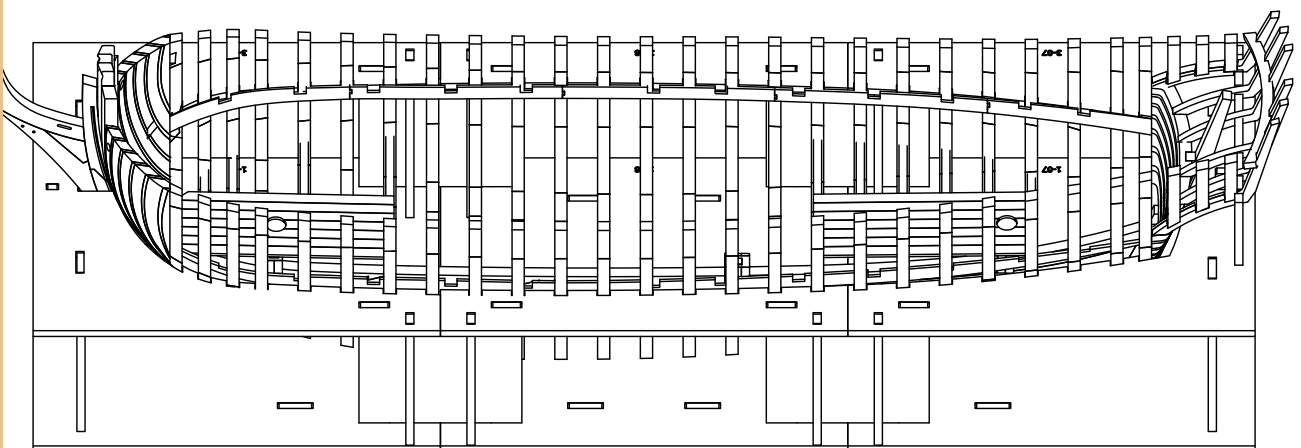
4



4

Frames L- E - # - 5-10-14 have notches (highlighted in red in the illustration). Apply a drop of glue to all the notches shown and place the first lateral support on them. For safety, we recommend that you apply a little glue to all the frames, at the same height as the notches, before putting the support in place.

5

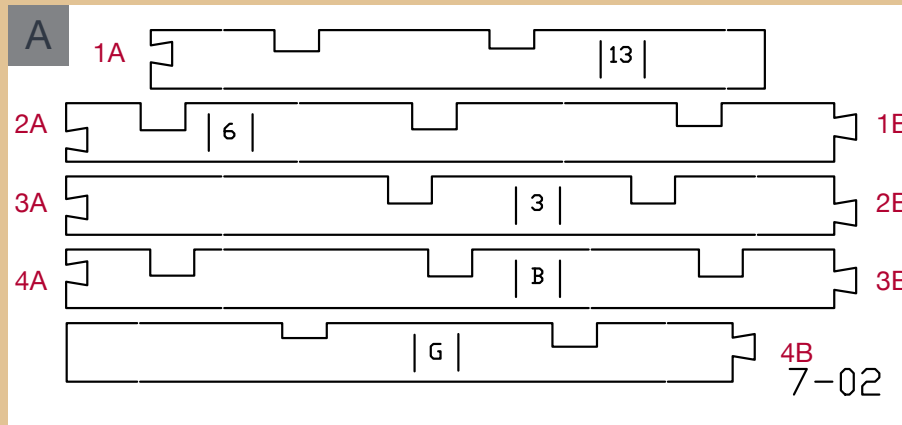


5

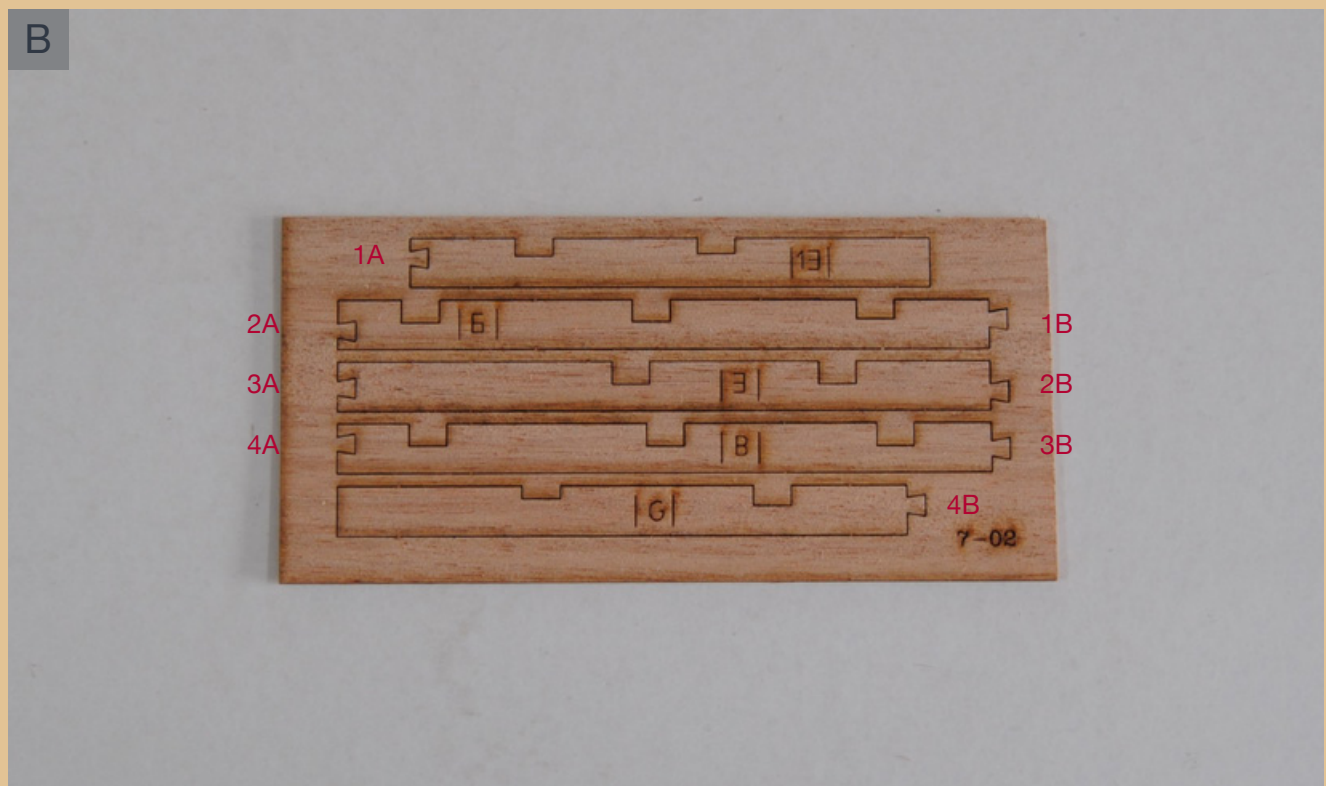
The first lateral support correctly positioned.

PHASE 68

LATERAL SUPPORT 02

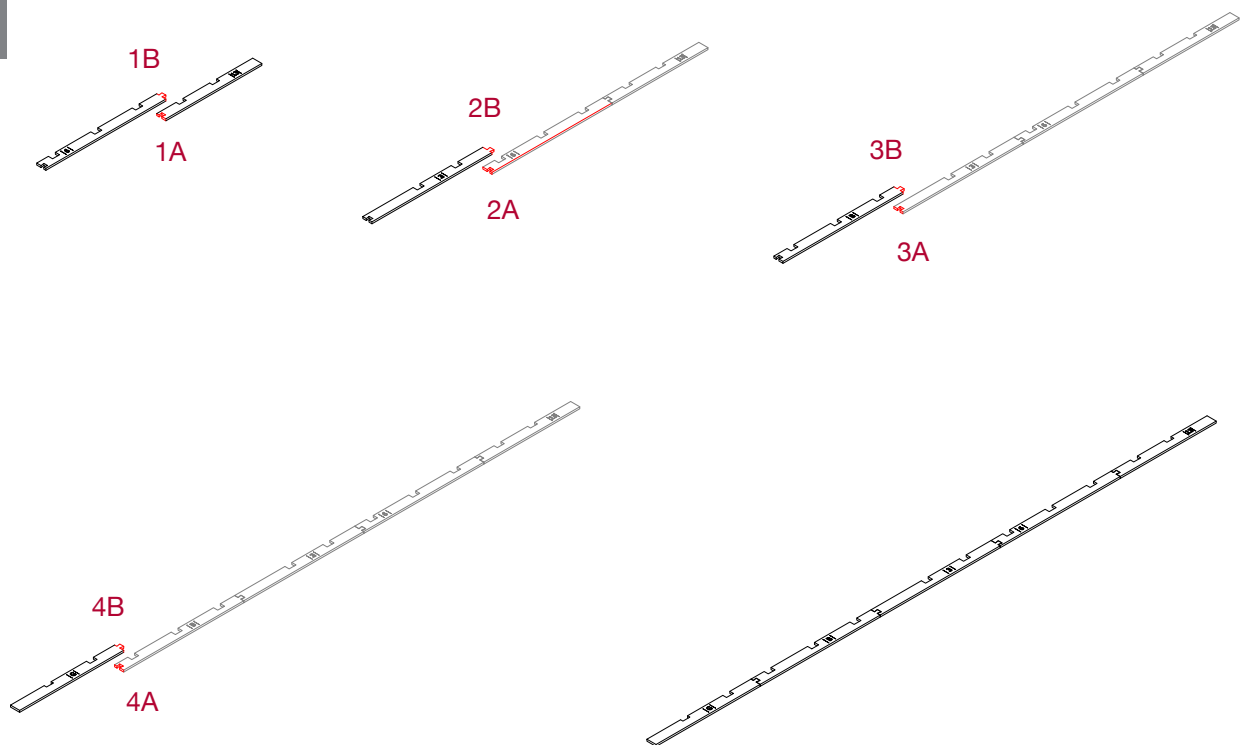


A Drawing of tablet 7-02.



B The numbers in the illustration show the assembly sequence for the lateral support: 1A is glued with 1B, 2A with 2B, 3A with 3B, and 4A with 4B. The joints are positioned at different heights to avoid errors.

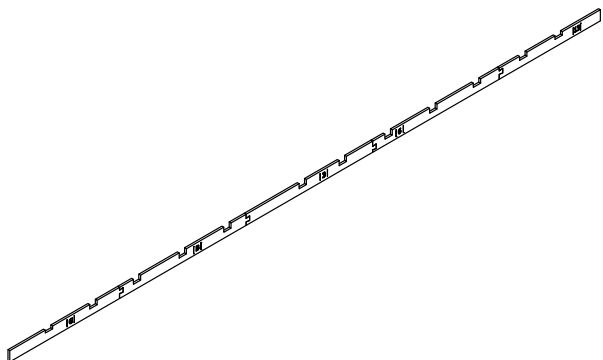
1



1

Join together the segments of the lateral support by applying a drop of glue to the parts indicated in red.

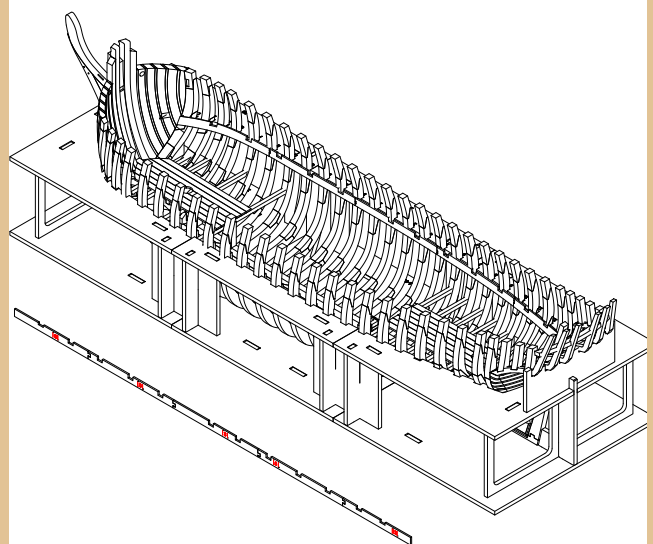
2



2

The numbers and letters on the support must match up with the respective frames.

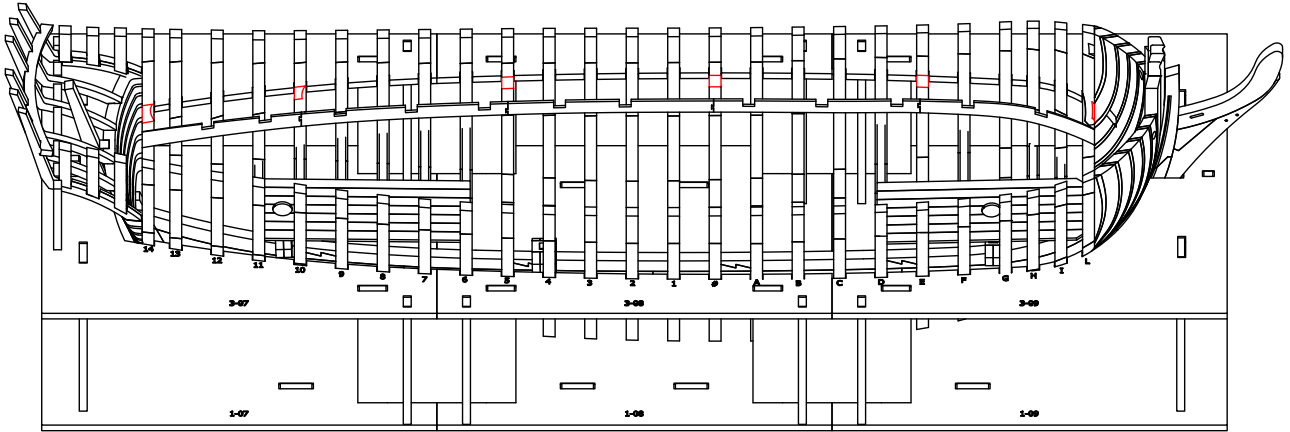
3



3

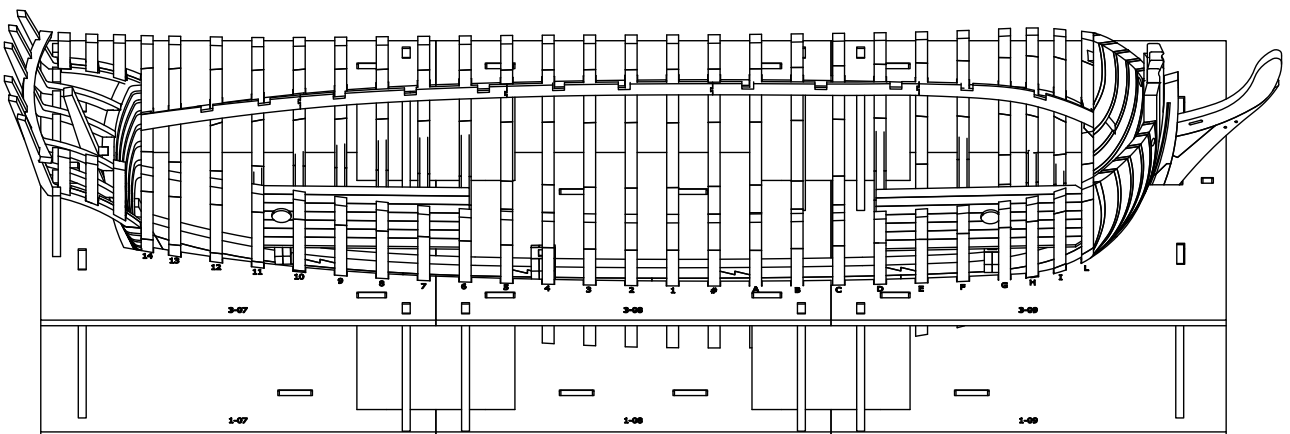
The side of the lateral support that has numbers and letters on it should face the wall of the model, so that the references are not visible.

4



- 4 Frames L- E - # - 5-10-14 have notches (highlighted in red in the illustration). Apply a drop of glue to all the notches shown and place the first lateral support on them. For safety, we recommend that you apply a little glue to all the frames, at the same height as the notches, before putting the support in place.

5



- 5 The second lateral support correctly positioned.

6



6

The bow area with the lateral supports installed.

7



7

The stern area with the lateral supports installed.