



Build the

T1 Samba Camper

Pack 1



D'AGOSTINI
MODELSPACE
www.model-space.com





Build the

T1 Samba Camper

STAGE

PAGE

- | | | |
|---|-----------------------------------|----|
| 1 | The body front | 3 |
| 2 | The left front wheel | 7 |
| 3 | The front bumper and engine cover | 11 |
| 4 | The left front door | 15 |
| 5 | The left front door window | 19 |

Editorial and design by Continuo Creative, 39-41 North Road, London N7 9DP.

Published in the UK by De Agostini UK Ltd, Battersea Studios 2, 82 Silverthorne Road, London SW8 3HE.

Published in the USA by De Agostini Publishing USA, Inc., 121 E. Calhoun Street, Woodstock, IL 60098.

All rights reserved © 2018

Warning: Not suitable for children under the age of 14.

This product is not a toy and is not designed or intended for use in play.

Items may vary from those shown.

STAGE 1: THE BODY FRONT

YOUR PARTS

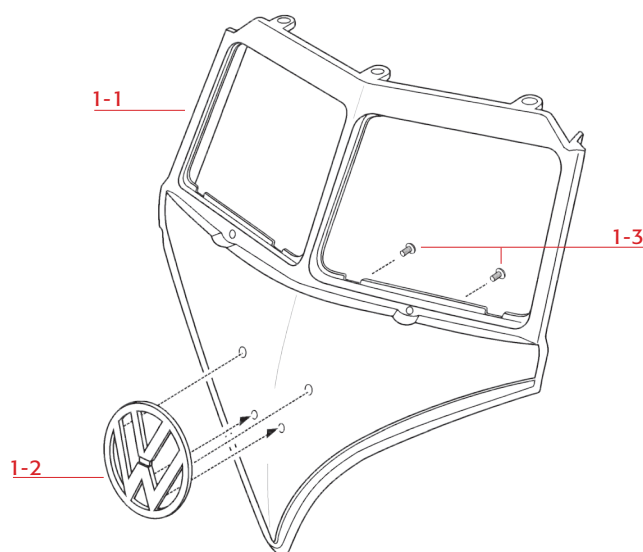
- 1-1 Body front
- 1-2 Volkswagen logo
- 1-3 Screws 1.3 x 3.5mm (BP01)



Screws

Whenever screws are provided throughout this series, you will receive the number you need for that stage, plus one spare. Always keep the spares in a safe place, and label them clearly so that you can identify them if you need them.

DIAGRAM



NOTE: The appearance of the model and parts in this assembly guide are based on the prototype and are subject to change, so they may differ slightly from those shown.

CHARACTERISTICS OF THE MODEL

The majority of the assembly of the VW Samba is achieved by screwing or fitting the pieces together. For this, you will only need a basic set of precision screwdrivers. However, some side cutters and a pair of pliers or tweezers will be useful for mounting certain parts.

THE BODY

The body parts are made of metal, which provides an excellent, realistic finish and gives strength to the structure of the model.



THE WHEELS

The wheels consist of cast-metal rims, fitted with rubber tyres with accurately reproduced tread designs and sidewall details.

THE ROOF

The characteristic sunroof has been reproduced in fabric, which perfectly mimics the original canvas and folds in the same way.

THE INTERIOR

Inside, the seat upholstery, door trim, interior and floor match the details and colours of the original vehicle.

THE WINDOWS

The front windows slide, allowing them to open and close fully to give more realism to the model.

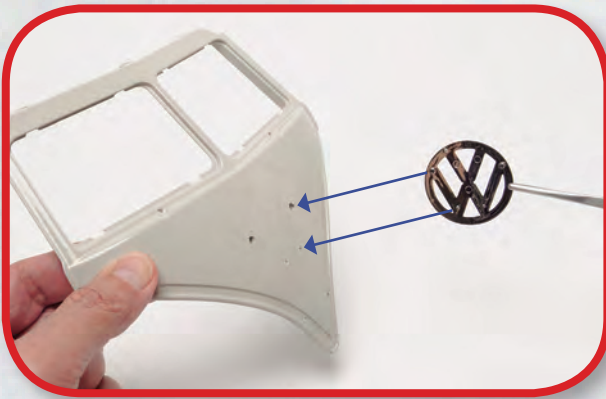


THE DOORS

The doors are mounted on metal hinges that allow them to open and close, while retaining the strength and fit of the rest of the model.

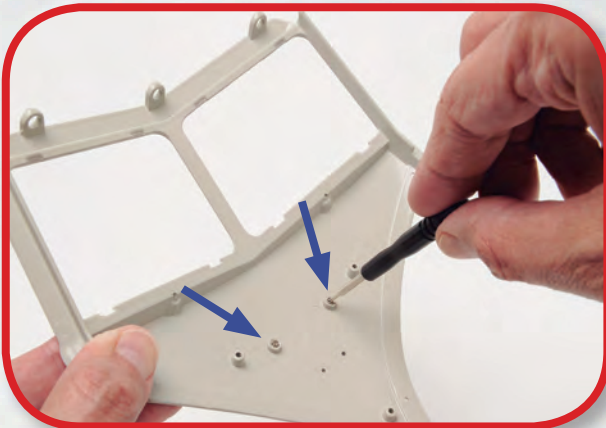
THE CHASSIS

The metal chassis carries the engine and the main front and rear suspension components, also made of metal.



STEP 1-A

Fit the Volkswagen logo (1-2) onto the body front (1-1) by inserting the pins on the back of it into the indicated holes.



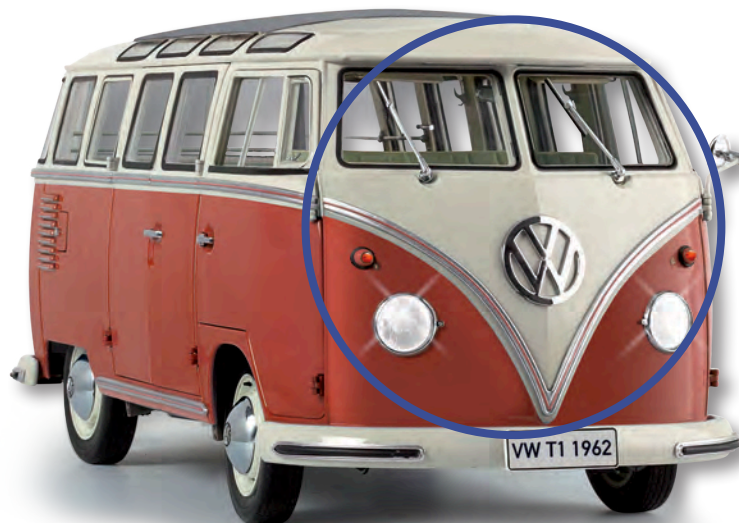
STEP 1-B

Secure the logo to the body front with two BP01 screws (1-3), inserted through the indicated holes on the inside of the body front.



STAGE COMPLETE

WHERE THE PARTS FIT



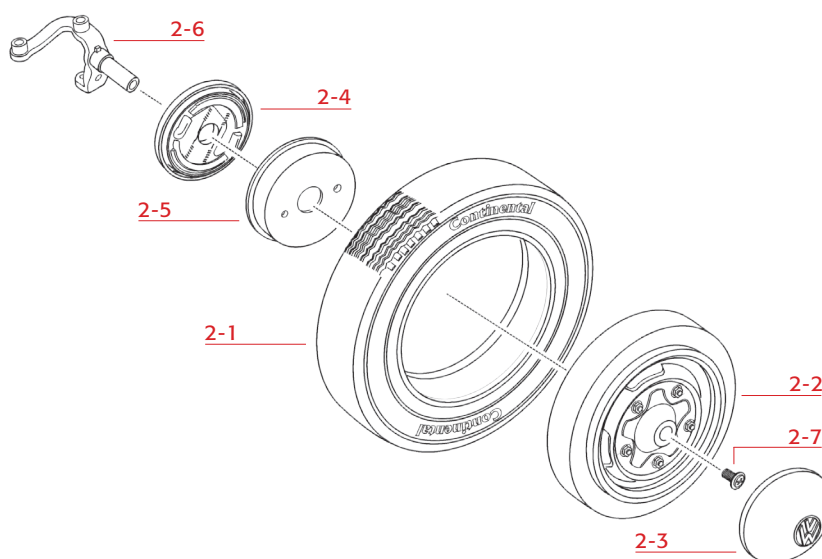
STAGE 2: THE LEFT FRONT WHEEL

YOUR PARTS

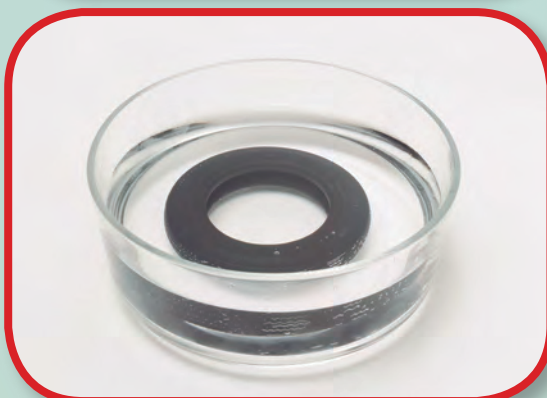
- 2-1** Tyre
- 2-2** Wheel
- 2-3** Hubcap
- 2-4** Brake
- 2-5** Brake drum
- 2-6** Hub
- 2-7** Screw 2.3 x 3 x 6.5mm (BD01)
- 2-8** Screwdriver



DIAGRAM



TYRES



To make it easier to fit the tyre onto the wheel, either heat it slightly with a hair dryer or immerse it in hot water for a few minutes. Doing this will make the tyre softer and more pliable while you fit it, and it will harden again as it cools.



STEP 2-A

Insert the wheel (2-2) into the tyre (2-1). See the 'TYRES' box on the left.



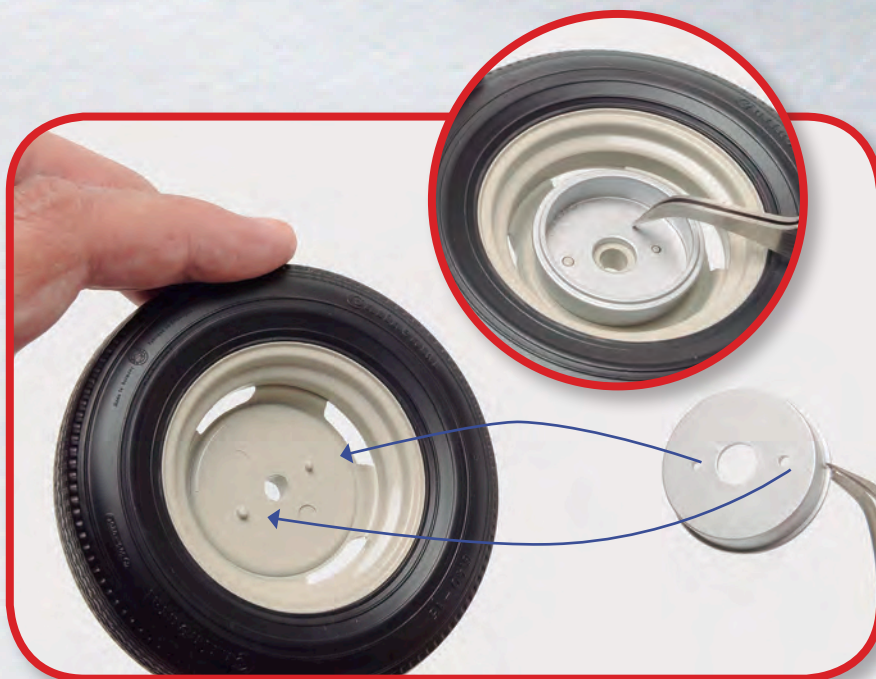
STEP 2-B

Lift the wall of the tyre over the edge of the wheel. Then turn the two around and repeat on the other side.

STEP 2-C

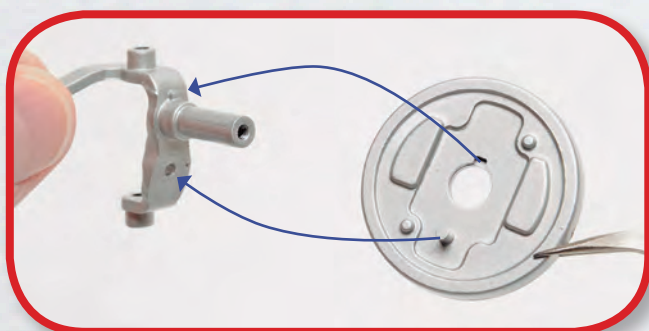
Check that the edges of the tyre are positioned correctly on both sides of the wheel.





STEP 2-D

Fit the brake drum (2-5) to the inside of the wheel by placing it onto the pins, as shown. The pins are different sizes, so the drum will only fit in one orientation.



STEP 2-E

Now fit the brake (2-4) and the hub (2-6) together, engaging the indicated parts.



STEP 2-F

Insert the shaft of the hub into the hole in the centre of the drum and wheel.



STEP 2-G

Secure the parts together with a BD01 screw (2-7).



STEP 2-H

Hold the hub with one hand, and check that the wheel can turn freely. Loosen the screw slightly if it can't.

VW Samba

STEP 2-I

Place the hubcap (2-3) on the outside of the wheel. The hubcap is held in place by a magnet.



STEP 2-J

Press the hubcap lightly to ensure that it's in the correct position and the magnet is holding it in place.



STAGE COMPLETE

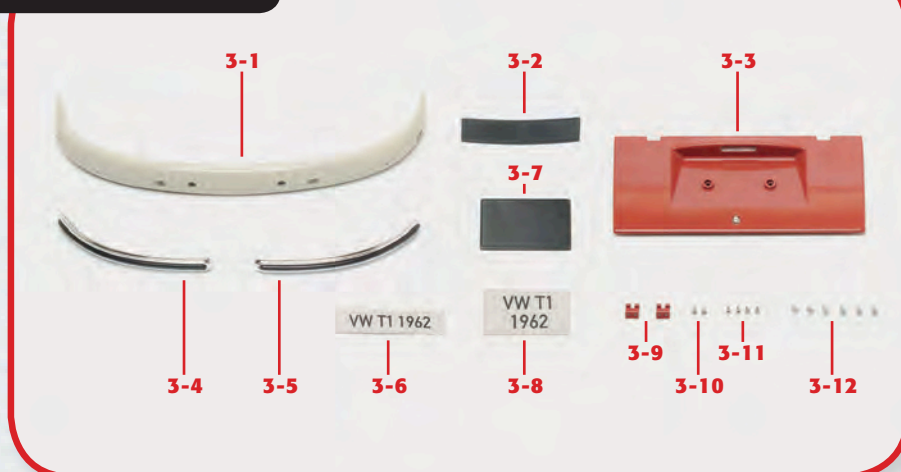
WHERE THE PARTS FIT



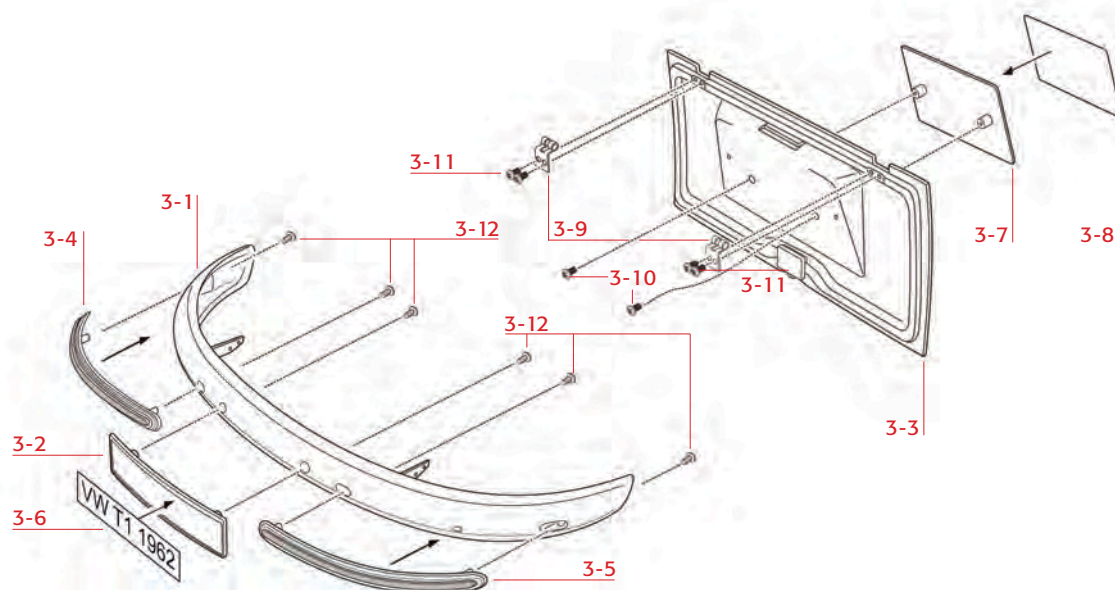
STAGE 3: THE FRONT BUMPER AND ENGINE COVER

YOUR PARTS

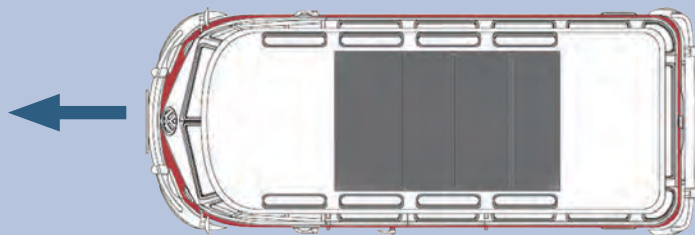
- 3-1 Front bumper
- 3-2 Front number plate mount
- 3-3 Engine cover
- 3-4 Right front bumper insert
- 3-5 Left front bumper insert
- 3-6 Front number plate
- 3-7 Rear number plate mount
- 3-8 Rear number plate
- 3-9 Hinges
- 3-10 Screws 1.2 x 3.5mm (BP01)
- 3-11 Screws 1.2 x 3mm (BD02)
- 3-12 Screws 2.1 x 4mm (BP02)



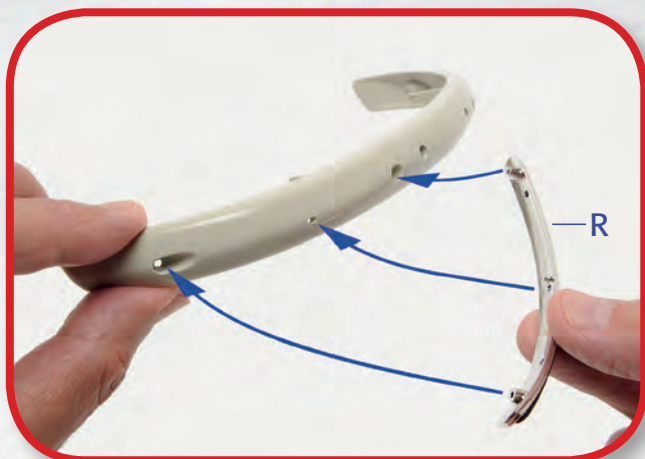
DIAGRAM



LEFT AND RIGHT

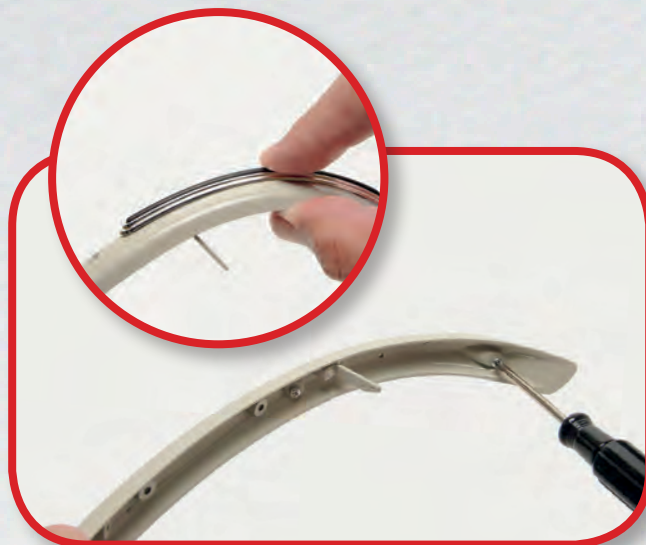


During the assembly, when right or left are mentioned, this refers to your right and left if you were sitting at the wheel of the vehicle.



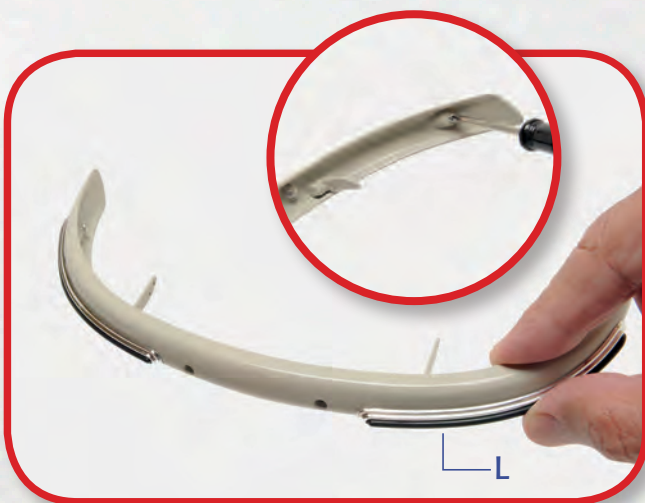
STEP 3-A

Fit the front right bumper insert (3-4) – indicated by the letter 'R' – to the right end of the front bumper (3-1), inserting the posts into the corresponding holes.



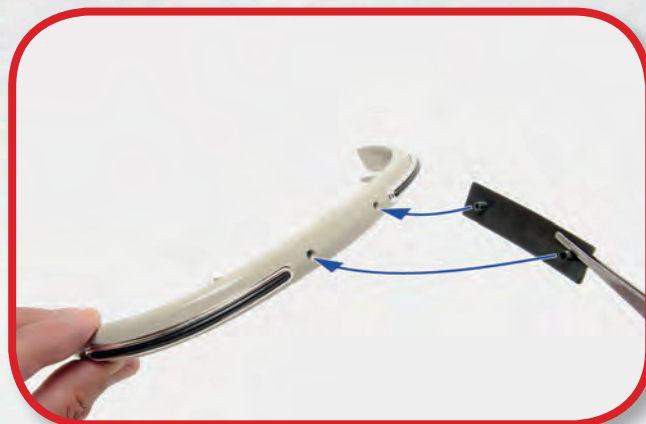
STEP 3-B

Secure the right bumper insert from the inside of the front bumper with two BP02 screws (3-12).



STEP 3-C

Mount the left bumper insert (3-5) to the front bumper in the same way as the right, and secure it with two BP02 screws (3-12).

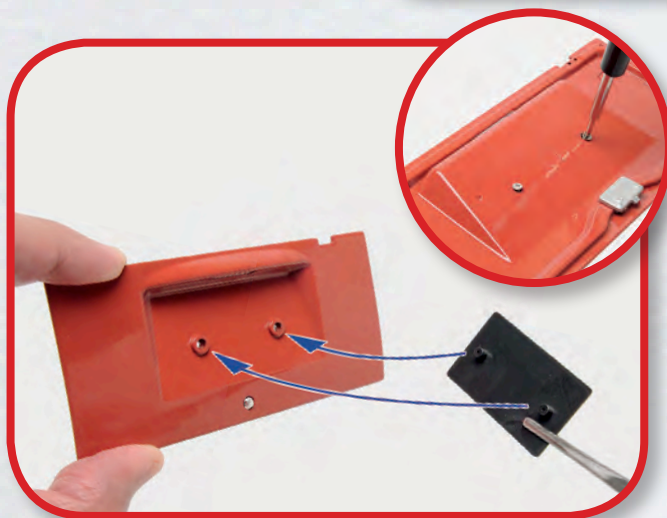
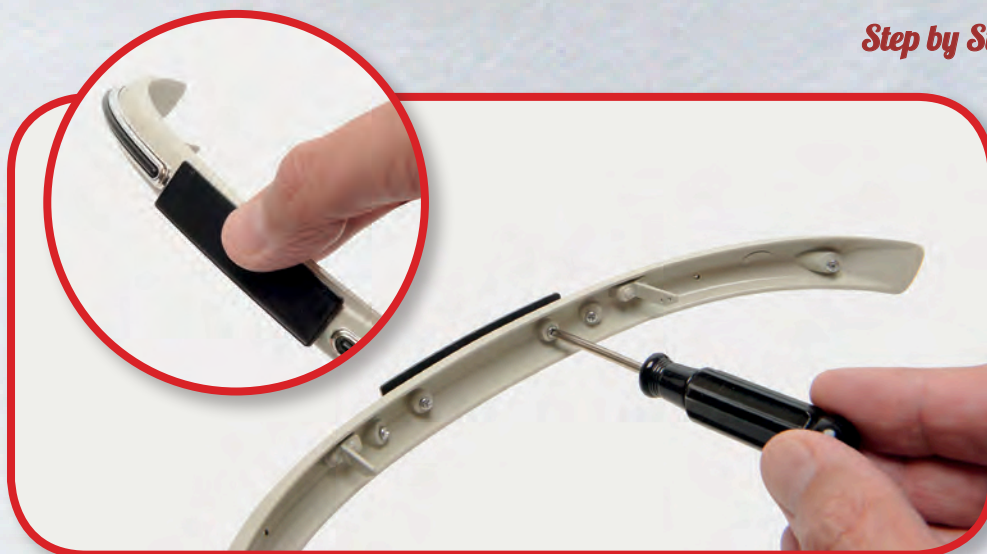


STEP 3-D

Insert the two posts on the front number plate mount (3-2) into the two central holes in the front bumper.

STEP 3-E

Secure the mount to the bumper with two BP02 screws (3-12).



STEP 3-F

Insert the posts on the rear number plate mount (3-7) into the indicated holes in the engine cover (3-3). Secure the mount with two screws BP01 (3-10).



STEP 3-G

Place one of the hinges (3-9) onto the indicated point on the engine cover, aligning the holes of both parts.

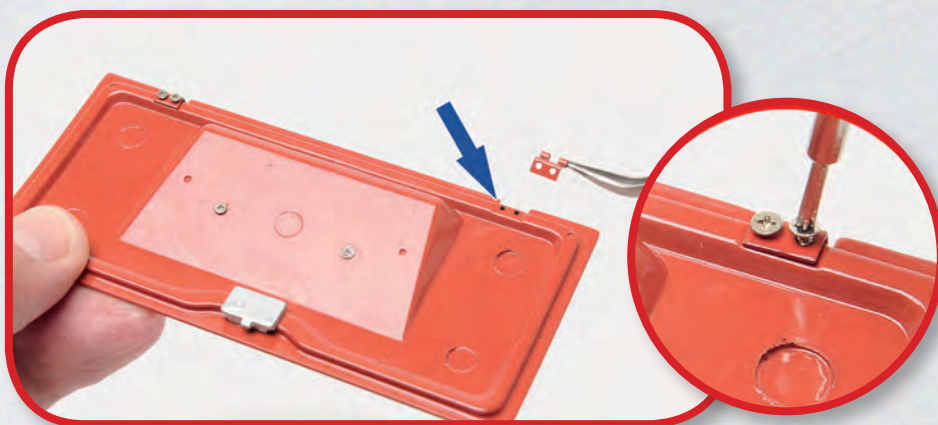
STEP 3-H

Secure the hinge to the engine cover with two BD02 screws (3-11).



STEP 3-I

Fit the second hinge (3-9) at the other end of the engine cover, securing it with two BD02 screws (3-11).



STEP 3-J

Remove the backing paper from the front (3-6) and rear (3-8) number plates, and fit them onto their respective mounts.

STAGE COMPLETE

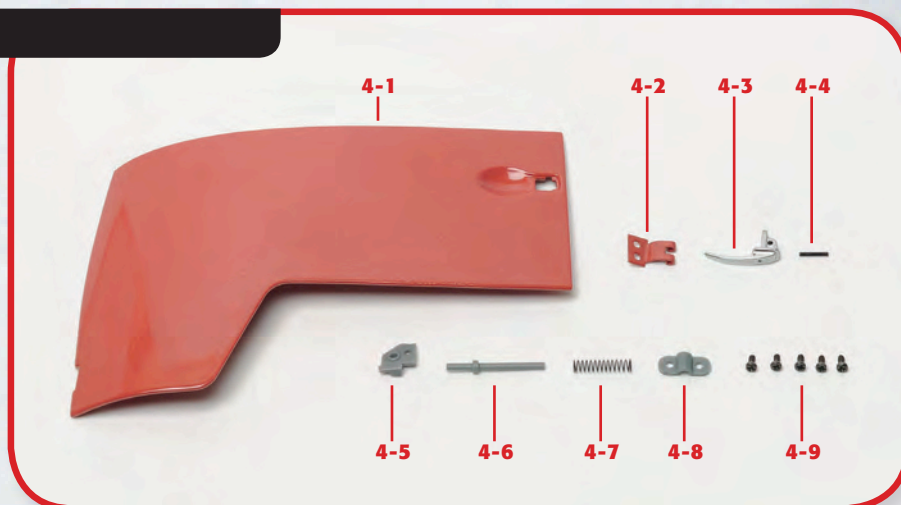
WHERE THE PARTS FIT



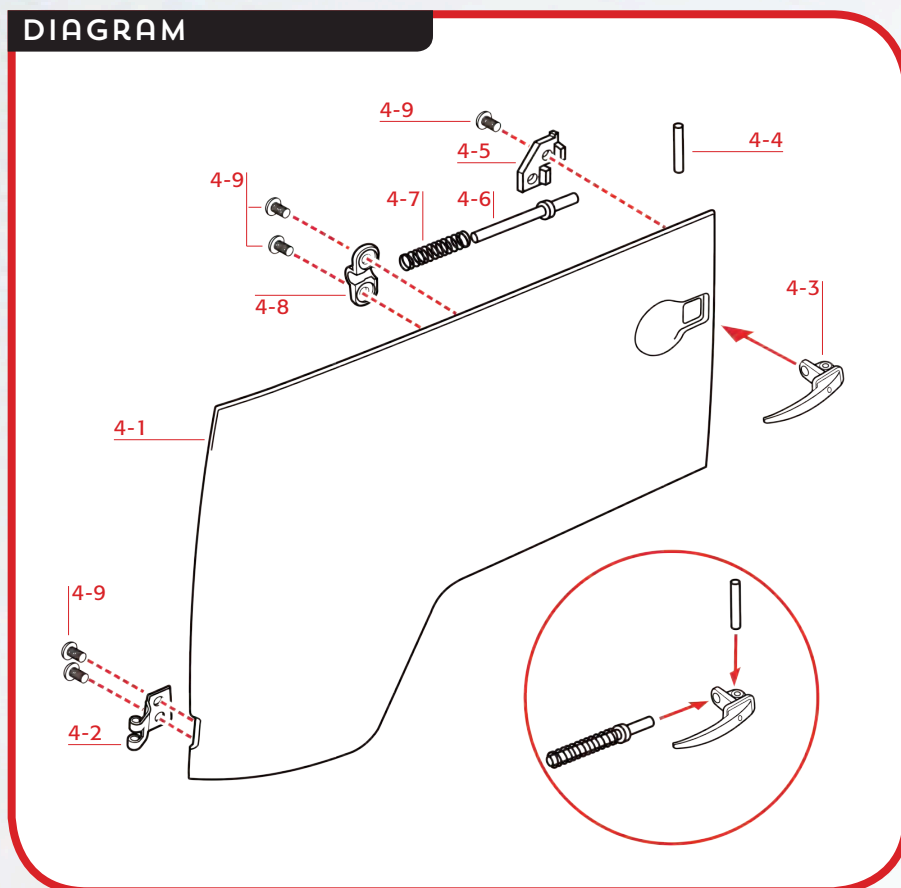
STAGE 4: THE LEFT FRONT DOOR

YOUR PARTS

- 4-1 Left front door
- 4-2 Hinge
- 4-3 Handle
- 4-4 Pin
- 4-5 Bracket
- 4-6 Rod
- 4-7 Spring
- 4-8 Rod guide
- 4-9 Screws 1.8 x 3.5mm (BD03)



DIAGRAM



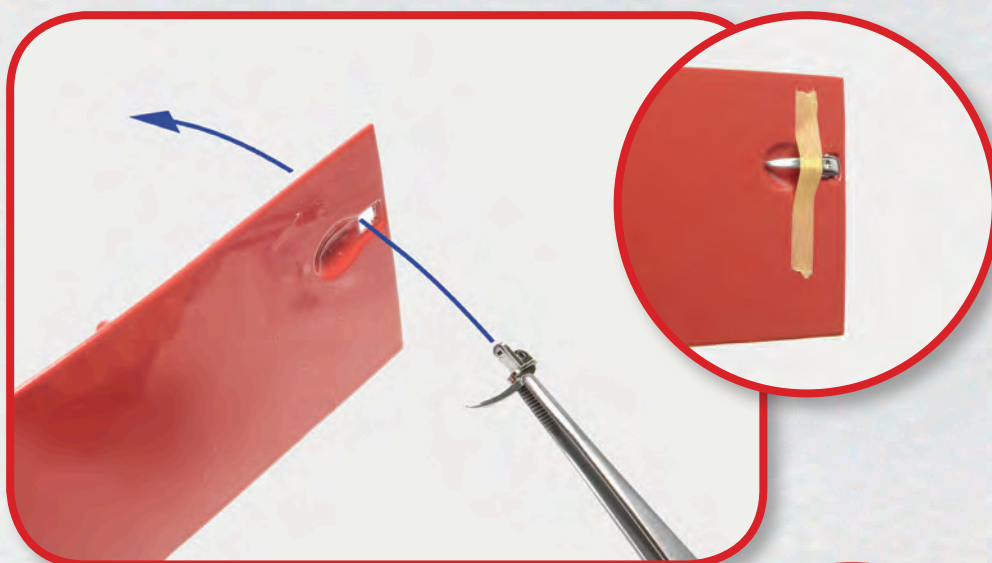
STEP 4-A

Place the hinge (4-2) onto the indicated point on the inside of the left front door (4-1), and secure it with two BD03 screws (4-9).



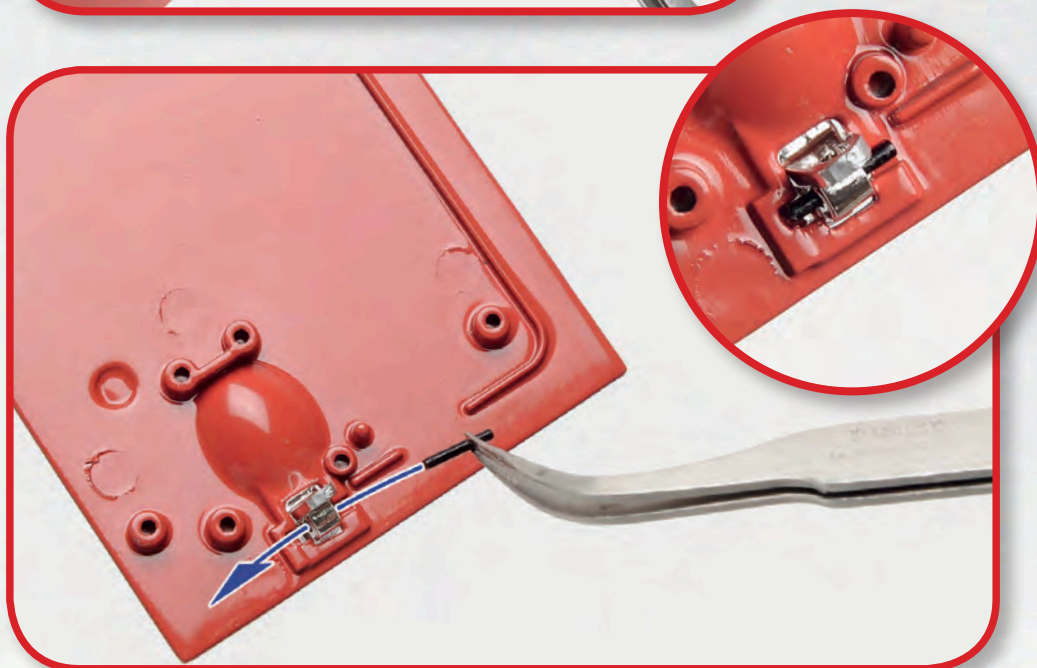
STEP 4-B

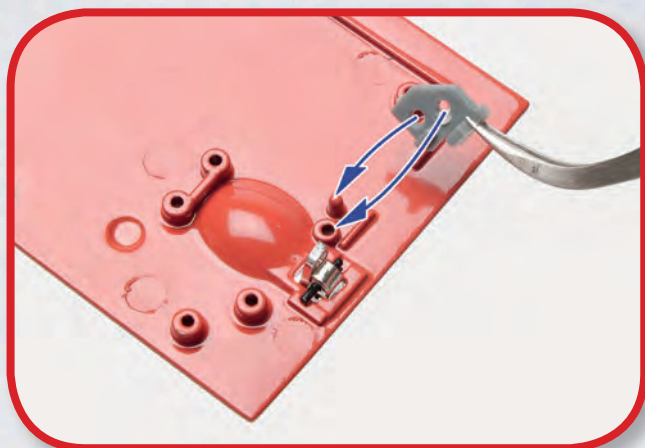
Insert the handle (4-3) through the opening in the door, as shown. Temporarily secure it with some masking tape (inset).



STEP 4-C

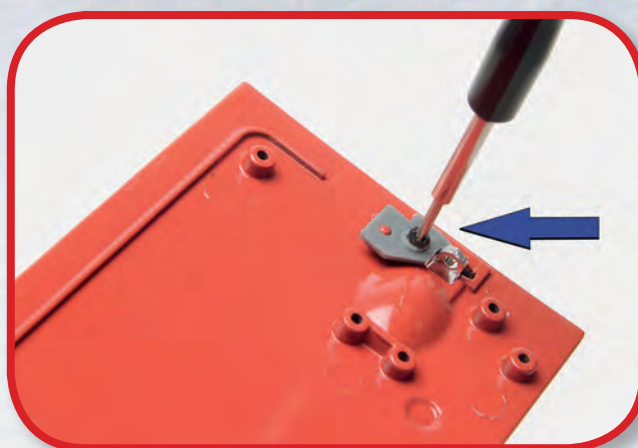
Insert the pin (4-4) through the part of the handle on the inside of the door.





STEP 4-D

Place the bracket (4-5) onto the pin and the post on the inside of the door.

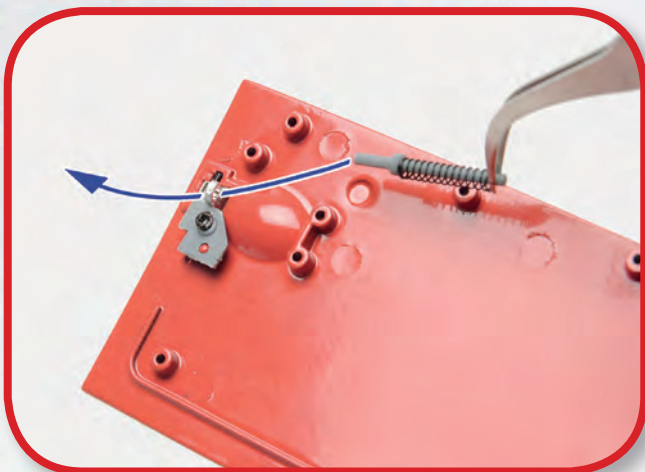


STEP 4-E

Secure the bracket with a BD03 screw (4-9).

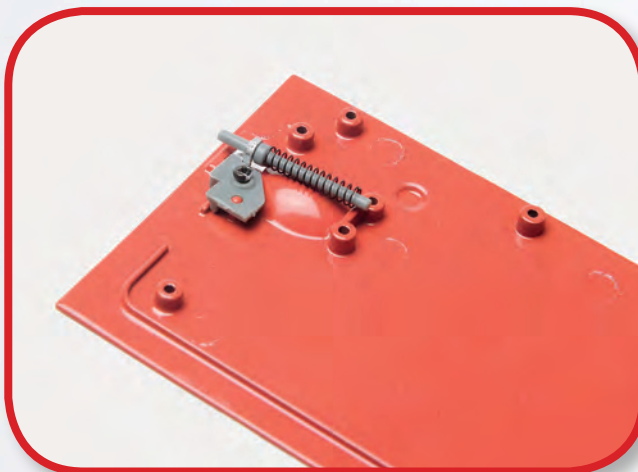
STEP 4-F

Then insert the rod (4-6) into the spring (4-7).



STEP 4-G

Insert the free end of the rod through the opening in the handle, as shown.

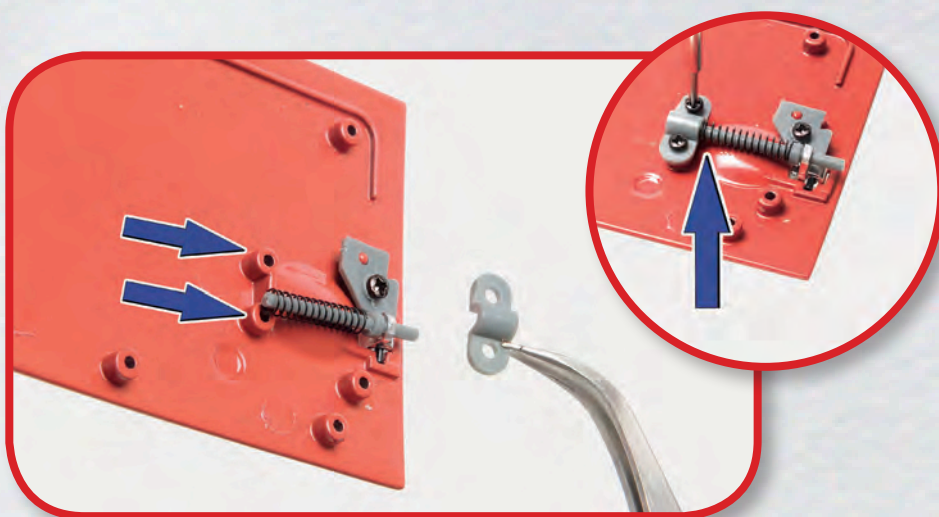


STEP 4-H

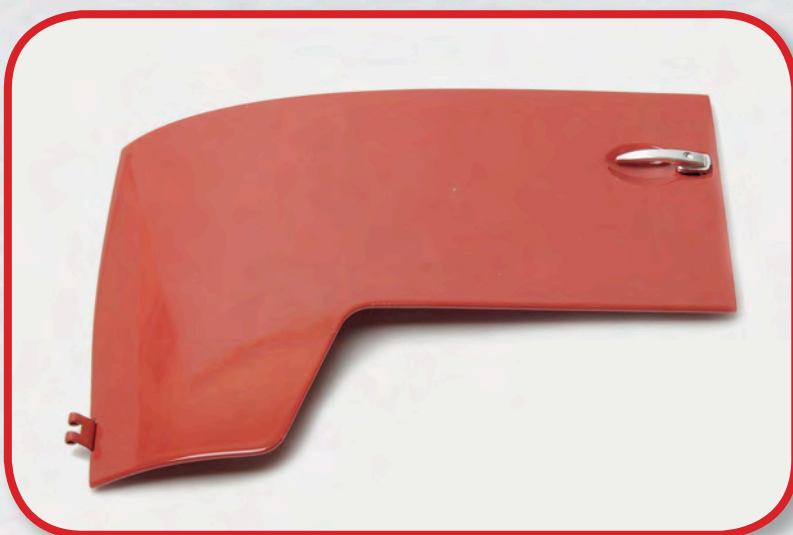
Here is how the rod should be positioned once inserted.

STEP 4-I

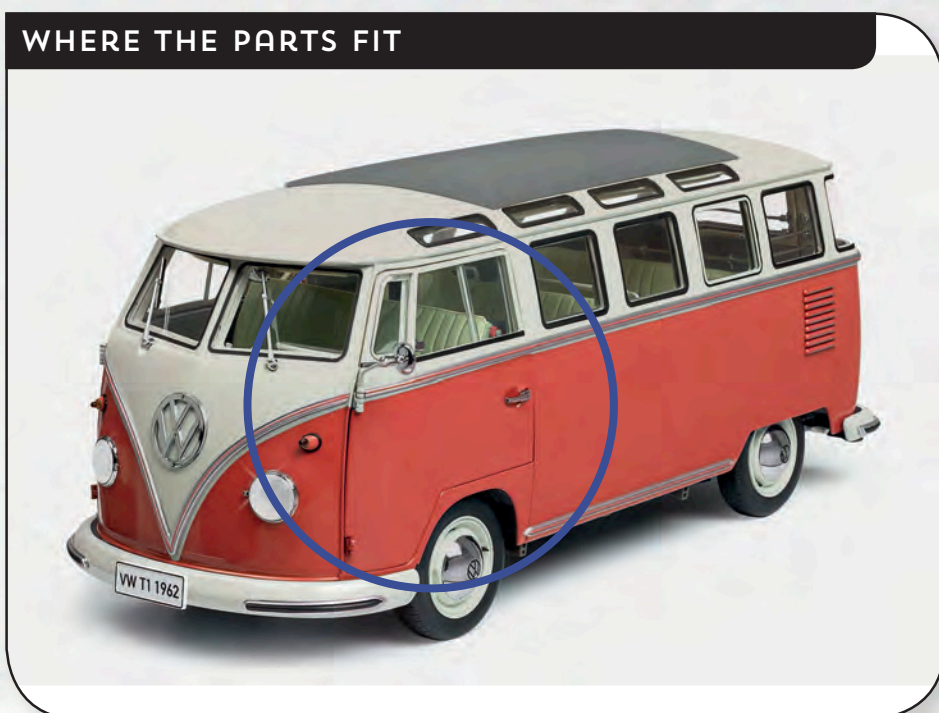
Finally, mount the rod guide (4-8) onto the posts on either side of the rod, and secure it with two BD03 screws (4-9). The spring should be pulled back so that it is outside of the guide.



STAGE COMPLETE



WHERE THE PARTS FIT



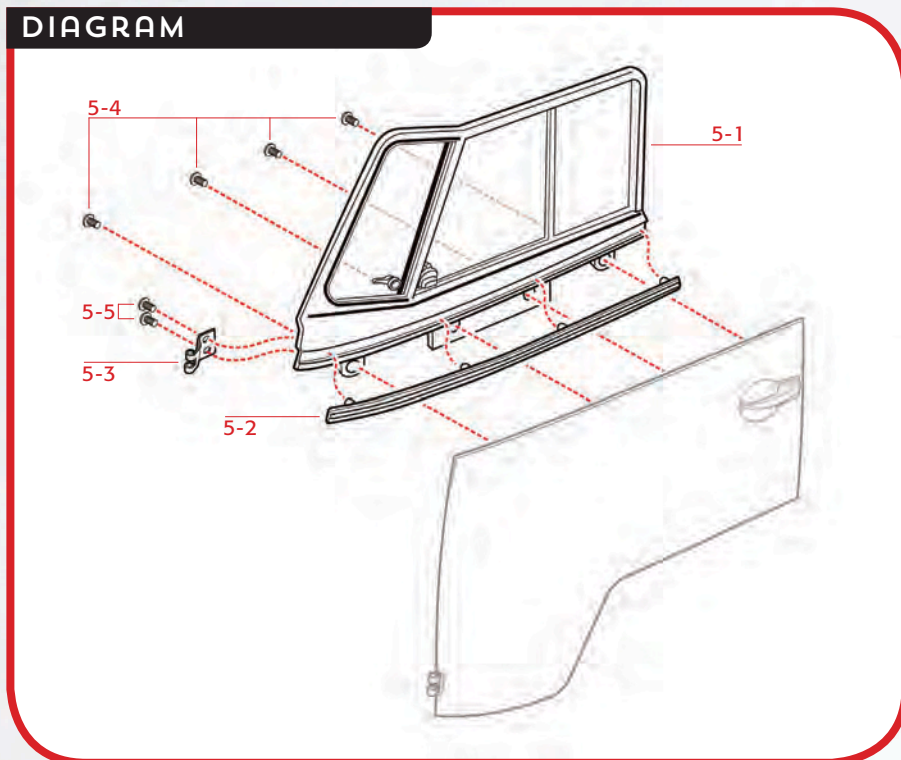
STAGE 5: THE LEFT FRONT DOOR WINDOW

YOUR PARTS

- 5-1 Left front door window frame
- 5-2 Trim
- 5-3 Upper door hinge
- 5-4 Screws 1.8 x 3.5mm (BD03)
- 5-5 Screws 1.8 x 4.0mm (BP03)

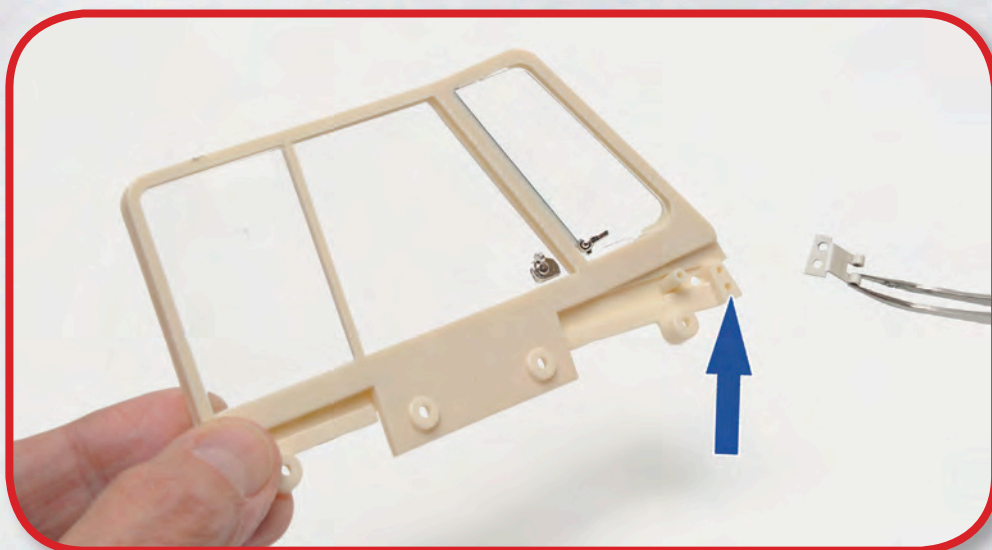


DIAGRAM



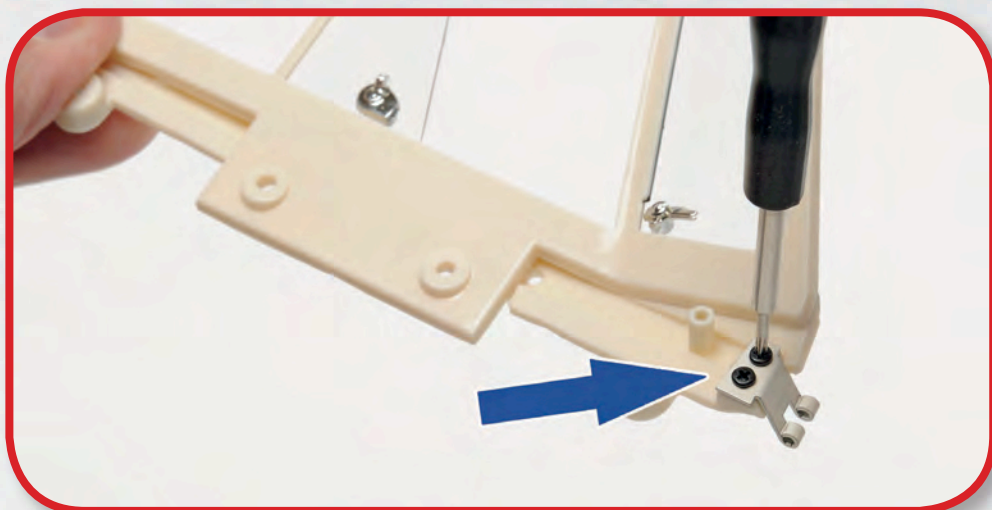
STEP 5-A

Align the holes of the upper door hinge (5-3) with those indicated in the left front door window frame (5-1).



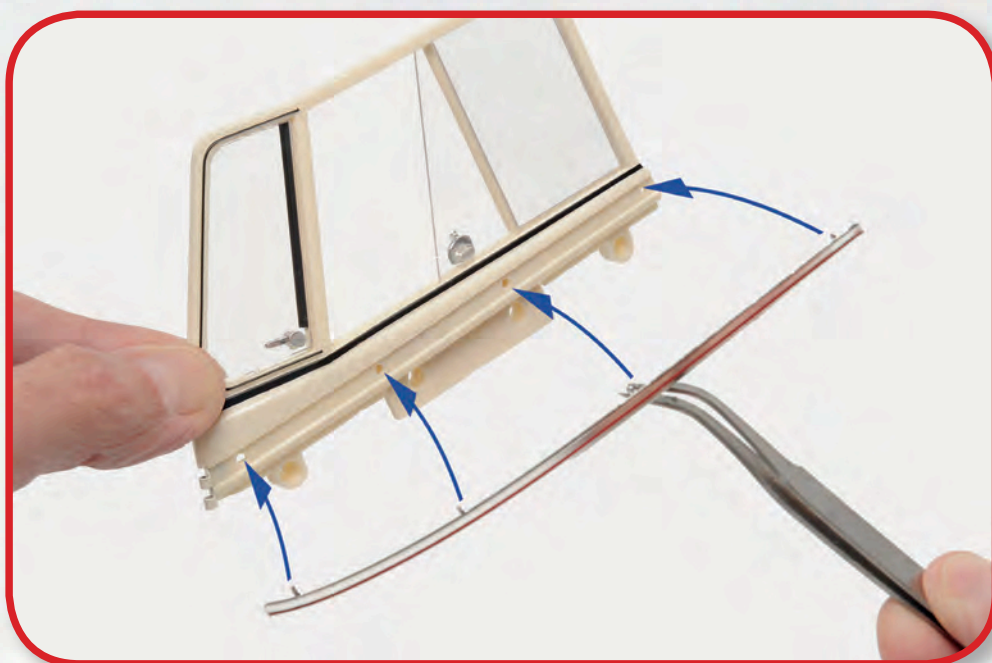
STEP 5-B

Secure the hinge to the frame with two BP03 screws (5-5).



STEP 5-C

Position the trim (5-2) into the groove along the outside of the frame, aligning the pins and corresponding holes.



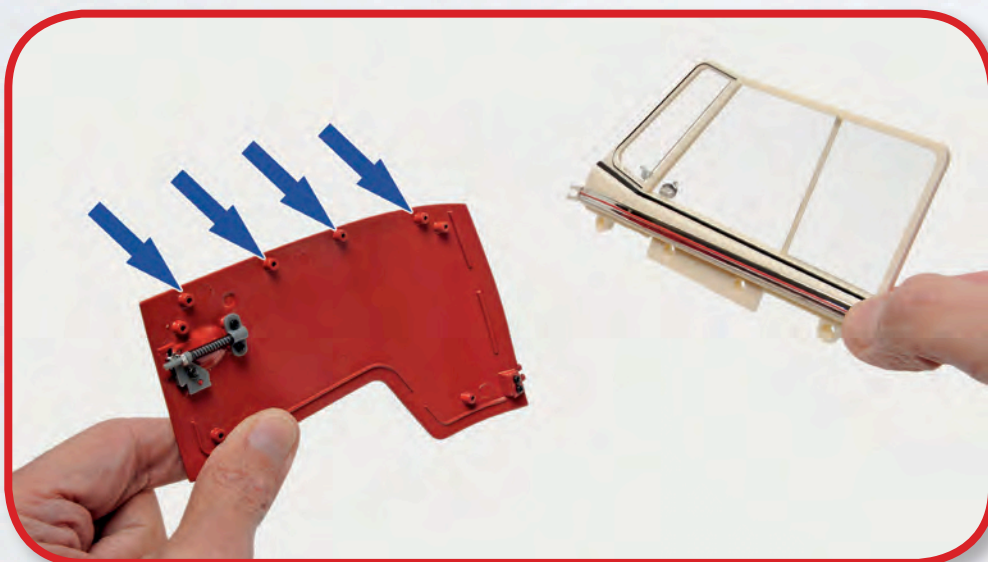
STEP **5-D**

Carefully press the trim into place.



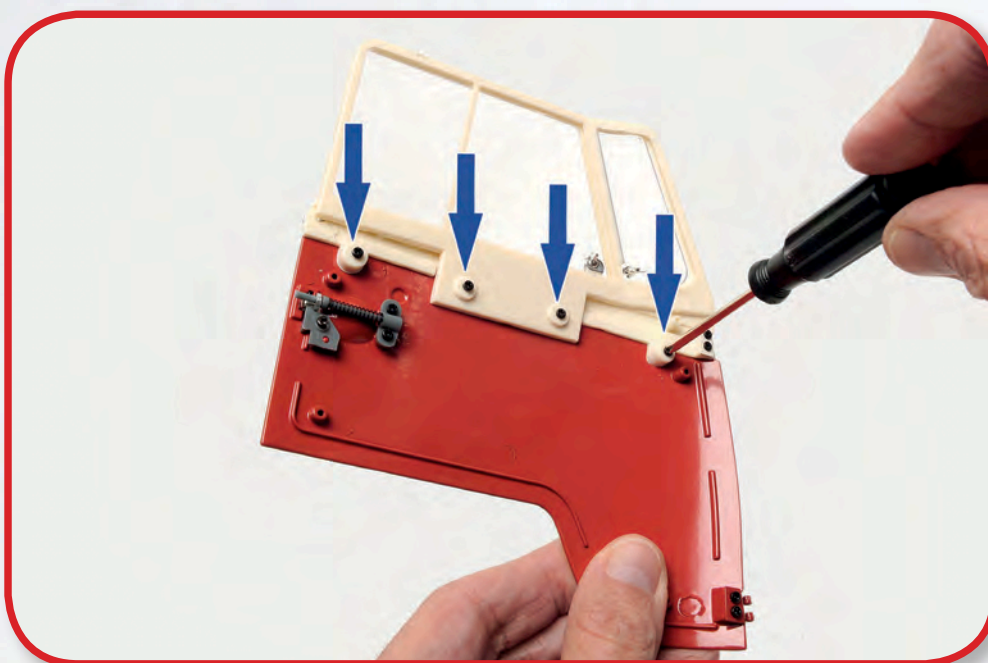
STEP **5-E**

Retrieve the front left door (Stage 4), and place the holes at the bottom of the window frame onto the posts at the top of the door (arrowed).



STEP **5-F**

Secure the window frame to the door with four BD03 screws (5-4).





STEP 5-G

The windows of the model are fully functional: the side window can slide forwards and backwards and the quarter light pivots, as on the actual vehicle.



STAGE COMPLETE

WHERE THE PARTS FIT

